

# AIRPORT MASTER PLAN

# COOLIDGE MUNICIPAL AIRPORT

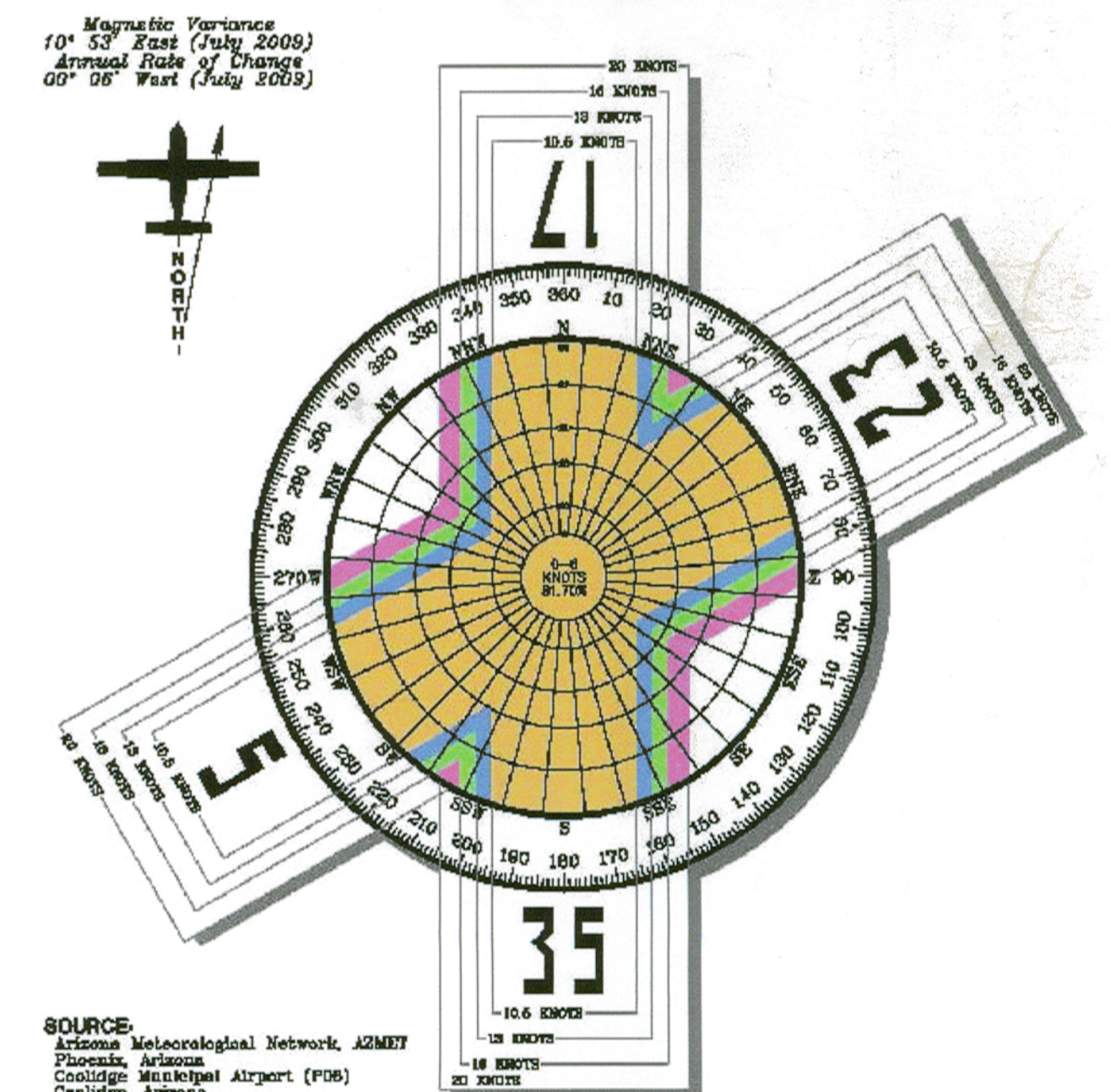
## AIRPORT LAYOUT PLAN SET

### INDEX OF DRAWINGS

1. AIRPORT LAYOUT PLAN
2. TERMINAL AREA DRAWING
3. AIRPORT AIRSPACE DRAWING
4. INNER PORTION OF THE RUNWAY 5-23 APPROACH SURFACE DRAWING
5. INNER PORTION OF THE RUNWAY 17-35 APPROACH SURFACE DRAWING
6. RUNWAY 5-23 PROFILE & OUTER APPROACH SURFACE PROFILE DRAWING
7. RUNWAY 17-35 PROFILE & OUTER APPROACH SURFACE PROFILE DRAWING
8. DEPARTURE SURFACE DRAWING FOR RUNWAY 5-23
9. DEPARTURE SURFACE DRAWING FOR RUNWAY 17-35
10. ON-AIRPORT LAND USE PLAN
11. "EXHIBIT A" PROPERTY MAP



ALL WEATHER WIND COVERAGE				
Runways	10-6 Knots	13 Knots	16 Knots	20 Knots
Runway 5-23	98.66%	99.92%	99.86%	99.97%
Runway 17-35	96.95%	97.95%	99.45%	99.87%
Combined	98.52%	99.88%	99.98%	100.00%



Magnetic Variance  
10° 53' East (July 2009)  
Annual Rate of Change  
02° 05' West (July 2009)

SOURCE:  
Arizona Meteorological Network, AZMET  
Phoenix, Arizona  
Coolidge Municipal Airport (F06)  
Coolidge, Arizona

OBSERVATIONS:  
195,253 All Recorder Observations  
01/1987-06/2009

PREPARED FOR  
CITY OF COOLIDGE, ARIZONA

RUNWAY DATA	RUNWAY 5-23		RUNWAY 17-35	
	EXISTING	ULTIMATE	EXISTING	ULTIMATE
RUNWAY CATEGORY/AIRCRAFT DESIGN GROUP	C-IV	C-IV	B-II	B-II
CRITICAL DESIGN AIRCRAFT	C-130	SAME	KING AIR 200	SAME
UNDERCARRIAGE WIDTH (FEET)	14.3'	SAME	17.2'	SAME
WINGSPIAN OF DESIGN AIRCRAFT	139'	SAME	50.25'	SAME
APPROACH SPEED OF DESIGN AIRCRAFT (KNOTS)	155.000	SAME	10.100	SAME
MAXIMUM TAKE OFF WEIGHT (lb.)	60,066	SAME	180,000	SAME
RUNWAY BEARING (TRUE)	5562.72°/151.0'	8100.00°/150.0'	3871.7°/X75'	4271.7°/X75'
RUNWAY DIMENSIONS	1548.0' / 1574.0'	1549.0' / 1580.0'	1573.0' / 1573.0'	1564.8' / 1573.0'
ELEVATION OF RWY TOUCH DOWN ZONE (MSL)	1574.0'	1580'	1573.0'	SAME
ELEVATION OF RUNWAY HIGH POINT (above MSL)	1548.0'	1549'	1563.0'	SAME
ELEVATION OF RUNWAY LOW POINT (above MSL)	1548.0'	1549'	1563.0'	SAME
WIND COVERAGE IN MPH/KNOTS	12.1/10.5-99.50%	15/13-99.88%	18/16-99.98%	23/20-100.00%
APPROACH VISIBILITY MINIMUMS	ONE MILE/ONE MILE	3/4 MILE	VISUAL/VISUAL	ONE MILE/ONE MILE
14 CFR PART 77 CATEGORY	NON PREC/NON PREC	SAME/SAME	UTILITY/UTILITY	NON PREC/NON PREC
RUNWAY APPROACH SURFACES	34:1/24:1	SAME/SAME	20:1/20:1	SAME
RUNWAY THRESHOLD DISPLACEMENT	NONE	NONE	NONE	NONE
RUNWAY SAFETY AREA WIDTH (RSA)	500'	SAME	150'	SAME
RSA DISTANCE BEYOND EACH RUNWAY END	1,000' / 1,000'	SAME	300'	SAME
RUNWAY OBJECT FREE AREA WIDTH (OFA)	800' / 800'	SAME	500'	SAME
OFA DISTANCE BEYOND EACH RUNWAY END	1,000' / 1,000'	SAME	300'	SAME
RUNWAY OBSTACLE FREE ZONE WIDTH (OFZ)	400'	SAME	400'	SAME
OFZ DISTANCE BEYOND EACH RUNWAY END	200'	SAME	200'	SAME
LINE OF SITE REQUIREMENT MET	YES	SAME	YES	SAME
RUNWAY PAVEMENT MATERIAL	ASPHALT	SAME	ASPHALT	SAME
RUNWAY PAVEMENT SURFACE TREATMENT	NONE	SAME	NONE	SAME
PAVEMENT STRENGTH (in thousand lb.)	80(S)/115(D)/210(DT)	SAME	17(S)	30(S)
RUNWAY EFFECTIVE GRADIENT (in %)	0.5%	SAME	0.3%	SAME
MAXIMUM GRADIENT (in %)	1.5%	SAME	2%	SAME
RUNWAY LIGHTING	MIRL	SAME	NONE	MIRL
RUNWAY MARKINGS	NON PREC	SAME	BASIC	NON PREC
RUNWAY APPROACH LIGHTING	NONE	MALS/MALS	NONE	SAME
RUNWAY CENTERLINE TO AIRCRAFT PARKING	500'	SAME	250'	SAME
RUNWAY/TAXIWAY SEPARATION	400'	SAME	240'	SAME
TAXIWAY PAVEMENT MATERIAL	ASPHALT	SAME	ASPHALT	SAME
TAXIWAY LIGHTING	MITL (LIMITED)	MITL (ALL ACTIVE)	MITL	MITL
TAXIWAY MARKINGS	CENTERLINE	SAME	CENTERLINE	SAME
TAXIWAY OBJECT FREE AREA	250'	SAME	131'	SAME
TAXIWAY SAFETY AREA WIDTH	171'	SAME	79'	SAME
TAXIWAY CL TO FIXED OR MOVEABLE OBJECT	129.5'	SAME	65.5'	SAME
DISTANCE FROM RWY CL TO HOLD BARS	250'	SAME	125'	200'
WING TIP CLEARANCE	44'	SAME	26'	SAME
VISUAL AIDS	PAPI-2	PAPI-4	MALS	PAPI-2
NAVIGATIONAL AIDS	VOR/DME	SAME	SAME	GPS

DEVIATIONS FROM FAA AIRPORT DESIGN STANDARDS				
DEVIATION DESCRIPTION	EFFECTED DESIGN STANDARD	STANDARD	EXISTING	PROPOSED DISPOSITION
OBSTRUCTION IN "OFA"	OFA	1,000' BEYOND RUNWAY END	900' BEYOND RUNWAY END	SHIFT RUNWAY 5-23 100' TO THE NORTHEAST

AIRPORT DATA	
COOLIDGE MUNICIPAL AIRPORT (POB)	
CITY: COLLIDGE, ARIZONA	COUNTY: PINAL
RANGE: 09 E	TOWNSHIP: 6S
CIVIL TOWNSHIP: NA	
	EXISTING
AIRPORT SERVICE LEVEL	GENERAL AVIATION
AIRPORT REFERENCE CODE	C-IV
AIRPORT ELEVATION	1575.0' MSL
MEAN MAXIMUM TEMPERATURE OF HOTTEST MONTH	105° F (July)
AIRPORT REFERENCE POINT (ARP) COORDINATES (NAD 83)	Latitude 32°56'06.2300" N Longitude 111°25'32.4300" W
AIRPORT and TERMINAL NAVIGATIONAL AIDS	GPS VOR/DME PAPI-2 ROTATING BEACON SEGMENTED CIRCLE/WIND CONE

RUNWAY END COORDINATES (NAD 83)		
RUNWAY	EXISTING	ULTIMATE
Runway 5	Latitude 32°56'01.125" N Longitude 111°26'07.48" W	32°56'01.616" N 111°26'06.461" W
Runway 23	Latitude 32°56'28.447" N Longitude 111°25'10.816" W	32°56'48.552" N 111°24'44.053" W
Runway 17	Latitude 32°56'21.509" N Longitude 111°25'29.697" W	32°56'25.466" N 111°25'29.679" W
Runway 35	Latitude 32°55'43.199" N Longitude 111°25'29.869" W	SAME

- GENERAL NOTES:**
- Depiction of features and objects, including related elevations within the runway protection zones are depicted on the INNER APPROACH SURFACE DRAWING.
  - Details concerning terminal improvements are depicted on the TERMINAL AREA PLANS.
  - Recommended land uses within the airport environs are depicted on the AIRPORT LAND USE PLAN.
  - Detail concerning airport property are depicted on the AIRPORT PROPERTY MAP.
  - Building Restriction Line (BRL) is established in accordance with F.A.R. Part 77 criteria. Building Restriction Line location may be reduced in accordance to Part 77 to limits of the Runway Object Free Area, Runway Safety Area, and/or Runway Protection Zone criteria.
  - Ultimate fence line extends around Existing/Ultimate Property Line except where shown.
  - Base Map and Contours derived from August, 2009 aerial photography and planimetric mapping, surveyed by Urban Engineering Inc.
  - Source for existing runway end/displaced threshold coordinates, elevations: Planimetric Mapping surveyed by Urban Engineering Inc.
  - All elevations are in NAVD 88 and all horizontal coordinates are in NAD 83.
  - The airport has not been surveyed in accordance with FAA Standard 405.
  - No threshold siting surface object penetrations.
  - All survey monuments enclosed in concrete casings.

**FAA APPROVAL STAMP**

Approved conditionally December 5, 2013  
 Subject to comments contained in our letter dated: 12-5-2013

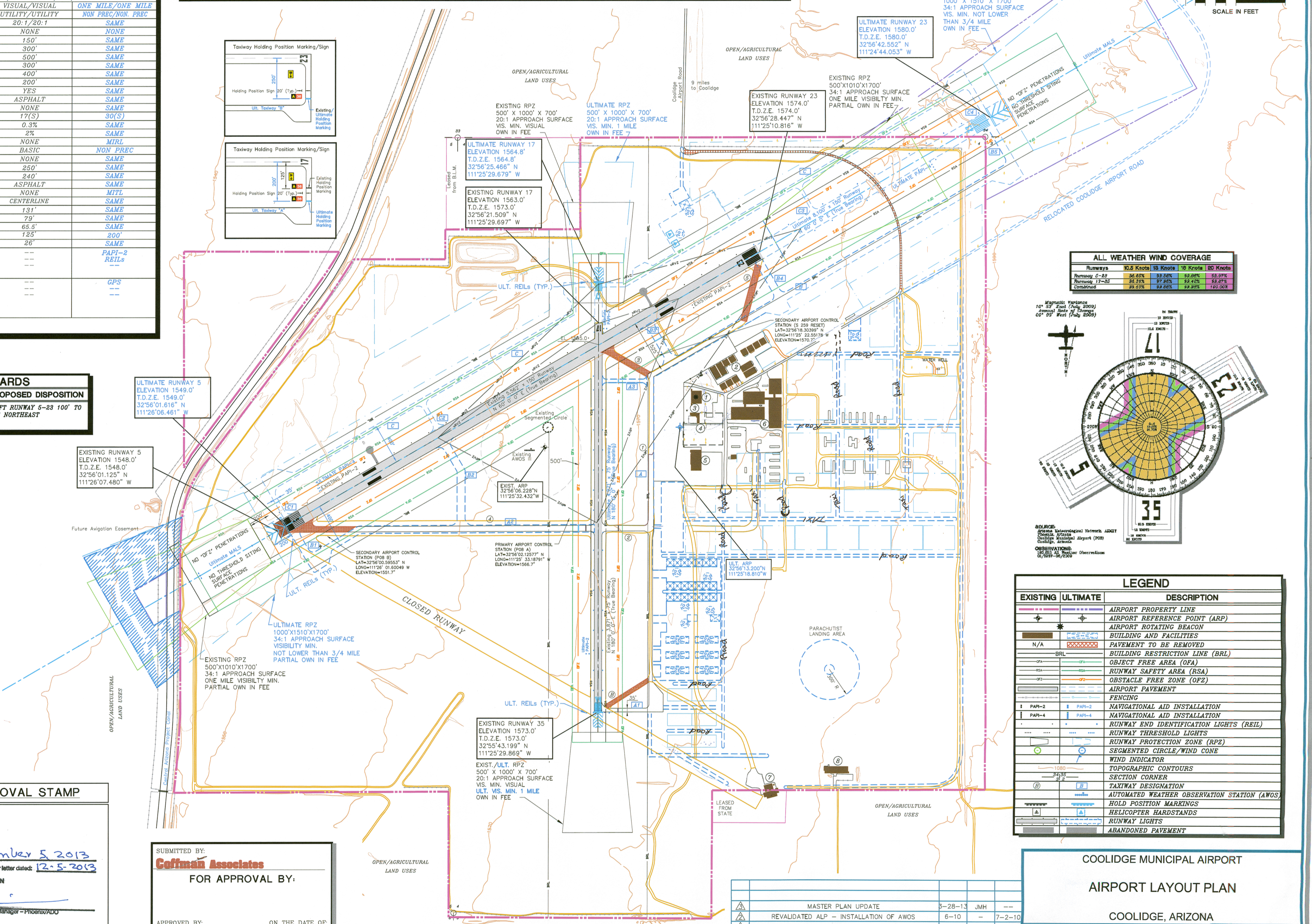
FEDERAL AVIATION ADMINISTRATION  
 Western-Pacific Region  
 By: *[Signature]*  
 Manager/Assistant Manager - Phoenix/DO

SUBMITTED BY:  
**Coffman Associates**

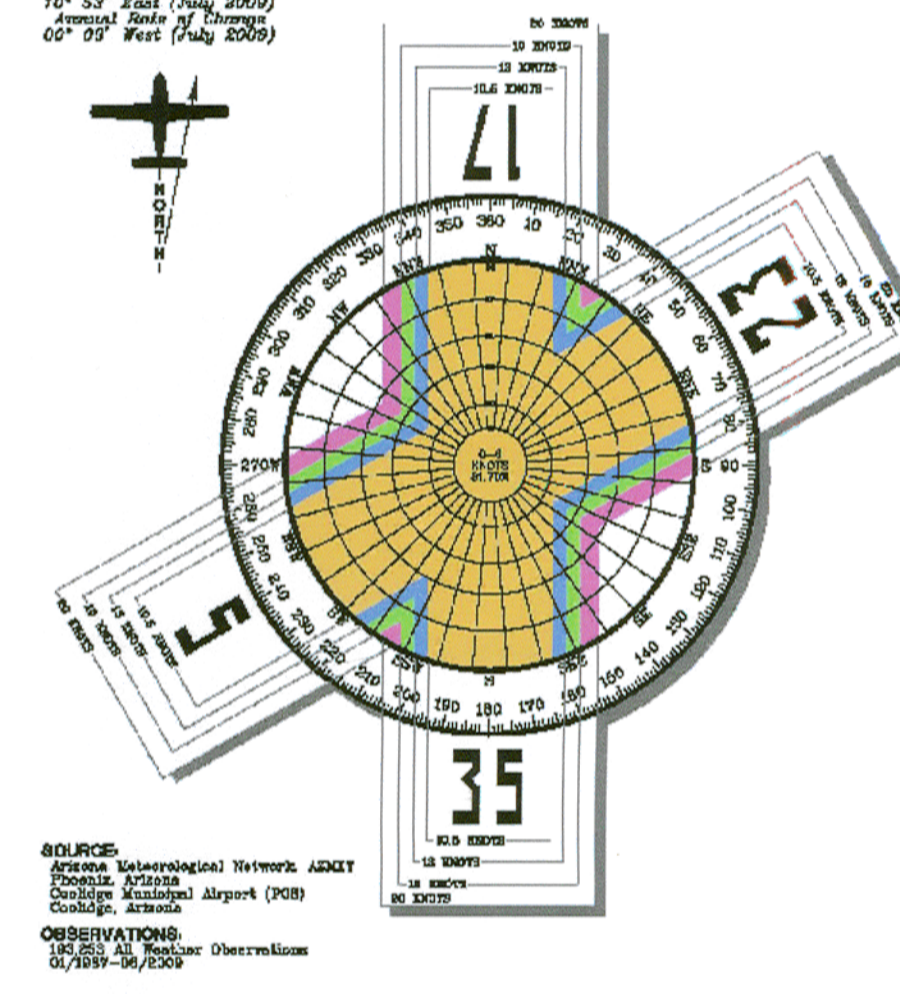
FOR APPROVAL BY:

APPROVED BY: *[Signature]* ON THE DATE OF: 4-12-13  
 CITY MANAGER

BUILDINGS/FACILITIES			BUILDINGS/FACILITIES		
EXISTING	DESCRIPTION	TOP EL.	ULTIMATE	DESCRIPTION	TOP EL.
1	CONVENTIONAL HANGAR (COOLIDGE AVIATION)	1583.6'	20	GENERAL AVIATION TERMINAL AREA	±1590.0'
2	STORAGE HANGARS (COOLIDGE AVIATION)	1589.1'	21	HELICOPTER HARD STANDS	NA
3	FUEL FARM	1574.4'	22	JOINT USE FIRE/RESCUE FACILITY	±1599.0'
4	OFFICES (COOLIDGE AVIATION)	1582.2'	23	BOX HANGARS	±1590.0'
5	INTERNATIONAL AIR RESPONSE	1587.0'	24	WASH RACK	NA
6	NON AVIATION DEVELOPMENT	1596.5'	25	MAINTENANCE BUILDING	±1589.0'
7	COMPLETE PARACHUTE SOLUTIONS	1597.9'	26	HANGARS	±1595.0'
8	COMPLETE PARACHUTE SOLUTIONS	1593.0'	27	---	---
9	---	---	28	---	---



ALL WEATHER WIND COVERAGE				
Runways	15 Knots	10 Knots	5 Knots	0 Knots
Runways C-IV	88.0%	83.0%	82.0%	80.0%
Runways B-II	85.0%	77.0%	82.0%	80.0%
Combined	89.0%	82.0%	82.0%	80.0%



LEGEND		
EXISTING	ULTIMATE	DESCRIPTION
+	+	AIRPORT PROPERTY LINE
*	*	AIRPORT REFERENCE POINT (ARP)
○	○	AIRPORT ROTATING BEACON
■	■	BUILDING AND FACILITIES
N/A	---	PAVEMENT TO BE REMOVED
---	---	BUILDING RESTRICTION LINE (BRL)
---	---	OBJECT FREE AREA (OFA)
---	---	RUNWAY SAFETY AREA (RSA)
---	---	OBSTACLE FREE ZONE (OFZ)
---	---	AIRPORT PAVEMENT
---	---	FENCING
---	---	NAVIGATIONAL AID INSTALLATION
---	---	NAVIGATIONAL AID INSTALLATION
---	---	RUNWAY END IDENTIFICATION LIGHTS (REIL)
---	---	RUNWAY THRESHOLD LIGHTS
---	---	RUNWAY PROTECTION ZONE (RPZ)
---	---	SEGMENTED CIRCLE/WIND CONE
---	---	WIND INDICATOR
---	---	TOPOGRAPHIC CONTOURS
---	---	SECTION CORNER
---	---	TAXIWAY DESIGNATION
---	---	AUTOMATED WEATHER OBSERVATION STATION (AWOS)
---	---	HOLD POSITION MARKINGS
---	---	HELICOPTER HARDSTANDS
---	---	RUNWAY LIGHTS
---	---	ABANDONED PAVEMENT

No.	REVISIONS	DATE	BY	APP'D.
1	MASTER PLAN UPDATE	5-28-13	JMH	---
2	REVALUED ALP - INSTALLATION OF AWOS	6-10	---	7-2-10
3	FAA APPROVED MASTER PLAN	1-27-08	JMH	1998

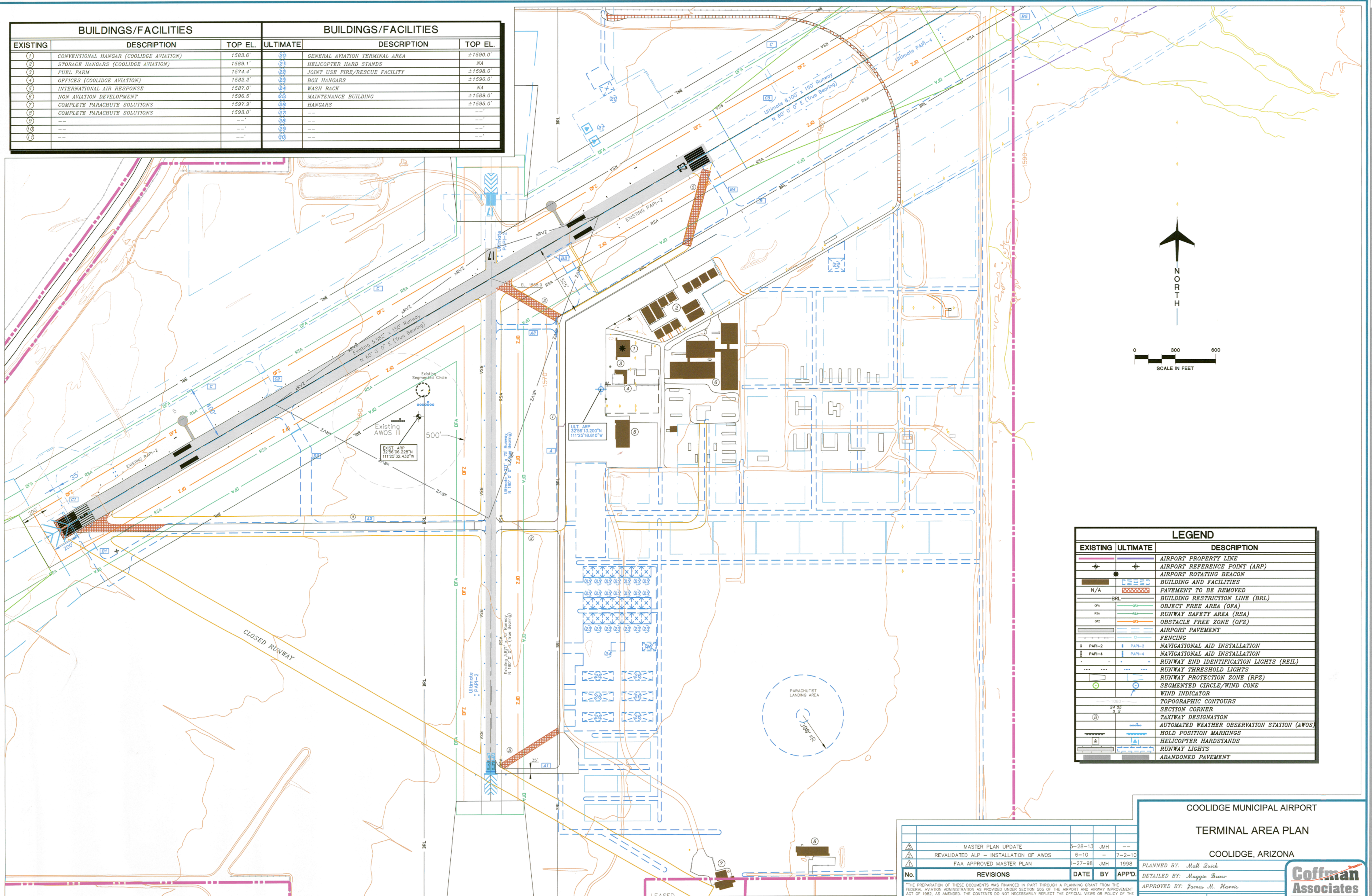
COOLIDGE MUNICIPAL AIRPORT  
 AIRPORT LAYOUT PLAN  
 COOLIDGE, ARIZONA

PLANNED BY: *[Signature]*  
 DETAILED BY: *[Signature]*  
 APPROVED BY: *[Signature]*  
 March 28, 2013 SHEET 1 OF 11

**Coffman Associates**  
 Airport Consultants  
 www.coffmanassociates.com

Coffman Associates, 11500 N. 19th Ave., Suite 100, Phoenix, AZ 85022, (602) 998-1100, www.coffmanassociates.com

BUILDINGS/FACILITIES			BUILDINGS/FACILITIES		
EXISTING	DESCRIPTION	TOP EL.	ULTIMATE	DESCRIPTION	TOP EL.
1	CONVENTIONAL HANGAR (COOLIDGE AVIATION)	1583.6'	20	GENERAL AVIATION TERMINAL AREA	±1590.0'
2	STORAGE HANGARS (COOLIDGE AVIATION)	1589.1'	21	HELICOPTER HARD STANDS	NA
3	FUEL FARM	1574.4'	22	JOINT USE FIRE/RESCUE FACILITY	±1598.0'
4	OFFICES (COOLIDGE AVIATION)	1582.2'	23	BOX HANGARS	±1590.0'
5	INTERNATIONAL AIR RESPONSE	1587.0'	24	WASH RACK	NA
6	NON AVIATION DEVELOPMENT	1596.5'	25	MAINTENANCE BUILDING	±1589.0'
7	COMPLETE PARACHUTE SOLUTIONS	1597.9'	26	HANGARS	±1595.0'
8	COMPLETE PARACHUTE SOLUTIONS	1593.0'	27	---	---
9	---	---	28	---	---
10	---	---	29	---	---
11	---	---	30	---	---



LEGEND		
EXISTING	ULTIMATE	DESCRIPTION
—	—	AIRPORT PROPERTY LINE
+	+	AIRPORT REFERENCE POINT (ARP)
*	*	AIRPORT ROTATING BEACON
■	■	BUILDING AND FACILITIES
N/A	■	PAVEMENT TO BE REMOVED
—	—	BUILDING RESTRICTION LINE (BRL)
OFA	OFA	OBJECT FREE AREA (OFA)
RSA	RSA	RUNWAY SAFETY AREA (RSA)
OFZ	OFZ	OBSTACLE FREE ZONE (OFZ)
—	—	AIRPORT PAVEMENT
—	—	FENCING
PAPI-2	PAPI-2	NAVIGATIONAL AID INSTALLATION
PAPI-4	PAPI-4	NAVIGATIONAL AID INSTALLATION
REIL	REIL	RUNWAY END IDENTIFICATION LIGHTS (REIL)
TL	TL	RUNWAY THRESHOLD LIGHTS
RPZ	RPZ	RUNWAY PROTECTION ZONE (RPZ)
SC	SC	SEGMENTED CIRCLE/WIND CONE
WI	WI	WIND INDICATOR
TC	TC	TOPOGRAPHIC CONTOURS
SC	SC	SECTION CORNER
TD	TD	TAXIWAY DESIGNATION
AWOS	AWOS	AUTOMATED WEATHER OBSERVATION STATION (AWOS)
HP	HP	HOLD POSITION MARKINGS
HS	HS	HELICOPTER HARDSTANDS
RL	RL	RUNWAY LIGHTS
AP	AP	ABANDONED PAVEMENT

No.	REVISIONS	DATE	BY	APP'D.
1	MASTER PLAN UPDATE	3-28-13	JMH	---
2	REVALIDATED ALP - INSTALLATION OF AWOS	6-10	---	7-2-10
3	FAA APPROVED MASTER PLAN	7-27-98	JMH	1998

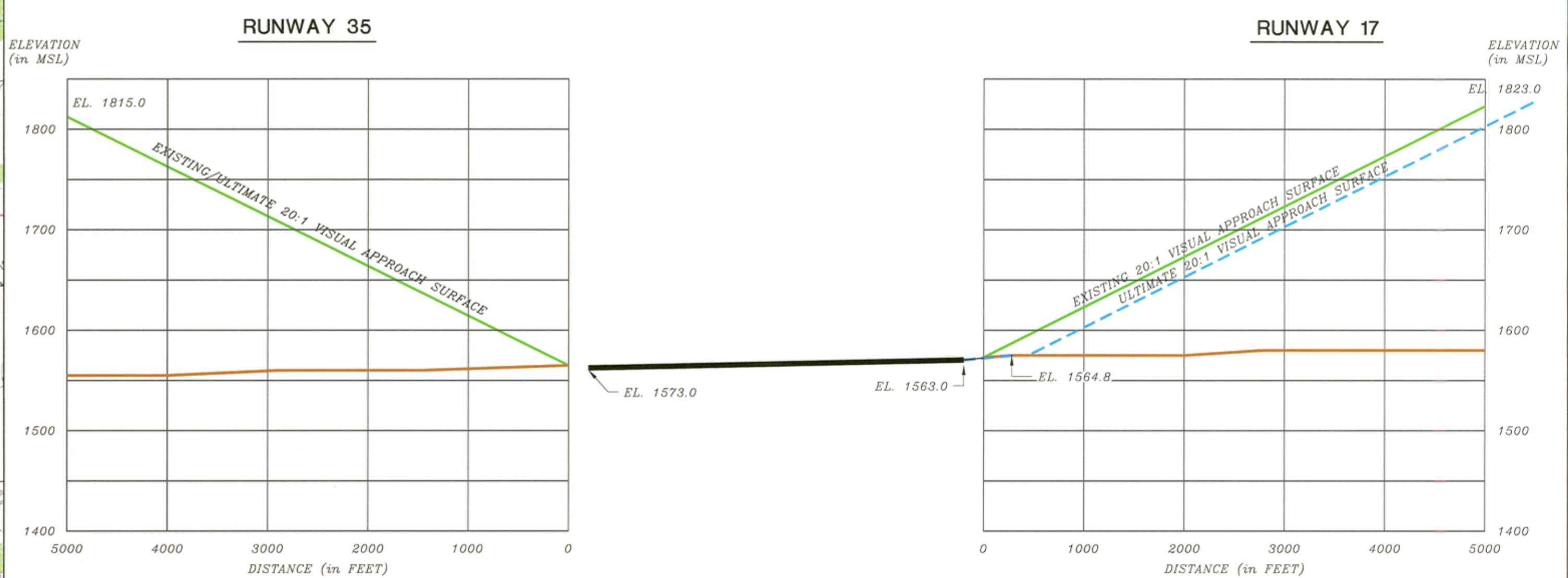
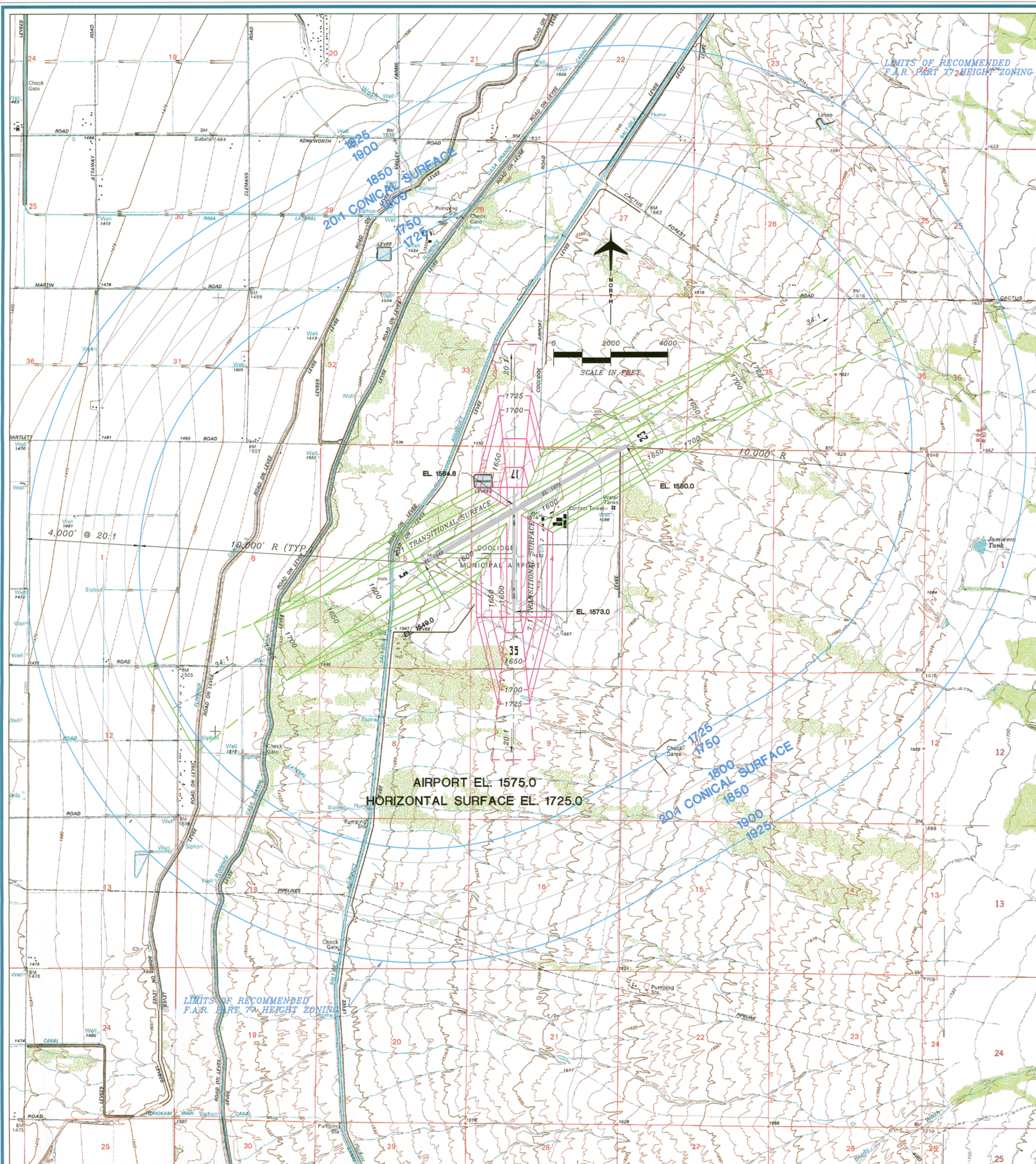
**COOLIDGE MUNICIPAL AIRPORT**  
**TERMINAL AREA PLAN**  
COOLIDGE, ARIZONA

PLANNED BY: *Matt Suick*  
DETAILED BY: *Maggie Beaser*  
APPROVED BY: *James M. Harris*

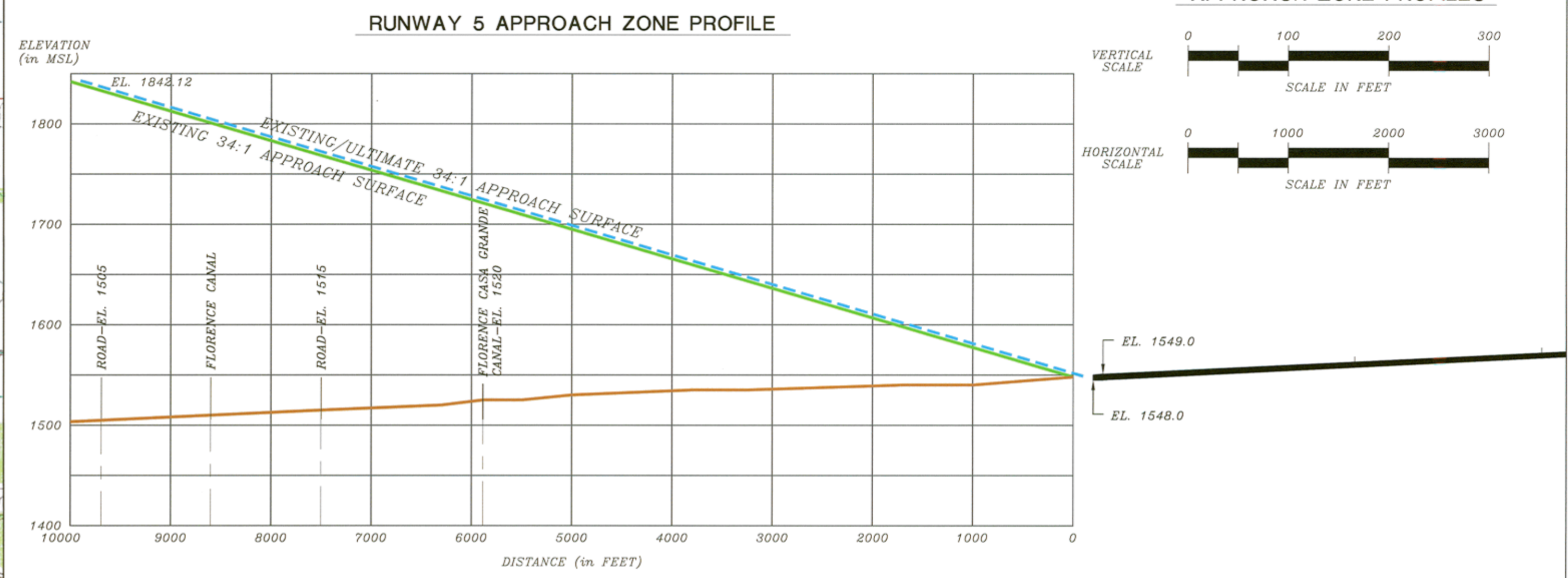
March 28, 2013 SHEET 2 OF 11



THE PREPARATION OF THESE DOCUMENTS WAS FINANCED IN PART THROUGH A PLANNING GRANT FROM THE FEDERAL AVIATION ADMINISTRATION AS PROVIDED UNDER SECTION 505 OF THE AIRPORT AND AIRWAY IMPROVEMENT ACT OF 1982, AS AMENDED. THE CONTENTS DO NOT NECESSARILY REFLECT THE OFFICIAL VIEWS OR POLICY OF THE FAA. ACCEPTANCE OF THESE DOCUMENTS BY THE FAA DOES NOT IN ANY WAY CONSTITUTE A COMMITMENT ON THE PART OF THE UNITED STATES TO PARTICIPATE IN ANY DEVELOPMENT DEPICTED HEREIN NOR DOES IT INDICATE THAT THE PROPOSED DEVELOPMENT IS ENVIRONMENTALLY ACCEPTABLE IN ACCORDANCE WITH APPROPRIATE PUBLIC LAWS.

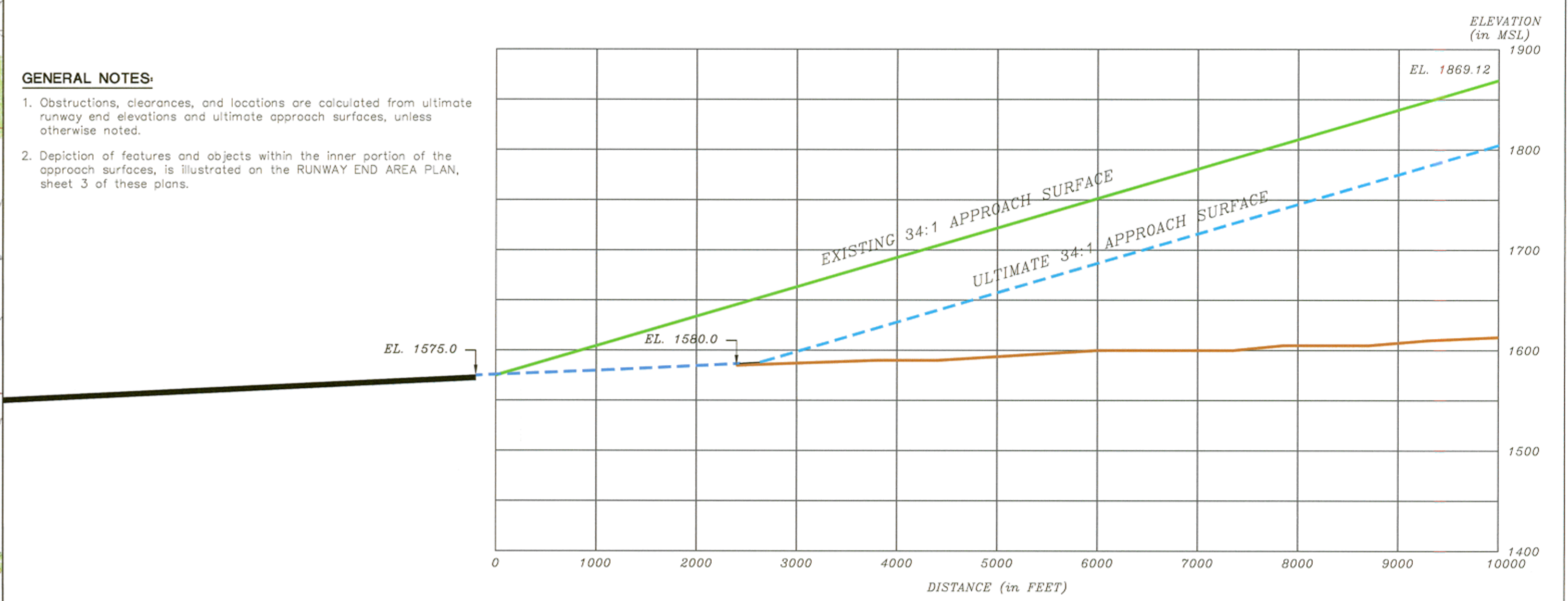


RUNWAY 17-35 APPROACH ZONES PROFILES



RUNWAY 5 APPROACH ZONE PROFILE

APPROACH ZONE PROFILES



RUNWAY 23 APPROACH ZONE PROFILE

- GENERAL NOTES:**
- Obstructions, clearances, and locations are calculated from ultimate runway end elevations and ultimate approach surfaces, unless otherwise noted.
  - Depiction of features and objects within the inner portion of the approach surfaces, is illustrated on the RUNWAY END AREA PLAN, sheet 3 of these plans.

Object Description	Object Elevation	Obstructed Part 77 Surface	Surface Elevation	Object Penetration	Proposed Object Disposition
NONE FOUND					

OBSTRUCTION LEGEND	
•	OBSTRUCTION
▨	GROUP or MULTIPLE OBSTRUCTIONS

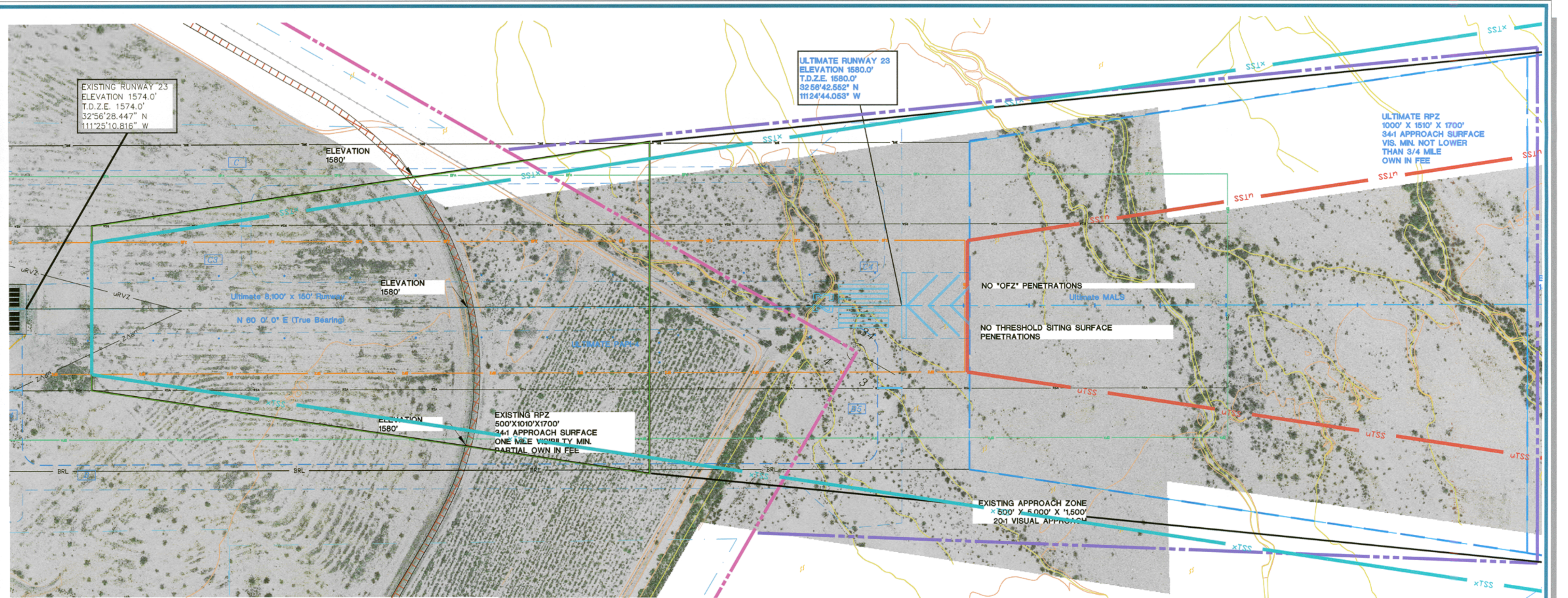
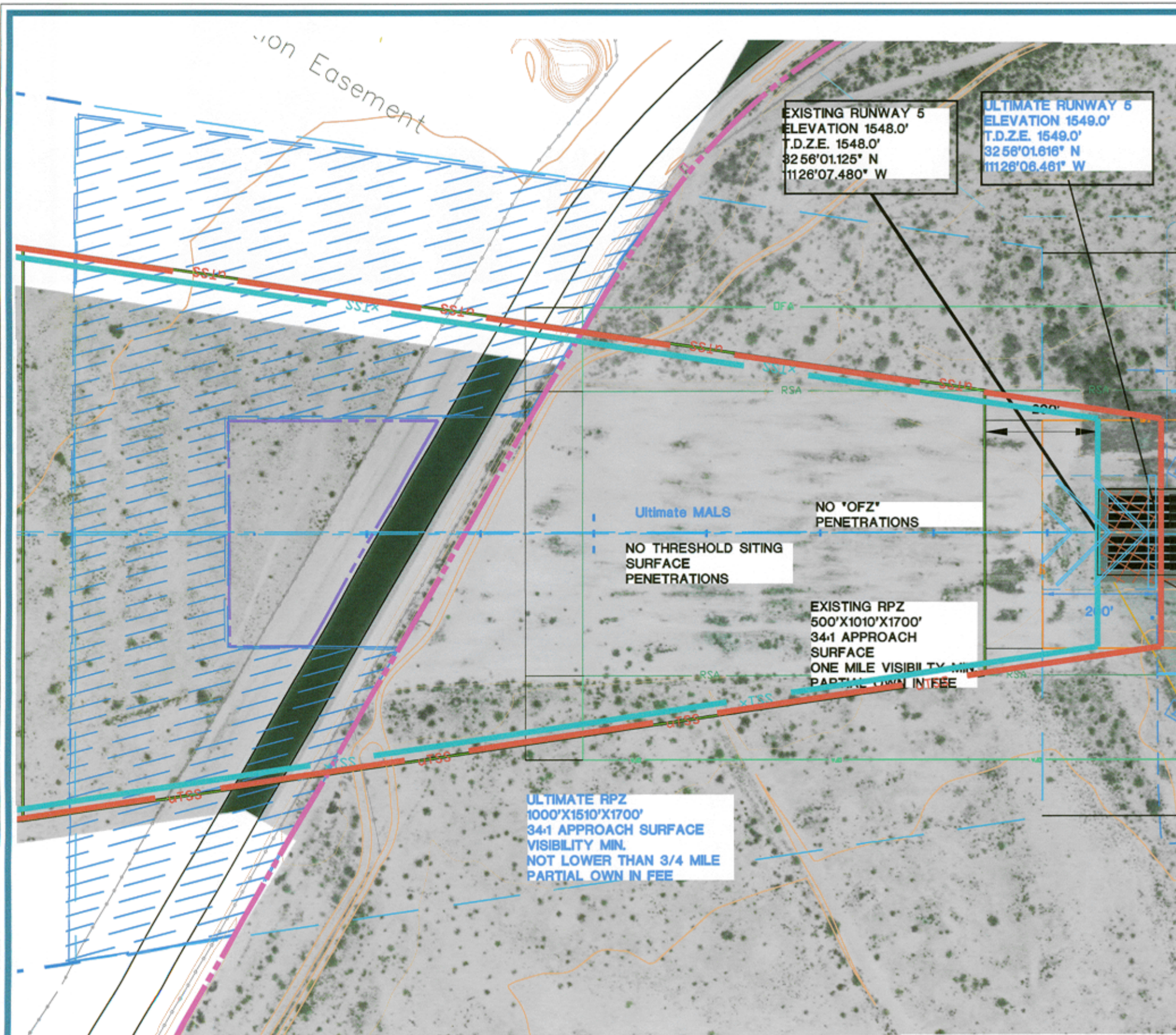
No.	REVISIONS	DATE	BY	APP'D.
1	MASTER PLAN UPDATE	5-28-13	JMH	--
2	REVALIDATED ALP - INSTALLATION OF AWOS	6-10	--	7-2-10
3	FAA APPROVED MASTER PLAN	7-27-98	JMH	1998

**COOLIDGE MUNICIPAL AIRPORT**  
**AIRPORT AIRSPACE DRAWING**  
 COOLIDGE, ARIZONA

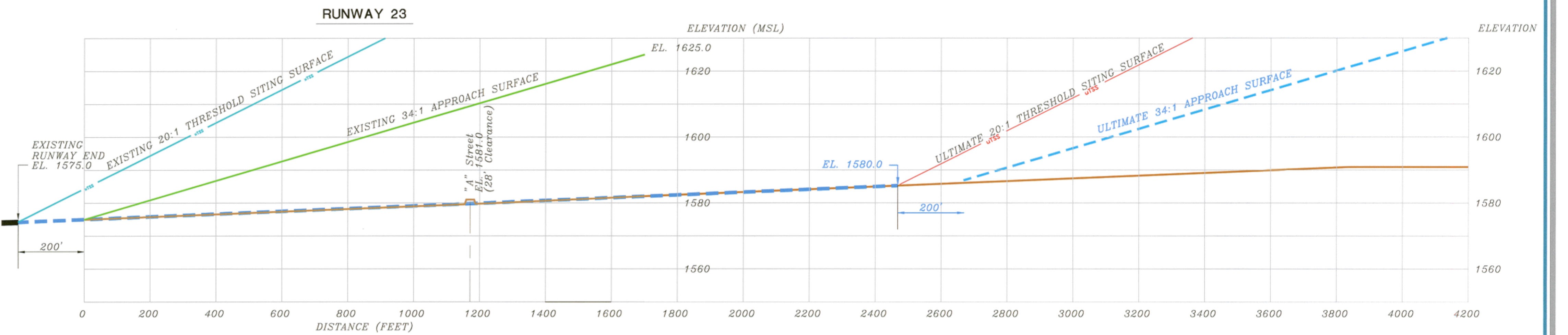
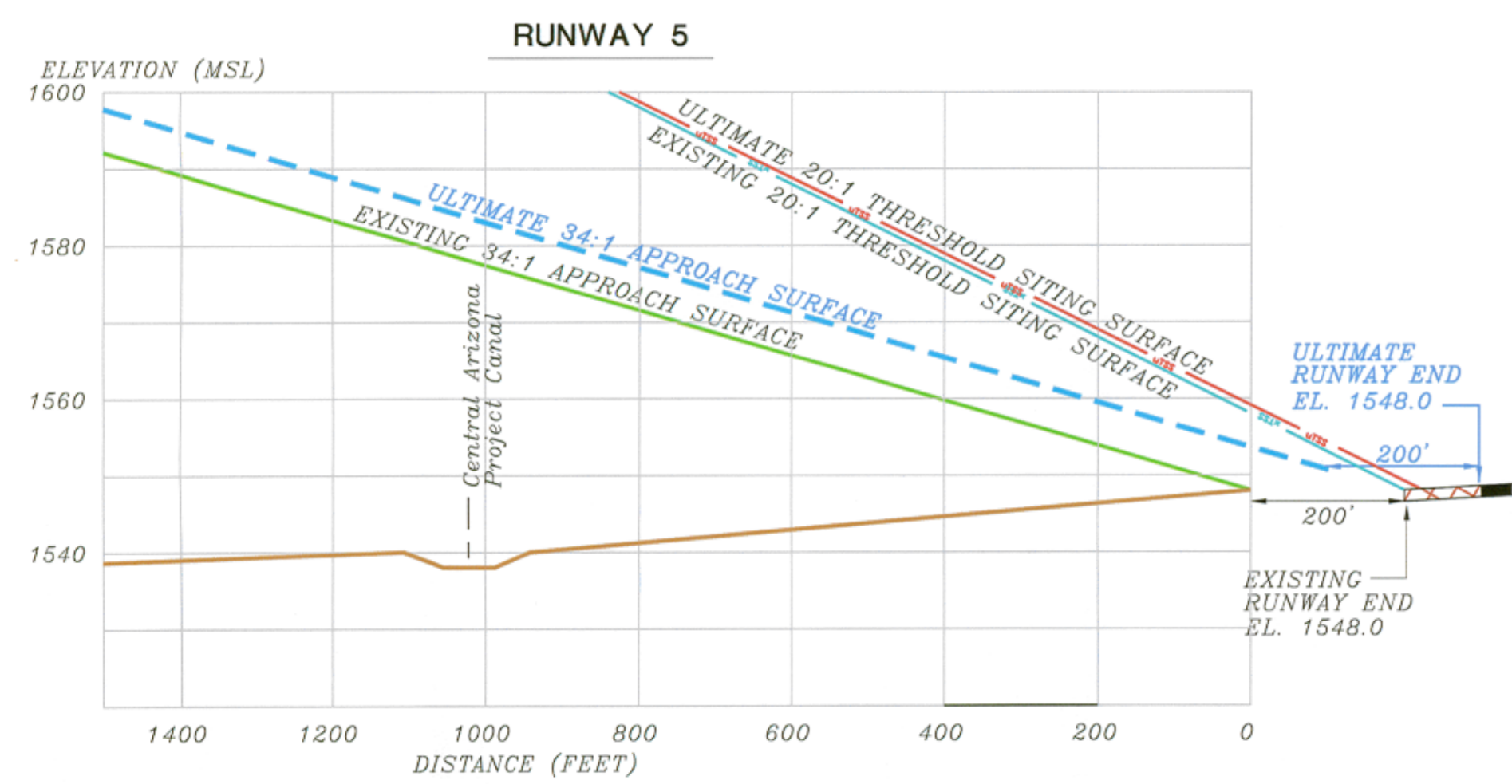
PLANNED BY: *Matt Suick*  
 DETAILED BY: *Maggie Beier*  
 APPROVED BY: *James M. Harris*

March 28, 2013 SHEET 3 OF 11

Coffman Associates 12-28-2010 Coolidge Municipal Airport 2013-10-13 10:00:00 AM 10:00:00 AM

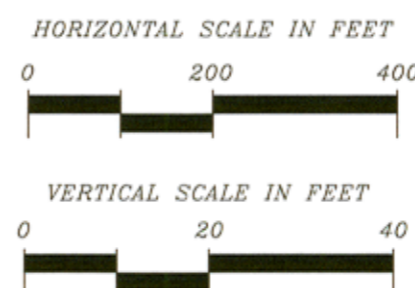


RUNWAY 5-23 INNER APPROACH SURFACE PLANS and PROFILES



OBSTRUCTION TABLE					
Object Description	Object Elevation	Obstructed Part 77 Surface	Surface Elevation	Object Penetration	Proposed Object Disposition
NONE FOUND	-	-	-	-	-

- GENERAL NOTES:**
- Obstructions, clearances, and locations are calculated from existing runway end elevations and existing approach surfaces, unless otherwise noted.
  - Depiction of features and objects within the primary, transitional, and horizontal Part 77 surfaces, is illustrated on the PART 77 AIRSPACE DRAWING.
  - Depiction of features and objects within the outer portion of the approach surfaces, are illustrated on the OUTER APPROACH SURFACE DRAWINGS.



No.	REVISIONS	DATE	BY	APP'D.
1	MASTER PLAN UPDATE	3-28-13	JMH	
2	REVALIDATED ALP - INSTALLATION OF AWOS	6-10		7-2-10
3	FAA APPROVED MASTER PLAN	7-27-98	JMH	1998

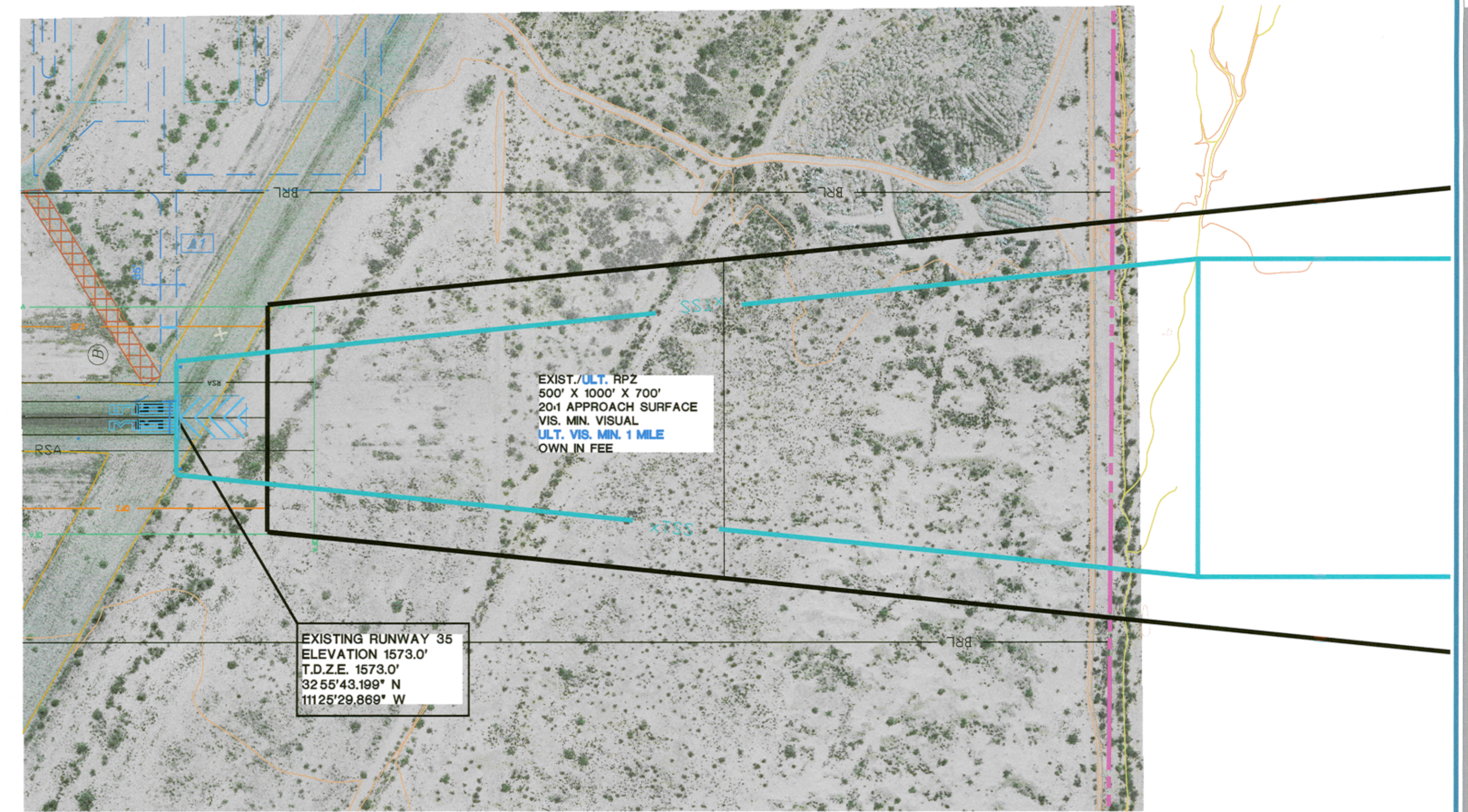
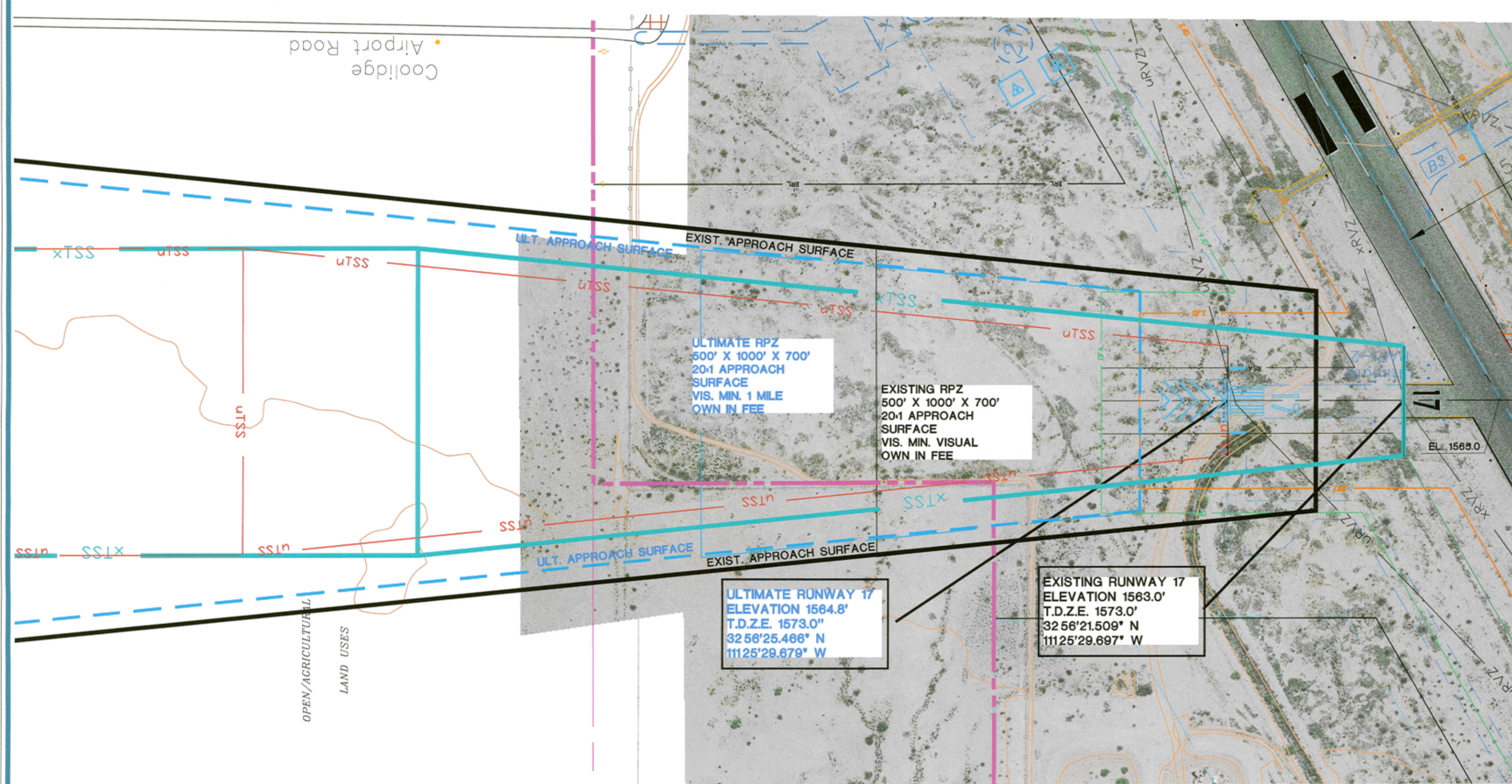
THE PREPARATION OF THESE DOCUMENTS WAS FINANCED IN PART THROUGH A PLANNING GRANT FROM THE FEDERAL AVIATION ADMINISTRATION AS PROVIDED UNDER SECTION 305 OF THE AIRPORT AND AIRWAY IMPROVEMENT ACT OF 1982, AS AMENDED. THE CONTENTS DO NOT NECESSARILY REFLECT THE OFFICIAL VIEWS OR POLICY OF THE FAA. ACCEPTANCE OF THESE DOCUMENTS BY THE FAA DOES NOT IN ANY WAY CONSTITUTE A COMMITMENT OR THE PART OF THE UNITED STATES TO PARTICIPATE IN ANY DEVELOPMENT DEPICTED HEREIN NOR DOES IT INDICATE THAT THE PROPOSED DEVELOPMENT IS ENVIRONMENTALLY ACCEPTABLE IN ACCORDANCE WITH APPROPRIATE PUBLIC LAWS.

COOLIDGE MUNICIPAL AIRPORT  
INNER PORTION OF THE RUNWAY  
5-23 APPROACH SURFACE DRAWING  
COOLIDGE, ARIZONA

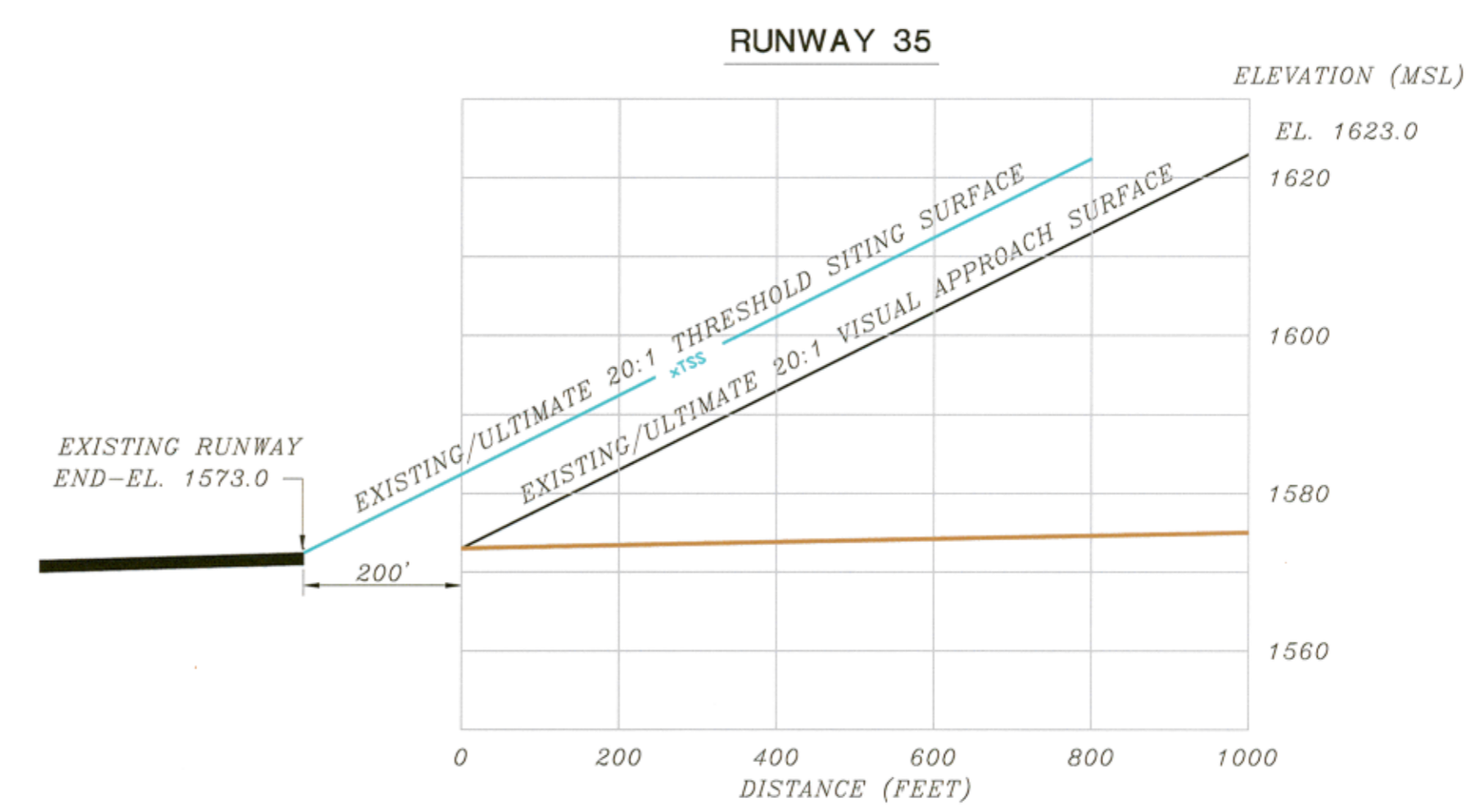
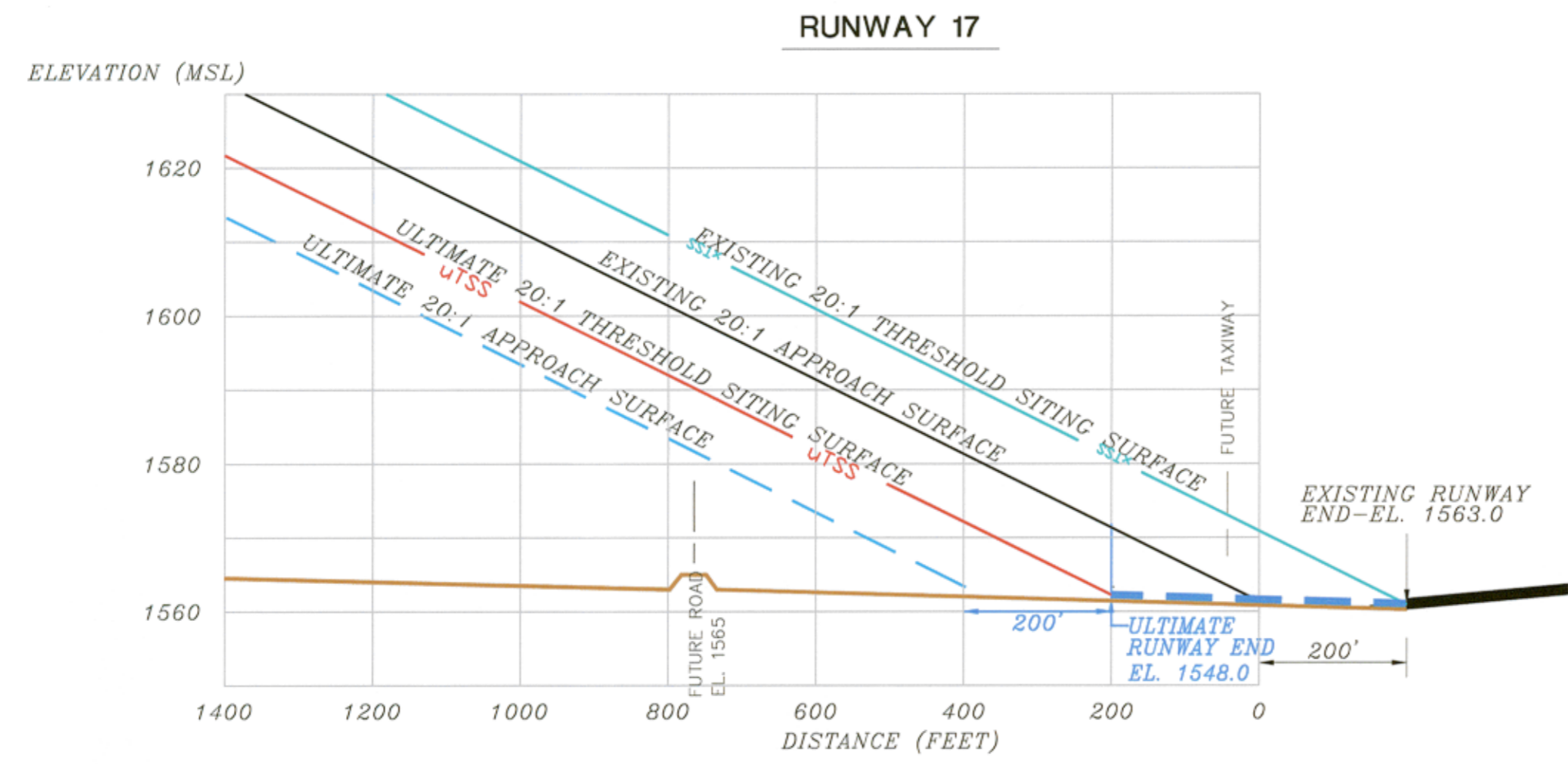
PLANNED BY: Matt Duick  
DETAILED BY: Maggie Beaser  
APPROVED BY: James M. Harris

March 28, 2013 SHEET 4 OF 11



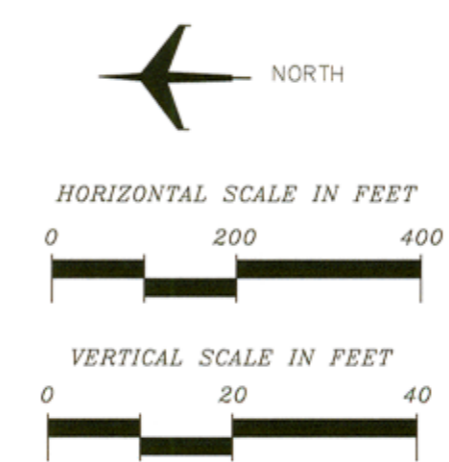


RUNWAY 17-35 INNER APPROACH SURFACE PLANS and PROFILES



Object Description	Object Elevation	Obstructed Part 77 Surface	Surface Elevation	Object Penetration	Proposed Object Disposition
NONE FOUND	-	-	-	-	-

- GENERAL NOTES:**
- Obstructions, clearances, and locations are calculated from existing runway end elevations and existing approach surfaces, unless otherwise noted.
  - Depiction of features and objects within the primary, transitional, and horizontal Part 77 surfaces, is illustrated on the PART 77 AIRSPACE DRAWING.
  - Depiction of features and objects within the outer portion of the approach surfaces, are illustrated on the OUTER APPROACH SURFACE DRAWINGS.



No.	REVISIONS	DATE	BY	APP'D.
1	MASTER PLAN UPDATE	5-28-13	JMH	---
2	REVALIDATED ALP - INSTALLATION OF AWOS	6-10	---	7-2-10
3	FAA APPROVED MASTER PLAN	1-27-98	JMH	1998

COOLIDGE MUNICIPAL AIRPORT  
 INNER PORTION OF THE RUNWAY  
 17-35 APPROACH SURFACE DRAWING  
 COOLIDGE, ARIZONA

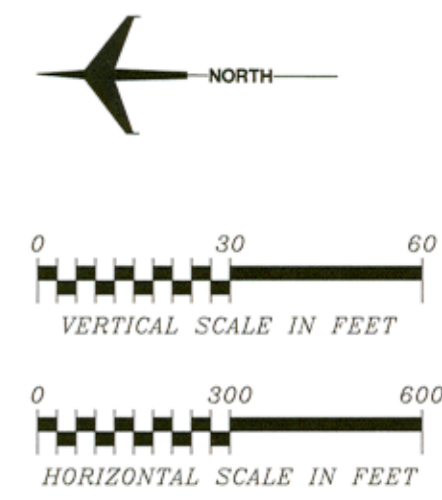
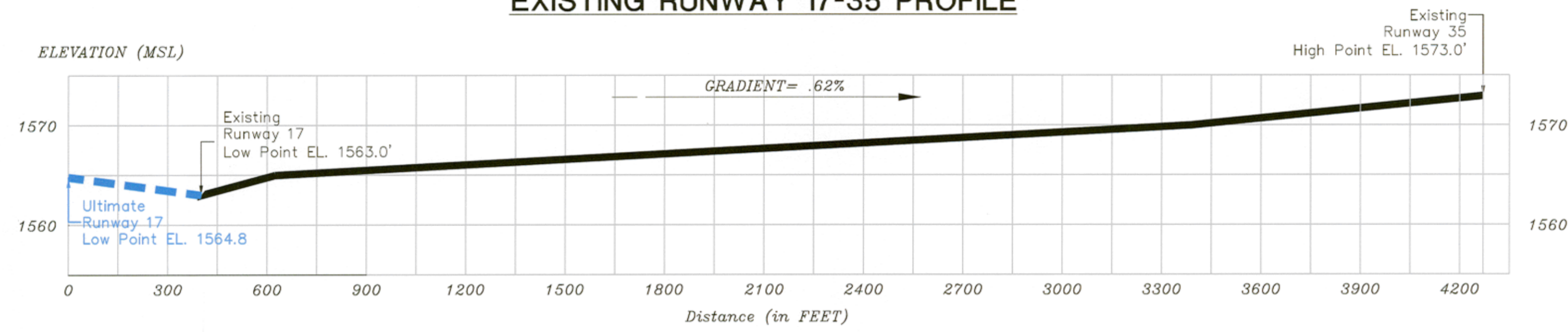
PLANNED BY: Mall Suick  
 DETAILED BY: Maggie Beiser  
 APPROVED BY: James M. Harris

March 28, 2013 SHEET 5 OF 11

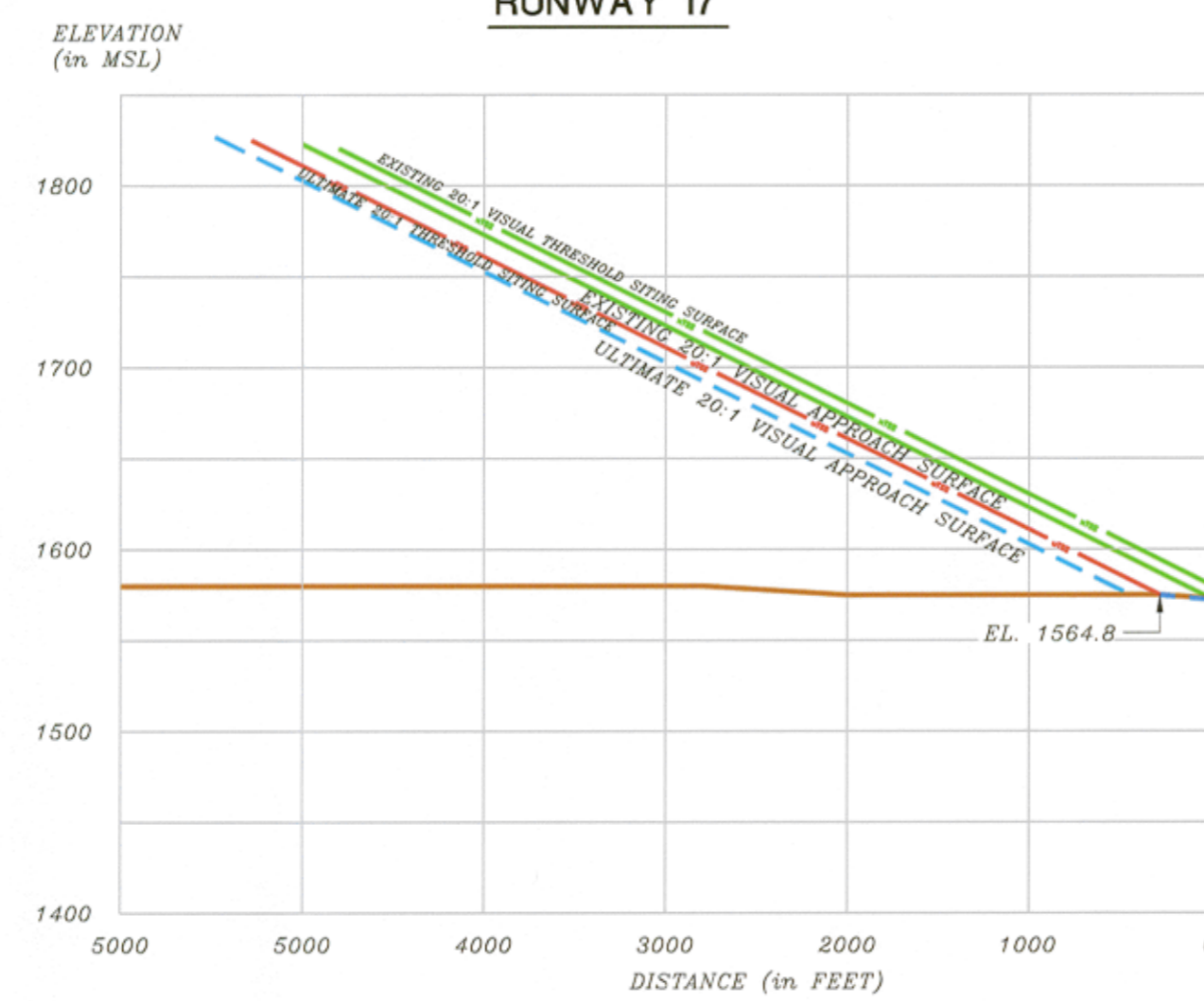
Coffman Associates, Inc. 12 28 2013 10:45:13 AM 17-35 03 28 2013.dwg Printed Date: 4-02-13 03:20:03 PM Margaret Beaver



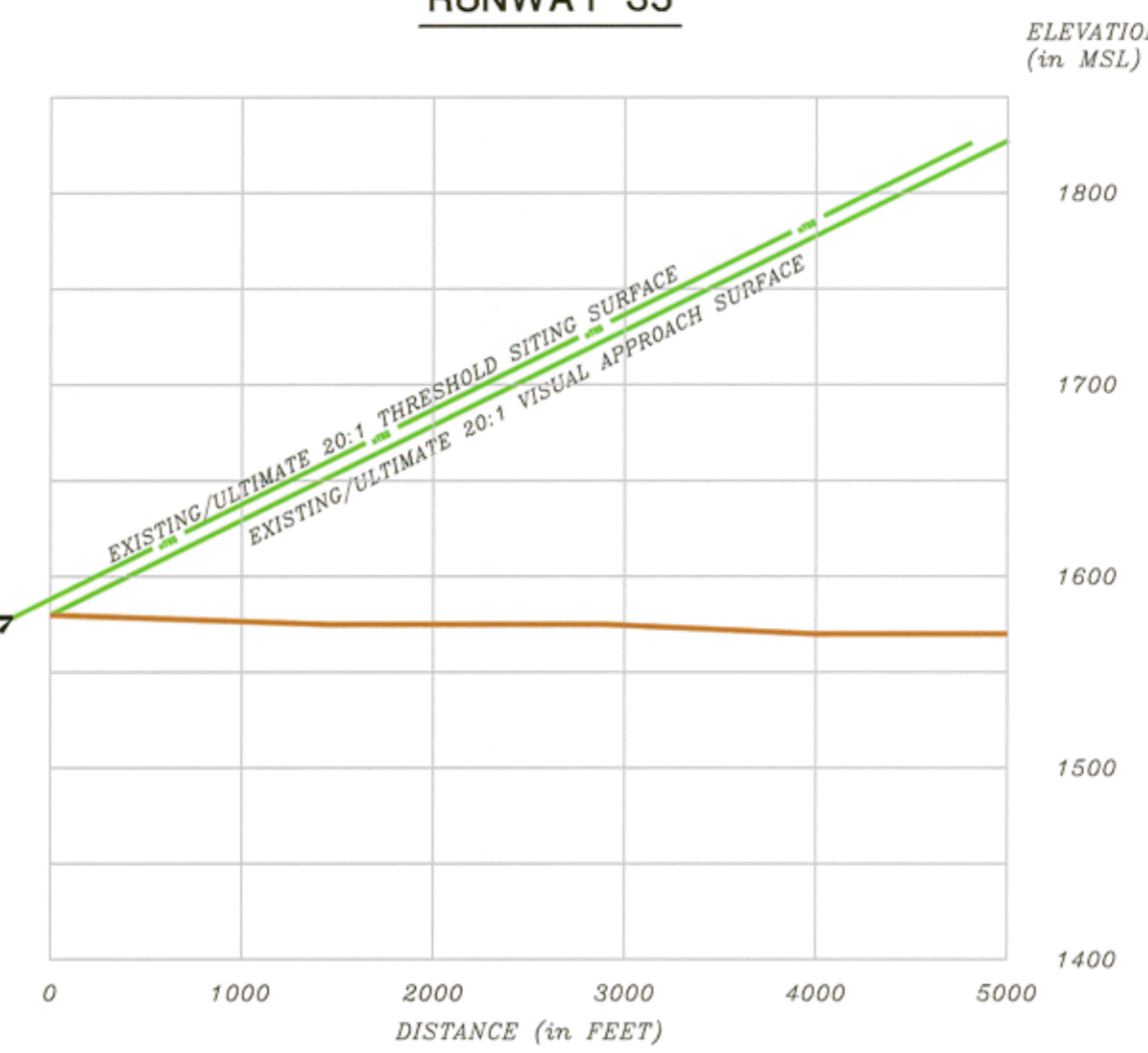
EXISTING RUNWAY 17-35 PROFILE



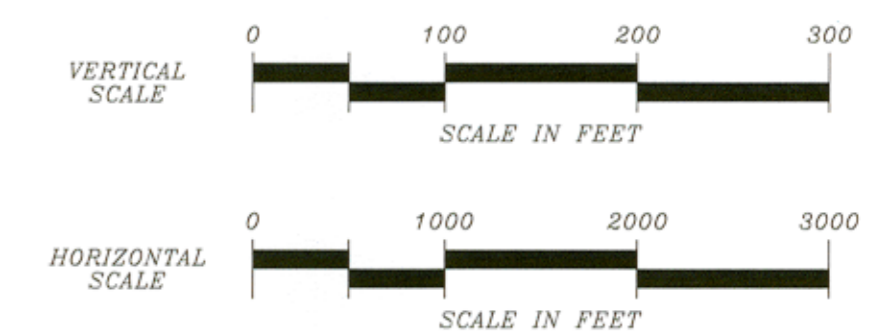
RUNWAY 17



RUNWAY 35



APPROACH ZONE PROFILES



RUNWAY 17-35 OUTER APPROACH SURFACE PLANS and PROFILES

GENERAL NOTES:

- Obstructions, clearances, and locations are calculated from existing runway and elevations and existing approach surfaces, unless otherwise noted.
- Depiction of features and objects within the primary, transitional, and horizontal Part 77 surfaces, is illustrated on the PART 77 AIRSPACE DRAWING
- Depiction of features and objects within the outer portion of the approach surfaces, are illustrated on the OUTER APPROACH SURFACE DRAWINGS

OBSTRUCTION TABLE

Object Description	Object Elevation	Obstructed Part 77 Surface	Surface Elevation	Object Penetration	Proposed Object Disposition
NONE FOUND	-	-	-	-	-

No.	REVISIONS	DATE	BY	APP'D.
	MASTER PLAN UPDATE	3-28-13	JMH	---
	REVALIDATED ALP - INSTALLATION OF AWOS	6-10	---	7-2-10
	FAA APPROVED MASTER PLAN	7-27-98	JMH	1998

COOLIDGE MUNICIPAL AIRPORT  
 RUNWAY 17-35 PROFILE AND OUTER  
 APPROACH SURFACE DRAWING  
 COOLIDGE, ARIZONA

PLANNED BY: Matt Quirk  
 DETAILED BY: Maggie Bezer  
 APPROVED BY: James M. Harris

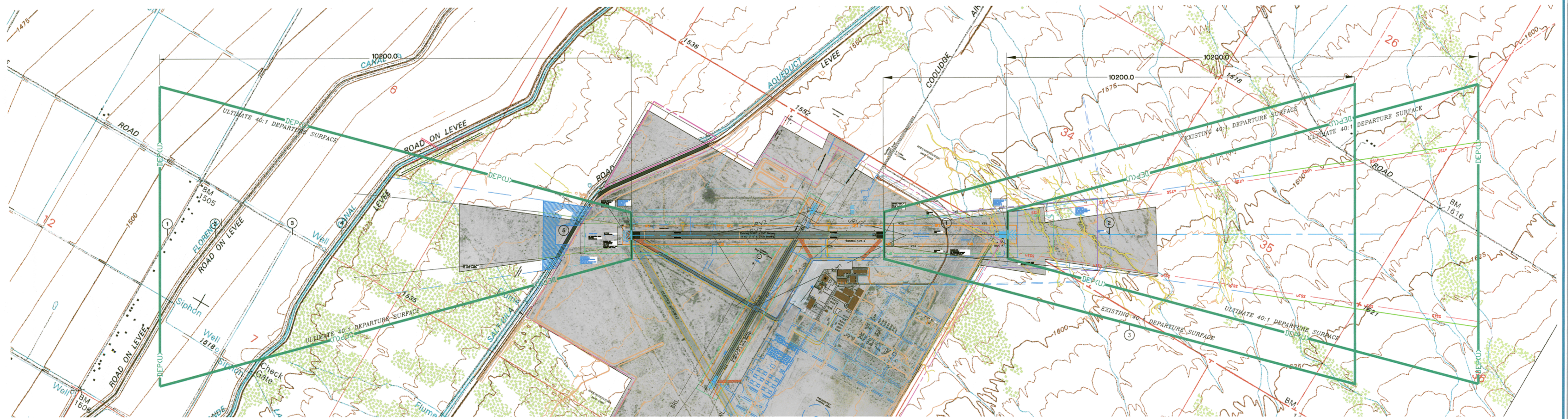
March 28, 2013 SHEET 7 OF 11



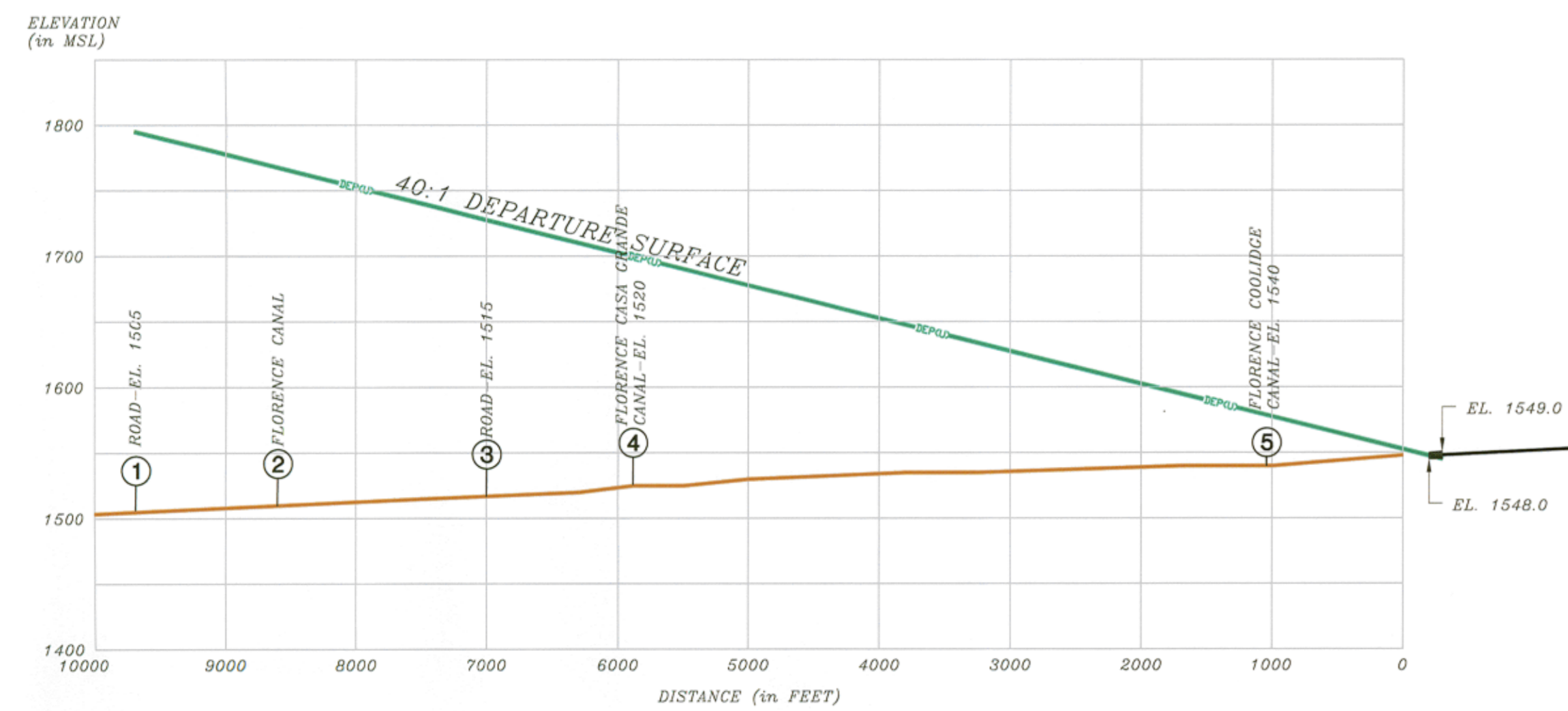
THE PREPARATION OF THESE DOCUMENTS WAS FINANCED IN PART THROUGH A PLANNING GRANT FROM THE FEDERAL AVIATION ADMINISTRATION AS PROVIDED UNDER SECTION 505 OF THE AIRPORT AND AIRWAY IMPROVEMENT ACT OF 1982, AS AMENDED. THE CONTENTS DO NOT NECESSARILY REFLECT THE OFFICIAL VIEWS OR POLICY OF THE FAA. ACCEPTANCE OF THESE DOCUMENTS BY THE FAA DOES NOT IN ANY WAY CONSTITUTE A COMMITMENT ON THE PART OF THE UNITED STATES TO PARTICIPATE IN ANY DEVELOPMENT DEPICTED HEREIN NOR DOES IT INDICATE THAT THE PROPOSED DEVELOPMENT IS ENVIRONMENTALLY ACCEPTABLE IN ACCORDANCE WITH APPROPRIATE PUBLIC LAWS.

Coffman Associates Inc. \\s:\client\13\drive 12 28 2013\Coolidge\2013\07 098 - DUT 17-35 - 02 28 2013.dwg Printed: 04/22/13 4:42:43 PM Margaret Beaver

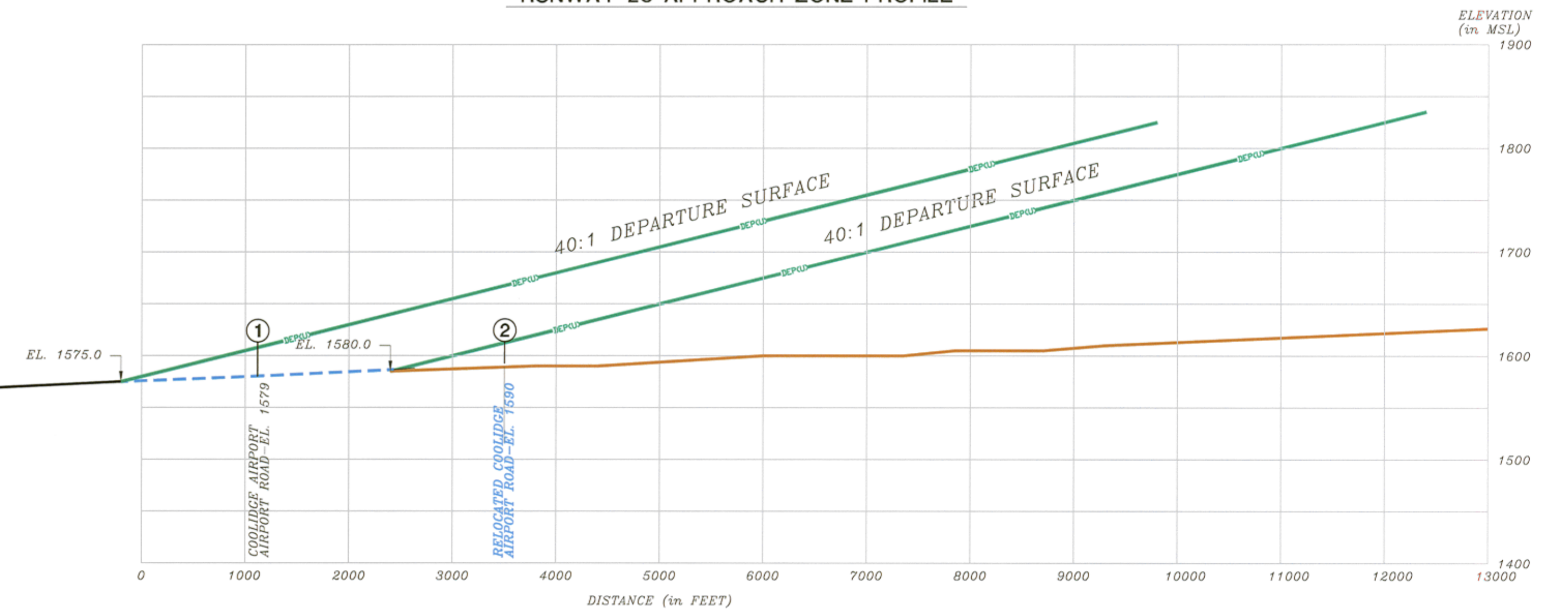




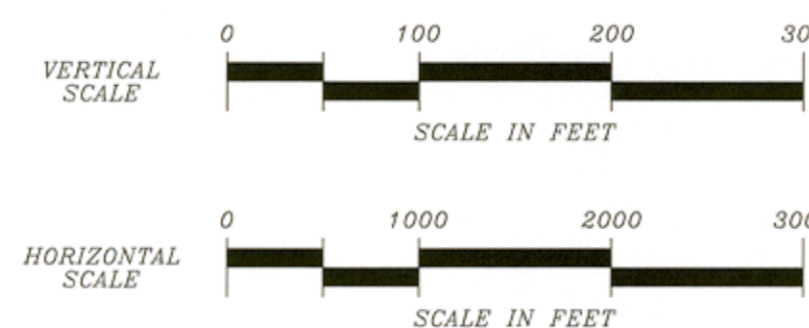
RUNWAY 5 APPROACH ZONE PROFILE



RUNWAY 23 APPROACH ZONE PROFILE



APPROACH ZONE PROFILES



GENERAL NOTES:

- Obstructions, clearances, and locations are calculated from existing runway end elevations and existing approach surfaces, unless otherwise noted.
- Depiction of features and objects within the primary, transitional, and horizontal Part 77 surfaces, is illustrated on the PART 77 AIRSPACE DRAWING.
- Depiction of features and objects within the outer portion of the approach surfaces, are illustrated on the OUTER APPROACH SURFACE DRAWINGS.

OBSTRUCTION TABLE

Object Description	Object Elevation	Obstructed Part 77 Surface	Surface Elevation	Object Penetration	Proposed Object Disposition
NONE FOUND	-	-	-	-	-

No.	REVISIONS	DATE	BY	APP'D.
1	MASTER PLAN UPDATE	3-28-13	JMH	---
2	REVALIDATED ALP - INSTALLATION OF AWOS	6-10-10	JMH	7-2-10
3	FAA APPROVED MASTER PLAN	7-27-98	JMH	1998

COOLIDGE MUNICIPAL AIRPORT  
 RUNWAY 5-23 DEPARTURE SURFACE DRAWING  
 COOLIDGE, ARIZONA

PLANNED BY: Matt Luick  
 DETAILED BY: Maggie Bear  
 APPROVED BY: James M. Harris

March 28, 2013 SHEET 8 OF 11

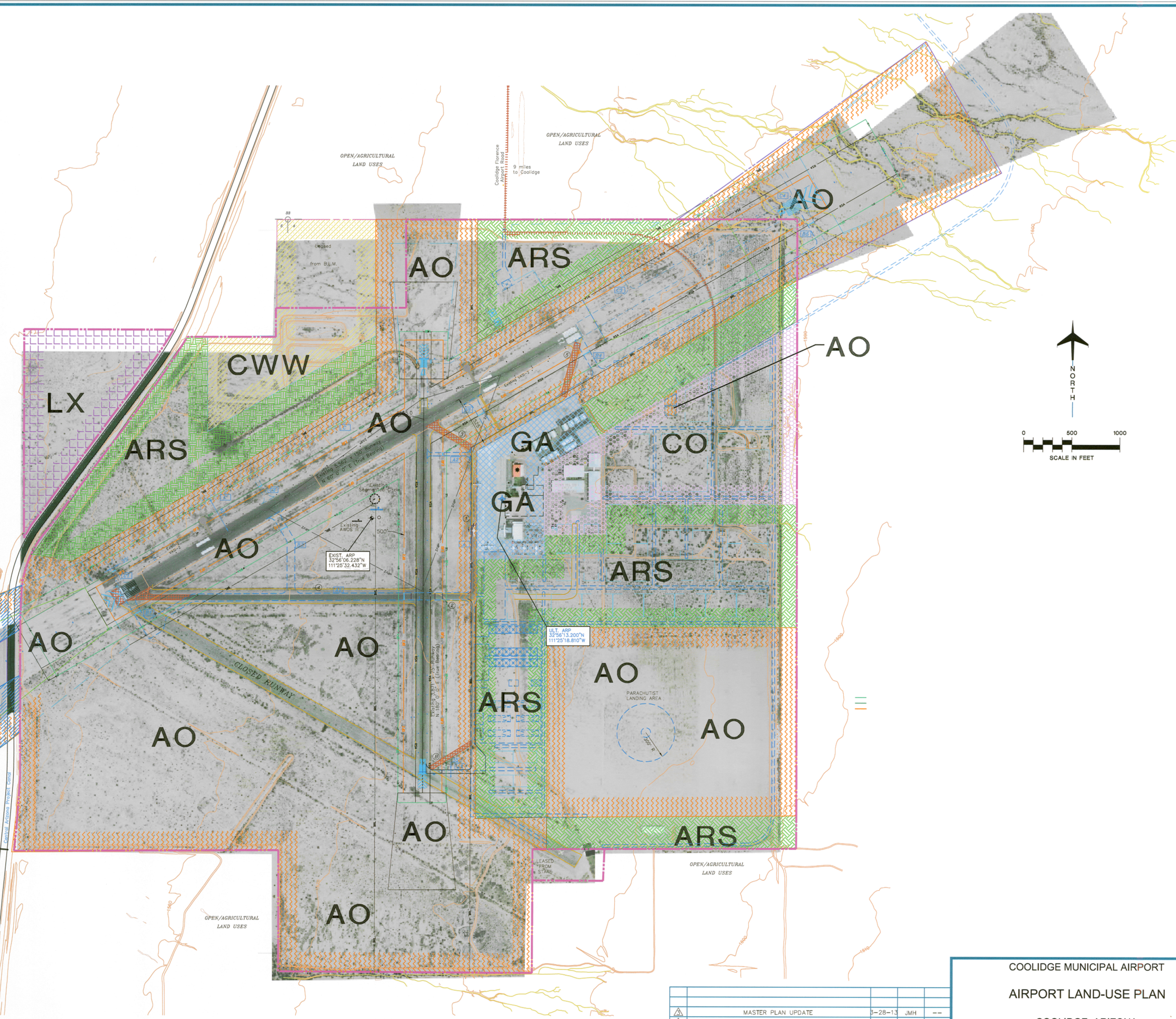
Coffman Associates \\sullivan\13 drive 12 28 2010\Cad\CAD\Coolidge\2013\08 P109\_P109\_P109.dwg 3/28/2013 10:05:13 AM Margaret Brewer



ON-AIRPORT LAND USE LEGEND			
	AIRFIELD OPERATIONS (± 860.8 ACRES)		GENERAL AVIATION (± 27.2 ACRES)
	AVIATION RELATED REVENUE SUPPORT (± 252.6 ACRES)		FUTURE CITY WASTE WATER TREATMENT FACILITY (± 47.7 ACRES)
	COMMERCIAL (± 73.3 ACRES)		POTENTIAL LAND SALE/EXCHANGE (± 38.5 ACRES)

BASE MAP: AERIAL PHOTO TAKEN AUGUST 2009

LEGEND		
EXISTING	ULTIMATE	DESCRIPTION
		AIRPORT PROPERTY LINE
		AIRPORT REFERENCE POINT (ARP)
		AIRPORT ROTATING BEACON
		BUILDING AND FACILITIES
		PAVEMENT TO BE REMOVED
		BUILDING RESTRICTION LINE (BRL)
		OBJECT FREE AREA (OFA)
		RUNWAY SAFETY AREA (RSA)
		OBSTACLE FREE ZONE (OFZ)
		AIRPORT PAVEMENT
		FENCING
		NAVIGATIONAL AID INSTALLATION
		NAVIGATIONAL AID INSTALLATION
		RUNWAY END IDENTIFICATION LIGHTS (REIL)
		RUNWAY THRESHOLD LIGHTS
		RUNWAY PROTECTION ZONE (RPZ)
		SEGMENTED CIRCLE/WIND CONE
		WIND INDICATOR
		TOPOGRAPHIC CONTOURS
		SECTION CORNER
		TAXWAY DESIGNATION
		AUTOMATED WEATHER OBSERVATION STATION (AWOS)
		HOLD POSITION MARKINGS
		HELICOPTER HARDSTANDS
		RUNWAY LIGHTS
		ABANDONED PAVEMENT



No.	REVISIONS	DATE	BY	APP'D.
1	MASTER PLAN UPDATE	3-28-13	JMH	--
2	REVALIDATED ALP - INSTALLATION OF AWOS	6-10	--	7-2-10
3	FAA APPROVED MASTER PLAN	1-27-98	JMH	1998

**COOLIDGE MUNICIPAL AIRPORT**  
**AIRPORT LAND-USE PLAN**  
COOLIDGE, ARIZONA

PLANNED BY: *Matt Quick*  
 DETAILED BY: *Maggie Beaser*  
 APPROVED BY: *James M. Harris*

March 28, 2013 SHEET 10 OF 11

Coffman Associates, 1200 N. Central Expressway, Suite 1200, Phoenix, AZ 85004, Phone: 602.955.1200, Fax: 602.955.1201, Email: info@coffmanassociates.com, Website: www.coffmanassociates.com

