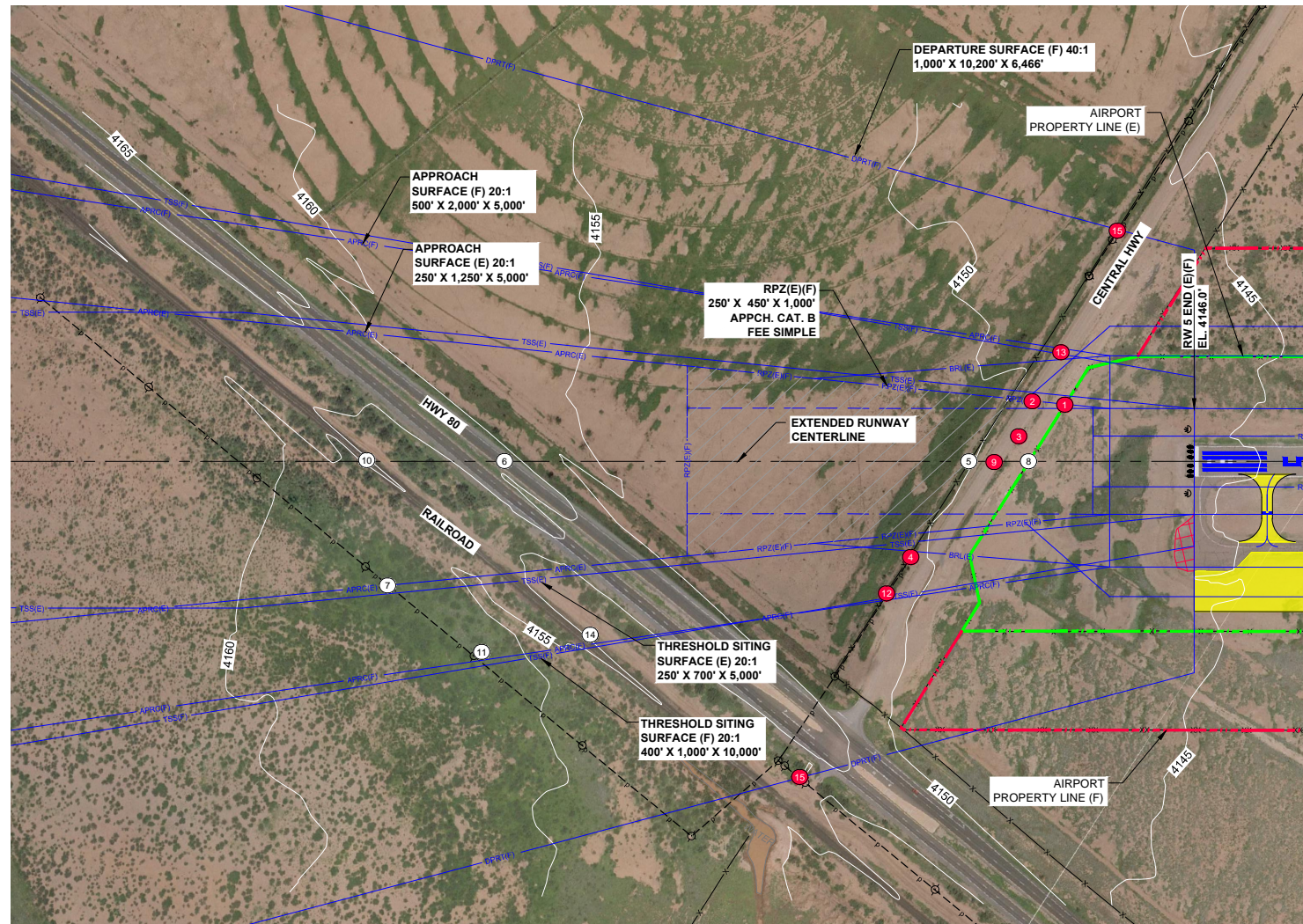


LEGEND					
EXISTING	FUTURE	DESCRIPTION	EXISTING	FUTURE/ULTIMATE	DESCRIPTION
		AIRFIELD DEVELOPMENT (ASPHALT)			THRESHOLD LIGHTS
		STRUCTURE/FACILITIES (BUILDING)			REIL
		AIRPORT PROPERTY LINE (APL)			VASI/PAPI
—RSA(E)—	—RSA(F)—	RUNWAY SAFETY AREA (RSA)			AIRPORT BEACON
—OFZ(E)—	—OFZ(F)—	OBSTACLE FREE ZONE (OFZ)			WIND CONE & SEGMENTED CIRCLE
—ROFA(E)—	—ROFA(F)—	RUNWAY OBJECT FREE AREA (ROFA)			AWOS
—RPZ(E)—	—RPZ(F)—	RUNWAY PROTECTION ZONE (RPZ)			LIGHTED WINDCONE
—BRL(E)—	—BRL(F)—	BUILDING RESTRICTION LINE (BRL)		N/A	SECTION CORNER
—TSA(E)—	—TSA(F)—	TAXIWAY SAFETY AREA (TSA)			DRAINAGE / WATER EDGE
—TOFA(E)—	—TOFA(F)—	TAXIWAY OBJECT FREE AREA (TOFA)		N/A	CONTOURS
—APRC(E)—	—APRC(F)—	APPROACH SURFACE			ROADS
—TSS(E)—	—TSS(F)—	THRESHOLD SITING SURFACE			MARKINGS
		AIRPORT REFERENCE POINT (ARP)			FENCING
	N/A	PACS/SACS MONUMENT		N/A	TREES
		TO BE REMOVED			CULVERT
	N/A	UTILITY POLE / LIGHT POLE		N/A	POWER LINE
	N/A	PARCEL LINES		N/A	AVIGATION EASEMENT
	N/A	COMPASS CALIBRATION MARKING	NOTE: SOME LINES AND SYMBOLS MAY NOT BE PRESENT ON DRAWING		



RUNWAY 5 PLAN (E)(F)

SCALE: PER BARSCALE

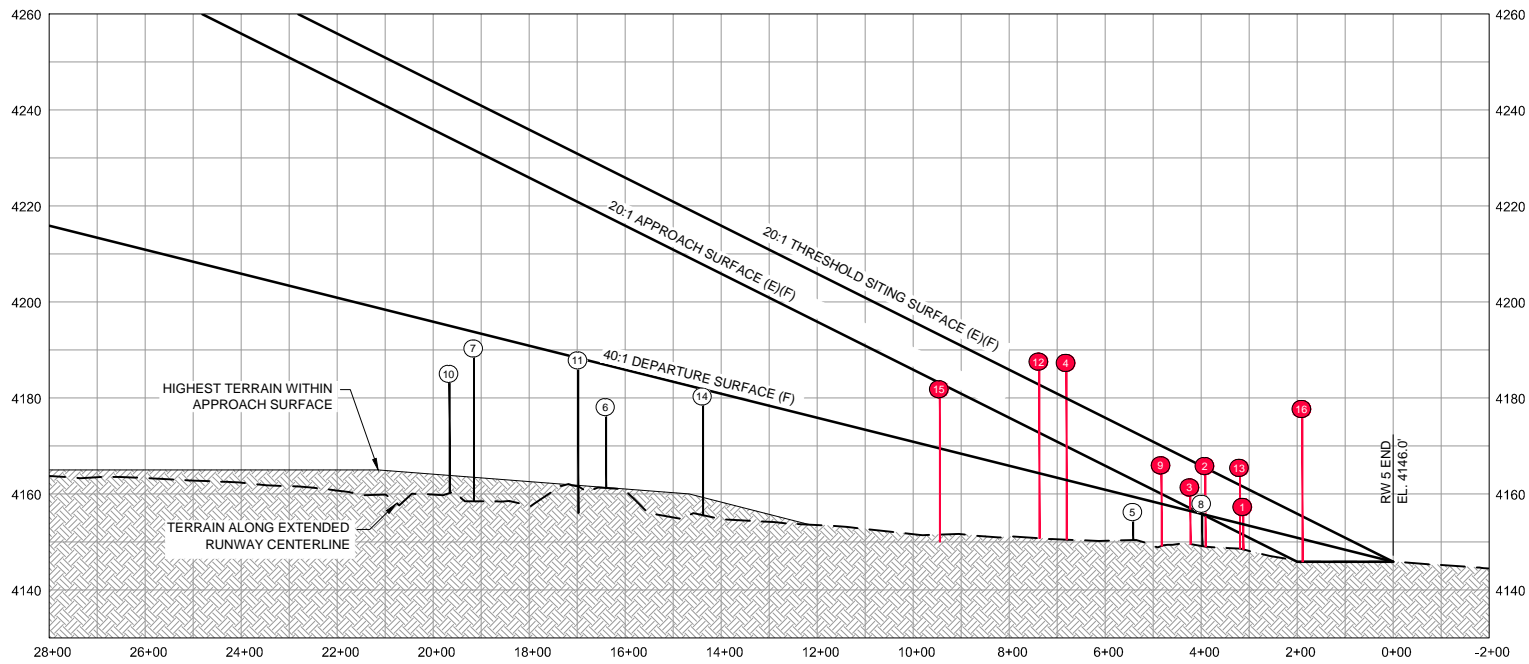
OBJECTS WITHIN RUNWAY 5 INNER APPROACH SURFACE (E)(F)											
No.	OBJECT	SURFACE(S) PENETRATED	GROUND ELEVATION	ESTIMATED OBJECT HT.	TOP ELEVATION (MSL)	PENETRATION					PROPOSED ACTION
						40:1 DEPT (F)	20:1 TSS (E)	20:1 TSS (F)	20:1 APPCH (F)	20:1 APPCH (E)	
1	FENCE	APPCH/TSS/DEPT	4149'	7'	4156'	+2'	-6'	-6'	+4'	+4'	SEE NOTES 1 & 2
2	CENTRAL HWY	APPCH/TSS/DEPT	4149'	15'	4164'	+8'	-1'	-1'	+8'	+8'	SEE NOTES 1 & 2
3	SIGN	APPCH/TSS/DEPT	4150'	10'	4160'	+3'	-7'	-7'	+2'	+2'	SEE NOTES 1 & 2
4	UTILITY POLE	APPCH/TSS/DEPT	4150'	35'	4185'	+23'	N/A	+6'	+6'	N/A	SEE NOTES 1, 2 & 3
5	FENCE	NONE	4150'	4'	4154'	-5'	-6'	-6'	-8'	-8'	
6	HWY 80	NONE	4161'	15'	4175'	-10'	-51'	-51'	-41'	-41'	
7	OVERHEAD POWER LINE	NONE	4158'	30'	4188'	-5'	-53'	-53'	-43'	-43'	
8	FENCE	NONE	4149'	7'	4156'	-0'	-9'	-9'	-0'	-0'	
9	CENTRAL HWY	APPCH/TSS/DEPT	4149'	15'	4164'	+6'	-6'	-6'	+4'	+4'	SEE NOTES 1 & 2
10	RAILROAD	NONE	4160'	23'	4183'	-12'	-61'	-61'	-51'	-51'	
11	OVERHEAD POWER LINE	NONE	4156'	30'	4186'	-2'	-44'	-44'	-54'	N/A	
12	OVERHEAD POWER LINE	APPCH/TSS/DEPT	4151'	30'	4181'	+21'	N/A	+3'	+13'	N/A	SEE NOTES 1, 2 & 3
13	CENTRAL HWY	APPCH/TSS/DEPT	4159'	15'	4174'	+10'	N/A	+2'	+12'	N/A	SEE NOTES 1, 2 & 3
14	RAILROAD	NONE	4155'	23'	4178'	-3'	N/A	N/A	-29'	N/A	
15	OVERHEAD POWER LINE	DEPARTURE	4150'	30'	4180'	+10'	N/A	N/A	N/A	N/A	SEE NOTE 3
16	OVERHEAD POWER LINE	DEPARTURE	4147'	30'	4177'	+25'	N/A	N/A	N/A	N/A	SEE NOTE 3

OBJECT ELEVATIONS IN FEET MSL (VERTICAL DATUM NAVD88) A REVIEW OF THE FAA OE/AAA DATA BASE WAS CONDUCTED. OBJECT ELEVATIONS ARE ESTIMATED AND NOT BASED ON A SURVEY

THERE ARE THRESHOLD SITING SURFACE PENETRATIONS

● = OBJECT PENETRATION LOCATION

- NOTES:
- PART 77 SURFACE PENETRATIONS: LOWER, MARK AND LIGHT, OR REMOVE PER FAA FLIGHT PROCEDURES OFFICE DETERMINATION.
 - DEPARTURE SURFACE PENETRATION NOTE: LESS THAN 35' LOW, CLOSE-IN DEPARTURE SURFACE PENETRATION: ADD NOTE TO DEPARTURE PROCEDURE OR LOWER, MARK AND LIGHT OR REMOVE PER FAA FLIGHT PROCEDURES OFFICE DETERMINATION.
 - THRESHOLD SITING SURFACE PENETRATIONS: REMOVE OR BURY PER FAA FLIGHT PROCEDURES OFFICE DETERMINATION.
 - PHOTOGRAMMETRY DATED AUGUST 22, 2011.



RUNWAY 5 PROFILE (E)(F)

SCALE: PER GRID

No.	Project No.	Date	Revision / Description	Drwn.	Chkd.	Apprvd.
0	116035	01/20/14	ORIGINAL ISSUE	JOS	JZP	DAC
				File	Drwn.	Chkd.

This document was prepared, in part, under a grant provided by the Arizona Department of Transportation, meso-aeronautics group. The approval of this planning material developed as part of this grant does not constitute or imply assurance or commitment on the part of the state to approve pending or future application for a state grant or funding.