

*Salt River Pima-Maricopa Indian Community*

# Long Range Transportation Plan

AND TRIBAL TRANSPORTATION SAFETY PLAN

**SRPMIC Transportation Safety and Planning  
Arizona Tribal Transportation Safety &  
Injury Prevention Summit**

*August 9, 2023*

Kimley»Horn

# SRPMIC Introduction

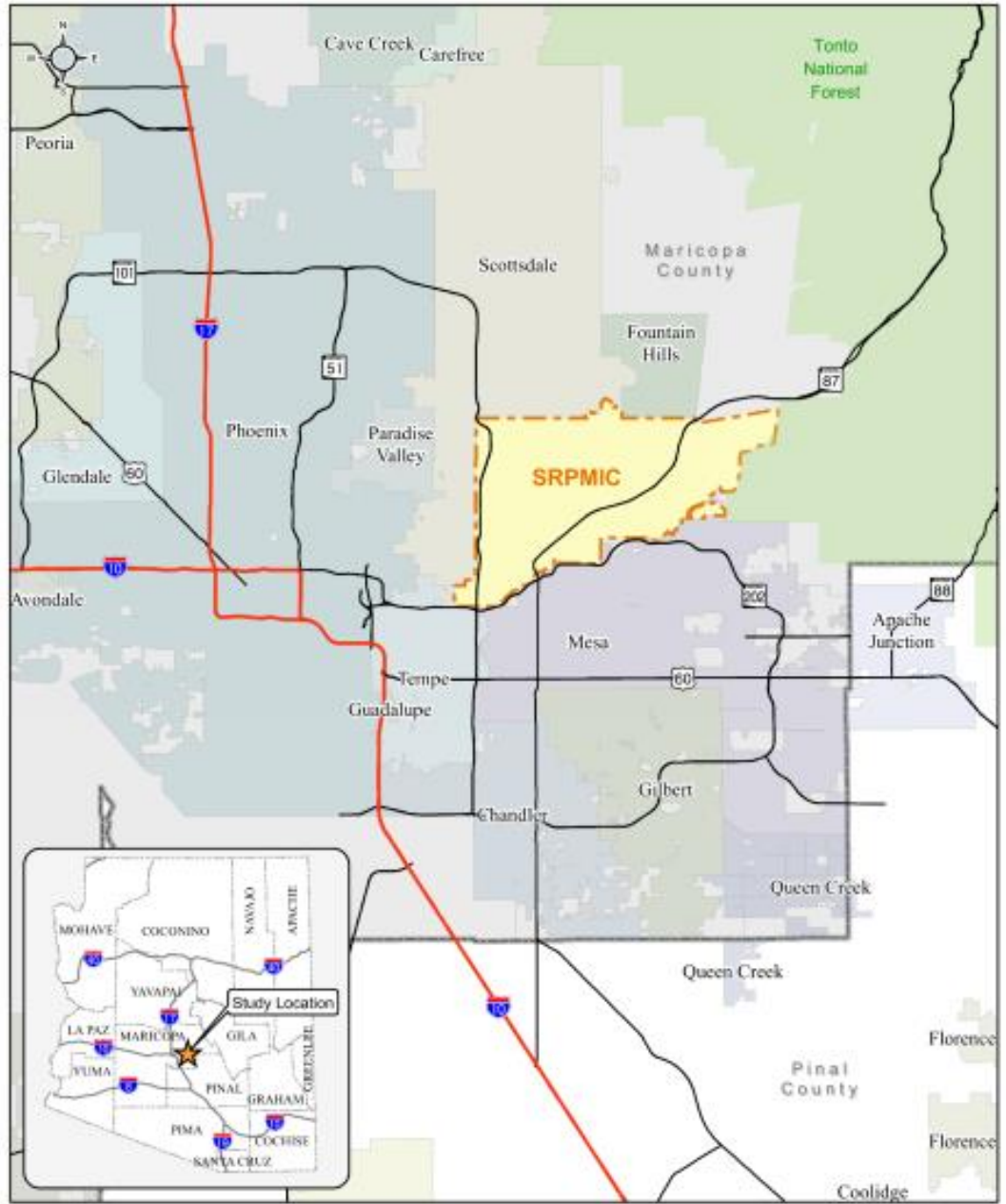
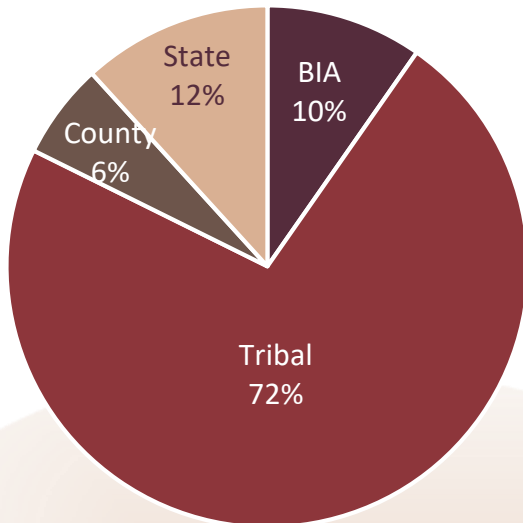


■ Demographics

- 52,600 acres
- Tribal and allotted land
- 11,022 enrolled members

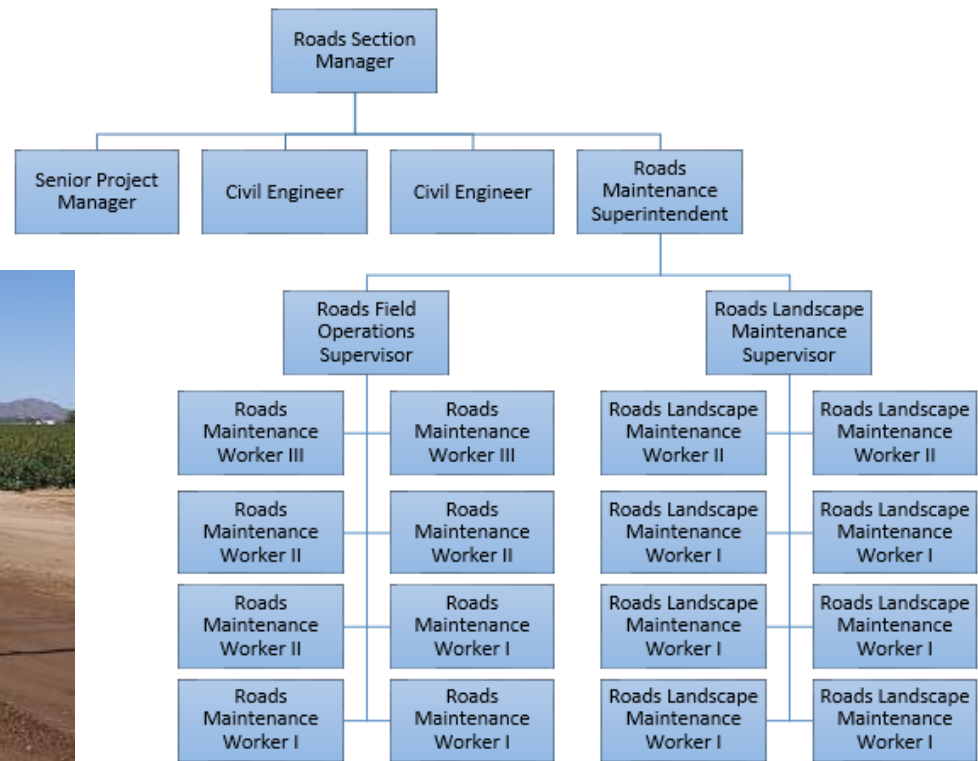
■ TTP System Inventory

- 196 miles total
- 138 miles paved
- 47 miles unpaved
- 11 proposed



# Roads Organization

- Transportation Planning
- Project Management
  - Design
  - Construction
- Road Maintenance



# Public Involvement

- Stakeholder Workshops
- Council Work Session
- Tribal Safety Fairs
- Technical Advisory Committee
- O'odham Action News
- Public Hearing
- Council District Meetings

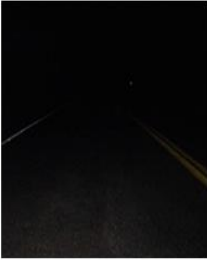








## Public Works

### Street Light Survey

Public Works will be installing a new sidewalk along Mesa Drive from Indian School Road to the Arizona Canal and Camelback Road from Center Street to Mesa Drive. We would like your input to determine the level of street lighting desired for the project. We would also like your opinion on preferred street lighting levels in general throughout the Community. Using one of the methods below, please select the amount of street lighting you would prefer for the **project** and **Community-wide**.

Dark Sky Rural Setting	Select Locations (bus stops, high crash areas, intersections)	Major Streets or High Residential Locations	Community-wide Urban Setting
			
			

Let us know your preferred lighting level for each area:

Project (Mesa Dr. & Camelback)

Community-wide



**PUBLIC OUTREACH Survey Website**

SCAN FOR SURVEY

**Public Works Speed Cushion Survey**

Excessive speeds, cut-through traffic, and reports of drag racing have become a concern on McDowell Road in Lehi. Speed measurements show that vehicles are generally travelling 45 mph (posted speed of 35 mph). The installation of speed cushions have been shown to help mitigate these issues. The downfall to speed cushions include nuisance to residents, more wear on vehicles and safety to pedestrians if vehicles try to go around them.

The Public Works Department would like to solicit input from Community Members to determine whether speed cushions are desired at this location. Please vote below on whether you would like to see speed cushions installed on McDowell Road, from Mesa Drive to Gilbert Road.

<https://www.srpmic-nsn.gov/government/public-works/survey/>  
Please cast your vote | Link will expire on June 2nd, 2023

# Leadership

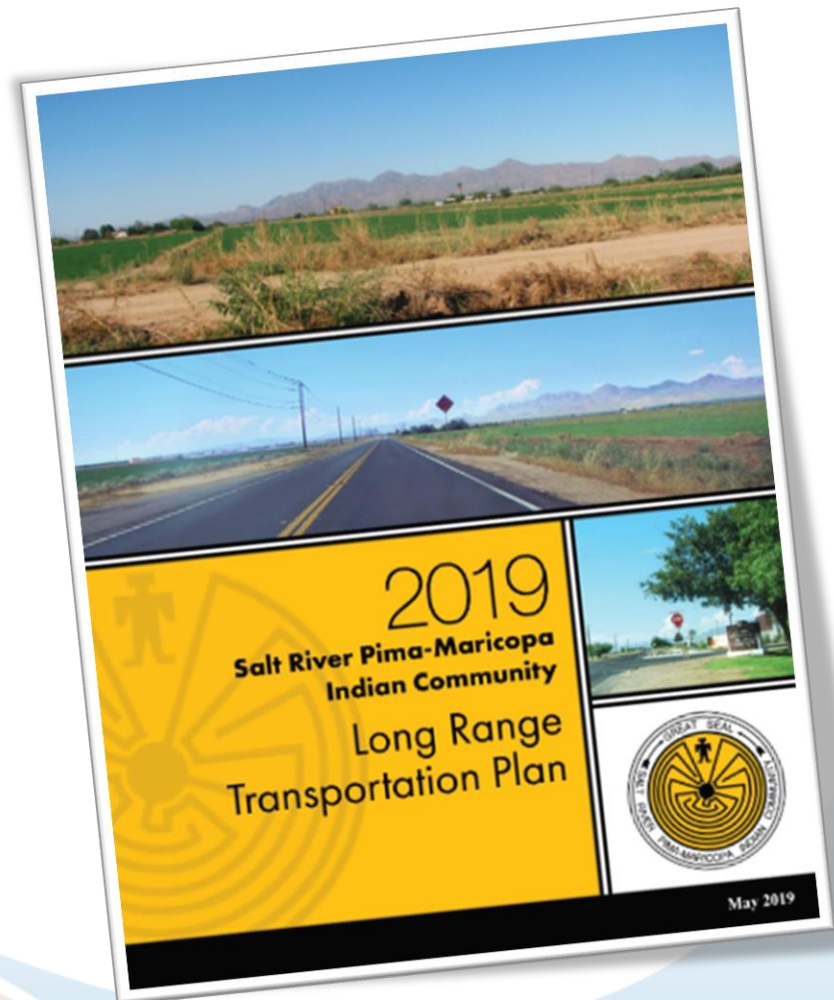
- Meet with Council
  - Work sessions
  - Transportation 101
  - Annual TTIP is an opportunity to present on project status





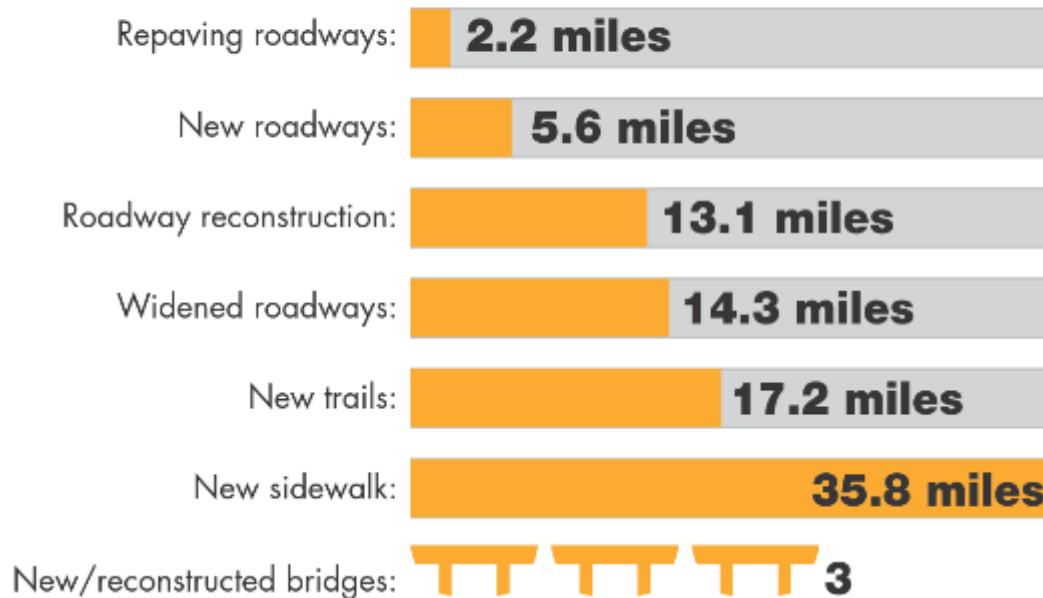
# Long Range Transportation Plan

- The LRTP looks at data, needs, models for future growth, and identifies a list of projects
  - Traffic Counts/Traffic Demand
  - Crash Data/Public Safety
  - Pavement Condition
  - Community and Stakeholder Input
  - Land Use/Economic Development



# Priority Projects

## 100 Transportation Improvements Proposed to be Implemented over the Next 20 Years



- Routine maintenance
- Traffic safety projects
- Ongoing transportation planning
- Traffic calming

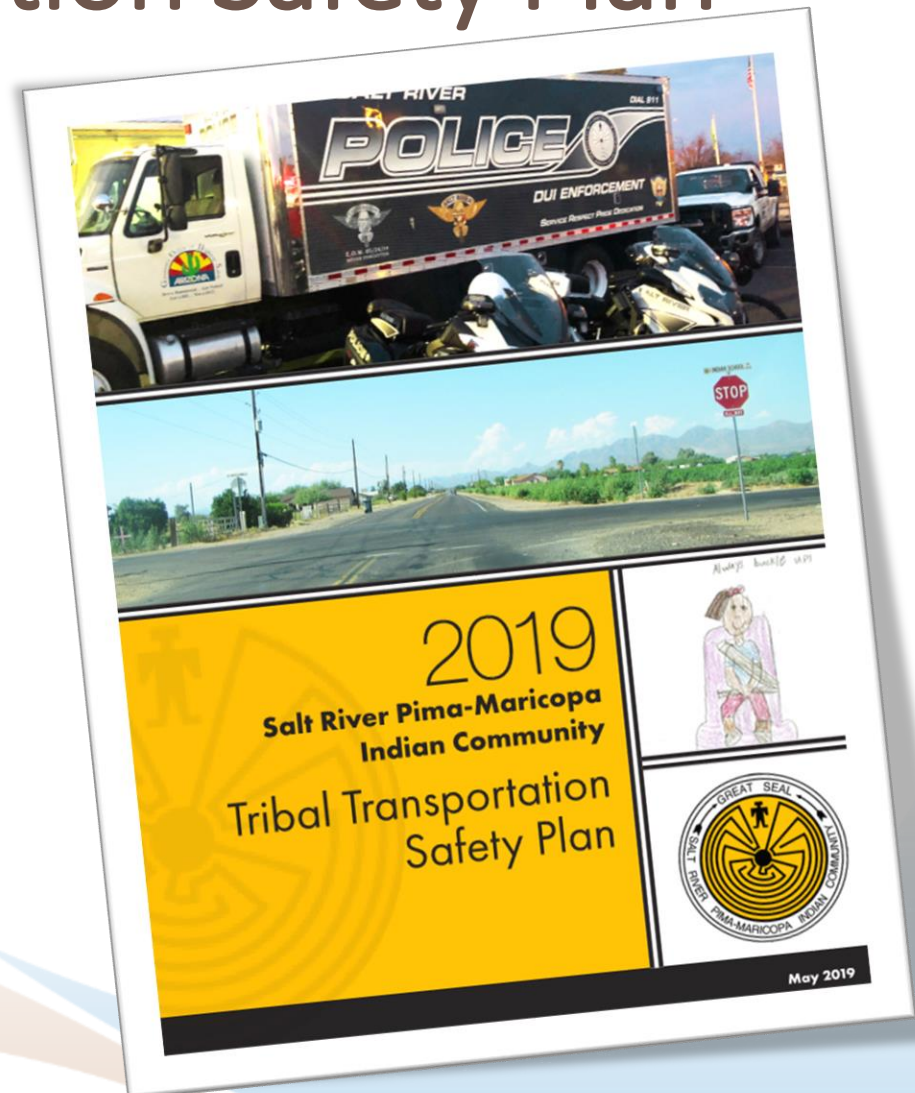


# Trail and Sidewalk Projects

- Phased approach
- Projects coinciding with Trail System will include pedestrian improvements
- Occasionally have stand alone pedestrian improvement projects

# Tribal Transportation Safety Plan

- Review historical data
- Establish a vision
- Engage safety partners and resources
- Identify critical safety emphasis area
- Develop strategies
- Identify and prioritize projects
- Solicit public input



# Emphasis Areas



**INFRASTRUCTURE**



**BICYCLES/  
PEDESTRIANS**



**OCCUPANT  
PROTECTION**



**IMPAIRED  
DRIVING**



**SPEEDING/  
AGGRESSION**



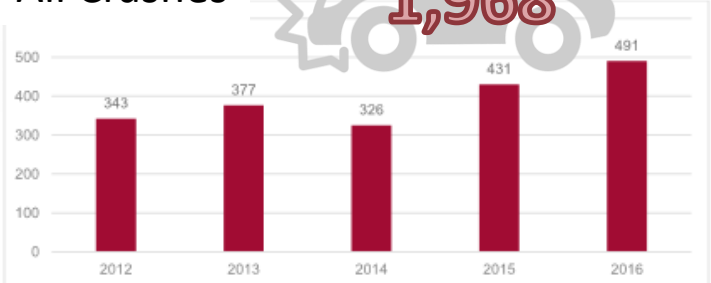
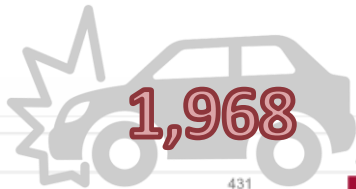
**INCIDENT  
RESPONSE**



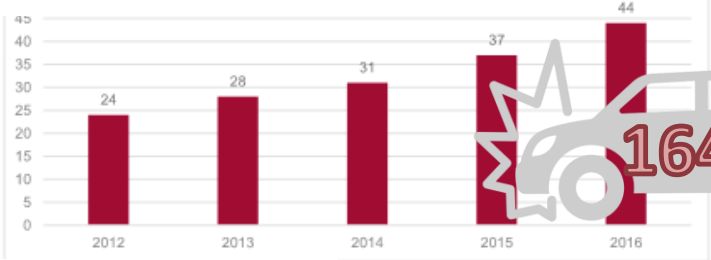
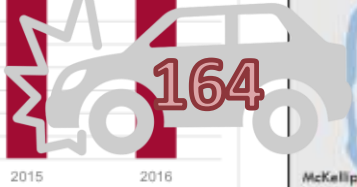
**DATA NEEDS**

# Crash Data

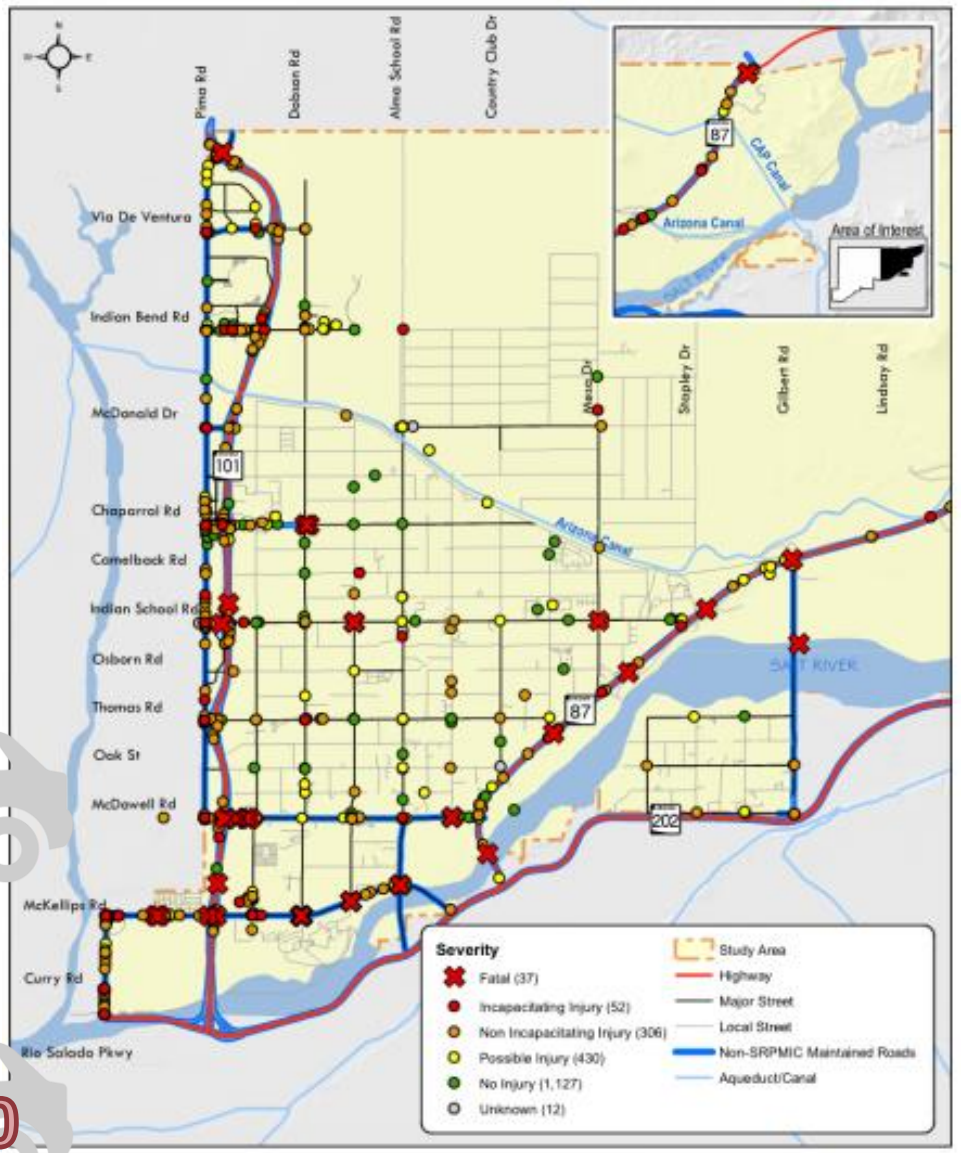
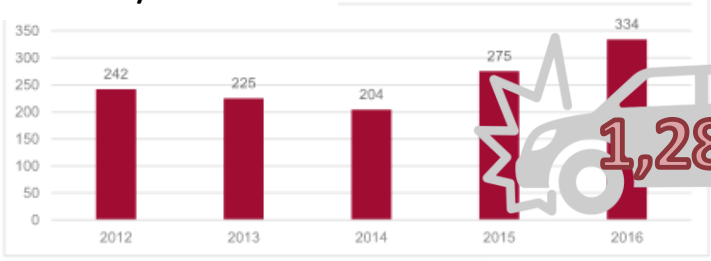
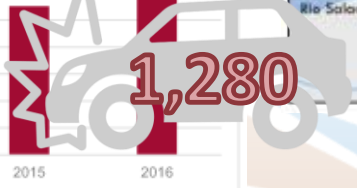
All Crashes



SRPMIC/BIA Roads

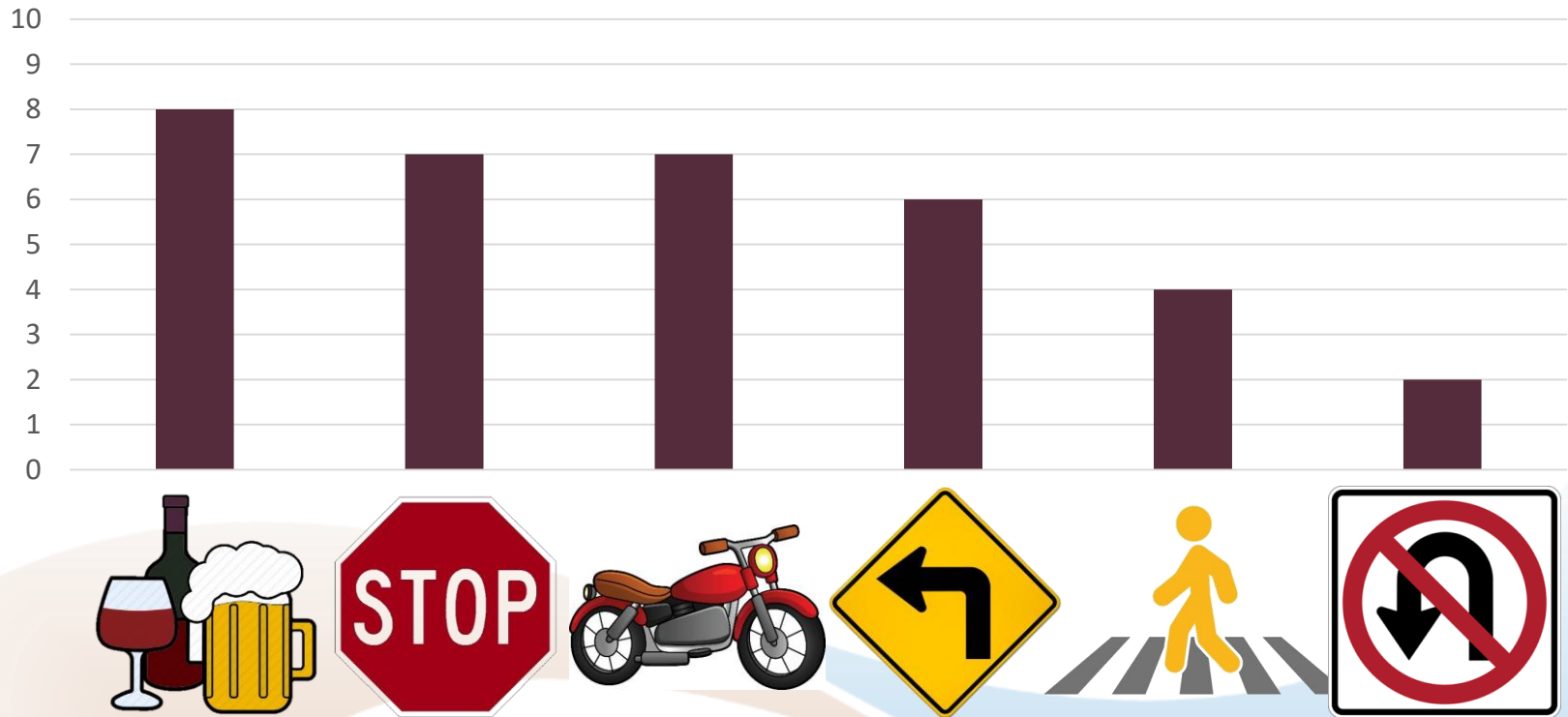


SR101/Pima Rd



# Analysis of Severe Crash Narratives

- Crash narratives were available for 39 of the fatal and incapacitating injury crashes, identifying several trends.

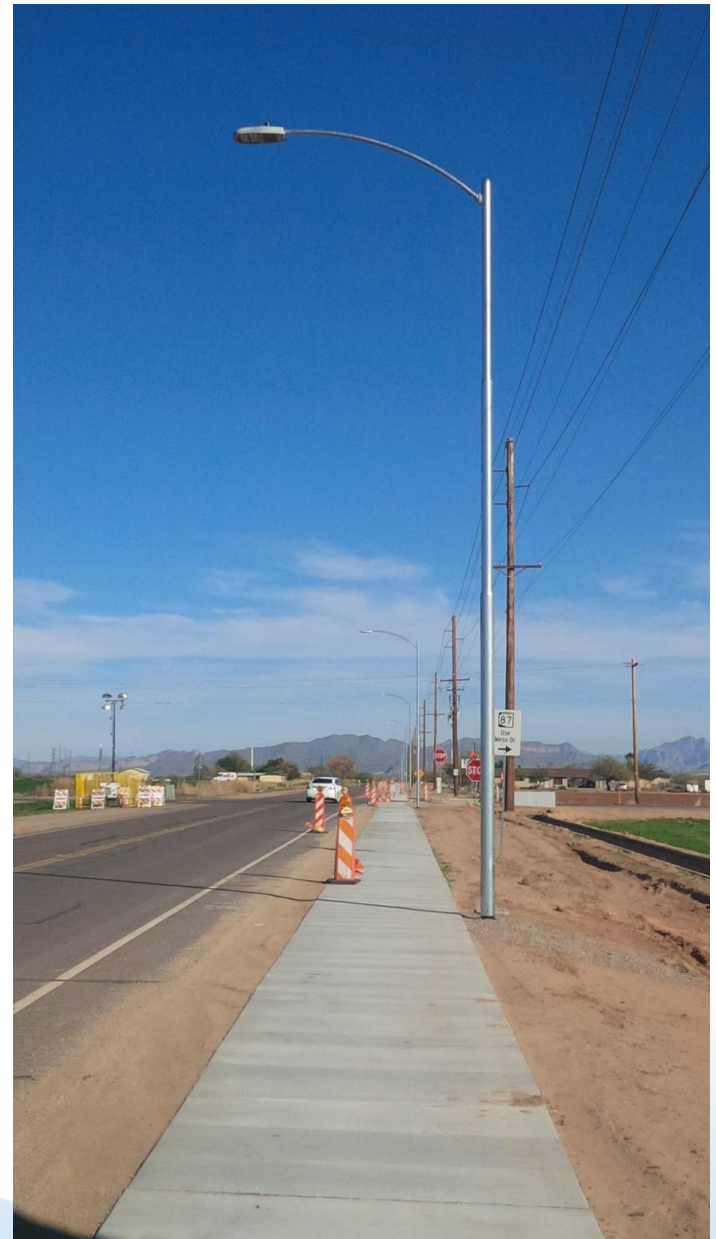


# Distracted Driving

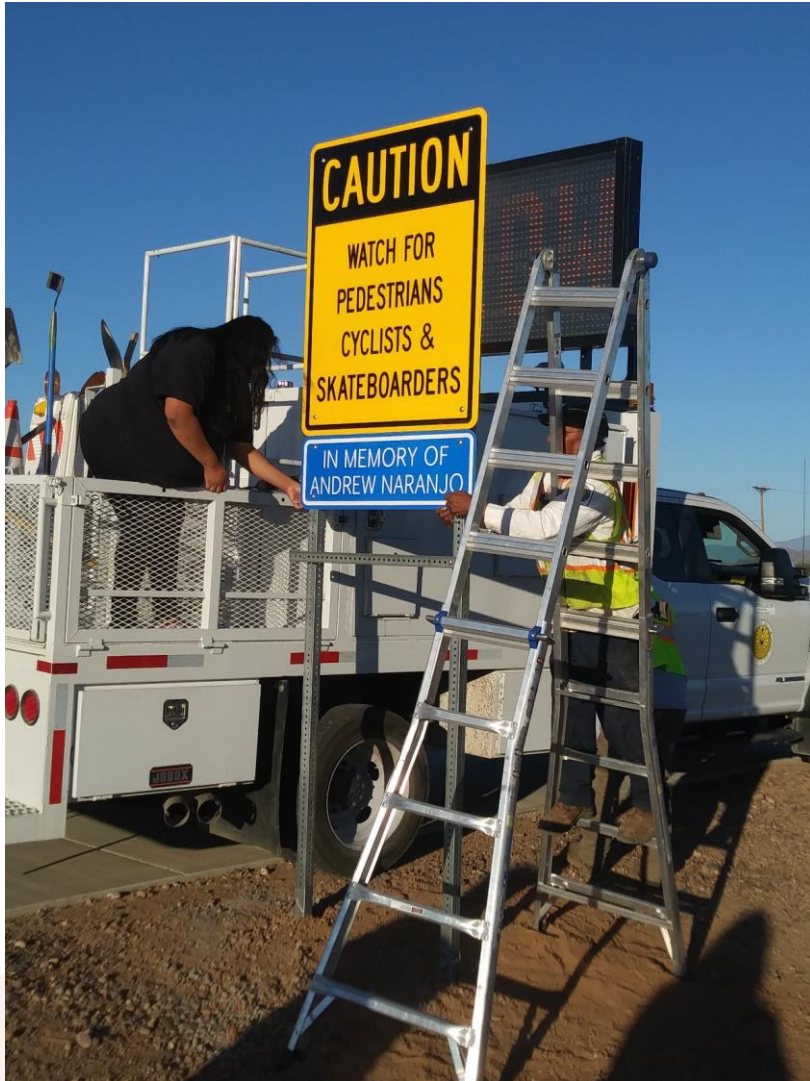




# Pedestrian Safety



# Pedestrian Safety



# Safe Routes to School



## SAFE ROUTES to SCHOOL

We need your input!  
Please respond to a short  
survey to improve school  
transportation safety

Surveys due  
October 20<sup>th</sup>

English

<https://redcap.link/SafeRoutesToSchool>

Spanish

<https://redcap.link/viajesescolares>



# Safe Routes to School



**STANLEYCONSULTANTS**

Safe Routes to School Study  
Salt River Schools  
Salt River Pima-Maricopa Indian Community

Contract No:  
938-P Project No: 0600-0180-20-E001-0938-0P.SR2207

Submittal: January 2023

**SALT RIVER SCHOOLS**

**MARICOPA ASSOCIATION of GOVERNMENTS**

# Low-Cost Countermeasures at Stop-Controlled Intersections

- A combination of low-cost treatments to provide advanced warning and improved visibility at stop-controlled intersections.
  - Oversized advanced “Stop Ahead”
  - Oversized stop signs
  - Retroreflective sheeting on sign posts
  - Properly placed stop bar
  - Removal of line-of-sight obstructions
  - Double arrow warning at “T” intersections
  - Transverse rumble strips
  - LED flashers on stop signs



# TTPSF Safety Project



# Traffic Counts (Speed/Classification)



Figure 7. Posted Speed Limits and Roads Recording 85<sup>th</sup> Percentile Speeds Exceeding 10 mph over the Speed Limit

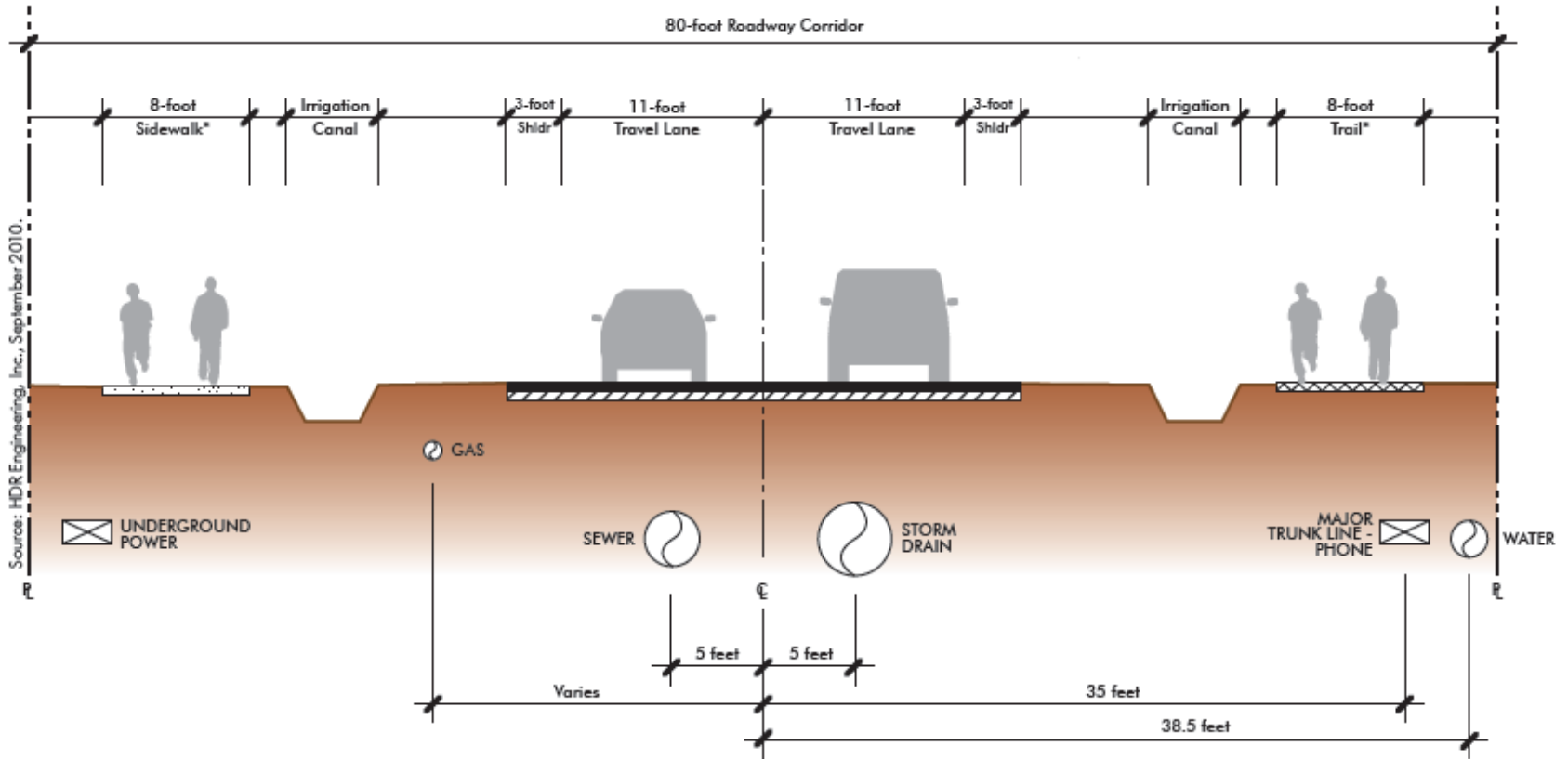


# Speed Management

- Reducing Lane Width
- Gateway Treatments
- Speed Pavement Markings
- Speed Feedback Signs
- Roundabout
- Speed Hump/Table/Cushion
- Chicane



# Reduced Lane Widths



Sources: HDR Engineering, Inc., September 2010.

\* Eight-foot trail/sidewalk will be for designated locations.

# Gateway Treatments



# Speed Pavement Markings



# Speed Feedback Signs



# Speed Hump/Table/Cushion



# Chicane



# Chicane



Roadway	Overall Reduction of 85th Percentile Speed (MPH)	% of Vehicles > 35 MPH
Thomas Rd (EB)	5	27.9%
Thomas Rd (WB)	13	45.7%
Dobson Rd (NB)	9	58.1%
Dobson Rd (SB)	8	61.5%

# Chicane





Questions or Comments:

Jennifer Jack

Roads Section Manager

480-362-7747

[jennifer.jack@srpmic-nsn.gov](mailto:jennifer.jack@srpmic-nsn.gov)

<https://www.srpmic-nsn.gov/government/public-works/transportation-planning/>