

PASCUA YAQUI

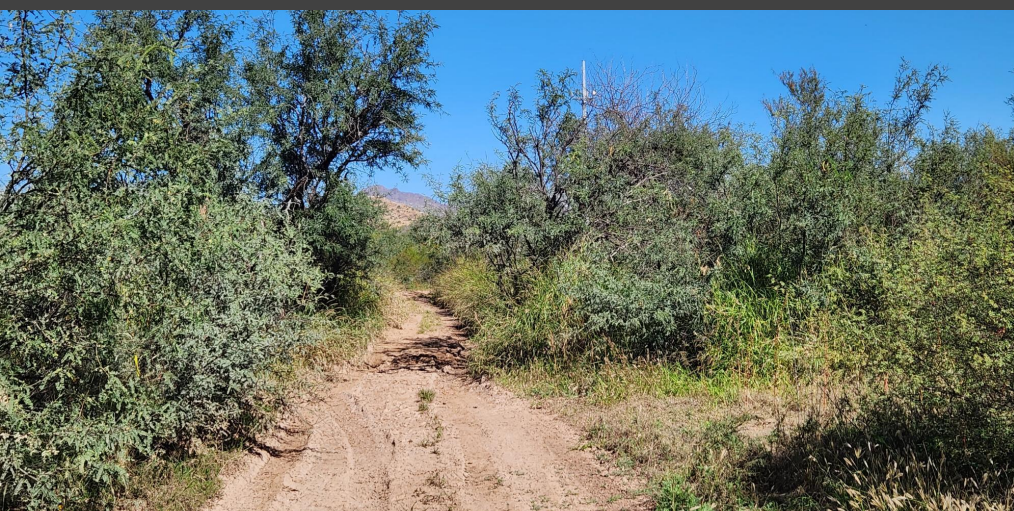
Black Wash Trail

(Red Tail Hawk Trail)





Black Wash Area -Current Conditions



MULTI-USE BENEFITS:

Valuable Wildlife Corridor

Ground Water Recharge

Recreational & Health Benefits

•CURRENT USERS

- ATV'S
- Bicyclist
- Equestrian
- Hikers





Example: Tumacacori National Historical Park Trail



Example: Borton Magnet Elementary School Outdoor Learning



Offers learning opportunities for STEM and Nature



Rock lined path encourages people to stay on trail



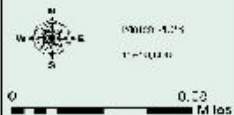
Example: Julian Wash Trail
Art, signs and Permanent Shade Structures

Pascua Yaqui Black Wash Trail Concept

Streets

Black Wash Trail

Black Wash Trailhead



© 2008, Pima County, Arizona. All rights reserved. This map is a conceptual representation of the proposed trail and does not constitute a guarantee of the accuracy of the information. The trail is subject to change without notice. For more information, contact the Pima County Parks & Recreation Department at (520) 797-2200.

