

W24-1bR

DOUBLE REVERSE CURVE (3 LANES)

W24-1bL

DOUBLE REVERSE CURVE (3 LANES)

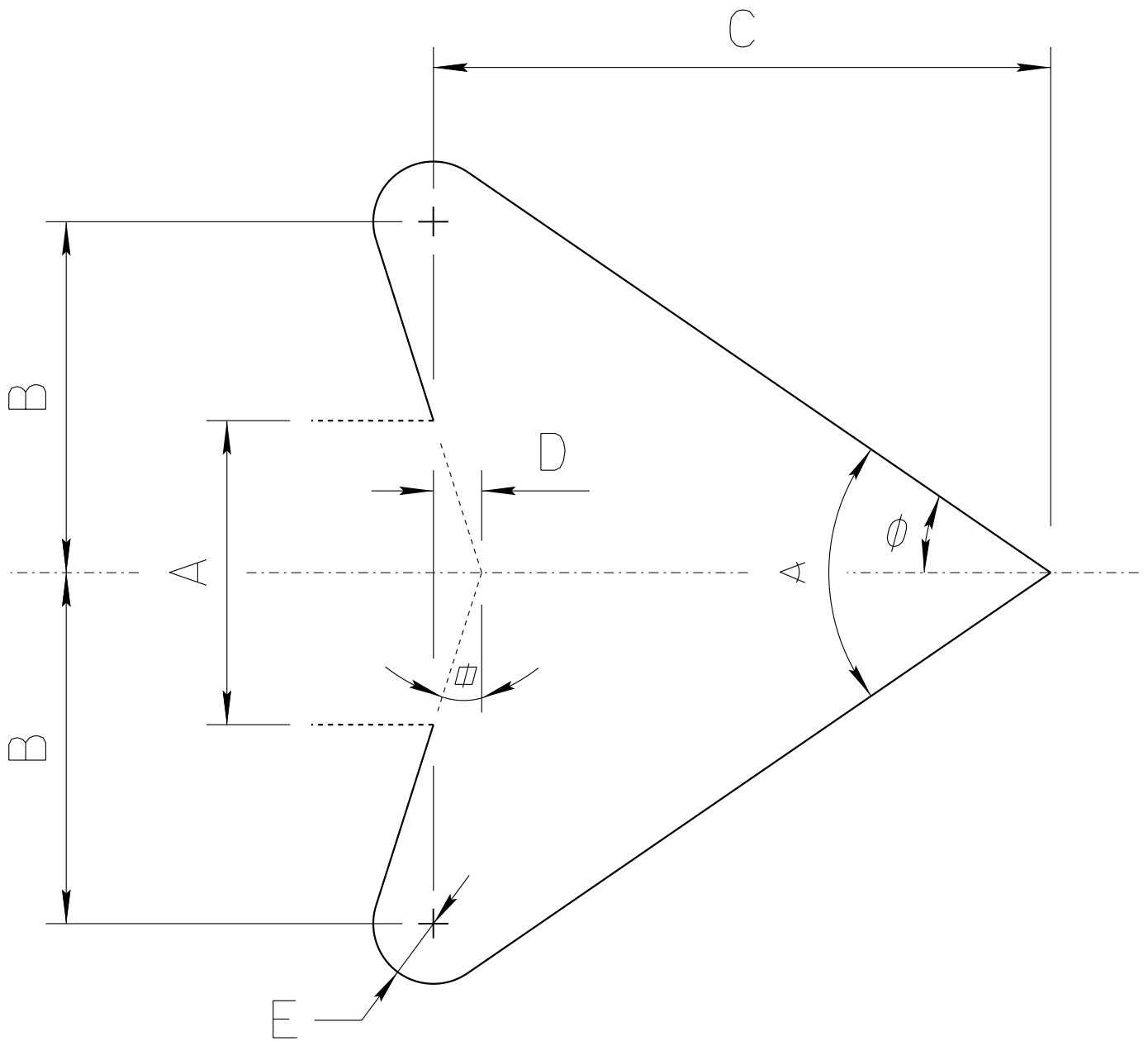
\*Reduce arrow from W24-1 20%.

**C**

A	B	C	D	E	F	G	H	J	K	L
30	.5	.75	9.206	8.246	1.601	4.723	5.524	.520	6.044	1.875
36	.625	.875	11.048	9.887	1.921	5.684	6.645	.640	7.245	2.25
48	.75	1.25	14.73	13.21	2.56	7.524	8.806	.800	9.686	3

TTC SIGN COLORS:  
 SYMBOL — BLACK  
 BACKGROUND— ORANGE (RETROREFLECTIVE)

# ADOT STANDARD ARROW HEAD DETAILS



$A =$  Arrow Shaft Stroke Width

$B = 1.15 \times A$

$C = 2.025 \times A$

$D = 0.16169 \times A$

$E = 0.2 \times A$

$\alpha = 17.92^\circ$

$\phi = 34.519^\circ$

$\alpha = 69.038^\circ$

ARIZONA DEPARTMENT OF TRANSPORTATION  
TRAFFIC ENGINEERING GROUP

DRAWN:

L. LOPEZ

DATE:

AUGUST/2019