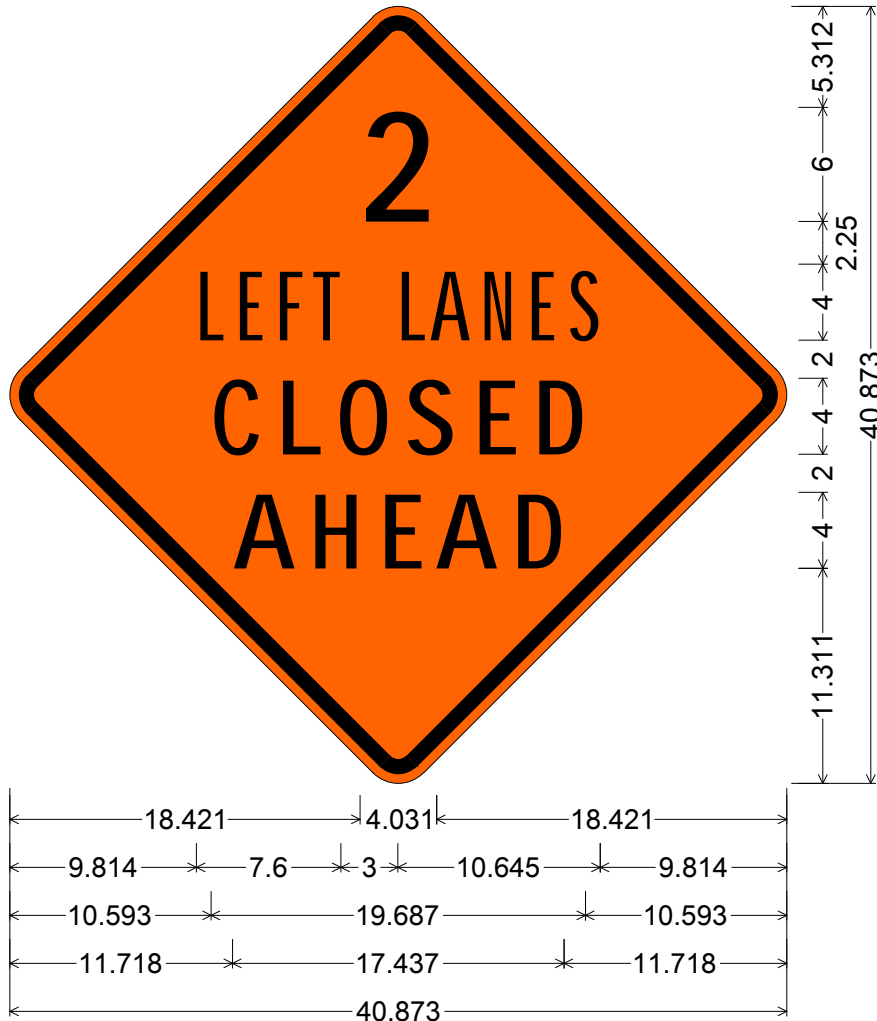


CODE: W20-5aL

SIZE: 30" x 30"
MINIMUM



W20-05aL(30x30-MIN)ORG;

30.000" across sides 1.875" Radius, 0.750" Border, 0.500" Indent, Black on Orange;
"2" D; "LEFT" B; "LANES" B; "CLOSED" D; "AHEAD" D;

ALL DIMENSIONS ARE IN INCHES



COLORS:

LEGEND & BORDER - BLACK (NON-REFL)
BACKGROUND - ORANGE (REFL)

ARIZONA DEPARTMENT OF TRANSPORTATION
TRAFFIC ENGINEERING GROUP

DRAWN:

L. LOPEZ

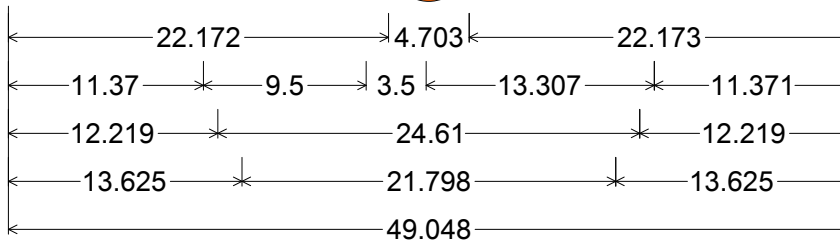
DATE:

JANUARY / 2012

APPROVED:

SIGNATURE ON FILE

CODE: W20-5aL
 SIZE: 36" x 36"
 STANDARD



W20-05aL(36x36-STD)ORG;
 36.000" across sides 2.250" Radius, 0.875" Border, 0.625" Indent, Black on Orange;
 "2" D; "LEFT" B; "LANES" B; "CLOSED" D; "AHEAD" D;

ALL DIMENSIONS ARE IN INCHES



COLORS:

LEGEND & BORDER - BLACK (NON-REFL)
 BACKGROUND - ORANGE (REFL)

ARIZONA DEPARTMENT OF TRANSPORTATION
 TRAFFIC ENGINEERING GROUP

DRAWN:

L. LOPEZ

DATE:

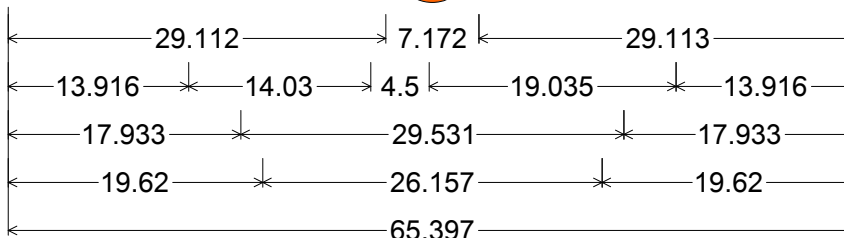
JANUARY / 2012

APPROVED:

SIGNATURE ON FILE

CODE: W20-5aL

SIZE: 48" x 48"
FREEWAY



W20-05aL(48x48-FWY)ORG;
48.000" across sides 3.000" Radius, 1.250" Border, 0.750" Indent, Black on Orange;
"2" E; "LEFT LANES" C 75% spacing; "CLOSED" D;
"AHEAD" D;

ALL DIMENSIONS ARE IN INCHES



COLORS:
LEGEND & BORDER - BLACK (NON-REFL)
BACKGROUND - ORANGE (REFL)

ARIZONA DEPARTMENT OF TRANSPORTATION
TRAFFIC ENGINEERING GROUP

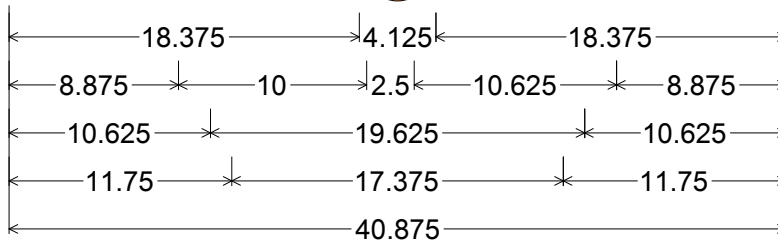
DRAWN:
L. LOPEZ

DATE:
JANUARY / 2012

APPROVED:
SIGNATURE ON FILE

CODE: W20-5aR

SIZE: 30" x 30"
MINIMUM



W20-05aR(30x30-MIN)ORG;

30.000" across sides 1.875" Radius, 0.750" Border, 0.500" Indent, Black on Orange;

"2" D; "RIGHT" B; "LANES" B; "CLOSED" D; "AHEAD" D;

ALL DIMENSIONS ARE IN INCHES



COLORS:

LEGEND & BORDER - BLACK (NON-REFL)
BACKGROUND - ORANGE (REFL)

ARIZONA DEPARTMENT OF TRANSPORTATION
TRAFFIC ENGINEERING GROUP

DRAWN:

L. LOPEZ

DATE:

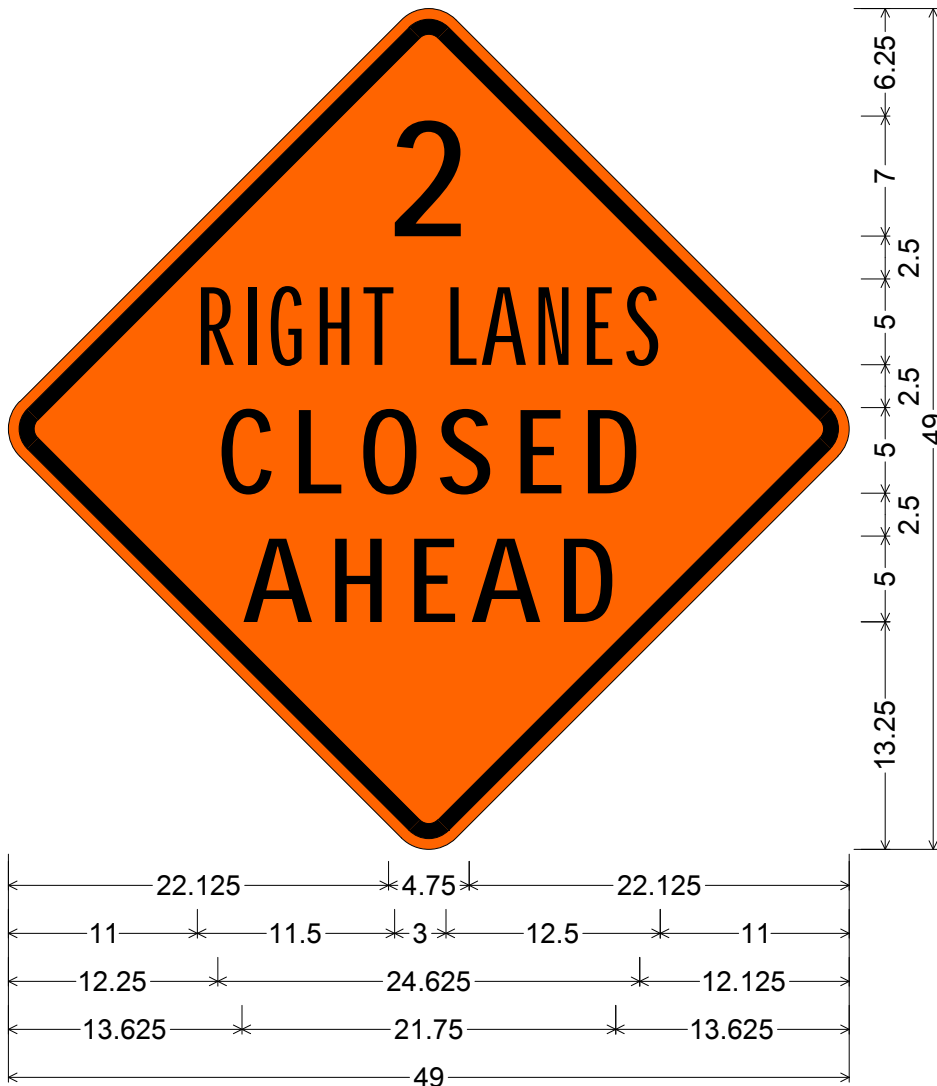
JANUARY / 2012

APPROVED:

SIGNATURE ON FILE

CODE: W20-5aR

SIZE: 36" x 36"
STANDARD



W20-05aR(36x36-STD)ORG;

36.000" across sides 2.250" Radius, 0.875" Border, 0.625" Indent, Black on Orange;

"2" D; "RIGHT" B specified length; "LANES" B specified length;

"CLOSED" D; "AHEAD" D;

ALL DIMENSIONS ARE IN INCHES



COLORS:

LEGEND & BORDER - BLACK (NON-REFL)
BACKGROUND - ORANGE (REFL)

ARIZONA DEPARTMENT OF TRANSPORTATION
TRAFFIC ENGINEERING GROUP

DRAWN:

L. LOPEZ

DATE:

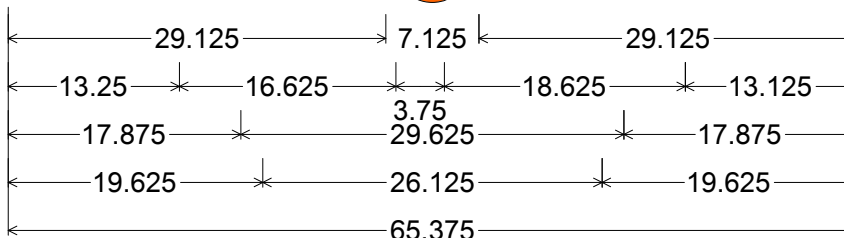
JANUARY / 2012

APPROVED:

SIGNATURE ON FILE

CODE: W20-5aR

SIZE: 48" x 48"
FREEWAY



W20-05aR(48x48-FWY)ORG;
48.000" across sides 3.000" Radius, 1.250" Border, 0.750" Indent, Black on Orange;
"2" E; "RIGHT LANES" C specified length; "CLOSED" D;
"AHEAD" D;

ALL DIMENSIONS ARE IN INCHES



COLORS:
LEGEND & BORDER - BLACK (NON-REFL)
BACKGROUND - ORANGE (REFL)

ARIZONA DEPARTMENT OF TRANSPORTATION
TRAFFIC ENGINEERING GROUP

DRAWN:
L. LOPEZ

DATE:
JANUARY / 2012

APPROVED:
SIGNATURE ON FILE