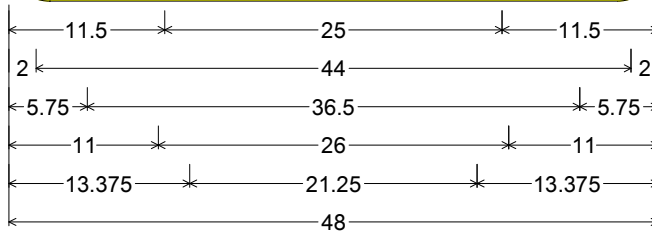
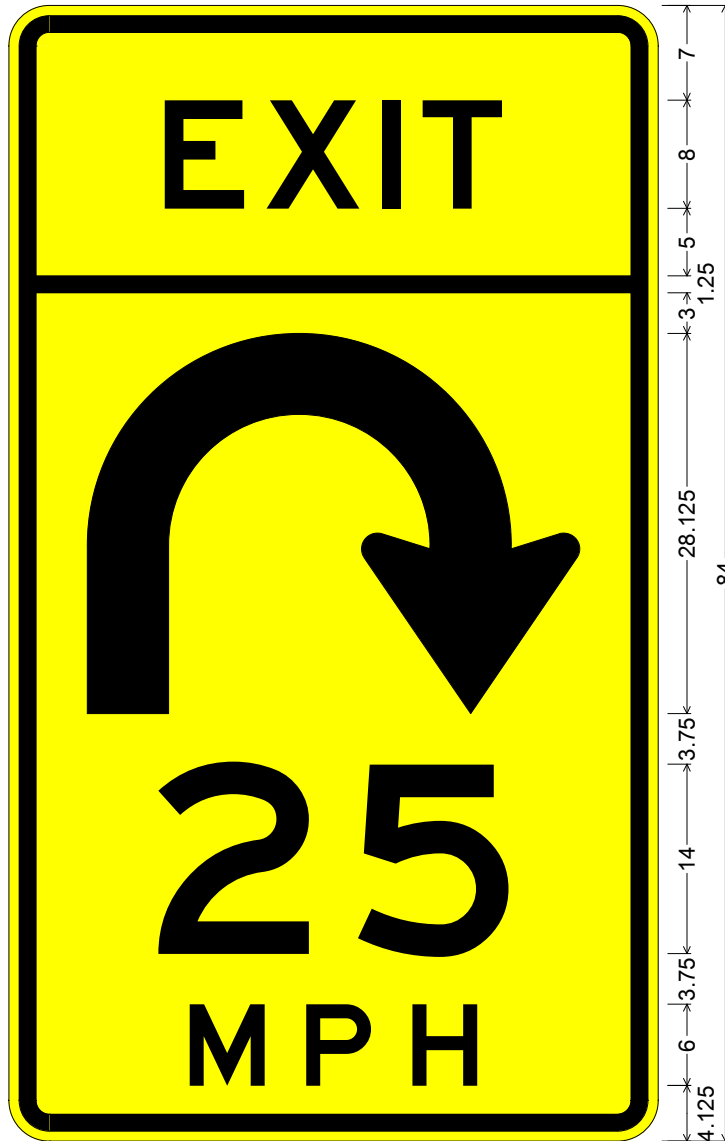


CODE: W13-6a

SIZE: 48" x 84"
FREEWAY



W13-06a(48x84-FWY)YEL;
3.000" Radius, 1.250" Border, 0.750" Indent, Black on Yellow;
"EXIT" E; (W1-11 Symbol - 6" Stroke); "25" E;
"MPH" E specified length;

ALL DIMENSIONS ARE IN INCHES



COLORS:

ARROW, LEGEND & BORDER - BLACK (NON-REFL)
BACKGROUND - YELLOW (REFL)

ARIZONA DEPARTMENT OF TRANSPORTATION
TRAFFIC ENGINEERING GROUP

DRAWN:

L. LOPEZ

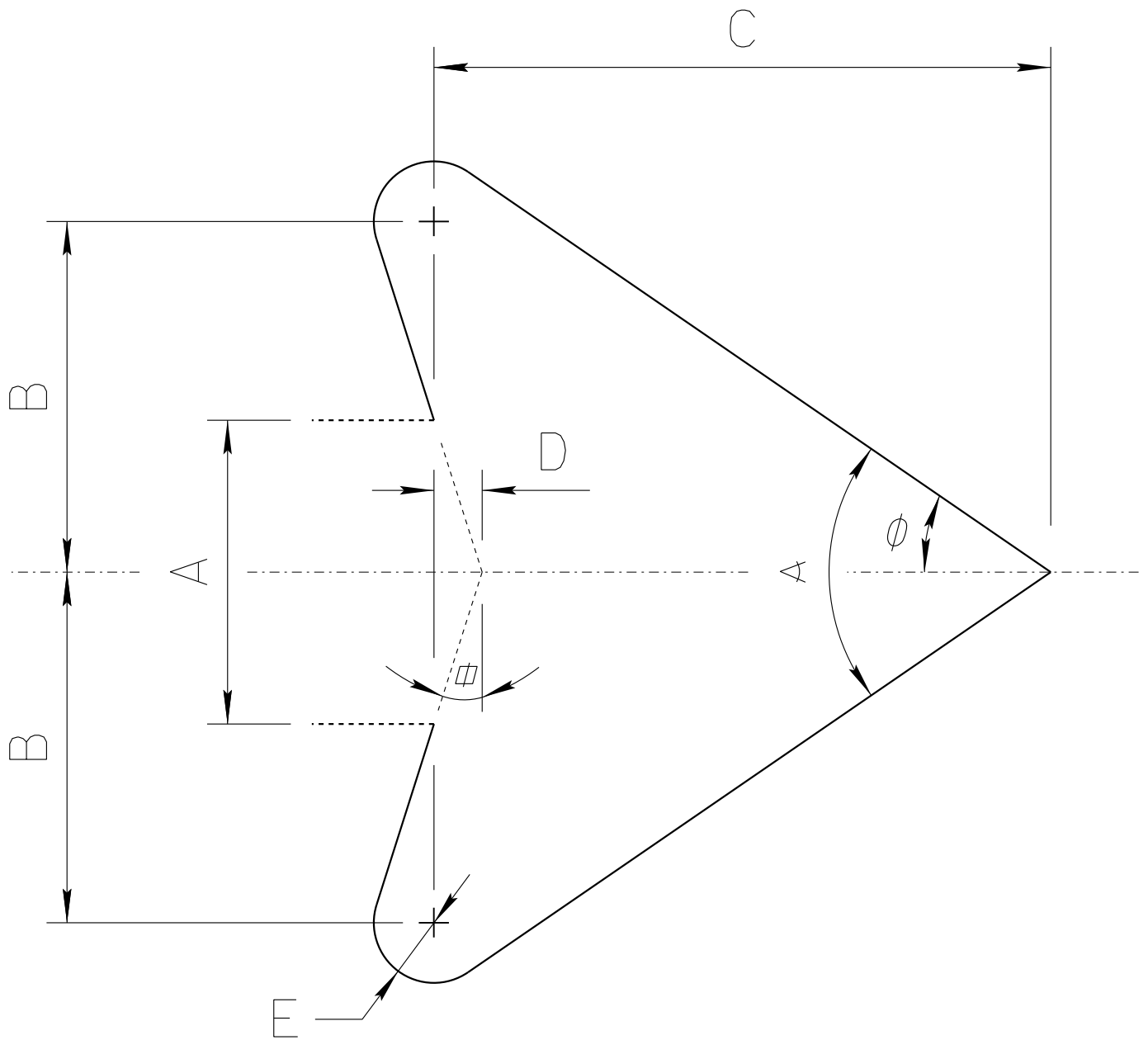
DATE:

JUNE / 2013

APPROVED:

SIGNATURE ON FILE

ADOT STANDARD ARROW HEAD DETAILS



$A =$ Arrow Shaft Stroke Width

$B = 1.15 \times A$

$C = 2.025 \times A$

$D = 0.16169 \times A$

$E = 0.2 \times A$

$\alpha = 17.92^\circ$

$\phi = 34.519^\circ$

$\alpha = 69.038^\circ$

ARIZONA DEPARTMENT OF TRANSPORTATION
TRAFFIC ENGINEERING GROUP

DRAWN:

L. LOPEZ

DATE:

AUGUST/2019