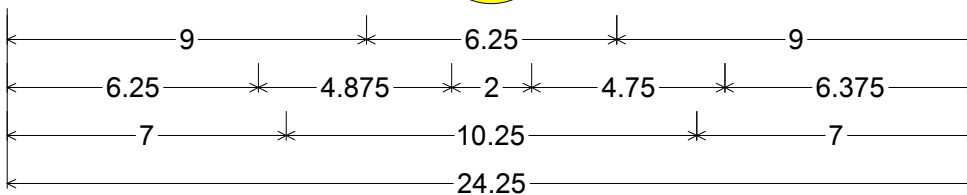


CODE: W12-101

SIZE: $\frac{18" \times 18"}{\text{MINIMUM}}$



W12-101(18x18-MIN)YEL;

18.000" across sides 1.500" Radius, 0.625" Border, 0.375" Indent, Black on Yellow;

"THRU" B 85% spacing; Standard Arrow Custom 6.750" X 4.125" 231°;

Standard Arrow Custom 6.750" X 4.125" 309°;

"TRAFFIC" B 85% spacing;

ALL DIMENSIONS ARE IN INCHES



COLORS:

ARROWS, LEGEND & BORDER - BLACK (NON-REFL)
BACKGROUND - YELLOW (REFL)

ARIZONA DEPARTMENT OF TRANSPORTATION
TRAFFIC ENGINEERING GROUP

DRAWN:

L. LOPEZ

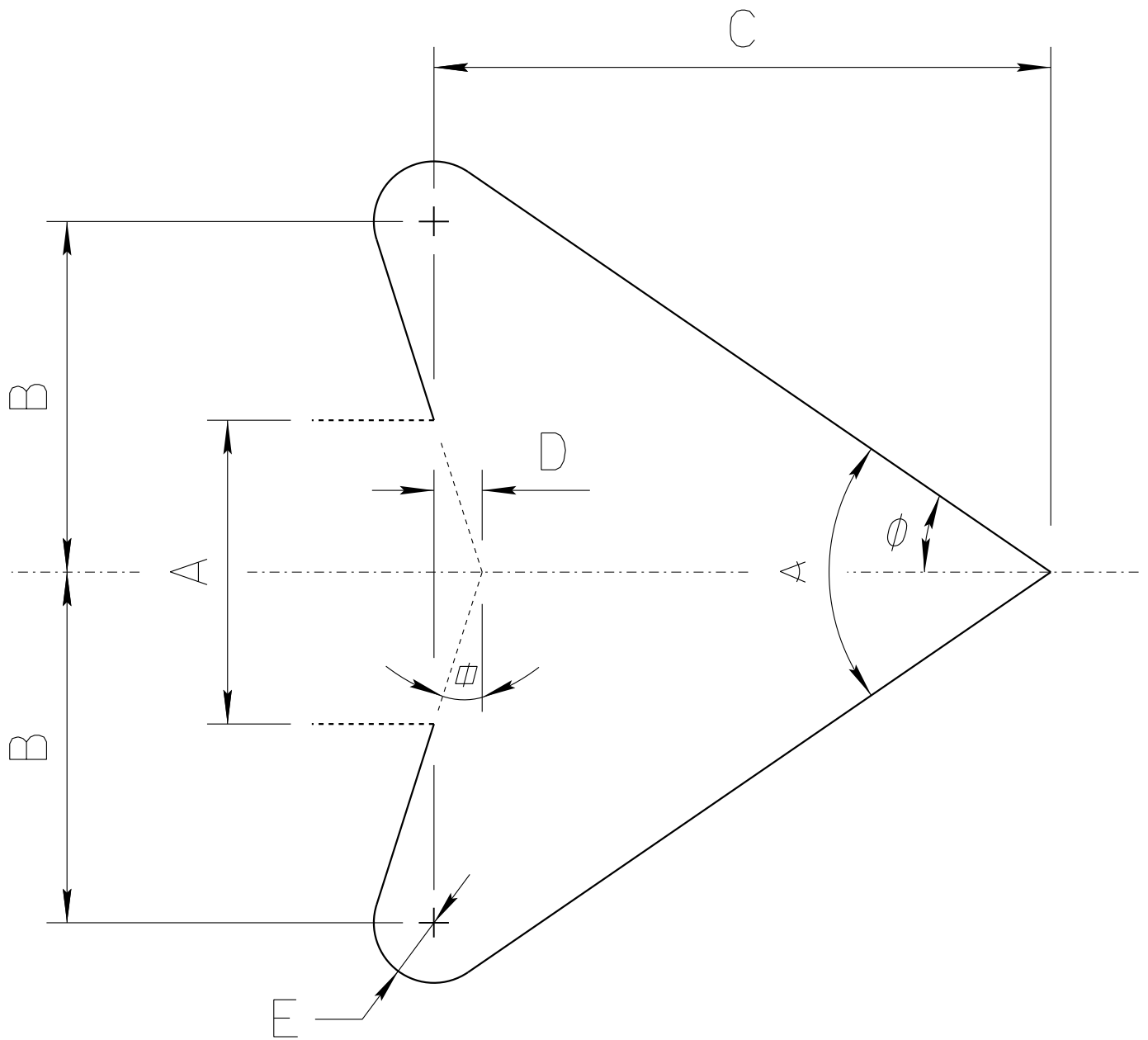
DATE:

JUNE / 2013

APPROVED:

SIGNATURE ON FILE

ADOT STANDARD ARROW HEAD DETAILS



$A =$ Arrow Shaft Stroke Width

$B = 1.15 \times A$

$C = 2.025 \times A$

$D = 0.16169 \times A$

$E = 0.2 \times A$

$\alpha = 17.92^\circ$

$\phi = 34.519^\circ$

$\alpha = 69.038^\circ$

ARIZONA DEPARTMENT OF TRANSPORTATION
TRAFFIC ENGINEERING GROUP

DRAWN:

L. LOPEZ

DATE:

AUGUST/2019