

W1-6R

ONE DIRECTION LARGE ARROW



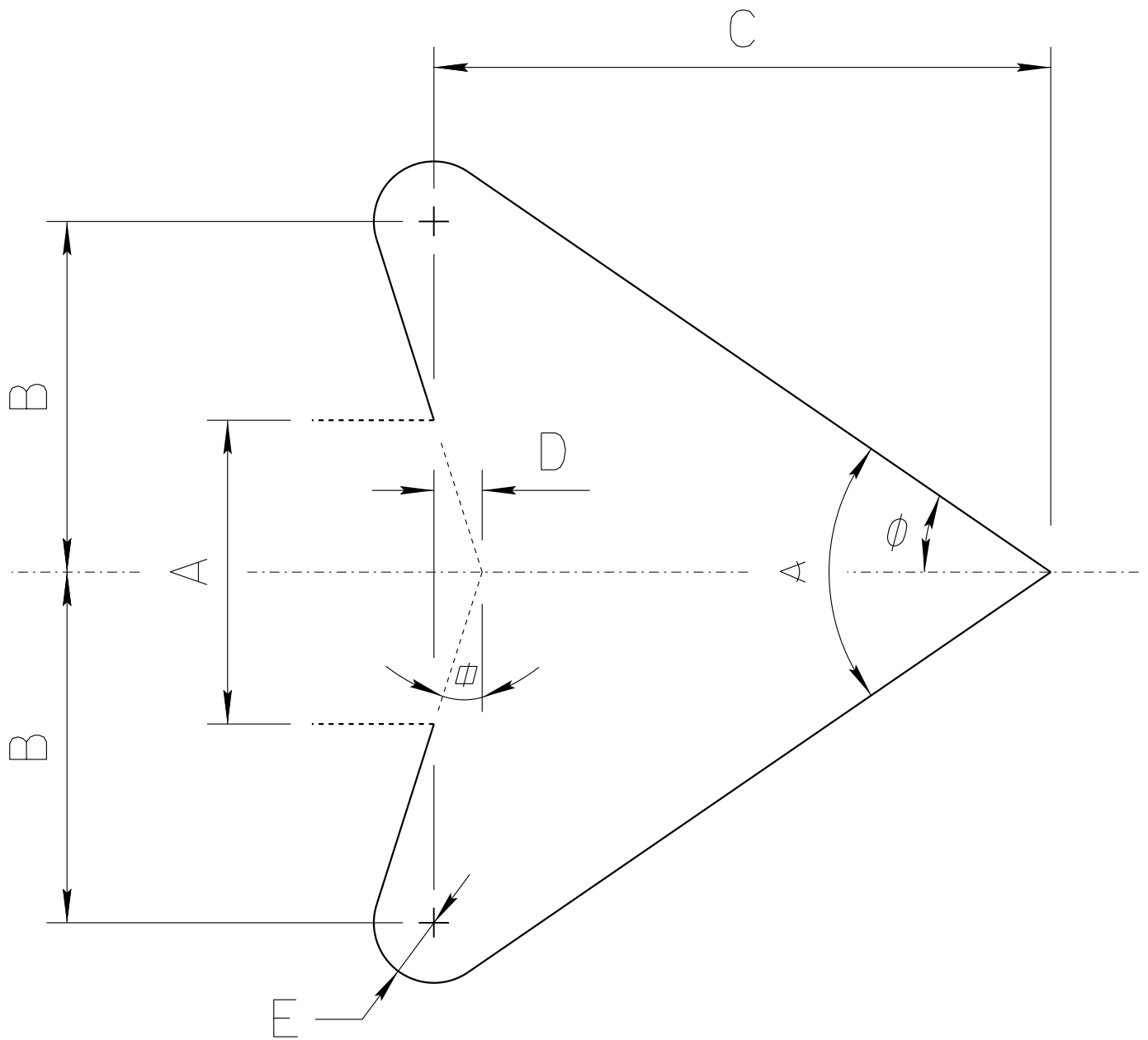
W1-6L

| A | B | C | D | E | F | G |
|----|----|------|------|--------|------|-------|
| 24 | 12 | .375 | .625 | 9.625 | 3.25 | 1.5 |
| 36 | 18 | .375 | .625 | 14.625 | 5 | 1.5 |
| 48 | 24 | .5 | .75 | 19.5 | 6.5 | 1.875 |
| 60 | 30 | .625 | .875 | 24.375 | 8 | 2.25 |
| 96 | 48 | .75 | 1.25 | 39 | 13 | 3 |

WARNING SIGN
 COLORS: LEGEND, BORDER — BLACK
 BACKGROUND — YELLOW (RETROREFLECTIVE)

TTC SIGN
 COLORS: LEGEND, BORDER — BLACK
 BACKGROUND — ORANGE (RETROREFLECTIVE)

ADOT STANDARD ARROW HEAD DETAILS



$A =$ Arrow Shaft Stroke Width

$B = 1.15 \times A$

$C = 2.025 \times A$

$D = 0.16169 \times A$

$E = 0.2 \times A$

$\alpha = 17.92^\circ$

$\phi = 34.519^\circ$

$\angle = 69.038^\circ$

ARIZONA DEPARTMENT OF TRANSPORTATION
TRAFFIC ENGINEERING GROUP

DRAWN:

L. LOPEZ

DATE:

AUGUST/2019