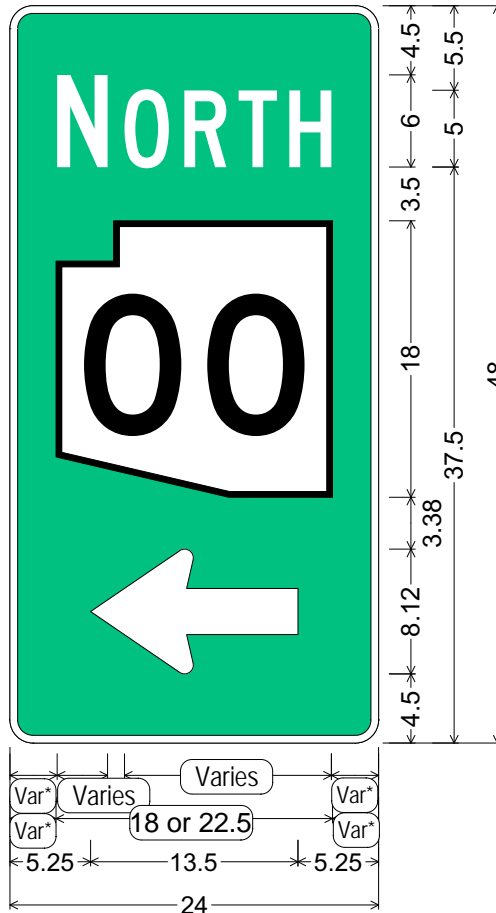


*Center all legend horizontally on panel.

CODE: M102-1
 SIZE: 24" x 48"
 STANDARD

Use M102-1 for one route with one cardinal direction.



M102-1;
 1.50" Radius, 0.50" Border, White on Green;
 "NORTH" C 95% spacing;
 State Highway 00 M1-5c;
 Arrow 6" Type D2 - 13.50" 180°;

ALL DIMENSIONS ARE IN INCHES



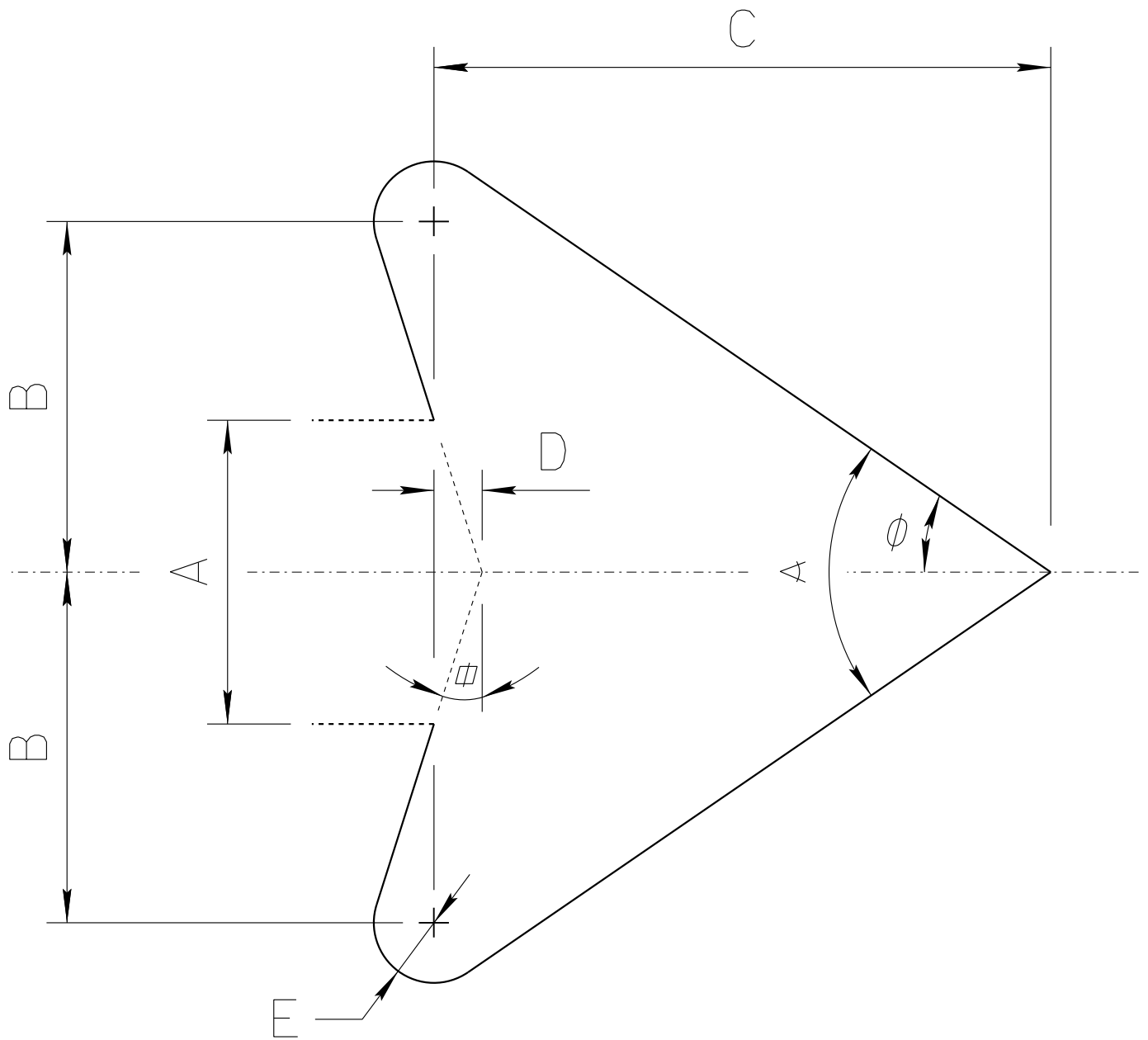
COLORS:
 LEGEND & BORDER - WHITE (REFL)
 BACKGROUND - GREEN (REFL)

ARIZONA DEPARTMENT OF TRANSPORTATION
 TRAFFIC ENGINEERING GROUP

DRAWN: R. C. MOEUR	DATE: DECEMBER / 2015
-----------------------	--------------------------

APPROVED:
 SIGNATURE ON FILE

ADOT STANDARD ARROW HEAD DETAILS



$A = \text{Arrow Shaft Stroke Width}$

$B = 1.15 \times A$

$C = 2.025 \times A$

$D = 0.16169 \times A$

$E = 0.2 \times A$

$\phi = 17.92^\circ$

$\alpha = 34.519^\circ$

$\sphericalangle = 69.038^\circ$

ARIZONA DEPARTMENT OF TRANSPORTATION
TRAFFIC ENGINEERING GROUP

DRAWN:

L. LOPEZ

DATE:

AUGUST/2019