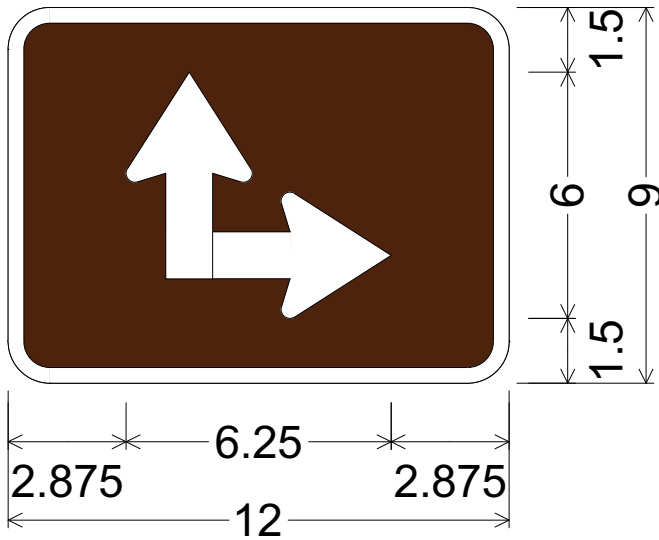
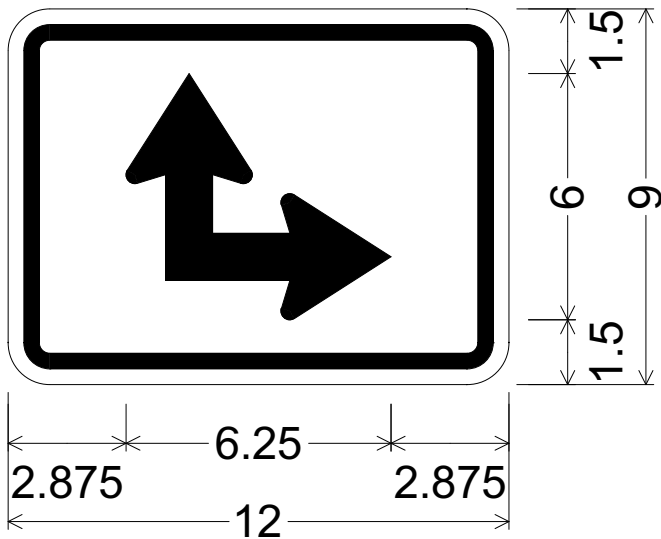


CODE: M6-6
 SIZE: 12" x 9"
 MINIMUM



M06-06(12x9-MIN)BRN;
 1.000" Radius, 0.375" Border, White on Brown;
 Special Arrows 90°, 1.125" Stoke;



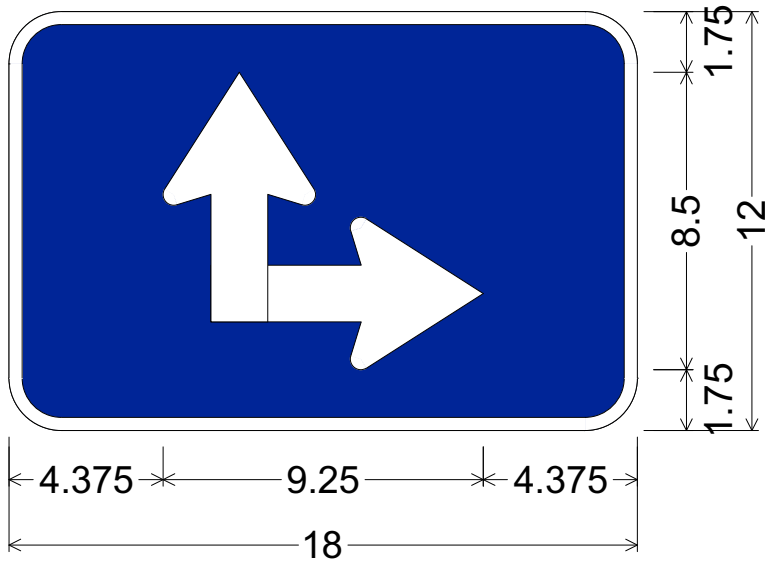
M06-06(12x9-MIN)WHT;
 1.000" Radius, 0.375" Border, 0.375" Indent, Black on White;
 Special Arrows 90°, 1.125" Stoke;

Colors:
 Arrow & Border: White (Reflective), Black (Non-Reflective)
 Background: Blue, Brown, Green, Orange or White (Reflective)

All dimensions are in inches

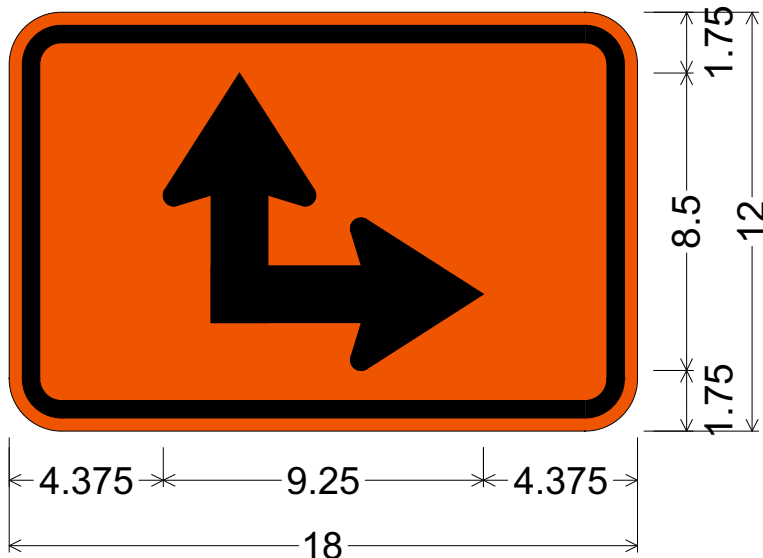
Designed By: L. LOPEZ

Issue Date: August 2023



CODE: M6-6
 SIZE: 18" x 12"
 STANDARD

M06-06(18x12-STD)BLU;
 1.500" Radius, 0.375" Border, White on Blue;
 Special Arrows 90°, 1.625" Stoke;



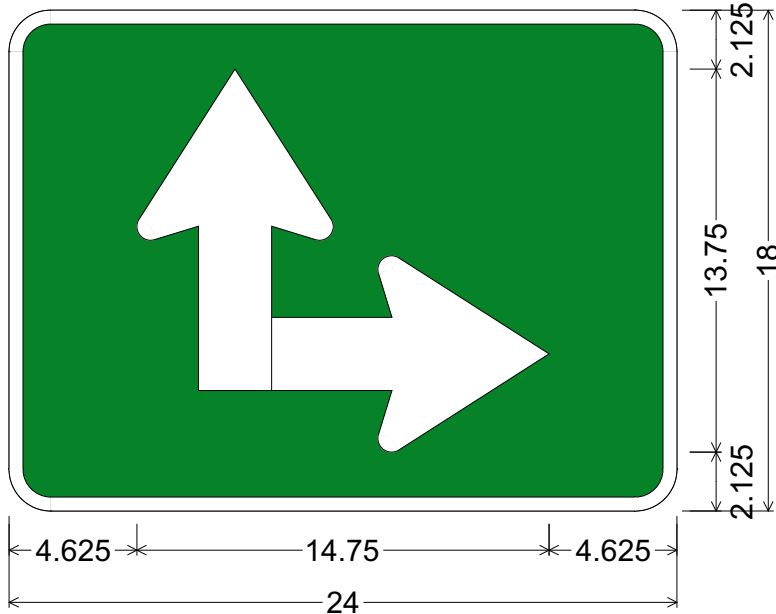
M06-06(18x12-STD)ORG;
 1.500" Radius, 0.500" Border, 0.375" Indent, Black on Orange;
 Special Arrows 90°, 1.625" Stoke;

Colors:
 Arrow & Border: White (Reflective), Black (Non-Reflective)
 Background: Blue, Brown, Green, Orange or White (Reflective)

All dimensions are in inches

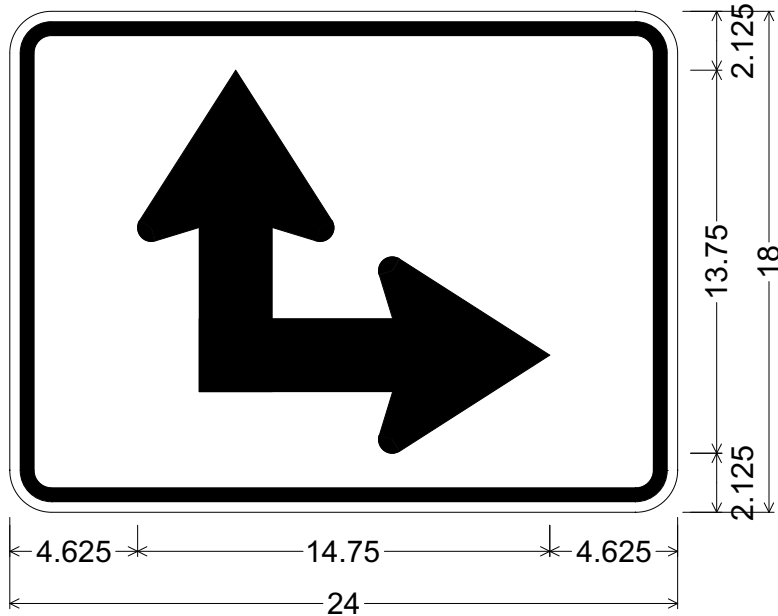
Designed By: L. LOPEZ

Issue Date: August 2023



CODE: M6-6
 SIZE: 24" x 18"
 FREEWAY

M06-06(24x18-FWY)GRN;
 1.500" Radius, 0.500" Border, White on Green;
 Special Arrows 90°, 2.625" Stoke;



M06-06(24x18-FWY)WHT;
 1.500" Radius, 0.500" Border, 0.375" Indent, Black on White;
 Special Arrows 90°, 2.625" Stoke;

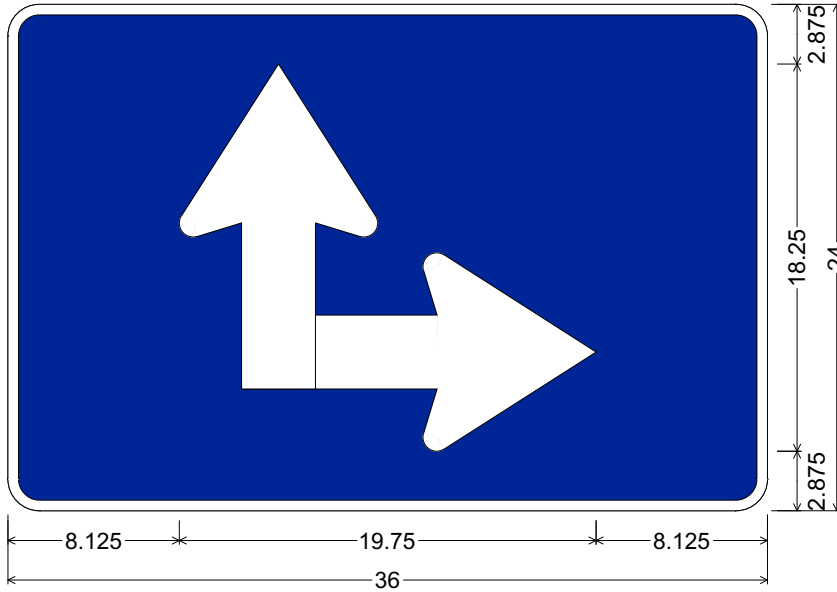
Colors:
 Arrow & Border: White (Reflective), Black (Non-Reflective)
 Background: Blue, Brown, Green, Orange or White (Reflective)

All dimensions are in inches

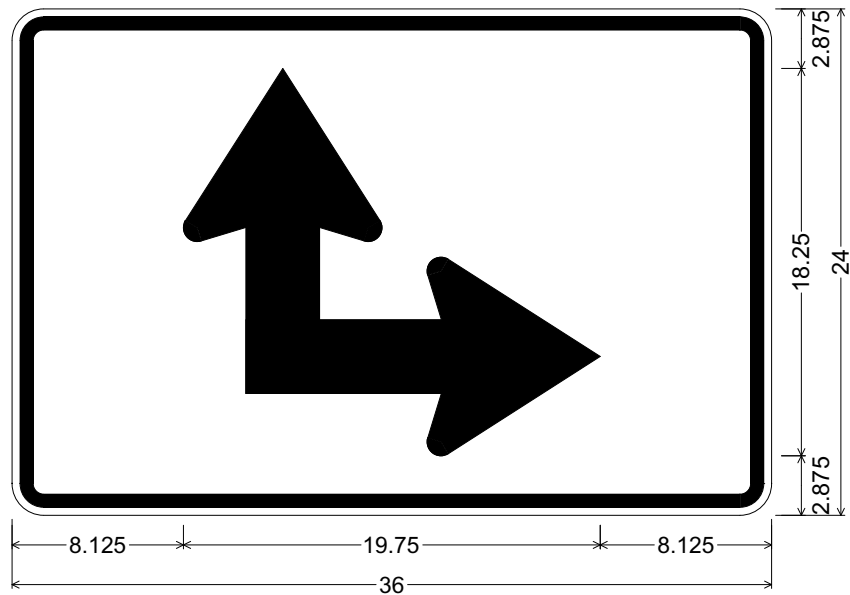
Designed By: L. LOPEZ

Issue Date: August 2023

CODE: M6-6
 SIZE: 36" x 24"
 SPECIAL



M06-06(36x24-SPCL)BLU;
 1.500" Radius, 0.500" Border, White on Blue;
 Special Arrows 90°, 3.5" Stoke;



M06-06(36x24-SPCL)WHT;
 1.500" Radius, 0.625" Border, 0.375" Indent, Black on White;
 Special Arrows 90°, 3.5" Stoke;

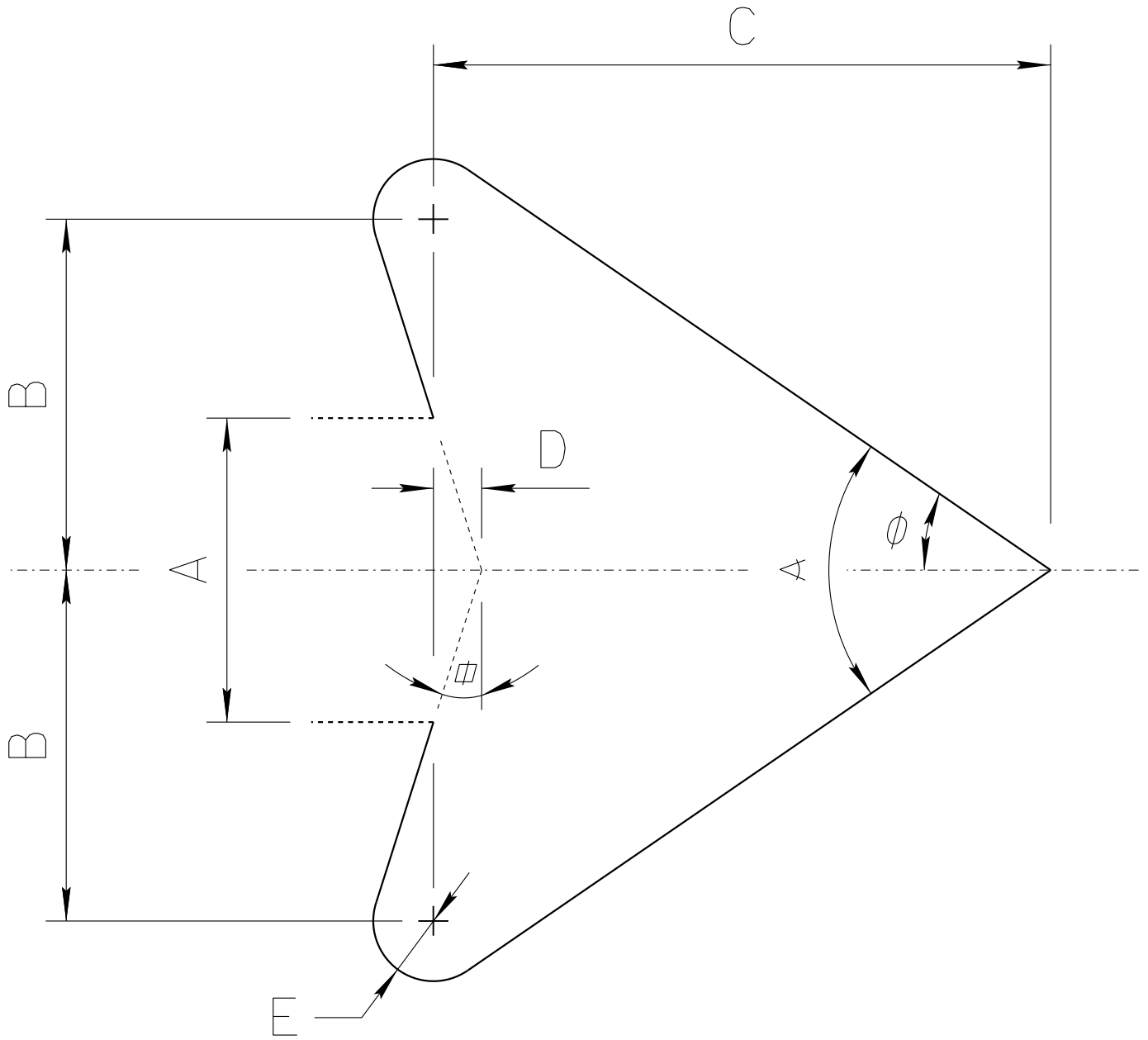
Colors:
 Arrow & Border: White (Reflective), Black (Non-Reflective)
 Background: Blue, Brown, Green, Orange or White (Reflective)

All dimensions are in inches

Designed By: L. LOPEZ

Issue Date: August 2023

ADOT STANDARD ARROW HEAD DETAILS



$A = \text{Arrow Shaft Stroke Width}$

$B = 1.15 \times A$

$C = 2.025 \times A$

$D = 0.16169 \times A$

$E = 0.2 \times A$

$\alpha = 17.92^\circ$

$\phi = 34.519^\circ$

$\alpha = 69.038^\circ$

ARIZONA DEPARTMENT OF TRANSPORTATION
TRAFFIC ENGINEERING GROUP

DRAWN:

L. LOPEZ

DATE:

AUGUST/2019