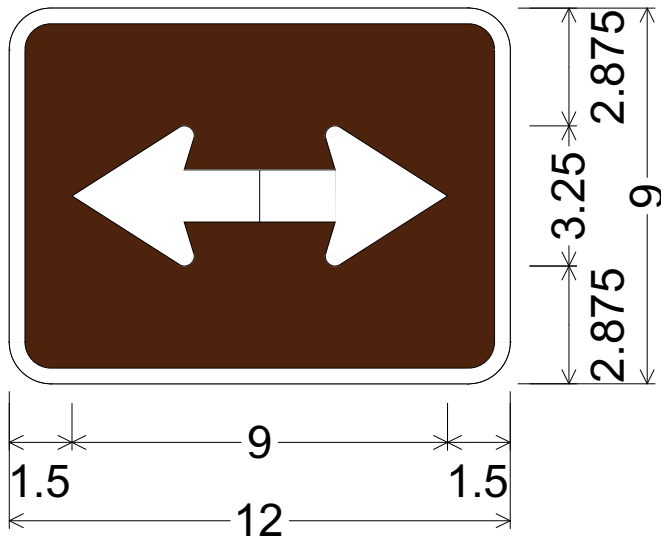
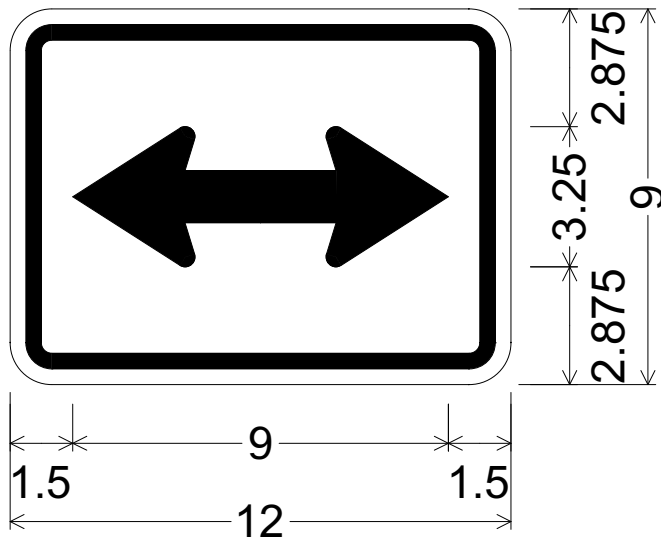


CODE: M6-4
 SIZE: 12" x 9"
 MINIMUM



M06-04(12x9-MIN)BRN;
 1.000" Radius, 0.375" Border, White on Brown;
 Standard Arrows, 1.25" Stroke;



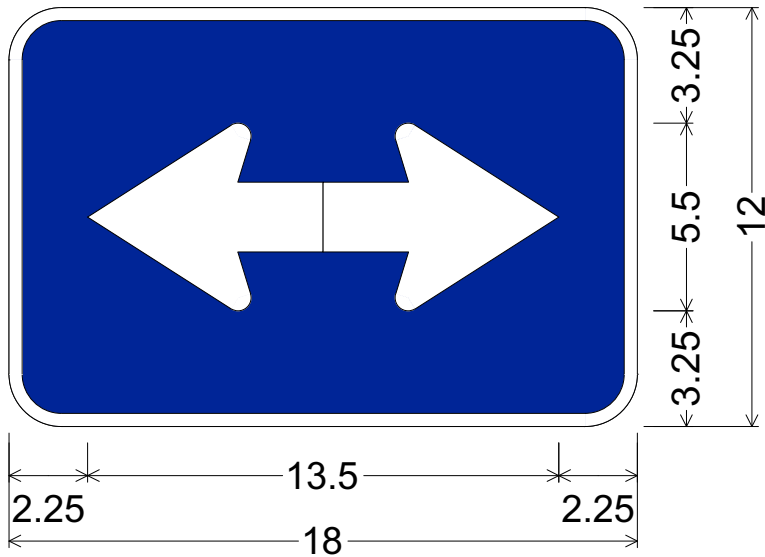
M06-04(12x9-MIN)WHT;
 1.000" Radius, 0.375" Border, 0.375" Indent, Black on White;
 Standard Arrows, 1.25" Stroke;

Colors:
 Arrow & Border: White (Reflective), Black (Non-Reflective)
 Background: Blue, Brown, Green, Orange or White (Reflective)

All dimensions are in inches

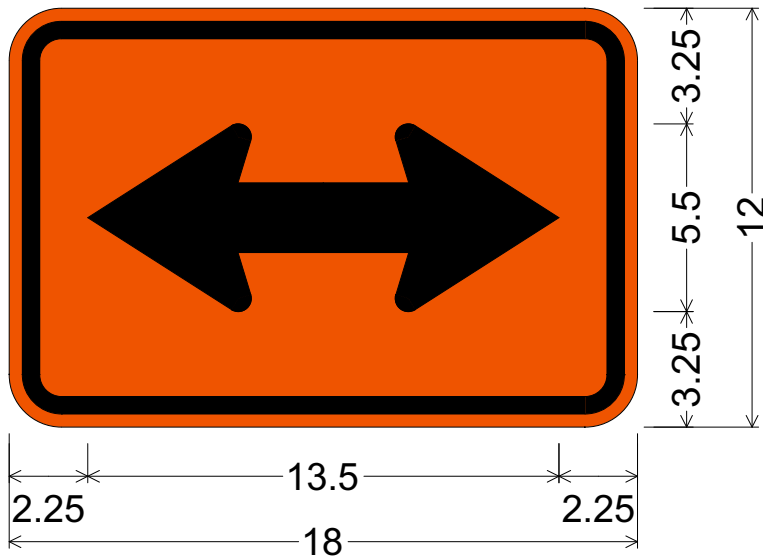
Designed By: L. LOPEZ

Issue Date: August 2023



CODE: M6-4
 SIZE: 18" x 12"
 STANDARD

M06-04(18x12-STD)BLU;
 1.500" Radius, 0.375" Border, White on Blue;
 Standard Arrows, 2" Stroke;



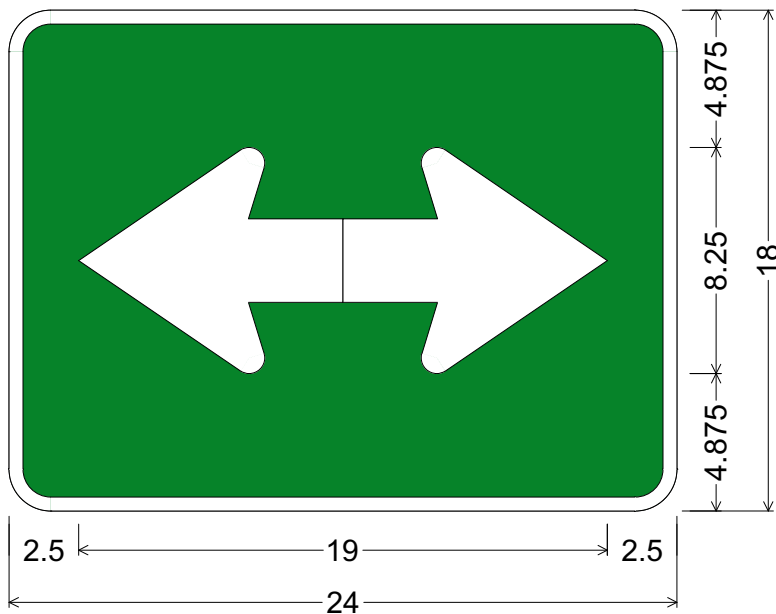
M06-04(18x12-STD)ORG;
 1.500" Radius, 0.500" Border, 0.375" Indent, Black on Orange;
 Standard Arrows, 2" Stroke;

Colors:
 Arrow & Border: White (Reflective), Black (Non-Reflective)
 Background: Blue, Brown, Green, Orange or White (Reflective)

All dimensions are in inches

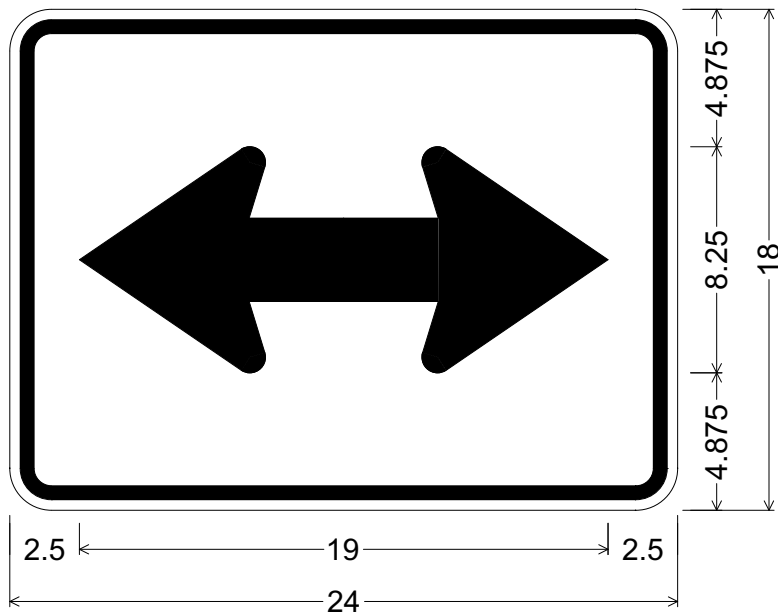
Designed By: L. LOPEZ

Issue Date: August 2023



CODE: M6-4
 SIZE: 24" x 18"
 FREEWAY

M06-04(24x18-FWY)GRN;
 1.500" Radius, 0.500" Border, White on Green;
 Standard Arrows, 3" Stroke;



M06-04(24x18-FWY)WHT;
 1.500" Radius, 0.500" Border, 0.375" Indent, Black on White;
 Standard Arrows, 3" Stroke;

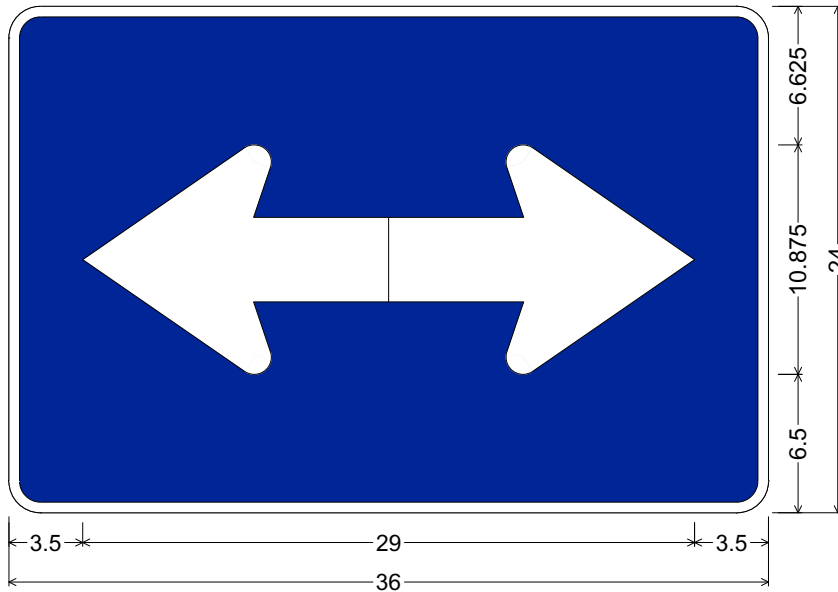
Colors:
 Arrow & Border: White (Reflective), Black (Non-Reflective)
 Background: Blue, Brown, Green, Orange or White (Reflective)

All dimensions are in inches

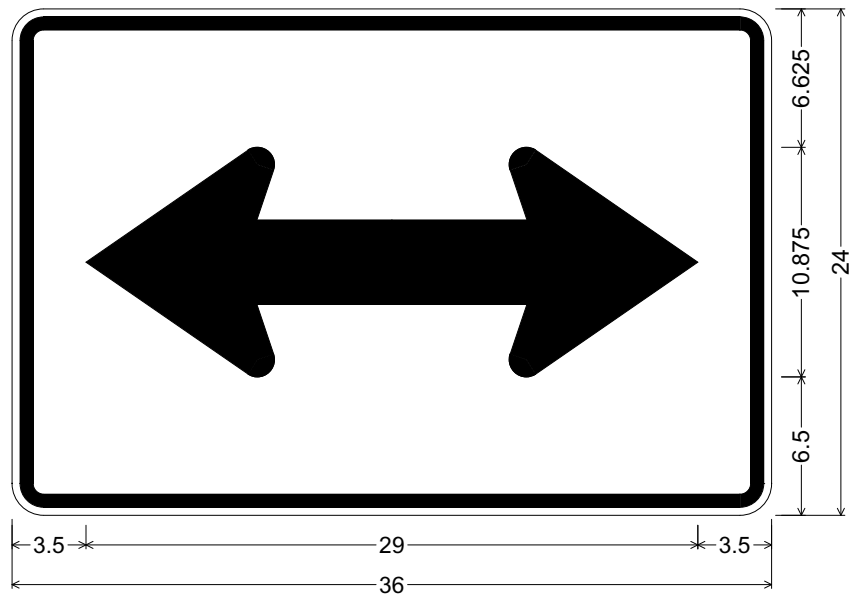
Designed By: L. LOPEZ

Issue Date: August 2023

CODE: M6-4
SIZE: 36" x 24"
 SPECIAL



M06-04(36x24-SPCL)BLU;
 1.500" Radius, 0.500" Border, White on Blue;
 Standard Arrows, 4" Stroke;



M06-04(36x24-SPCL)WHT;
 1.500" Radius, 0.625" Border, 0.375" Indent, Black on White;
 Standard Arrows, 4" Stroke;

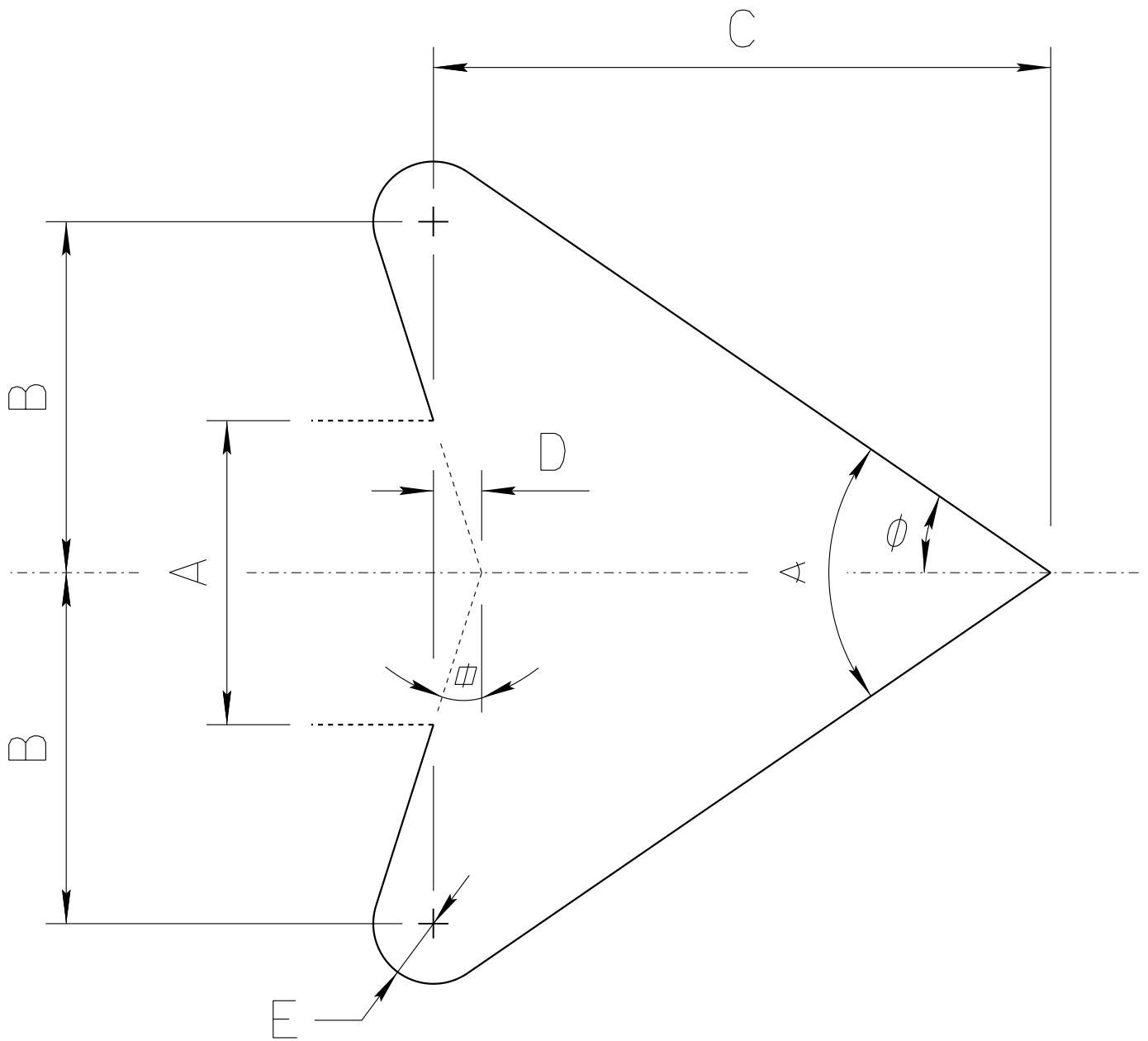
Colors:
 Arrow & Border: White (Reflective), Black (Non-Reflective)
 Background: Blue, Brown, Green, Orange or White (Reflective)

All dimensions are in inches

Designed By: L. LOPEZ

Issue Date: August 2023

ADOT STANDARD ARROW HEAD DETAILS



A = Arrow Shaft Stroke Width

B = $1.15 \times A$

C = $2.025 \times A$

D = $0.16169 \times A$

E = $0.2 \times A$

α = 17.92°

ϕ = 34.519°

\angle = 69.038°

ARIZONA DEPARTMENT OF TRANSPORTATION
TRAFFIC ENGINEERING GROUP

DRAWN:

L. LOPEZ

DATE:

AUGUST/2019