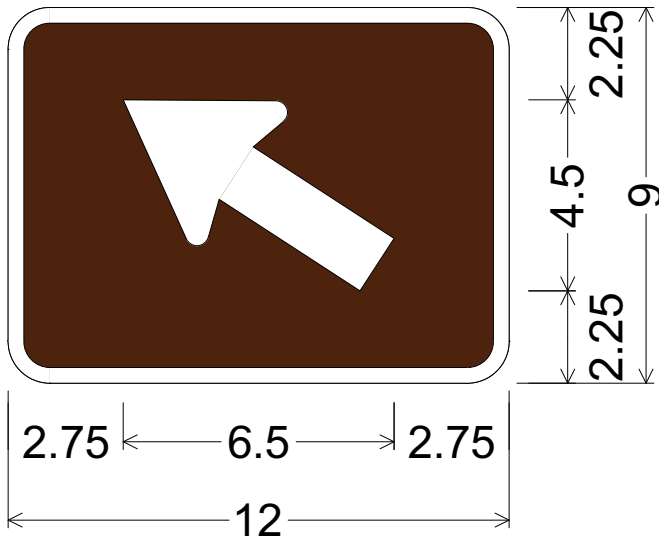
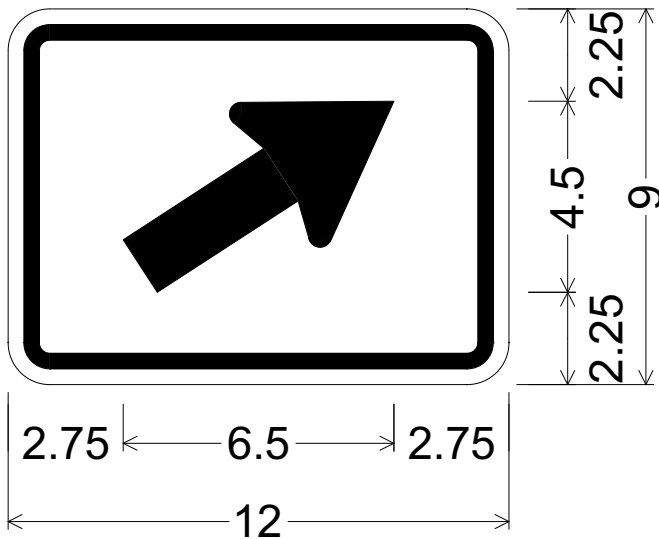


CODE: M6-2(L/R)  
 SIZE: 12" x 9"  
 MINIMUM



M06-02L(12x9-MIN)BRN;  
 1.000" Radius, 0.375" Border, White on Brown;  
 Standard Arrow 147°, 1.5" Stroke;



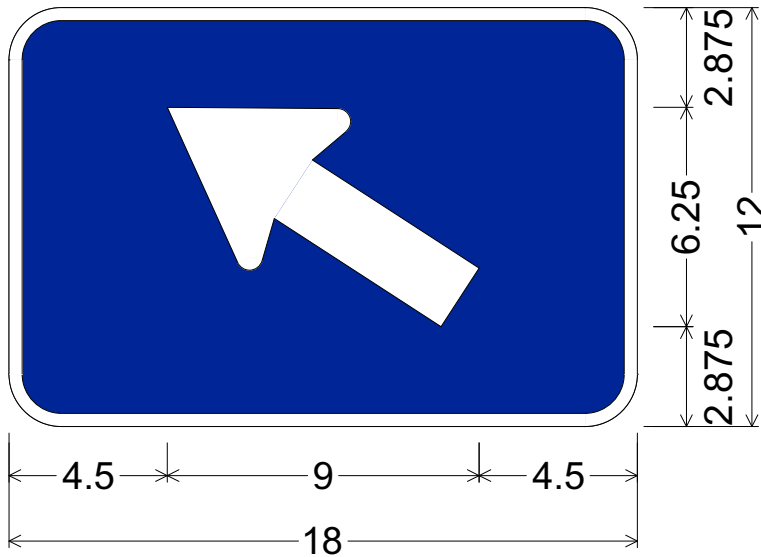
M06-02R(12x9-MIN)WHT;  
 1.000" Radius, 0.375" Border, 0.375" Indent, Black on White;  
 Standard Arrow 33°, 1.5" Stroke;

**Colors:**  
 Arrow & Border: White (Reflective), Black (Non-Reflective)  
 Background: Blue, Brown, Green, Orange or White (Reflective)

All dimensions are in inches

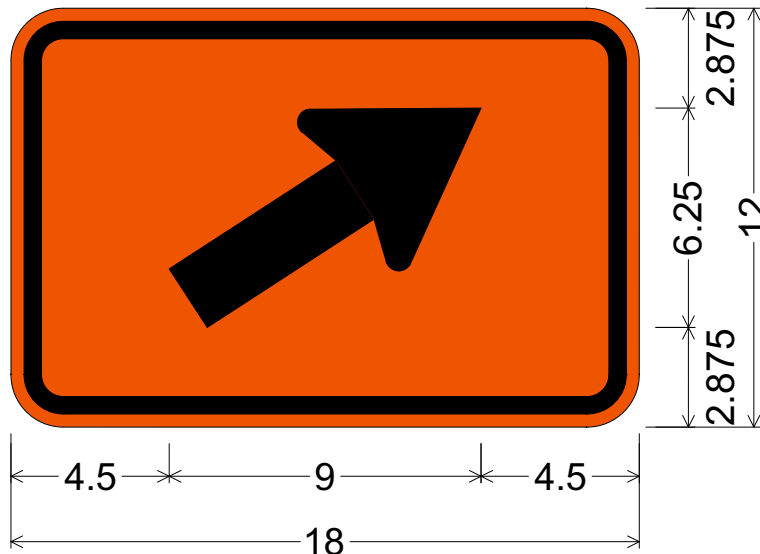
Designed By: L. LOPEZ

Issue Date: August 2023



CODE: M6-2(L/R)  
 SIZE: 18" x 12"  
 STANDARD

M06-02L(18x12-STD)BLU;  
 1.500" Radius, 0.375" Border, White on Blue;  
 Standard Arrow 147°, 2" Stroke;



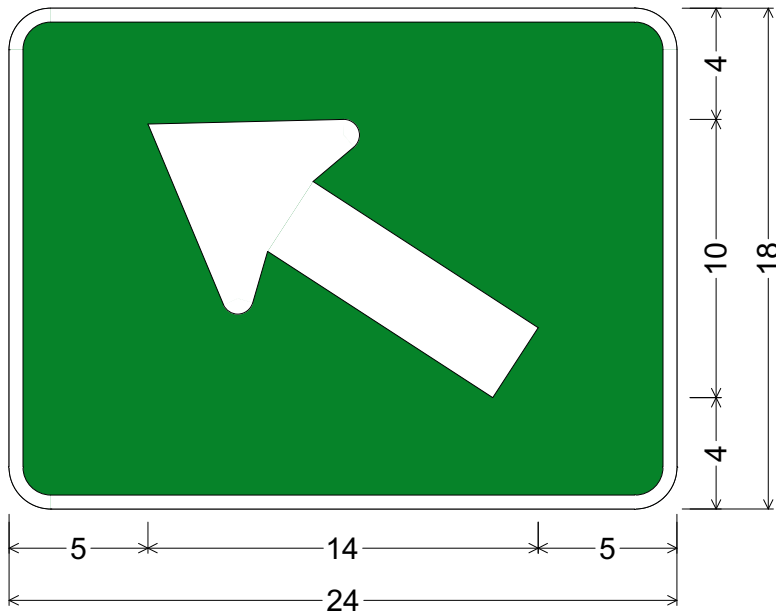
M06-02R(18x12-STD)ORG;  
 1.500" Radius, 0.500" Border, 0.375" Indent, Black on Orange;  
 Standard Arrow 33°, 2" Stroke;

**Colors:**  
 Arrow & Border: White (Reflective), Black (Non-Reflective)  
 Background: Blue, Brown, Green, Orange or White (Reflective)

All dimensions are in inches

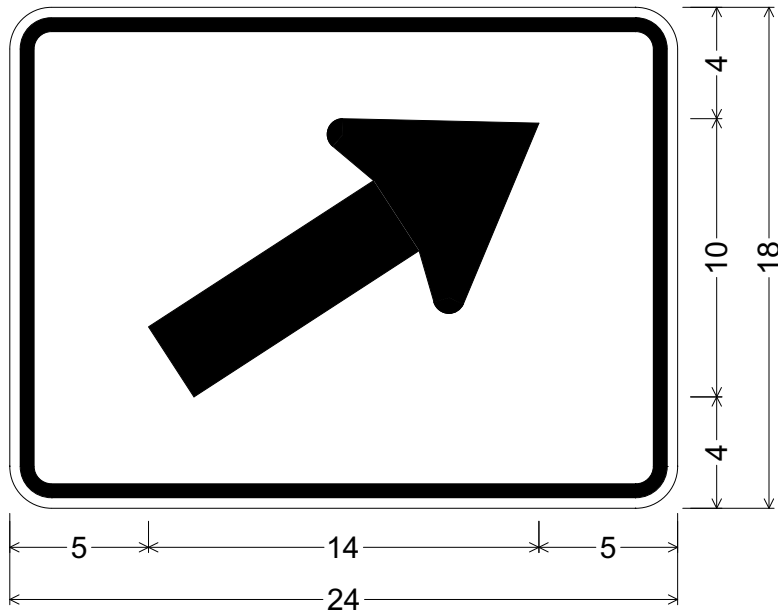
Designed By: L. LOPEZ

Issue Date: August 2023



CODE: M6-2(L/R)  
 SIZE: 24" x 18"  
 FREEWAY

M06-02L(24x18-FWY)GRN;  
 1.500" Radius, 0.500" Border, White on Green;  
 Standard Arrow 147°, 3" Stroke;



M06-02R(24x18-FWY)WHT;  
 1.500" Radius, 0.500" Border, 0.375" Indent, Black on White;  
 Standard Arrow 33°, 3" Stroke;

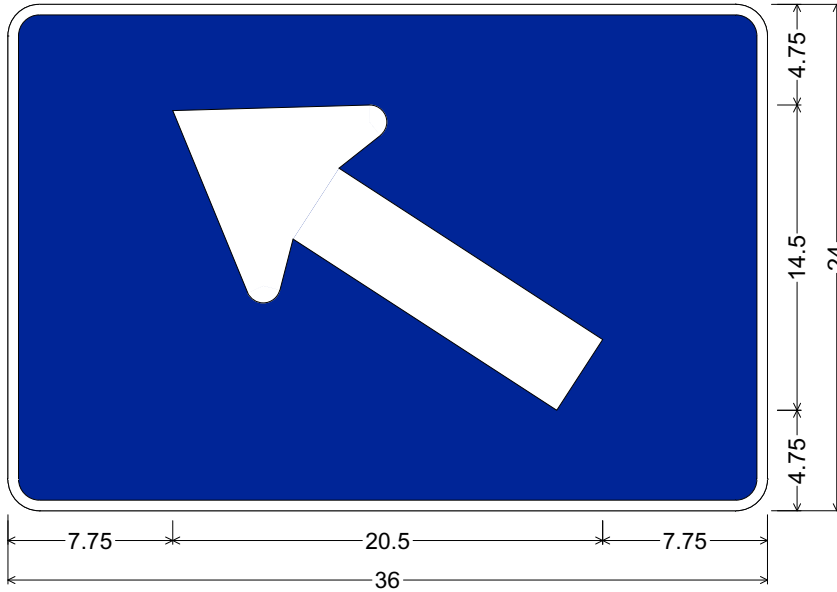
**Colors:**  
 Arrow & Border: White (Reflective), Black (Non-Reflective)  
 Background: Blue, Brown, Green, Orange or White (Reflective)

All dimensions are in inches

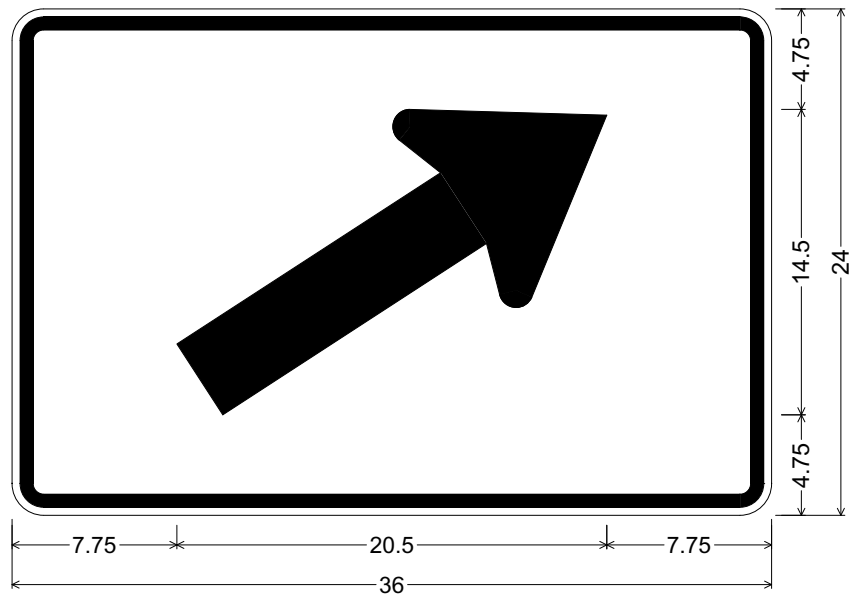
Designed By: L. LOPEZ

Issue Date: August 2023

CODE: M6-2(L/R)  
 SIZE: 36" x 24"  
 SPECIAL



M06-02L(36x24-SPCL)BLU;  
 1.500" Radius, 0.500" Border, White on Blue;  
 Standard Arrow 147°, 4" Stroke;



M06-02R(36x24-SPCL)WHT;  
 1.500" Radius, 0.625" Border, 0.375" Indent, Black on White;  
 Standard Arrow 33°, 4" Stroke;

**Colors:**

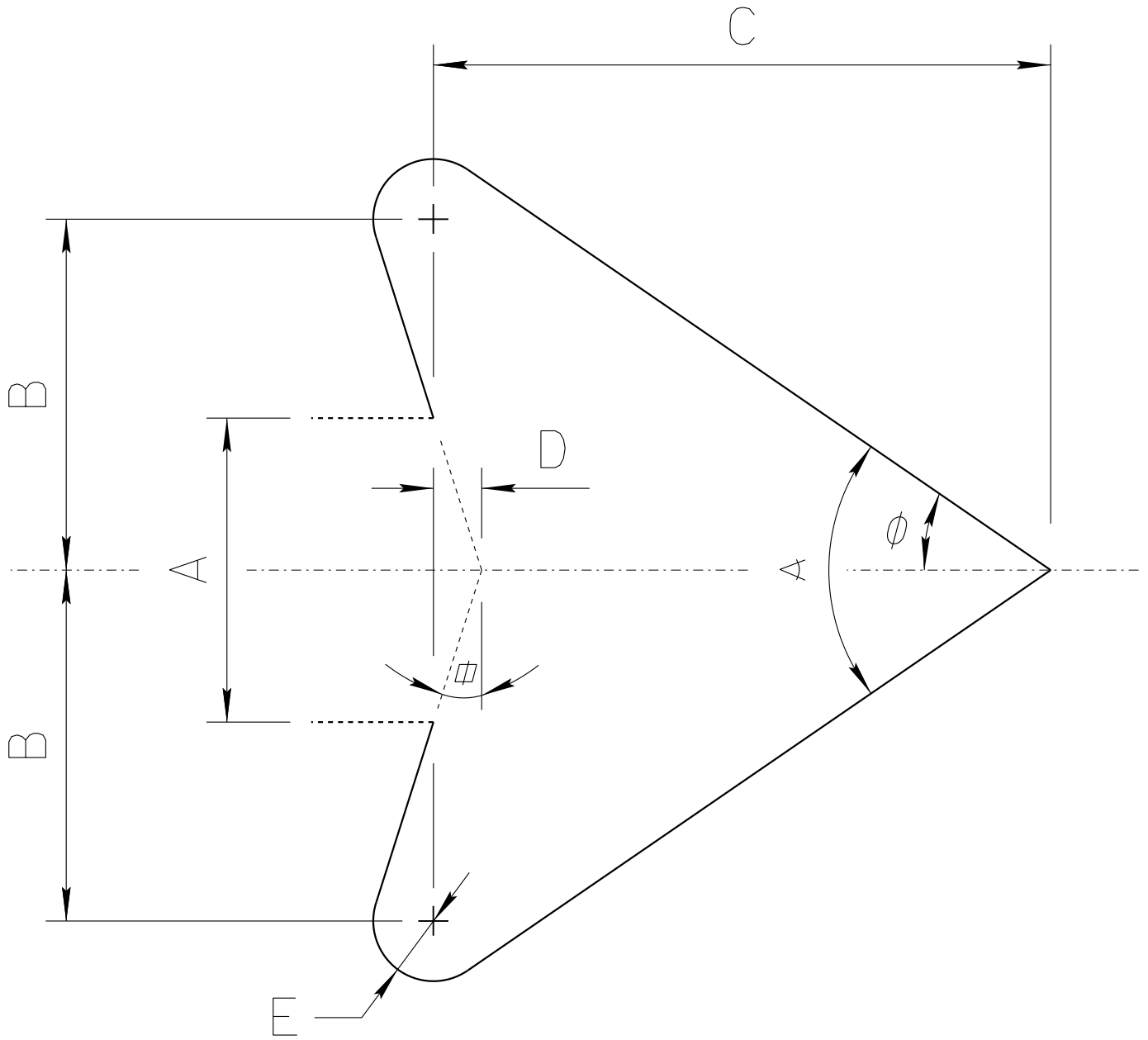
Arrow & Border: White (Reflective), Black (Non-Reflective)  
 Background: Blue, Brown, Green, Orange or White (Reflective)

**All dimensions are in inches**

**Designed By:** L. LOPEZ

**Issue Date:** August 2023

# ADOT STANDARD ARROW HEAD DETAILS



$A = \text{Arrow Shaft Stroke Width}$

$B = 1.15 \times A$

$C = 2.025 \times A$

$D = 0.16169 \times A$

$E = 0.2 \times A$

$\alpha = 17.92^\circ$

$\phi = 34.519^\circ$

$\angle = 69.038^\circ$

ARIZONA DEPARTMENT OF TRANSPORTATION  
TRAFFIC ENGINEERING GROUP

DRAWN:

L. LOPEZ

DATE:

AUGUST/2019