



James P. Delton
Assistant State Engineer

ARIZONA DEPARTMENT OF TRANSPORTATION * MATERIALS GROUP

1221 NORTH 21ST AVENUE PHOENIX, ARIZONA 85009-3740 PHONE (602) 712 - 7231

CHANGE LETTER

MATERIALS TESTING MANUAL	CHANGE LETTER NO. 26
SUBJECT: Title Page; Table of Contents; Series 900 (Materials Quality Assurance Program)	EFFECTIVE DATE: January 7, 2011

SUMMARY:

NOTE: Unless otherwise specified, changes issued under this Change Letter are effective for projects with a bid opening date on or after January 7, 2011. Retain items removed from the Materials Testing Manual under this change letter for use as necessary on projects with a bid opening date prior to January 7, 2011.

1. **TITLE PAGE** - The Title Page has been revised to show the latest Change Letter number and revision date. Please replace the existing Title Page with the attached.
2. **TABLE OF CONTENTS** - The Table of Contents has been revised to reflect the changes made in this Change Letter. Please replace the existing Table of Contents with the attached.
3. **SERIES 900 (MATERIALS QUALITY ASSURANCE PROGRAM)** – This section of the Materials Testing Manual has been revised in its entirety. Please replace the existing Series 900 (Materials Quality Assurance Program) with the attached.

A handwritten signature in black ink, appearing to be "J. Delton", written over a horizontal line.

James P. Delton, P.E.
Assistant State Engineer
Materials Group

Attachments

MATERIALS
TESTING MANUAL
SAMPLING AND TESTING PROCEDURES



PREPARED BY:
ARIZONA DEPARTMENT OF TRANSPORTATION
INTERMODAL TRANSPORTATION DIVISION
MATERIALS GROUP

REVISED TO CHANGE LETTER NO. 26
(January 7, 2011)



January 7, 2011
(5 Pages)

MATERIALS TESTING MANUAL

TABLE OF CONTENTS

Introduction (June 17, 2008)
Glossary of Terms (July 15, 2005)

SERIES 100 SAMPLING**

ARIZ 103a	Sampling Bituminous Materials
ARIZ 104d	Sampling Bituminous Mixtures
ARIZ 105d	Sampling Soils and Aggregates
ARIZ 108	Sampling Hydrated Lime and Lime Products
ARIZ 109	Sampling Metallic Materials
ARIZ 110	Sampling Miscellaneous Materials

** The above Arizona Test Methods, and also commonly used AASHTO procedures in this category, are shown on Series 100 Cover Sheet (December 15, 2010).

SERIES 200 SOILS AND AGGREGATES**

ARIZ 201c	Sieving of Coarse and Fine Graded Soils and Aggregates
ARIZ 205c	Composite Grading
ARIZ 210b	Specific Gravity and Absorption of Coarse Aggregate
ARIZ 211d	Specific Gravity and Absorption of Fine Aggregate
ARIZ 212e	Percentage of Fractured Coarse Aggregate Particles
ARIZ 220	Determination of Cement Content Required for Cement Treated Mixtures
ARIZ 221	Moisture-Density Relations of Cement Treated Mixtures
ARIZ 222b	Rock Correction Procedure for Maximum Density Determination of Cement Treated Mixtures
ARIZ 223	Field Density of Cement Treated Mixtures by Sand Cone Method or by Rubber Balloon Method
ARIZ 225a	Maximum Dry Density and Optimum Moisture of Soils by Proctor Method A
ARIZ 226	Maximum Density and Optimum Moisture of Soils - Methods C and D
ARIZ 227c	Rock Correction Procedure for Maximum Dry Density and Optimum Moisture Content Determination

ARIZ 229a	Calibration of Standard Sand and Sand Cone
ARIZ 230a	Field Density by the Sand Cone Method
ARIZ 232b	Moisture-Density Relationship Using Typical Moisture-Density Curves (One Point Proctor) Method A
ARIZ 233c	Flakiness Index of Coarse Aggregate
ARIZ 235	Density and Moisture Content of Soil and Soil-Aggregate Mixtures by the Nuclear Method
ARIZ 236b	Determining pH and Minimum Resistivity of Soils and Aggregates
ARIZ 237b	Determining pH and Soluble Salts of Soils
ARIZ 238a	Percent Carbonates in Aggregate
ARIZ 240a	Sieve Analysis and Separation of Salvaged AC Pavement Particles for Recycled Asphaltic Concrete
ARIZ 241a	Compressive Strength of Molded Cement Treated Base or Soil-Cement Specimens
ARIZ 242a	Sand Equivalent Test for Mineral Aggregate for Asphaltic Concrete Friction Course
ARIZ 244	Artificial Grading of Mineral Aggregate
ARIZ 245	Maximum Dry Density and Optimum Moisture of Soils by Proctor Alternate Method D
ARIZ 246a	Moisture-Density Relationship using Typical Moisture-Density Curves (One Point Proctor) Alternate Method D
ARIZ 247a	Particle Shape and Texture of Fine Aggregate Using Uncompacted Void Content
ARIZ 248	Alternate Procedures for Sieving of Coarse and Fine Graded Soils and Aggregates
ARIZ 249	Remolded Ring Samples for Direct Shear, Swell, and Consolidation
ARIZ 251a	Combined Coarse and Fine Aggregate Specific Gravity and Absorption

** The above Arizona Test Methods, and also commonly used AASHTO procedures in this category, are shown on Series 200 Cover Sheet (December 15, 2010).

SERIES 300 CONCRETE**

ARIZ 308a	Method of Adjusting Concrete Mixes for Variations in Moisture Content
ARIZ 309a	Testing Impervious Materials and Compounds for Curing Concrete
ARIZ 310a	Measuring Texture Depth of Portland Cement Concrete with Metal Tine Finish

ARIZ 311a	Method of Test for Flow of Grout Mixtures (Flow Cone Method)
ARIZ 314b	Compressive Strength of Cylindrical Concrete Specimens
ARIZ 315	Precast Mortar Blocks Test
ARIZ 317a	Obtaining and Testing Drilled Cores and Sawed Beams of Concrete
ARIZ 318	Estimating the Development of Concrete Strength by the Maturity Method

** The above Arizona Test Methods, and also commonly used AASHTO and ASTM procedures in this category are show on Series 300 Cover Sheet (March 31, 2010).

SERIES 400 BITUMINOUS MIXTURES**

ARIZ 406c	Moisture Content of Bituminous Mixtures
ARIZ 410d	Compaction and Testing of Bituminous Mixtures Utilizing Four Inch Marshall Apparatus
ARIZ 411	Determination of Transverse Distributor Spread Rate
ARIZ 412b	Density of Compacted Bituminous Mixtures by the Nuclear Method
ARIZ 413	Extraction of Asphalt from Bituminous Mixtures by Soxhlet Extraction
ARIZ 415c	Bulk Specific Gravity and Bulk Density of Compacted Bituminous Mixtures
ARIZ 416d	Preparing and Splitting Field Samples of Bituminous Mixtures for Testing
ARIZ 417c	Maximum Theoretical Specific Gravity and Density of Field Produced Bituminous Mixtures (Rice Test)
ARIZ 421	Bituminous Material Content of Asphaltic Concrete Mixtures by the Nuclear Method
ARIZ 422	Compaction and Testing of Bituminous Mixtures Utilizing 152.4 mm (Six Inch) Marshall Apparatus
ARIZ 424a	Determination of Air Voids in Compacted Bituminous Mixtures
ARIZ 427	Asphalt Binder Content of Asphaltic Concrete Mixtures by the Ignition Furnace Method

** The above Arizona Test Methods, and also commonly used AASHTO procedures in this category, are show on Series 400 Cover Sheet (December 15, 2010).

SERIES 500 BITUMINOUS MATERIALS**

ARIZ 502b	Percentage of Uncoated Particles Using Asphalt Emulsions
ARIZ 504	Vacuum Recovery of Asphalt Emulsion Residue

ARIZ 505a	Asphalt Rejuvenating Agent Residue Insoluble in Petroleum Ether
ARIZ 509a	Rapid Determination of Asphaltenes and Chemical Reactivity of Asphalts
ARIZ 511	Recovery of Asphalt from Extraction Solution
ARIZ 512a	Residue by Evaporation

** The above Arizona Test Methods, and also commonly used AASHTO and ASTM procedures and specifications are shown on Series 500 Cover Sheet (July 15, 2005).

SERIES 600 CEMENT AND RELATED MATERIALS**

** Commonly used AASHTO and ASTM procedures in this category are shown on Series 600 Cover Sheet (July 15, 2005).

SERIES 700 CHEMICAL AND SPECIALTY**

ARIZ 702a	Testing of Paint, Varnish, Lacquer, and Related Material
ARIZ 714b	Sampling and Sieving of Crumb Rubber
ARIZ 719c	Heating and Drying Materials in Microwave Oven
ARIZ 725a	Tensile Proof Dowel Test
ARIZ 726a	Reflectance, Dry Opacity, and Yellowness Index of Traffic Paint
ARIZ 727a	Chloride in Hardened Concrete
ARIZ 729b	Exchangeable Sodium in Topsoil
ARIZ 732	Calcium Carbonate in Topsoil (Neutralization Potential of Topsoil)
ARIZ 733a	Sulfate in Soils
ARIZ 734	Determination of Portland Cement Content in Cement Treated Base Material
ARIZ 735a	Testing of Thermoplastic Pavement Marking Material
ARIZ 736a	Chloride in Soils
ARIZ 738	Chloride in Concrete Admixtures
ARIZ 742	Mean Macrotecture Depth of Milled Pavement

** The above Arizona Test Methods, and also commonly used AASHTO and ASTM procedures in this category are shown on Series 700 Cover Sheet (March 31, 2010).

SERIES 800 DESIGN**

ARIZ 801a	Evaluation of Profiles
ARIZ 802g	Effect of Water on Strength of Compacted Bituminous Mixtures (Immersion Compression Test)
ARIZ 805b	Centrifuge Kerosene Equivalent of Aggregate, Including K-Factor
ARIZ 806e	Maximum Theoretical Specific Gravity of Laboratory Prepared Bituminous Mixtures (Rice Test)
ARIZ 807	Design of Slurry Seal
ARIZ 814a	Design of Asphaltic Concrete Friction Course
ARIZ 815c	Marshall Mix Design Method for Asphaltic Concrete
ARIZ 819a	Design of Exposed Aggregate Seal Coats
ARIZ 822	Determination of Additive or Asphalt Blend Required for Modification of Asphalt Viscosity
ARIZ 825a	Method of Test for Determining the Quantity of Asphalt Rejuvenating Agent Required for an Asphaltic Pavement
ARIZ 829a	Evaluation of Pavement Smoothness
ARIZ 832	Marshall Mix Design Method for Asphaltic Concrete (Asphalt-Rubber) [AR-AC]

** The above Arizona Test Methods are also shown
on Series 800 Cover Sheet (November 14, 2008).

SERIES 900 MATERIALS QUALITY ASSURANCE PROGRAM
(January 7, 2011)

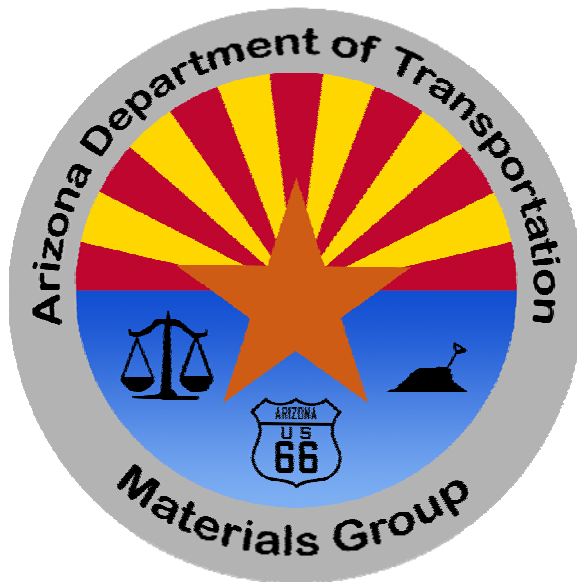
- Appendix A - BLANK
- Appendix B - BLANK
- Appendix C - Sampling Guide Schedule

SERIES 1000 CERTIFICATES (July 15, 2005)

APPENDIX

APPENDIX A1	Rounding Procedure (July 15, 2005)
APPENDIX A2	Metric Guide (July 15, 2005)
APPENDIX A3	Equipment Calibration and Verification (July 15, 2005)

ARIZONA DEPARTMENT OF TRANSPORTATION



MATERIALS QUALITY ASSURANCE PROGRAM

(ADOT Materials Testing Manual – Series 900)

January 7, 2011

This page intentionally left blank.

ADOT MATERIALS QUALITY ASSURANCE PROGRAM

Table of Contents

	<u>SECTION</u>	<u>PAGE</u>
I.	Scope	3
II.	List of Abbreviations	4
III.	Glossary of Terms	5
IV.	List of Figures	7
V.	Quality Assurance	8
	A. Contractor Testing	8
	B. Materials Acceptance	8
	1. Acceptance Sampling and Testing	9
	2. Materials Certification	9
	C. Independent Assurance Sampling and Testing	10
	1. Frequency of Independent Assurance Sampling and Testing	11
	2. Comparison and Reporting of Independent Assurance Sampling and Testing	14
	D. Correlation Testing	18
	1. Frequency of Correlation Testing	18
	2. Comparison and Reporting of Correlation Testing	19
	E. Final Certification of Materials Incorporated in the Work	22
	1. Materials Sample Checklist	22
	2. Materials Certificate Log	22
	3. Materials Certification / Exception Report	22
	4. Regional Materials Engineer's Responsibilities	27
	5. Certification of Materials for Federal-Aid Projects (Other than Local Government)	31
	6. Certification of Materials for Non Federal-Aid Projects	31
	7. Certification of Materials for Local Government Federal-Aid Projects	31
	8. Certification of Materials for Consultant Administrated Projects	32

**Table of Contents
(Continued)**

<u>SECTION</u>	<u>PAGE</u>
VI. Laboratory Qualifications	33
A. ADOT Laboratory Inspection Program	33
1. Participation	34
2. Equipment Inspection	34
3. Procedural Inspection	34
4. Procedure and Report	35
B. ADOT Proficiency Sample Program	35
1. Participation	35
2. Proficiency Samples	35
3. Analysis/Reporting of Proficiency Sample Results	36
C. Conflict of Interest	37
VII. Sampling and Testing Personnel Qualification Requirements	38
APPENDIX A Blank	
APPENDIX B Blank	
APPENDIX C Sampling Guide Schedule	

I. SCOPE

The ADOT Materials Quality Assurance Program has been established in accordance with requirements of the *Code of Federal Regulations 23, Part 637, Subpart B - Quality Assurance Procedures for Construction*. Documented herein are details of the Quality Assurance Program and applicable policies, procedures, and guidelines.

The Quality Assurance Program represents the Department's commitment to consistently provide our customers with products and services that meet mutually agreed upon requirements. The program is intended to ensure all materials incorporated into ADOT projects satisfy specification requirements and to provide the highest degree of confidence in the reliability of tests performed by laboratories for ADOT projects.

This document has been prepared for utilizing materials acceptance procedures which are now generally employed by ADOT, i.e., acceptance sampling and testing being performed by ADOT or its designated agent(s).

The Quality Assurance Program is administered by the Materials Group Quality Assurance Section. Revisions to this program will be issued by the Quality Assurance Section through the authority of the Assistant State Engineer, Materials Group.

The Materials Quality Assurance Section maintains a website where information regarding its function can be found. Information regarding the "ADOT System for the Evaluation of Testing Laboratories", the ADOT "Directory of Approved Materials Testing Laboratories", the ADOT Laboratory Inspection Program, the ADOT Proficiency Sample Program, and Technician Certification may be obtained from this website. The address for this website is "www.azdot.gov/Highways/materials/quality_assurance.asp".

The "ADOT System for the Evaluation of Testing Laboratories" has been issued as Materials Policy and Procedure Directive (PPD) No. 19. The ADOT Materials Policy and Procedure Directives Manual, which contains P.P.D. No. 19, can be accessed at the following website: "www.azdot.gov/Highways/Materials/QA/QA_Manuals/index.asp".

II. LIST OF ABBREVIATIONS

AAP	AASHTO Accreditation Program
AASHTO	American Association of State Highway and Transportation Officials
ACI	American Concrete Institute
ADOT	Arizona Department of Transportation
AMRL	AASHTO Materials Reference Laboratory
ASTM	American Society for Testing and Materials
ATTI	Arizona Technical Testing Institute
CCRL	Cement and Concrete Reference Laboratory
CFR	Code of Federal Regulations
FAPG	Federal-Aid Policy Guide
I.A.	Independent Assurance Sampling and Testing Program
ITD	Intermodal Transportation Division
NICET	National Institute for Certification in Engineering Technologies
PPD	ADOT Materials Policy and Procedure Directive
RME	Regional Materials Engineer
QA	Quality Assurance
QC	Quality Control

III. GLOSSARY OF TERMS

Acceptance Program - All factors used by the State to determine the quality of the product as specified in the contract requirements. These factors include acceptance sampling and testing, and inspection of materials and workmanship.

Acceptance Sampling and Testing - Sampling and testing performed to determine the quality and acceptability of the materials and workmanship incorporated in a project.

Certification Acceptance Projects - Federal-aid projects which are advertised, awarded, and administered by a Local Government agency which satisfies the requirements of the "ADOT Certification Acceptance Procedures".

Contractor Testing - Random sampling and testing and other operational techniques and activities that are performed by the contractor/vendor to fulfill the contract requirements. Contractor testing is normally sampling and testing performed by the contractor for quality control of its materials.

Correlation Testing Program - Testing performed to check or establish variability of testing procedures and equipment between testing laboratories. ADOT requires split samples be tested by the Project Laboratory and the Regional or Central Laboratory.

Independent Assurance Sampling and Testing Program - Activities that are an unbiased and independent evaluation of sampling and testing used in the acceptance program. Independent Assurance samples and tests or other procedures shall be performed by qualified State personnel, or State designated agents such as qualified consultants, who do not have direct responsibility for contractor or acceptance sampling and testing on a project. The results of independent assurance tests are not used for determining the quality and acceptability of the materials and workmanship. Tests performed by the Materials Group Central Laboratory for use in the acceptance decision are not covered by the Independent Assurance Sampling and Testing Program.

Inspection - The process of observing, measuring, examining, testing, gauging, or otherwise evaluating materials, products, services, testing activities, and equipment.

Laboratory Technician - An employee of the laboratory who is assigned to perform the actual testing operations primarily conducted in the laboratory. Certain specifications may require technicians who are certified through appropriate certification programs determined by the Department.

Proficiency Sample Program - Homogeneous samples that are distributed and tested by two or more laboratories. The test results are compared to assure that the laboratories are obtaining results within prescribed limits of variability.

Qualified Laboratories - Laboratories which have been approved to perform testing activities for ADOT. These laboratories have met the requirements of the “ADOT System for the Evaluation of Testing Laboratories” (PPD No. 19). The ADOT “Directory of Approved Materials Testing Laboratories” lists laboratories meeting this criteria.

Qualified Sampling and Testing Personnel - Personnel who meet the requirements as established by ADOT.

Quality - Consistently conforming to mutually agreed upon requirements.

Quality Assurance - All those planned and systematic activities necessary to provide adequate confidence that a product or service satisfies given requirements for quality.

Quality Assurance Program - The organizational structure, policies, responsibilities, procedures, processes, and resources utilized for implementing quality assurance activities and ensuring continued compliance with applicable standards.

Random Sample - A sample drawn from a lot in which each increment in the lot has an equal probability of being chosen. All samples used for contractor or acceptance sampling and testing shall be random samples.

Testing Laboratory - An organization that measures, examines, performs tests; or otherwise determines the characteristics, properties, and performance of materials or products. ADOT issues the “Directory of Approved Materials Testing Laboratories” which lists testing laboratories approved to perform testing activities on ADOT projects.

Vendor - A supplier of project-produced material that is not the contractor.

IV. LIST OF FIGURES

<u>NUMBER</u>	<u>TITLE</u>	<u>PAGE</u>
Figure 1	Report of Independent Assurance Sampling and Testing (Blank Form)	12
Figure 2	Independent Assurance and Correlation Testing Allowable Variations (\pm)	16
Figure 3	Report of Independent Assurance Sampling and Testing (Example)	17
Figure 4	Report of Correlation Testing (Blank Form)	20
Figure 5	Report of Correlation Testing (Example)	21
Figure 6	Materials Certification Flow Chart	23
Figure 7	Sample Checklist Cover Sheet (Blank)	24
Figure 8	Sample Checklist First Page (Blank)	25
Figure 9	Sample Checklist Second Page (Blank)	26
Figure 10	Materials Certification / Exception Report (Example)	28
Figure 11	Final Materials Certification (Example)	30

V. QUALITY ASSURANCE

A. CONTRACTOR TESTING

When specified by Standard Specifications or Special Provisions, the contractor is required to perform specific sampling, testing, and other related activities. The primary purpose of contractor sampling and testing is to assure the contractor that their process is in control and producing a product satisfying ADOT contractual specifications.

Contractor sampling and testing shall be performed by qualified technicians and testing laboratories. Laboratory and technician qualification requirements are presented in the "ADOT System for the Evaluation of Testing Laboratories" (PPD No. 19). Laboratories satisfying the "ADOT System for the Evaluation of Testing Laboratories" are listed in the ADOT "Directory of Approved Materials Testing Laboratories", which is updated monthly. Information on accessing/obtaining the "ADOT System for the Evaluation of Testing Laboratories" and the ADOT "Directory of Approved Materials Testing Laboratories" is given in **Section I**.

The Resident Engineer has the responsibility and authority to review and approve contractor sampling and testing activities. Project personnel are also responsible for monitoring the contractor's performance and compliance with specification requirements. When requested by the Project or District, Materials Quality Assurance Section will perform an inspection of the contractor's testing laboratory in accordance with **Section VI (A)** of this manual.

B. MATERIALS ACCEPTANCE

The quality of materials and construction incorporated into ADOT construction projects are controlled by sampling and testing, and accepted based on specification compliance. Compliance with specifications is determined by acceptance sampling and testing. All materials shall be randomly sampled at prescribed frequencies as given in the Sampling Guide Schedule, **Appendix C**. Sampling and testing shall be performed by qualified laboratories and by qualified sampling and testing personnel.

Reliance should not be placed wholly on the results of sampling and testing in determining the acceptability of materials and construction work. The sampling and testing should be supplemented by sufficient visual inspection of the materials to determine whether the samples and tests are reasonably representative. In addition, there should be sufficient observation of the construction operations and processes to assure uniformly satisfactory results.

1. Acceptance Sampling and Testing

The Sampling Guide Schedule (**Appendix C**) applies to sampling frequencies only for acceptance sampling and testing. It gives the material type to be sampled, the frequency of sampling, location of samples, and testing to be performed. Acceptance samples must be obtained randomly by ADOT technicians or its designated agent.

It is the intent of the Sampling Guide Schedule to provide guidance to personnel responsible for sampling and testing materials, yet allow reasonable latitude for adapting to specific project needs. The frequency may vary for individual projects or phases of projects in accordance with job conditions, such as, the uniformity of materials at the source, the methods and equipment used, and weather conditions. The number of samples and locations from which they are taken should adequately assure or verify that the materials incorporated and construction produced are acceptable in accordance with the plans and specifications. The Engineer may direct that less acceptance sampling and testing be accomplished in particular cases he deems necessary provided concurrence from Materials Group is obtained. Conversely, the Engineer may direct that an amount of acceptance testing greater than the required minimum be done when he deems necessary.

The recommended number of acceptance samples is listed on a materials sample checklist [see **Section V(E)(1)**] issued for each project by the Quality Assurance Section. The number of samples given on the materials sample checklist is the recommended minimum derived from the project special provisions bidding schedule. For materials that are sampled on a time designated lot basis, an estimated lot quantity is used to determine the recommended number of acceptance samples.

2. Materials Certification

Acceptance of materials by "Certificate of Compliance" or "Certificate of Analysis" will be in accordance with Section 106.05 of the Standard Specifications and Section 1000 of the Materials Testing Manual.

Small quantities may be accepted on the basis of certification or based upon visual observations of the Engineer. Small quantities may be considered to be approximately 500 cubic yards or less of processed aggregate material or approximately 20 tons of bituminous material, portland cement, or fly ash. A small quantity of portland cement concrete should be considered to be 5 cubic yards or less. The Engineer should exercise careful judgment in the acceptance of small quantities. Considerations must include the significance of the product to the construction as well as the quantity. The recommended sizes of small quantities are to be considered approximate, not maximums.

Some materials are pre-sampled at the supplier's yard by the Regional or Central Laboratory, tested, and, if specifications are met, tagged with an ADOT green sticker showing the project number, lab number, lot number, individual approving material, and date of approval. For materials that are green tagged, it may not be necessary to do any further sampling and testing. However, the proper laboratory should be contacted for verification of the materials acceptability.

Some materials approved for use are shown on the Department's Approved Products List. The Approved Products List is maintained by the Arizona Transportation Research Center and can be obtained at "www.azdot.gov/TPD/ATRC/Pride/apl.asp". This list includes products that have been pre-tested and found acceptable for Department use.

C. INDEPENDENT ASSURANCE SAMPLING AND TESTING

The Code of Federal Regulations, Title 23 Part 637B, requires the implementation of an Independent Assurance Program. Its definition of an independent assurance program is as follows:

"Activities that are an unbiased and independent evaluation of all the sampling and testing procedures used in the acceptance program."

The independent assurance program evaluates the sampling/testing personnel and testing equipment used in acceptance of materials. The Code of Federal Regulations allows observations, split sample results, and proficiency sample results as means of evaluating testing personnel within a State's independent assurance program. Calibration checks, split sample results, and proficiency sample results are permissible inclusions to the I.A. program for evaluating acceptance testing equipment. ADOT currently evaluates laboratories' testing equipment and personnel by inspections, I.A. split samples, and proficiency samples. The independent assurance program does not directly determine the acceptability of materials.

The Regional Materials Engineers are responsible for administering the independent assurance program; they provide personnel and equipment to obtain the independent assurance samples. Communication shall be maintained between project and regional lab personnel to assure timely independent assurance sampling and testing is accomplished commensurate with project progress.

Materials requiring independent assurance sampling/testing are:

- Naturally occurring materials, such as soils and aggregates
- Mixtures containing naturally occurring materials
- Processed aggregates
- Mixtures containing processed aggregates

For the majority of construction materials produced for ADOT projects, the frequency of sampling for independent assurance remains a function of the number of samples used for acceptance on a project basis. Unless a material is represented by a very small quantity, at least one I.A. sample is required for each qualifying material type on each project.

Independent assurance samples shall be of sufficient quantity for a split to be tested by the project laboratory.

Independent Assurance testing for in-place density may consist of documented observations of the acceptance testing during routine independent assurance visits. Documentation of each observation must include, as a minimum; date of observation, a description of test location, type of density test performed, and test operator. A report of the independent assurance inspection shall be made on the "Report of Independent Assurance Sampling and Testing" form, shown in **Figure 1**, or an equivalent.

1. Frequency of Independent Assurance Sampling and Testing

Independent assurance (I.A.) sampling and testing shall be performed as early as possible after production or placement of the material begins.

The minimum frequency of independent assurance sampling and testing is given below.

- For asphaltic concrete produced under Specifications 406, 415, 416, or 417:
 - One independent assurance bituminous mixture sample shall be taken for every 5 acceptance lots. The I.A. sample shall be taken at a different location than any acceptance sample and will not be split with the laboratory performing acceptance testing. At least one I.A. bituminous mixture sample is required for each project having less than 5 acceptance lots.

ARIZONA DEPARTMENT OF TRANSPORTATION
REPORT OF INDEPENDENT ASSURANCE SAMPLING AND TESTING

Project #: _____ Resident Engineer: _____
TRACTS #: _____ Contractor: _____
Project Name: _____ District: _____
Material Type: _____ Sample Date: _____ I.A. Sample Rec'd Date: _____
Sample Location: _____ Sampled By: _____
Location of Supply: _____ I.A. Sample ID #: _____ Tested By (Lab): _____
Lot #: _____ I.A. Split ID #: _____ Tested By (Lab): _____

SPECIFICATION TEST CHARACTERISTIC																				
I.A. SAMPLE TEST RESULT																				
I.A. SPLIT SAMPLE TEST RESULT																				
VARIATION (I.A. SAMPLE vs. I.A. SPLIT)																				
ALLOWABLE VARIATION (±)																				
AVERAGE OF ACCEPTANCE TEST RESULTS																				
VARIATION (I.A. SAMPLE vs. ACCEPT. AVG.)																				
ALLOWABLE VARIATION (±)																				

Favorable Comparison Yes ___ No ___ / Test Characteristic(s): _____
Report of In-Place Density Observation: _____
Description of Test Location - _____
Type of Density Test Performed - _____
Date of Test and Test Operator - _____
Favorable Inspection - Yes ___ No ___ / Comments: _____
Individual Contacted and Date/Time Acceptance Lab Notified: _____
Action Taken: _____

Remarks: _____

44-3028 R3/98 C: Resident Engineer
Project Lab
Materials Group (Central)
Regional Materials Engineer: _____ (Signature and Date)

Figure 1

- Independent assurance sampling and testing, other than gradation, shall be performed on mineral aggregate for the bituminous mixture at the rate of one I.A. sample for every 40 acceptance samples.
- I.A. samples for compaction (separate cores) will not be taken.
- For asphaltic concrete produced under Specifications 407, 413, or 414:
 - Independent assurance sampling and testing for the bituminous mixture shall consist of observing the acceptance sampling and testing at a rate of one I.A. sample for every 20 acceptance samples.
 - Independent assurance sampling and testing shall be performed on mineral aggregate for the bituminous mixture at the rate of one I.A. sample for every 40 acceptance samples.
- For Class P portland cement concrete:
 - One independent assurance concrete mixture sample for compressive strength shall be taken for every 5 acceptance lots. The I.A. sample shall be taken at a different location than any acceptance sample and will not be split with the laboratory performing acceptance testing. At least one I.A. concrete mixture sample for compressive strength is required for each project having less than 5 acceptance lots.
 - Independent assurance sampling and testing of the concrete mixture, other than for compressive strength, shall consist of observing the acceptance sampling and testing at the rate of one I.A. sample for every 50 acceptance samples.
 - Independent assurance sampling and testing shall be performed on aggregate for the concrete mixture at the rate of one I.A. sample for every 40 acceptance samples.
- For Class S or B portland cement concrete:
 - Independent assurance sampling and testing for compressive strength of the concrete mixture shall be performed at the rate of one I.A. sample for every 40 acceptance samples. For I.A. split comparison results, duplicate sets of samples shall be taken, prepared, and tested.
 - Independent assurance sampling and testing of the concrete mixture, other than for compressive strength, shall consist of observing the acceptance sampling and testing at the same time that I.A. sampling is being performed for compressive strength.
 - Independent assurance sampling and testing shall be performed on aggregate for the concrete mixture at the rate of one I.A. sample for every 40 acceptance samples.

- For all other materials subject to I.A. sampling and testing:
 - One I.A. sample shall be taken for every 40 acceptance samples.

2. Comparison and Reporting of Independent Assurance Sampling and Testing

Each I.A. sample will normally have an I.A. split run by the ADOT acceptance lab, with some exceptions as noted below. I.A. sample results shall be promptly compared to I.A. split sample results and, when applicable, to the average of acceptance test results.

- For asphaltic concrete produced under Specifications 406, 415, 416, or 417:
 - I.A. samples of bituminous mixture are not split to the acceptance lab; there is no comparison between I.A. and I.A. Split test results.
 - The I.A. bituminous mixture sample test results are compared to the average of acceptance tests of the lot from which it was taken.
 - Each I.A. test result for samples of mineral aggregate for the bituminous mixture, other than gradation, is compared to its I.A. split result.
- For asphaltic concrete produced under Specifications 407, 413, or 414:
 - Each observation performed for independent assurance sampling and testing of the bituminous mixture shall be documented by recording the date of each observation, name of the test operator performing the acceptance sampling and testing, and the acceptability of the sampling and testing performed. The documentation shall be recorded on the “Report of Independent Assurance and Testing” form, or equivalent.
 - Each I.A. test result for samples of mineral aggregate for the bituminous mixture is compared to its I.A. split result.
- For Class P portland cement concrete:
 - I.A. samples for compressive strength of the concrete mixture are not split to the acceptance lab; there is no comparison between I.A. and I.A. Split test results. The I.A. compressive strength test result is compared to the average of acceptance tests of the lot from which it was taken.

- Each observation performed for independent assurance sampling and testing of the concrete mixture, other than for compressive strength, shall be documented by recording the date of each observation, name of the test operator performing the acceptance sampling and testing, and the acceptability of the sampling and testing performed. The documentation shall be recorded on the “Report of Independent Assurance and Testing” form, or equivalent.
 - Each I.A. test result for samples of aggregate for the concrete mixture is compared to its I.A. split result.
- For Class S or B portland cement concrete:
 - Each I.A. test result for compressive strength of the concrete mixture is compared to its I.A. split result.
 - Each observation performed for independent assurance sampling and testing of the concrete mixture, other than for compressive strength, shall be documented by recording the date of each observation, name of the test operator performing the acceptance sampling and testing, and the acceptability of the sampling and testing performed. The documentation shall be recorded on the “Report of Independent Assurance and Testing” form, or equivalent.
 - Each I.A. test result for samples of aggregate for the concrete mixture is compared to its I.A. split result.
 - For all other materials subject to I.A. sampling and testing:
 - Each I.A. test result is compared to its I.A. split result.

For a favorable comparison each specified test characteristic must be within the allowable variations listed in **Figure 2** for “I.A. SAMPLE vs. I.A. SPLIT” and, when applicable, “I.A. SAMPLE vs. AVG. OF ACCEPT”.

The Regional Materials Engineer is responsible to determine allowable variations for test characteristics not listed in **Figure 2**.

Comparisons of I.A. results are documented on the “Report of Independent Assurance Sampling and Testing” form, shown in **Figure 1**, or an equivalent. An example of its use is shown in **Figure 3**. A report with unfavorable comparisons must be accompanied by documentation of an investigation and findings determining reasons for the unfavorable comparison of test results. Results of the independent assurance testing, comparisons, and findings for any unfavorable comparisons shall be communicated by the Regional Materials Engineer to the Resident Engineer/Project Lab within 5 working days of receiving the sample in the I.A. testing laboratory.

INDEPENDENT ASSURANCE AND CORRELATION TESTING ALLOWABLE VARIATIONS (±)

(See Notes 1 and 2 below.)

PORTLAND CEMENT CONCRETE			SOILS AND AGGREGATES		
TEST	I.A. SAMPLE VS. I.A. SPLIT	I.A. SAMPLE VS. AVG. OF ACCEPT.	TEST	I.A. SAMPLE VS. I.A. SPLIT	I.A. SAMPLE VS. AVG. OF ACCEPT.
Coarse Aggregate Gradation			Gradation, except for Portland Cement Concrete and Bituminous Mixtures		
+1"	4	N/A	+1"	4	N/A
1"	4	N/A	1"	4	N/A
3/4"	4	N/A	3/4"	4	N/A
1/2"	4	N/A	1/2"	4	N/A
3/8"	4	N/A	3/8"	4	N/A
1/4"	4	N/A	1/4"	4	N/A
No. 4	4	N/A	No. 4	4	N/A
No. 8	4	N/A	No. 8	4	N/A
Fine Aggregate Gradation			No. 16	4	N/A
No. 4	4	N/A	No. 40	3	N/A
No. 16	3	N/A	No. 200	1.5	N/A
No. 50	3	N/A	Sand Equivalent	6	N/A
No. 100	3	N/A	Flakiness Index	3	N/A
No. 200	1.5	N/A	Uncompacted Void Content	1.0	N/A
Class P			pH	0.4	N/A
28-Day Compressive Strength (See Note 3 below.)	N/A	15% of the mix design strength	Optimum Moisture, percent	1.0	N/A
Class S and B			Proctor Density, pcf	2.0	N/A
28-Day Compressive Strength (See Note 3 below.)	15% of the mix design strength	N/A	Fractured Coarse Agg. Particles (See Note 4 below.)	15% of the mean of the results	N/A
			Plasticity Index (See Note 4 below.)		
			Liquid Limit (LL)	13% of the mean of the results	N/A
			Plastic Limit (PL)	18% of the mean of the results	N/A
BITUMINOUS MIXTURES					
TEST	I.A. SAMPLE VS. I.A. SPLIT	I.A. SAMPLE VS. AVG. OF ACCEPT.			
	Not applicable for End-Product	Applicable only for End-Product			
Mineral Aggregate Gradation					
+3/4"	4	6			
3/4"	4	6			
1/2"	4	6			
3/8"	4	6			
No. 4	4	6			
No. 8	4	6			
No. 30	2	3			
No. 40	2	3			
No. 200	1.0	1.5			
Percent Asphalt	0.4	0.6			
Bulk Density, pcf	2.0	2.5			
Rice Density, pcf	2.0	2.5			
Voids, percent	1.5	2.0			
Marshall Stability, pounds	1200	1500			

Note 1: Use applicable test characteristics specified for material being tested.

Note 2: "I.A. SAMPLE VS. I.A. SPLIT" is to be used for correlation testing comparison.

Note 3: Allowable variations based on a percentage of the mix design strength shall be rounded if necessary to the nearest whole number.

Note 4: Allowable variations based on a percentage of the mean of the results shall be rounded if necessary to the nearest whole number.

REGIONAL MATERIALS ENGINEER TO DETERMINE ALLOWABLE VARIATIONS FOR TEST CHARACTERISTICS NOT SHOWN ABOVE.

Figure 2

ARIZONA DEPARTMENT OF TRANSPORTATION
REPORT OF INDEPENDENT ASSURANCE SAMPLING AND TESTING

Project #: F-0999-9(9)
 TRACS #: H099909C
 Project Name: SNOW CANYON - LITTLE LAKE
 Material Type: MA-3 1/4" AC (416 SPECIAL MIX)
 Sample Location: COLD FEED
 Location of Supply: XYZ COMMERCIAL
 Lot #: _____

Resident Engineer: FRANK BOSSY
 Contractor: ABC CONSTRUCTION
 District: FLAGSTAFF
 Sample Date: 1-23-04 I.A. Sample Rec'd Date: 1-26-04
 Sampled By: BOB TESTER
 I.A. Sample ID #: 04-136 Tested By (Lab): REGIONAL
 I.A. Split ID #: 04-078 Tested By (Lab): PROJECT

SPECIFICATION TEST CHARACTERISTIC	SAND EQUIV.	FRACT. AMT.	UNCOMP. Voids
I.A. SAMPLE TEST RESULT	64	88	46.3
I.A. SPLIT SAMPLE TEST RESULT	67	87	47.1
VARIATION (I.A. SAMPLE vs. I.A. SPLIT)	3	9	0.8
ALLOWABLE VARIATION (±)	6	12	1.0A
AVERAGE OF ACCEPTANCE TEST RESULTS			
VARIATION (I.A. SAMPLE vs. ACCEPT. AVG.)			
ALLOWABLE VARIATION (±)			

M P L E

Favorable Comparison Yes No / Test Characteristic(s): _____

Report of In-Place Density Observation:
 Description of Test Location - _____
 Type of Density Test Performed - _____
 Date of Test and Test Operator - _____
 Favorable Inspection - Yes No / Comments: TEO HEADMAN 1-29-04 11:45 AM

Individual Contacted and Date/Time Acceptance Lab Notified: _____
 Action Taken: _____

Remarks: _____

† 44-3928 R398 C: Resident Engineer
 Project Lab Materials Group (Central)
 Regional Materials Engineer: Scott Mann 1-29-04
 (Signature and Date)

Figure 3

When Central Lab performs testing of independent assurance samples, the results will be communicated to the Regional Materials Engineer who will notify the Resident Engineer within 5 working days of receipt of the sample by Central Lab.

When an I.A. split is used as an acceptance sample, it is recorded as an acceptance test on the project Materials Sample Checklist.

D. CORRELATION TESTING

Correlation testing is a quality assurance activity conducted to supplement independent assurance sampling and testing. Correlation testing provides a method to isolate problems that originate from sample splitting or testing error, and is conducted between the Project Lab and Regional Lab unless otherwise directed by the Regional Materials Engineer.

Materials requiring correlation testing are:

- Naturally occurring materials, such as soils and aggregates
- Mixtures containing naturally occurring materials
- Processed aggregates
- Mixtures containing processed aggregates

1. Frequency of Correlation Testing

At the prescribed frequency given below, a representative split of acceptance samples taken on the project is obtained for correlation testing. The correlation split samples shall be properly identified and promptly submitted to the Regional Lab for testing. The correlation split will be of sufficient size for the Regional Lab to duplicate the testing that is performed at the Project Lab.

Correlation testing shall be performed at a minimum frequency of one correlation sample split for every five acceptance samples. Every effort should be made to obtain a correlation split sample from the first acceptance sample. If favorable comparisons are achieved on three consecutive correlation splits for a given material, the Regional Materials Engineer may revise the correlation frequency for that material to a minimum of one correlation sample split for every ten acceptance samples.

- For asphaltic concrete produced under Specifications 406, 415, 416, or 417:
 - Correlation testing is not performed on the bituminous mixture.
 - Correlation testing, other than gradation, shall be performed at the frequency described above on mineral aggregate materials for the bituminous mixture.
- For asphaltic concrete produced under Specifications 407, 413, or 414:
 - Correlation testing is not performed on the bituminous mixture.
 - Correlation testing shall be performed at the frequency described above on mineral aggregate materials for the bituminous mixture.
- For Class P, S, or B portland cement concrete:
 - Correlation testing is not performed on portland cement concrete mixtures.
 - Correlation testing shall be performed at the frequency described above on the aggregate materials for the concrete mixture.
- For all other materials subject to correlation testing:
 - Correlation testing shall be performed at the frequency described above.

2. Comparison and Reporting of Correlation Testing

The Regional Materials Engineer or his/her representative will compare the results of tests performed on the acceptance sample and the correlation split. An evaluation must be made regarding the comparison of this data using **Figure 2** as a reference. For a favorable comparison, each specified test characteristic must be within the allowable variation shown for "I.A. SAMPLE vs. I.A. SPLIT". If there is an unfavorable comparison, an investigation should be initiated to determine the cause of the disparity. The investigation may include an inspection of the equipment used to perform both tests, a discussion with the test operators regarding their knowledge of the procedure, or retesting by exchanging samples if sufficient material is available. When the problem is isolated, the steps taken to resolve it shall be documented. The results of the correlation testing, comparisons, and the findings for any unfavorable comparisons are to be recorded on the "Report of Correlation Testing" form presented in **Figure 4**, or an equivalent form. An example of its use is given in **Figure 5**.

The Regional Materials Engineer is responsible to determine allowable variations for test characteristics not listed in **Figure 2**.

ARIZONA DEPARTMENT OF TRANSPORTATION
REPORT OF CORRELATION TESTING

Project #: _____ Resident Engineer: _____
TRACS #: _____ Contractor: _____
Project Name: _____ District: _____
Material Type: _____ Sample Date: _____ Correlation Split Rec'd Date: _____
Sample Location: _____ Sampled By: _____
Location of Supply: _____ Correlation Split I.D. #: _____ Tested By (Lab): _____
Lot #: _____ Acceptance Sample I.D. #: _____ Tested By (Lab): _____

SPECIFICATION TEST CHARACTERISTIC										
CORRELATION SPLIT TEST RESULT										
ACCEPTANCE SAMPLE TEST RESULT										
VARIATION (CORRELATION vs. ACCEPTANCE)										
ALLOWABLE VARIATION (±)										

Favorable Comparison Yes ___ No ___ / Test Characteristic(s): _____

Individual Contacted and Date/Time Acceptance Lab Notified: _____

Action Taken: _____

Remarks: _____

 44-3927 R398 C: Resident Engineer
Project Lab

Regional Materials Engineer: _____
(Signature and Date)

Figure 4

ARIZONA DEPARTMENT OF TRANSPORTATION
REPORT OF CORRELATION TESTING

Project #: F-099-9(9)
 TRACS #: H 999909C
 Project Name: SNOW CANYON - LITTLE CAKE
 Material Type: AGGREGATE BASE - CLASS 3
 Sample Location: WINDROW-STATION 640+00-LIFT 1
 Location of Supply: XYZ COMMERCIAL
 Lot #: _____
 Resident Engineer: FRANK BOSSY
 Contractor: ABC CONSTRUCTION
 District: FLAGSTAFF
 Sample Date: 1-13-04 Correlation Split Rec'd Date: 1-13-04
 Sampled By: JOE DOGOOD
 Correlation Split I.D. #: 04-057 Tested By (Lab): REGIONAL
 Acceptance Sample I.D. #: 04-098 Tested By (Lab): PROJECT

SPECIFICATION TEST CHARACTERISTIC	F ₄ "	3/4"	3/8"	#8	#200	LL	PL	Fract. MET.
CORRELATION SPLIT TEST RESULT	100	55	75	40	3.4	21	19	43
ACCEPTANCE SAMPLE TEST RESULT	100	94	71	37	2.8	23	20	38
VARIATION (CORRELATION vs. ACCEPTANCE)	0	1	A	4	3	0.6	2	1
ALLOWABLE VARIATION (±)	4	4	4	M	4	1.5	3	4

Favorable Comparison Yes No / Test Characteristic(s):
 Individual Contacted and Date/Time Acceptance Lab Notified: TED HERDMAN 1-16-04 2:30 pm
 Action Taken: LE

Remarks: _____

44-3927 R3/98 C: Resident Engineer Project Lab
 Regional Materials Engineer: Matt Mann 1-16-04
 (Signature and Date)

Figure 5

The results of the correlation testing, comparisons, and findings of any unfavorable comparisons shall be communicated by the Regional Materials Engineer to the Resident Engineer/Project Lab within five working days of receipt of the sample in the correlation testing laboratory.

E. FINAL CERTIFICATION OF MATERIALS INCORPORATED IN THE WORK

The following information outlines the procedure to be followed in certifying that the materials incorporated in the construction work, and the construction operations controlled by sampling and testing, were in conformity with the approved plans and specifications.

A “Materials Certification Flow Chart” is given in **Figure 6**. This flow chart provides a brief illustration of the requirements given herein.

1. Materials Sample Checklist

Materials Group, Quality Assurance Section, will originate the project “Materials Sample Checklist” recommending the number of acceptance, independent assurance, and correlation samples to be taken for each material. Materials that are not listed, but are accepted by testing shall be added to the sample checklist by the project. “As-Built” quantities that are substantially different from plans quantities shall be noted on the sample checklist and the Quality Assurance Section contacted for revised sampling and testing requirements. A blank sample checklist and cover letter are given in **Figures 7 through 9**. Upon completion of each project, the sample checklist shall be completed and signed by the Resident Engineer, and submitted to the Regional Materials Engineer for review.

2. Materials Certificate Log

A “Materials Certificate Log” shall be maintained in accordance with Series 1000 of the Materials Testing Manual. Upon completion of each project, the Materials Certificate Log shall be signed by the Resident Engineer. A copy of the log shall be attached to the Materials Sample Checklist and submitted to the Regional Materials Engineer for review.

3. Materials Certification / Exception Report

The materials records for each project shall be reviewed by the Resident Engineer. A “Materials Certification / Exception Report” shall then be prepared by the Resident Engineer. The Materials Certification / Exception Report must include at a minimum the following statement:

MATERIALS CERTIFICATION FLOW CHART

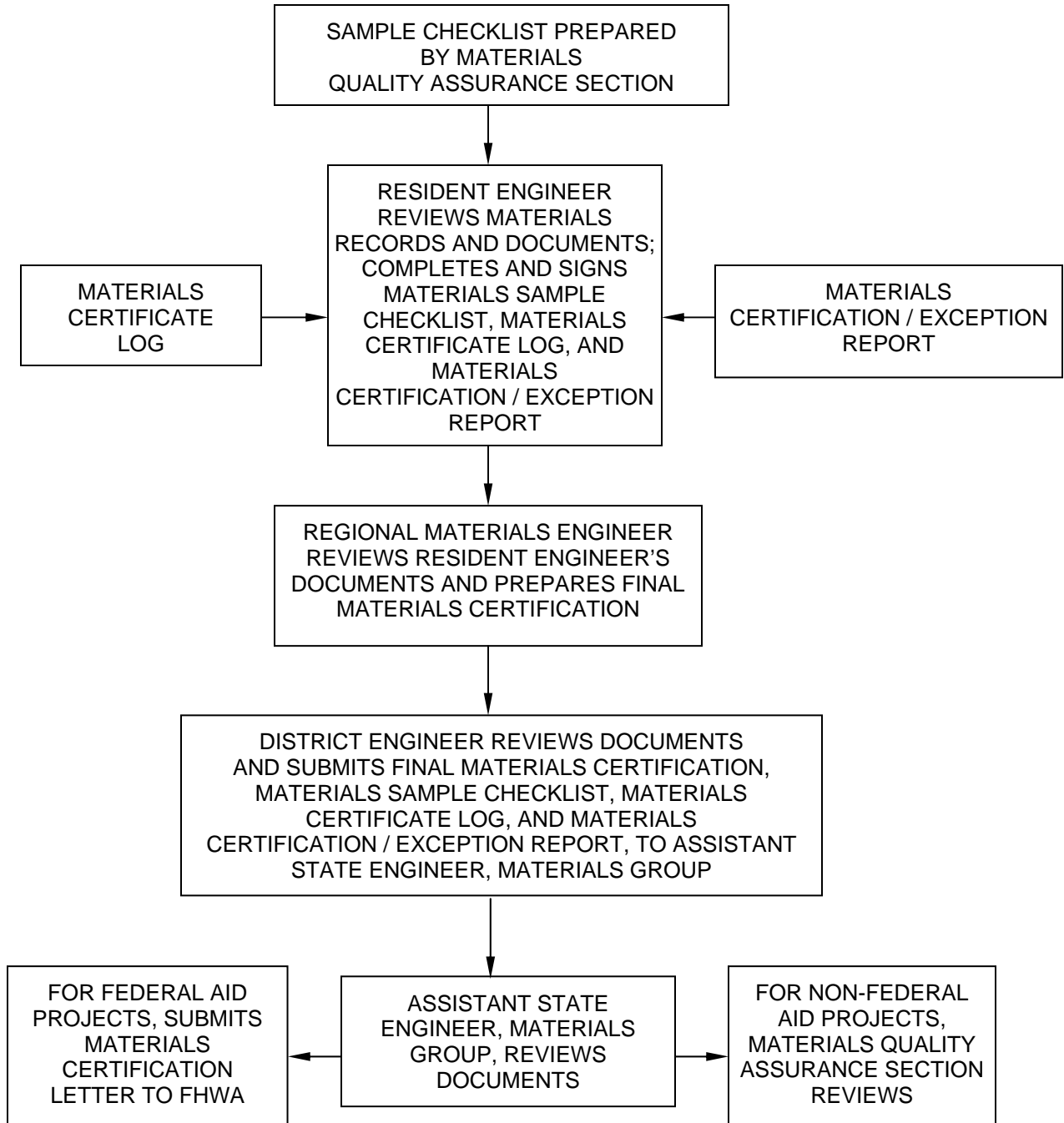


Figure 6

ARIZONA DEPARTMENT OF TRANSPORTATION
OFFICE MEMO

TO: (Name)
Resident Engineer (Mail Drop)
(District Name)

FROM: BRENT CONNER
Quality Assurance Engineer
Materials Group (068-R)

RE: PROJECT NO. ()

Materials Group has prepared the following checklist of the materials to be used in constructing this project which require testing for approval. The number of recommended samples for acceptance (ACCP), independent assurance (IAS), and correlation (CORR) testing are derived from the "Materials Quality Assurance Program" (Series 900 of the Materials Testing Manual) which includes the Sampling Guide Schedule (Appendix C). The recommendations are estimates for the plan quantity and may change due to actual material production rates. Documentation must be provided in the Materials Exception Report if the required testing detailed in the Sampling Guide Schedule is not performed. All materials used on the project which require testing should be listed. Materials used which were not originally listed should be added.

Acceptance samples taken by the project are to be recorded under the ACCP SAMPLES TAKEN BY PROJECT column, regardless of where the tests are performed. The number of samples tested shall be recorded in the appropriate column. Acceptance testing performed by the project is to be recorded under the ACCP SAMPLES TESTED BY PROJECT column, acceptance testing performed by the Regional Lab is to be recorded under the REGIONAL ACCP column, and acceptance testing performed by the Central Lab is to be recorded under the CENTRAL ACCP column. Independent assurance sample splits used for acceptance testing are to be recorded under the ACCP column for the lab performing the acceptance testing. Correlation testing performed by the Regional Lab is to be recorded in the REGIONAL CORR column. Independent assurance sample testing is to be recorded under the column for the lab performing the testing, i.e., REGIONAL IAS or CENTRAL IAS columns.

Upon completion of the project, the Materials Sample Checklist shall be signed and submitted to the Regional Materials Engineer for review and signature. A copy of the completed and signed Certificate Log(s) shall be attached to the Materials Sample Checklist. These documents shall be forwarded to the District Engineer for review and approval. The District Engineer will then forward the Sample Checklist, Certificate Log, Exception Report (if needed) and Certification Letter to the Assistant State Engineer, Materials Group.

BC:drb

c: (Name)
Regional Materials Engineer
(Region Name) Regional Lab (Mail Drop)

ARIZONA DEPARTMENT OF TRANSPORTATION
MATERIALS SAMPLE CHECKLIST

ITEM NUMBER	MATERIAL	PLAN QUANTITY	ACTUAL QUANTITY IF VARIES FROM PLAN QUANTITY	NUMBER OF SAMPLES				NUMBER OF SAMPLES TESTED					
				RECOMMENDED		PROJECT		REGIONAL		CENTRAL			
				A	C	ACCP	ACCP	A	I	A	I		
				C	O	SAMPLES	SAMPLES	C	A	C	A		
				R	R	TAKEN	TESTED	C	O	R	C		
				P	R	BY	BY	P	R	R	P		
						PROJECT	PROJECT						

* Small quantity, no samples required.

Figure 8

ITEM NUMBER	MATERIAL	PLAN QUANTITY	ACTUAL QUANTITY IF VARIES FROM PLAN QUANTITY	NUMBER OF SAMPLES		NUMBER OF SAMPLES TESTED						
				RECOMMENDED		PROJECT		REGIONAL		CENTRAL		
				A	C	A	ACCP	A	I	A		
				C <td>O <td>R <td>SAMPLES</td> <td>C <td>A <td>C <td>I <td>A </td></td></td></td></td></td></td>	O <td>R <td>SAMPLES</td> <td>C <td>A <td>C <td>I <td>A </td></td></td></td></td></td>	R <td>SAMPLES</td> <td>C <td>A <td>C <td>I <td>A </td></td></td></td></td>	SAMPLES	C <td>A <td>C <td>I <td>A </td></td></td></td>	A <td>C <td>I <td>A </td></td></td>	C <td>I <td>A </td></td>	I <td>A </td>	A
				C <td>R <td>T <td>TESTED</td> <td>C <td>O <td>C <td>R <td>A </td></td></td></td></td></td></td>	R <td>T <td>TESTED</td> <td>C <td>O <td>C <td>R <td>A </td></td></td></td></td></td>	T <td>TESTED</td> <td>C <td>O <td>C <td>R <td>A </td></td></td></td></td>	TESTED	C <td>O <td>C <td>R <td>A </td></td></td></td>	O <td>C <td>R <td>A </td></td></td>	C <td>R <td>A </td></td>	R <td>A </td>	A
				P <td>R <td>BY</td> <td>PROJECT</td> <td>P <td>R <td>R <td>P <td>S </td></td></td></td></td></td>	R <td>BY</td> <td>PROJECT</td> <td>P <td>R <td>R <td>P <td>S </td></td></td></td></td>	BY	PROJECT	P <td>R <td>R <td>P <td>S </td></td></td></td>	R <td>R <td>P <td>S </td></td></td>	R <td>P <td>S </td></td>	P <td>S </td>	S

* Small quantity, no samples required.

- NOTE:
- A. One acceptance sample every other day of production. Minimum one IAS per 40 acceptance samples.
 - B. One acceptance sample per 100 CY. Minimum one IAS per 40 acceptance samples.
 - C. Five samples per lot for acceptance. Minimum one IAS per 40 acceptance samples.
 - D. Minimum one acceptance sample per shift. Minimum one IAS per 40 acceptance samples.
 - E. One sample per delivery unit. (per PPD No. 8)

REMARKS: _____

This is to certify that all materials, except those materials accepted by certification and those where no samples are required, were properly sampled and tested.

Report prepared by _____ Date _____

Reviewed by: _____
 Regional Materials Engineer (Signature and Date)

Figure 9

“I certify that I have reviewed the materials records for the above referenced project. The results of the tests used in the acceptance program indicate that the materials incorporated in the construction work, and the construction operations controlled by sampling and testing, were in conformity with the approved plans and specifications. In addition, all material sampling and testing was performed in accordance with the ADOT Materials Quality Assurance Program.”

Any exceptions to the certification shall be detailed in the report. Exceptions may include, but are not limited to, the following: material represented by failing tests which has been incorporated into the work, inadequate certificates, insufficient sampling and testing, and other deficiencies in meeting the requirements of the Materials Quality Assurance Program. Each exception, including exceptions that are covered by supplemental agreements, must be listed and explained in the report. The explanation shall include the corrective action taken to remedy the exception, including references to any supplemental agreements that provided for changes in specifications and/or acceptance of the material.

The Materials Certification / Exception Report shall be signed by the Resident Engineer and be submitted with the Materials Sample Checklist to the Regional Materials Engineer for review.

An example Materials Certification / Exception Report is given in **Figure 10**.

4. Regional Material Engineer’s Responsibilities

The Regional Materials Engineer shall review the completed Materials Sample Checklist, Materials Certificate Log, and Materials Certification / Exception Report. If necessary, they shall be returned to the Resident Engineer for correction. The Regional Materials Engineer shall also review the results of correlation and independent assurance sampling and testing for the project.

The Regional Materials Engineer shall then prepare a “Final Materials Certification” on behalf of the District Engineer. The Final Materials Certification must include at a minimum the following statement:

ARIZONA DEPARTMENT OF TRANSPORTATION

OFFICE MEMO

(Date)

TO: (Name)
(District Name) District Engineer (Mail Drop)

THRU: (Name)
(Region Name) Regional Materials Engineer (Mail Drop)

FROM: (Name)
Resident Engineer (Mail Drop)

RE: MATERIALS CERTIFICATION / EXCEPTION REPORT

PROJECT: Project No. S-999-D-999
Tracs No. H 9999 01C
EARTH - SUN HIGHWAY (U.S. 777)
(Venus - Mercury)

I certify that I have reviewed the materials reports for the above referenced project. The results of the tests used in the acceptance program indicate that the materials incorporated in the construction work, and the construction operations controlled by sampling and testing, were in conformity with the approved plans and specifications. In addition, all material sampling and testing was performed in accordance with the ADOT Materials Quality Assurance Program. Exceptions to the above certification are as follows:

- 1) Lots #1 and #2 of Section 416 Asphaltic Concrete (End Product) paving, were in reject but allowed to remain in place at the maximum negative penalty (see Memo from Materials Group dated 02/05/02).
- 2) Two-point barbed wire was used rather than the 4-point required in the project plans. This change was initiated by the State Game and Fish Department and is documented in Change Order #7.
- 3) An inadequate number of Aggregate Base correlation samples were obtained. Correlation frequency requirements have been reviewed with the proper personnel to ensure an adequate number of samples are obtained in the future.

Resident Engineer

Attachments: Materials Sample Checklist
Materials Certificate Log

Figure 10

“The results of the tests used in the acceptance program indicate that the materials incorporated in the construction work, and the construction operations controlled by sampling and testing, were in conformity with the approved plans and specifications. In addition, all material sampling and testing was performed in accordance with the ADOT Materials Quality Assurance Program.”

If there are exceptions, the Final Materials Certification shall also state, “**See exceptions listed in the attached Materials Certification / Exception Report.**”

If independent assurance or correlation testing were required, the Final Materials Certification must also include the following statement:

“Independent assurance sampling and testing, and correlation testing, were performed in accordance with the ADOT Materials Quality Assurance Program. Results of this testing compared favorably with the results of acceptance sample testing.”

If independent assurance or correlation testing were not required, the above statement shall be modified accordingly.

Significant deviations in the required independent assurance sampling and testing or correlation testing shall be noted in the Final Materials Certification as exceptions.

The Final Materials Certification shall be signed by the Regional Materials Engineer and forwarded, along with the Materials Sample Checklist, Materials Certificate Log, and Materials Certification / Exception Report, to the District Engineer for review and signature.

An example Final Materials Certification is given in **Figure 11**.

ARIZONA DEPARTMENT OF TRANSPORTATION

OFFICE MEMO

(Date)

TO: (Name)
Assistant State Engineer
Materials Group (068R)

FROM: (Name)
(District Name) District Engineer (Mail Drop)

(Name)
(Region Name) Regional Materials Engineer (Mail Drop)

RE: FINAL MATERIALS CERTIFICATION

PROJECT: Project No. S-99-D-999
Tracs No. H 9999 01C
EARTH - SUN HIGHWAY (U.S. 777)
(Venus - Mercury)

Attached are the Materials Sample Checklist, Materials Certificate Log, and Materials Certification / Exception Report for this project.

The results of the tests used in the acceptance program indicate that the materials incorporated in the construction work, and the construction operations controlled by sampling and testing, were in conformity with the approved plans and specifications. In addition, all material sampling and testing was performed in accordance with the ADOT Materials Quality Assurance Program. See exceptions listed in the attached Materials Certification / Exception Report.

Independent assurance sampling and testing, and correlation testing, were performed in accordance with the ADOT Materials Quality Assurance Program. Results of this testing compare favorably with the results of acceptance testing.

(District Name) District Engineer

(Region Name) Regional Materials Engineer

Attachments: Materials Sample Checklist
Materials Certificate Log
Materials Certification / Exception Report

Figure 11

5. Certification of Materials for Federal-Aid Projects (Other than Local Government)

The Final Materials Certification, including attachments (Materials Sample Checklist, Materials Certificate Log, and Materials Certification / Exception Report), shall be sent to the Assistant State Engineer, Materials Group. The Assistant State Engineer, Materials Group, will review the documentation furnished by the District Engineer. Based on this documentation, the Assistant State Engineer, Materials Group, will prepare and submit a certification letter to the Federal Highway Administration. Accompanying that certification letter will be a copy of the Materials Certification / Exception Report. A copy of the certification letter and supporting documentation will be maintained on file by the Materials Group Quality Assurance Section.

6. Certification of Materials for Non Federal-Aid Projects

The Final Materials Certification, including attachments (Materials Sample Checklist, Materials Certificate Log, and Materials Certification / Exception Report), shall be sent to the Assistant State Engineer, Materials Group. The Materials Group, Quality Assurance Section, will review the documentation furnished by the District Engineer. Based on this documentation, the Materials Group, Quality Assurance Section, will prepare a certification letter. The certification letter and supporting documentation will be maintained on file by the Materials Group Quality Assurance Section.

7. Certification of Materials for Local Government Federal-Aid Projects

Materials certification for local governments that have been granted Certification Acceptance status by ADOT, with the concurrence of the FHWA, shall follow the process detailed in the agreement. Materials certification for self-administered local government projects outside of the Certification Acceptance process will be conducted as follows:

(a) The local agency engineer will be responsible for sampling and testing materials in accordance with the ADOT Materials Testing Manual and the Specifications.

(b) Independent Assurance Sampling and Testing and Correlation Testing is not required on projects off of the National Highway System. Local government projects on the National Highway System require Independent Assurance Sampling and Testing and Correlation Testing which will be performed by the ADOT Regional Lab as the work progresses.

(c) Independent Assurance and Correlation samples taken by ADOT personnel, as outlined in item (b) above do not relieve the local agency's engineer of the responsibility for sampling and testing of materials in accordance with item (a) above.

(d) At the completion of the project, the local agency engineer will complete the Materials Sample Checklist, Materials Certificate Log, and Materials Certification / Exception Report, as detailed in sections (V)(E)(1) through (V)(E)(3) above. These documents will be submitted to the ADOT Project Monitor for review. If necessary, the documents will be returned to the local agency engineer for correction. Upon approval by the ADOT Project Monitor, the documents will be forwarded to the Regional Materials Engineer for review.

(e) The Regional Materials Engineer and District Engineer will prepare the Final Materials Certification as outlined in section (V)(E)(4) above. The Final Materials Certification, including attachments (Materials Sample Checklist, Materials Certificate Log, and Materials Certification / Exception Report), shall be sent to the Assistant State Engineer, Materials Group.

(f) The Assistant State Engineer, Materials Group, will review the documentation furnished by the District Engineer. Based on this documentation, the Assistant State Engineer, Materials Group, will prepare and submit a certification letter to the Federal Highway Administration. Accompanying that certification letter will be a copy of the Materials Certification / Exception Report. A copy of the certification letter and supporting documentation will be maintained on file by the Materials Group Quality Assurance Section.

8. Certification of Materials for Consultant Administered Projects

Materials certification for consultant administered projects will be conducted as follows:

(a) The consultant engineer will be responsible for sampling and testing materials in accordance with the ADOT Materials Testing Manual and the Specifications.

(b) Independent Assurance Sampling and Testing and Correlation Testing will be performed by the ADOT Regional Lab as the work progresses.

(c) Independent Assurance and Correlation samples taken by ADOT personnel, as outlined in item (b) above do not relieve the consultant engineer of the responsibility for sampling and testing of materials in accordance with item (a) above.

(d) At the completion of the project, the consultant engineer will complete the Materials Sample Checklist, Materials Certificate Log, and Materials Certification / Exception Report, as detailed in sections (V)(E)(1) through (V)(E)(3) above. These documents will be submitted to the ADOT Project Monitor for review. If necessary, the documents will be returned to the consultant engineer for correction. Upon approval by the ADOT Project Monitor, the documents will be forwarded to the Regional Materials Engineer for review.

(e) The Regional Materials Engineer and District Engineer will prepare the Final Materials Certification as outlined in section (V)(E)(4) above. The Final Materials Certification, including attachments (Materials Sample Checklist, Materials Certificate Log, and Materials Certification / Exception Report), shall be sent to the Assistant State Engineer, Materials Group.

(f) For Federal-Aid projects, the Assistant State Engineer, Materials Group, will review the documentation furnished by the District Engineer. Based on this documentation, the Assistant State Engineer, Materials Group, will prepare and submit a certification letter to the Federal Highway Administration. Accompanying that certification letter will be a copy of the Materials Certification / Exception Report. A copy of the certification letter and supporting documentation will be maintained on file by the Materials Group Quality Assurance Section.

(g) For Non Federal-Aid projects, the Materials Group, Quality Assurance Section, will review the documentation furnished by the District Engineer. Based on this documentation, the Materials Group, Quality Assurance Section, will prepare a certification letter. The certification letter and supporting documentation will be maintained on file by the Materials Group Quality Assurance Section.

VI. LABORATORY QUALIFICATIONS

The “ADOT System for the Evaluation of Testing Laboratories” (PPD No. 19) details the requirements that laboratories must satisfy to be approved for performing testing activities for ADOT. In addition to being AASHTO certified through the AASHTO Accreditation Program (AAP), laboratories must participate in the ADOT Laboratory Inspection Program and the ADOT Proficiency Sample Program. AAP accreditation and ADOT approval must be received for all test methods that are to be performed on ADOT projects.

A. ADOT LABORATORY INSPECTION PROGRAM

The Quality Assurance Section of Materials Group administers an inspection program of all materials testing laboratories performing testing activities for the Department. Compliance to test procedures and equipment requirements are included in the

inspection. All laboratories performing Acceptance or Referee testing are inspected on an approximate 18-month cycle. Information regarding the ADOT Laboratory Inspection Program is also available on the Materials Quality Assurance Section website. Information on accessing this website is given in **Section I**.

1. Participation

All independent, contractor, materials supplier, government, and other testing laboratories desiring to perform testing activities for ADOT must submit to an inspection as specified in the “ADOT System for the Evaluation of Testing Laboratories” (PPD No. 19). The inspection considers those elements of service that the respective laboratory proposes to offer to the Department. This requirement includes laboratories submitting asphaltic concrete mix designs and those performing acceptance and referee testing for the Department.

The Quality Assurance Section will inspect only laboratories that are involved, or seeking involvement, in an activity related to the design or construction of an ADOT project.

2. Equipment Inspection

The laboratory equipment inspection will consist of checking dimensional, calibration, and specification conformance of all apparatus and equipment required by the test procedures contained in the Materials Testing Manual or other applicable specifications. Equipment related documentation, required by AASHTO R18, is also checked during this inspection. This inspection is not a calibration service for non-ADOT laboratories. Any equipment found unacceptable must be repaired, properly calibrated, or removed from service at the expense of the owner laboratory. Laboratory facilities will also be checked for compliance with applicable standards, such as, proper temperature and humidity control.

Documentation of the calibration and verification of equipment used in field testing which is not available during the inspection will be reviewed for compliance with applicable requirements.

3. Procedural Inspection

The procedural inspection serves as a tool to evaluate the performance of laboratory technicians when performing tests in accordance with the ADOT Materials Testing Manual or other applicable specifications. Arizona, AASHTO, and ASTM test methods referenced in the Materials Testing Manual will be observed. In the event that Arizona Test Methods deviate from those given in a similar AASHTO or ASTM procedure, the Materials Testing Manual will govern.

4. Procedure and Report

The equipment and procedural inspections are normally conducted simultaneously; however, circumstances may dictate independent inspections. The inspection formats will generally conform to the techniques employed by AMRL and CCRL, as appropriate. When a departure from the requirements of a test method is observed by the inspectors, they will point it out to the laboratory personnel so that immediate corrections can be made if possible. The inspectors will present a summary of their findings and identify deficiencies requiring corrective action at an informal exit review where any deficiencies discovered can be discussed openly. It is requested that the Laboratory Manager and Supervising Engineer be present at the exit review.

A written inspection report will be issued by the Quality Assurance Section to the laboratory that has been inspected. The laboratory must provide the Quality Assurance Engineer with satisfactory responses to the noted deficiencies within 30 days of the report issuance. The responses must provide satisfactory evidence that all significant deficiencies were corrected or that corrective action is in progress. The laboratory's inspection and responses will be considered when evaluating ADOT eligibility.

B. ADOT PROFICIENCY SAMPLE PROGRAM

The Quality Assurance Section administers the ADOT Materials Proficiency Sample Program. The program allows participants to evaluate the reliability of their testing by comparing their test results to a population of test data generated by all participants. Specified routine tests are performed in accordance with standard Arizona and AASHTO test methods by each participating laboratory on carefully prepared samples of highway construction materials and the test results reported to ADOT for review and analysis. Information regarding the ADOT Proficiency Sample Program is also available on the Materials Quality Assurance Section website. Information on accessing this website is given in **Section I**.

1. Participation

Participation in the ADOT Proficiency Sample Program is required for all laboratories performing Acceptance or Referee testing activities for the Department, as specified in the ADOT "System for the Evaluation of Testing Laboratories" (PPD No. 19). Participation by government agency laboratories not performing testing activities for the Department is voluntary.

2. Proficiency Samples

Proficiency samples are carefully prepared to be as homogeneous as possible to minimize the effect of material variability in evaluating the results. Each sample is sequentially numbered and, using random numbers, a set of samples is allocated to

each participant. To permit an estimate of single-operator precision, instructions are given for a single test operator to conduct all repetitions of an individual test method; however, it is not required that the same person conduct all test methods prescribed for a set of proficiency samples.

The program generally provides 8 to 10 proficiency samples per year. Typically, the material types and routine tests performed are:

- **Soil** - Gradation, Atterberg limits (PI), pH, resistivity, and moisture-density relations.
- **Fine Aggregate** - Gradation, sand equivalent, fine specific gravity, absorption, and uncompacted void content.
- **Coarse Aggregate** - Gradation, specific gravity, absorption, L.A. Abrasion, unit weight, fractured coarse aggregate particles, flakiness index, and percent carbonates.
- **Asphaltic Concrete** - Asphalt content, maximum theoretical specific gravity/density (Rice), Marshall stability/flow, Marshall compaction/density, gyratory compaction/density, moisture content, and gradation of mineral aggregate.
- **Portland Cement Concrete** - 7 and 28 day compressive strengths of prepared cylinders.
- **Asphalt Cement/Binder** - Rotational viscosity, pressurized aging, flash point, bending beam rheometer, direct tension, dynamic shear rheometer.
- **Emulsified Asphalt** - Saybolt-Furol viscosity, % residue, % uncoated particles, absolute viscosity, and sieve test.

3. Analysis/Reporting of Proficiency Sample Results

Proficiency sample test results are required to be submitted promptly upon completion of testing to the Quality Assurance Section no later than a specified date. All test data submitted is analyzed similar to the method presented in the paper: *“Statistical Evaluation of Interlaboratory Cement Tests”* by J. R. Crandall and R. L. Blaine, Volume 59 (1959) of the Proceedings of the American Society for Testing and Materials. A final report summarizing the results of the analysis is issued for each proficiency sample. The final report presents a statistical summary of results for the population of test data and a tabulation of each laboratory's individual data. Statistical characteristics presented are averages, standard deviations, coefficients of variation, z-scores, and

performance ratings. The z-score is equal to the number of standard deviations the data departs from the population mean. A laboratory's performance ratings are based on the following scale:

Rating	Standard Deviations from Mean (z-score)
5	0 to ≤ 1.0
4	> 1.0 to ≤ 1.5
3	> 1.5 to ≤ 2.0
2	> 2.0 to ≤ 2.5
1	> 2.5 to ≤ 3.0
0	> 3.0 ; eliminated from analysis
N	No data received

All data submitted is initially reviewed and analyzed. Invalid data is eliminated, then the remaining data is reanalyzed and presented in the proficiency sample final report. A single low rating, or a pair of low ratings, is not considered significant. A continuing trend of low ratings for a test characteristic should cause a laboratory to investigate its equipment and test methodology.

The "History of Z – Scores" charts accompany each proficiency sample final report. These charts show a laboratory's performance trend for each test characteristic. In addition, scatter diagrams are included in each proficiency sample report for each test characteristic. A scatter diagram shows each laboratory's reported results as a point on the graph, relative to the population averages for that test.

Participating laboratories are required to investigate the reason for discrepancies when their results are 2 or more standard deviations from the population average values (rating of 2 and less). The laboratories must report findings and corrective actions to the Quality Assurance Section within 30 days of the final report issuance. The performance and adequacy of the laboratory's responses will be considered when evaluating the eligibility of the laboratory to conduct testing activities for ADOT.

C. CONFLICT OF INTEREST

In order to avoid a conflict of interest, any qualified laboratory shall perform only one of the following types of testing on the same project: Acceptance testing, contractor testing, Independent Assurance testing, or dispute resolution (referee) testing. Independent assurance testing and correlation testing are performed as described herein.

VII. SAMPLING AND TESTING PERSONNEL QUALIFICATION REQUIREMENTS

Personnel supervising or performing sampling and testing activities for ADOT must meet the qualification requirements as given in the “ADOT System for the Evaluation of Testing Laboratories” (PPD No. 19). Information regarding requirements for the qualification of sampling and testing personnel is also available on the Materials Quality Assurance Section website. Information on accessing this website is given in **Section I**.

Individuals performing sampling and testing activities for ADOT who are not employed by ADOT or who are not associated with a laboratory which has met the requirements of the “ADOT System for the Evaluation of Testing Laboratories” must, in addition to meeting the qualification requirements specified in the above paragraph, utilize equipment and apparatus which has been inspected and found acceptable. Inspection of equipment and apparatus must be performed at the intervals specified in Appendix A3 of the ADOT Materials Testing Manual. Documentation of equipment and apparatus inspection(s) shall be properly maintained. Upon request by the Department, that documentation shall be made available for review. All equipment and apparatus shall be maintained in good working order. Inspection of equipment and apparatus shall be performed by either:

- An AASHTO accredited laboratory that has been approved by ADOT.
- An individual or company who, as a business, performs inspection and calibration of sampling and testing equipment.

Inspections and calibrations must be performed in accordance with established ADOT, AASHTO, ASTM, and *National Institute of Standards and Technology* (NIST) specifications. Proper calibration equipment that is traceable to NIST standards shall be used.

APPENDIX A

BLANK

This page intentionally left blank.

APPENDIX B

BLANK

This page intentionally left blank.

APPENDIX C

SAMPLING GUIDE SCHEDULE

Tables 1 through 8 - Acceptance Sampling Guide.

Table 9 - Illustration of Sampling Ticket and Listing of Codes for Purpose, Testing Lab, Size, and Roadway.

Table 10 - Listing of Material Codes and Type Codes Used By FAST (Field Office Automation SysTem).

Table 11 - Index of Materials Listed in Tables 1 through 8.

This page intentionally left blank.

TABLE 1 ACCEPTANCE SAMPLING GUIDE FOR SOILS				
SPECIFICATION SECTION	MATERIAL	TYPE OF TEST(S) REQUIRED	SAMPLING POINT	MINIMUM SAMPLING FREQUENCY
203	Borrow (within 3 ft. of finished subgrade elevation)	Gradation ⁽¹⁾	In-Place	One per 1500 ft.
		PI ⁽¹⁾		
203	Embankment	Proctor Density	In-Place	One per soil type, and as needed.
		Optimum Moisture		
		Compaction ⁽¹⁾	In-Place	
	Embankment for Metal Pile Location only	pH	In-Place or Source	One per source.
Resistivity				
203	Natural Ground for Embankment 5 ft. or less in height	Proctor Density	In-Place	One per soil type, and as needed.
		Optimum Moisture		
		Compaction ⁽¹⁾	In-Place	
⁽¹⁾ Independent Assurance Sampling and Testing required.				

TABLE 1 (continued) ACCEPTANCE SAMPLING GUIDE FOR SOILS				
SPECIFICATION SECTION	MATERIAL	TYPE OF TEST(S) REQUIRED	SAMPLING POINT	MINIMUM SAMPLING FREQUENCY
203	Subgrade	Proctor Density	Roadway	One per soil type, and as needed.
		Optimum Moisture		
		Compaction ⁽¹⁾	Roadway	One per 1500 ft.
		Gradation ⁽¹⁾	Roadway	One per 1500 ft. or change in material.
PI ⁽¹⁾				
203	Soil for Shoulder Build-up	Gradation	In-Place or Source	One per soil type.
		PI		
		pH		
		Soluble Salts		
		Compaction ⁽¹⁾	In-Place	One per 1500 ft. or as directed by the Engineer.
501	Trench Backfill	Proctor Density	In-Place	One per soil type, and as needed.
		Optimum Moisture		
		Compaction ⁽¹⁾	In-Place	One per 100 CY.
(1) Independent Assurance Sampling and Testing required.				

TABLE 1 (continued) ACCEPTANCE SAMPLING GUIDE FOR SOILS				
SPECIFICATION SECTION	MATERIAL	TYPE OF TEST(S) REQUIRED	SAMPLING POINT	MINIMUM SAMPLING FREQUENCY
803	Granite Mulch or Decomposed Granite	Gradation ⁽¹⁾	In-Place or Source	One per 10,000 CY.
804	Top Soil	Gradation ⁽¹⁾ ----- PI ⁽¹⁾ ----- pH ⁽¹⁾ ----- Soluble Salts ----- Calcium Carbonate ----- Exchangeable Sodium in percent and parts per million	In-place	Written soil analysis per source and six samples per lot [a lot is considered approximately 20,000 CY per source].
(1) Independent Assurance Sampling and Testing required.				

TABLE 2 ACCEPTANCE SAMPLING GUIDE FOR AGGREGATES				
SPECIFICATION SECTION	MATERIAL	TYPE OF TEST(S) REQUIRED	SAMPLING POINT	MINIMUM SAMPLING FREQUENCY
203 501 (When Contractor Quality Control is not a bid item.)	Structure Backfill or Pipe Backfill	Proctor Density ⁽¹⁾	Stockpile	One per source, and as needed.
		Optimum Moisture ⁽¹⁾		
		Compaction ⁽¹⁾	In-Place	One per 75 CY.
		Resistivity	Source or Stockpile	One per source.
		pH		
		Gradation ⁽¹⁾	On Job Site	One per 500 CY per source.
PI ⁽¹⁾				
203 501 (When Contractor Quality Control is a bid item.)	Structure Backfill or Pipe Backfill	Proctor Density ⁽¹⁾	Stockpile	One per source, and as needed.
		Optimum Moisture ⁽¹⁾		
		Compaction ⁽¹⁾	In-Place	One per 100 CY.
		Resistivity	Source or Stockpile	One per source.
		pH		
		Gradation ⁽¹⁾	On Job Site	One per 1500 CY per source.
PI ⁽¹⁾				
(1) Independent Assurance Sampling and Testing required.				

TABLE 2 (continued) ACCEPTANCE SAMPLING GUIDE FOR AGGREGATES				
SPECIFICATION SECTION	MATERIAL	TYPE OF TEST(S) REQUIRED	SAMPLING POINT	MINIMUM SAMPLING FREQUENCY
303 (When Contractor Quality Control is not a bid item.)	Aggregate Base Class 1, Class 2, and Class 3	Abrasion ⁽²⁾	Source	One per source.
		Proctor Density ⁽¹⁾	Crusher Belt or Stockpile	At start of production, then as material changes.
		Optimum Moisture ⁽¹⁾		
		Compaction ⁽¹⁾	Roadway	One per lift per 1000 ft.
		Fractured Coarse Aggregate Particles ⁽¹⁾	Stockpile	One per 10,000 tons.
		Gradation ⁽¹⁾	Windrow	One per 2000 tons, minimum one per shift.
		PI ⁽¹⁾		
<p>⁽¹⁾ Independent Assurance Sampling and Testing required.</p> <p>⁽²⁾ Provided Materials Group concurs, historical abrasion values may be used.</p>				

TABLE 2 (continued) ACCEPTANCE SAMPLING GUIDE FOR AGGREGATES				
SPECIFICATION SECTION	MATERIAL	TYPE OF TEST(S) REQUIRED	SAMPLING POINT	MINIMUM SAMPLING FREQUENCY
303 (When Contractor Quality Control is a bid item.)	Aggregate Base Class 1, Class 2, and Class 3	Abrasion ⁽²⁾	Source	One per source.
		Proctor Density ⁽¹⁾	Crusher Belt or Stockpile	At start of production, then as material changes.
		Optimum Moisture ⁽¹⁾		
		Compaction ⁽¹⁾	Roadway	One per lift per 1500 ft.
		Fractured Coarse Aggregate Particles ⁽¹⁾	Stockpile	One per 10,000 tons.
		Gradation ⁽¹⁾	Windrow	One per 2000 tons, minimum one per shift.
		PI ⁽¹⁾		
<p>(1) Independent Assurance Sampling and Testing required.</p> <p>(2) Provided Materials Group concurs, historical abrasion values may be used.</p>				

TABLE 2 (continued) ACCEPTANCE SAMPLING GUIDE FOR AGGREGATES				
SPECIFICATION SECTION	MATERIAL	TYPE OF TEST(S) REQUIRED	SAMPLING POINT	MINIMUM SAMPLING FREQUENCY
303 (When Contractor Quality Control is not a bid item.)	Aggregate Subbase Class 4, Class 5, and Class 6	Proctor Density ⁽¹⁾	Crusher Belt or Stockpile	At start of production, then as material changes.
		Optimum Moisture ⁽¹⁾		
		Compaction ⁽¹⁾	Roadway	
	Class 4	Fractured Coarse Aggregate Particles ⁽¹⁾	Stockpile	One per 10,000 tons.
		Gradation ⁽¹⁾	Windrow	One per 2000 tons, minimum one per shift.
		PI ⁽¹⁾		
		Abrasion ⁽²⁾	Source	One per source.
	Class 5 and Class 6	Gradation ⁽¹⁾	Windrow	One per 2000 tons, minimum one per shift.
		PI ⁽¹⁾		
	<p>⁽¹⁾ Independent Assurance Sampling and Testing required.</p> <p>⁽²⁾ Provided Materials Group concurs, historical abrasion values may be used.</p>			

TABLE 2 (continued) ACCEPTANCE SAMPLING GUIDE FOR AGGREGATES				
SPECIFICATION SECTION	MATERIAL	TYPE OF TEST(S) REQUIRED	SAMPLING POINT	MINIMUM SAMPLING FREQUENCY
303 (When Contractor Quality Control <u>is</u> a bid item.)	Aggregate Subbase Class 4, Class 5, and Class 6	Proctor Density ⁽¹⁾	Crusher Belt or Stockpile	At start of production, then as material changes.
		Optimum Moisture ⁽¹⁾		
		Compaction ⁽¹⁾	Roadway	
	Class 4	Fractured Coarse Aggregate Particles ⁽¹⁾	Stockpile	One per 10,000 tons.
		Gradation ⁽¹⁾	Windrow	One per 2000 tons, minimum one per shift.
		PI ⁽¹⁾		
		Abrasion ⁽²⁾	Source	One per source.
	Class 5 and Class 6	Gradation ⁽¹⁾	Windrow	One per 2000 tons, minimum one per shift.
PI ⁽¹⁾				
<p>(1) Independent Assurance Sampling and Testing required.</p> <p>(2) Provided Materials Group concurs, historical abrasion values may be used.</p>				

TABLE 2 (continued) ACCEPTANCE SAMPLING GUIDE FOR AGGREGATES				
SPECIFICATION SECTION	MATERIAL	TYPE OF TEST(S) REQUIRED	SAMPLING POINT	MINIMUM SAMPLING FREQUENCY
304 305	Aggregate for Cement Treated Base or Lean Concrete Base	Gradation ⁽¹⁾	Stockpile	One per 2000 tons, minimum one per shift.
		Fractured Coarse Aggregate Particles ⁽¹⁾	Stockpile	One per 10,000 tons.
		Abrasion ⁽²⁾	Source	One per source.
	for Cement Treated Base	PI ⁽¹⁾	Stockpile	One per 2000 tons, minimum one per shift.
	for Lean Concrete Base	Sand Equivalent ⁽¹⁾	Stockpile	One every other day of Lean Concrete Base production.
<p>(1) Independent Assurance Sampling and Testing required.</p> <p>(2) Provided Materials Group concurs, historical abrasion values may be used.</p>				

TABLE 2 (continued) ACCEPTANCE SAMPLING GUIDE FOR AGGREGATES				
SPECIFICATION SECTION	MATERIAL	TYPE OF TEST(S) REQUIRED	SAMPLING POINT	MINIMUM SAMPLING FREQUENCY
404	Cover Material	Abrasion ⁽²⁾	Source or Stockpile	One per source.
		Bulk O.D. Specific Gravity	Stockpile	One per source.
		Percent Carbonates		
		Dry Unit Weight		
		Fractured Coarse Aggregate Particles	Stockpile	One per 600 tons.
		Flakiness Index		
		Gradation ⁽¹⁾	Final Stockpile	One per 300 tons.
Moisture Content	Trucks at Scale	One per 300 tons.		
404 412 413 415	Blotter Material	Gradation ⁽¹⁾	Final Stockpile	One per stockpile.
<p>⁽¹⁾ Independent Assurance Sampling and Testing required.</p> <p>⁽²⁾ Provided Materials Group concurs, historical abrasion values may be used.</p>				

TABLE 2 (continued) ACCEPTANCE SAMPLING GUIDE FOR AGGREGATES				
SPECIFICATION SECTION	MATERIAL	TYPE OF TEST(S) REQUIRED	SAMPLING POINT	MINIMUM SAMPLING FREQUENCY
Refer to Special Provisions	Mineral Aggregate for Micro-Surfacing	Abrasion ⁽²⁾	Source or Stockpile	One per source.
		Percent Carbonates	Stockpile	One per source.
		Gradation ⁽¹⁾	Final Stockpile	One prior to start of Micro-Surfacing production, and one per 300 tons
		Sand Equivalent	Stockpile	One prior to start of Micro-Surfacing production, and one per 600 tons
		Fractured Coarse Aggregate Particles		
		Uncompacted Void Content		
		Moisture Content	Trucks at Scale	One per 300 tons.

(1) Independent Assurance Sampling and Testing required.
 (2) Provided Materials Group concurs, historical abrasion values may be used.

TABLE 2 (continued) ACCEPTANCE SAMPLING GUIDE FOR AGGREGATES				
SPECIFICATION SECTION	MATERIAL	TYPE OF TEST(S) REQUIRED	SAMPLING POINT	MINIMUM SAMPLING FREQUENCY
406	Mineral Aggregate for Asphaltic Concrete	Abrasion ⁽²⁾	Source or Stockpile	One per source.
		Percent Carbonates (if required)		
		Sand Equivalent	Stockpile	One at least five days prior to start of asphaltic concrete production.
		Fractured Coarse Aggregate Particles		
		Uncompacted Void Content		
		Ignition Furnace Calibration	Cold Feed or Stockpile	One per each two days of asphaltic concrete production, minimum of two per project.
		Sand Equivalent ⁽¹⁾		
		Fractured Coarse Aggregate Particles ⁽¹⁾		
		Uncompacted Void Content ⁽¹⁾		
Gradation	(See Bituminous Mixture requirements for Asphaltic Concrete on Page 46.)			
<p>(1) Independent Assurance Sampling and Testing required.</p> <p>(2) Historical abrasion values may be used provided testing was conducted within the past two years.</p>				

TABLE 2 (continued) ACCEPTANCE SAMPLING GUIDE FOR AGGREGATES				
SPECIFICATION SECTION	MATERIAL	TYPE OF TEST(S) REQUIRED	SAMPLING POINT	MINIMUM SAMPLING FREQUENCY
407	Mineral Aggregate for Asphaltic Concrete Friction Course (ACFC)	Abrasion ⁽²⁾	Source or Stockpile	One per source.
		Percent Carbonates		
		Specific Gravity		
		Gradation	Cold Feed	One prior to the start of ACFC production.
		Sand Equivalent ⁽¹⁾	Cold Feed or Stockpile	One prior to the start of ACFC production and one per each two days of ACFC production, minimum of two per project.
		Flakiness Index ⁽¹⁾		
		Fractured Coarse Aggregate Particles ⁽¹⁾		
Gradation ⁽¹⁾	Cold Feed or Hot Bins	One per 500 tons of ACFC production, minimum of one per shift.		
<p>⁽¹⁾ Independent Assurance Sampling and Testing required.</p> <p>⁽²⁾ Provided Materials Group concurs, historical abrasion values may be used.</p>				

TABLE 2 (continued) ACCEPTANCE SAMPLING GUIDE FOR AGGREGATES				
SPECIFICATION SECTION	MATERIAL	TYPE OF TEST(S) REQUIRED	SAMPLING POINT	MINIMUM SAMPLING FREQUENCY
409	Mineral Aggregate for Asphaltic Concrete (Miscellaneous Structural) [For Special Mix, see below.]	Abrasion ⁽²⁾	Source or Stockpile	One per source.
		Percent Carbonates (if required)		
		Sand Equivalent	Stockpile	One per source.
		Fractured Coarse Aggregate Particles		
		Gradation	Cold Feed or Hot Bins	At discretion of the Engineer.
409	Mineral Aggregate for Asphaltic Concrete (Miscellaneous Structural – Special Mix)	Abrasion ⁽²⁾	Source or Stockpile	One per source.
		Percent Carbonates (if required)		
		Sand Equivalent ⁽¹⁾	Stockpile	One per source.
		Uncompacted Void Content ⁽¹⁾		
		Fractured Coarse Aggregate Particles ⁽¹⁾	Cold Feed or Stockpile	One per each two days of asphaltic concrete production, minimum of two per project.
		Gradation		
<p>⁽¹⁾ Independent Assurance Sampling and Testing required.</p> <p>⁽²⁾ Provided Materials Group concurs, historical abrasion values may be used.</p>				

TABLE 2 (continued) ACCEPTANCE SAMPLING GUIDE FOR AGGREGATES				
SPECIFICATION SECTION	MATERIAL	TYPE OF TEST(S) REQUIRED	SAMPLING POINT	MINIMUM SAMPLING FREQUENCY
411	Mineral Aggregate for Asphaltic Concrete Friction Course (ACFC) - Miscellaneous	Abrasion ⁽²⁾	Source or Stockpile	One per source.
		Sand Equivalent	Stockpile	One per source.
		Flakiness Index		
		Fractured Coarse Aggregate Particles		
		Gradation	Cold Feed or Hot Bins	At the discretion of the Engineer.
413	Mineral Aggregate for Asphaltic Concrete (Asphalt-Rubber) [AR-AC]	Abrasion ⁽²⁾	Source or Stockpile	One per source.
		Percent Carbonates (if required)		
		Specific Gravity	Stockpile	One per source.
		Gradation	Cold Feed	One prior to the start of AR-AC production.
		Sand Equivalent ⁽¹⁾	Cold Feed or Stockpile	One prior to the start of AR-AC production and one per each two days of AR-AC production, minimum of two per project.
		Fractured Coarse Aggregate Particles ⁽¹⁾		
		Gradation ⁽¹⁾	Cold Feed or Hot Bins	One per 500 tons of AR-AC production, minimum of one per shift.
<p>(1) Independent Assurance Sampling and Testing required.</p> <p>(2) Provided Materials Group concurs, historical abrasion values may be used.</p>				

TABLE 2 (continued) ACCEPTANCE SAMPLING GUIDE FOR AGGREGATES				
SPECIFICATION SECTION	MATERIAL	TYPE OF TEST(S) REQUIRED	SAMPLING POINT	MINIMUM SAMPLING FREQUENCY
414	Mineral Aggregate for Asphaltic Concrete Friction Course (Asphalt-Rubber) [AR-ACFC]	Abrasion ⁽²⁾	Source or Stockpile	One per source.
		Specific Gravity	Stockpile	One per source.
		Percent Carbonates		
		Gradation	Cold Feed	One prior to the start of AR-ACFC production.
		Sand Equivalent ⁽¹⁾	Cold Feed or Stockpile	One prior to the start of AR-ACFC production and one per each two days of AR-ACFC production, minimum of two per project.
		Fractured Coarse Aggregate Particles ⁽¹⁾		
		Flakiness Index ⁽¹⁾		
Gradation ⁽¹⁾	Cold Feed or Hot Bins	One per 500 tons of AR-ACFC production, minimum of one per shift.		
<p>⁽¹⁾ Independent Assurance Sampling and Testing required.</p> <p>⁽²⁾ Provided Materials Group concurs, historical abrasion values may be used.</p>				

TABLE 2 (continued) ACCEPTANCE SAMPLING GUIDE FOR AGGREGATES				
SPECIFICATION SECTION	MATERIAL	TYPE OF TEST(S) REQUIRED	SAMPLING POINT	MINIMUM SAMPLING FREQUENCY
415	Mineral Aggregate for Asphaltic Concrete (Asphalt-Rubber) - End Product [AR-AC]	Abrasion ⁽²⁾	Source or Stockpile	One per source.
		Percent Carbonates (if required)		
		Sand Equivalent	Stockpile	One at least five working days prior to start of asphaltic concrete production.
		Fractured Coarse Aggregate Particles		
		Uncompacted Void Content		
		Ignition Furnace Calibration		
		Sand Equivalent ⁽¹⁾	Cold Feed or Stockpile	One per each two days of asphaltic concrete production, minimum of two per project.
		Fractured Coarse Aggregate Particles ⁽¹⁾		
		Uncompacted Void Content ⁽¹⁾		
Gradation		(See Bituminous Mixture requirements for Asphaltic Concrete (Asphalt-Rubber) - End Product on Page 48.)		
<p>⁽¹⁾ Independent Assurance Sampling and Testing required.</p> <p>⁽²⁾ Historical abrasion values may be used provided testing was conducted within the past two years.</p>				

TABLE 2 (continued) ACCEPTANCE SAMPLING GUIDE FOR AGGREGATES				
SPECIFICATION SECTION	MATERIAL	TYPE OF TEST(S) REQUIRED	SAMPLING POINT	MINIMUM SAMPLING FREQUENCY
416	Mineral Aggregate for Asphaltic Concrete - End Product [without reclaimed asphalt pavement (RAP)] (See Page 19 for mixes with RAP.)	Abrasion ⁽²⁾	Source or Stockpile	One per source.
		Percent Carbonates (if required)		
		Sand Equivalent	Stockpile	One at least five days prior to start of asphaltic concrete production.
		Fractured Coarse Aggregate Particles		
		Uncompacted Void Content (Special Mix only)		
		Ignition Furnace Calibration	Cold Feed or Stockpile	One per each two days of asphaltic concrete production, minimum of two per project.
		Sand Equivalent ⁽¹⁾		
		Fractured Coarse Aggregate Particles ⁽¹⁾		
		Uncompacted Void Content ⁽¹⁾ (Special Mix only)		
Gradation	(See Bituminous Mixture requirements for Asphaltic Concrete - End Product on Page 49.)			
<p>(1) Independent Assurance Sampling and Testing required.</p> <p>(2) Historical abrasion values may be used provided testing was conducted within the past two years.</p>				

TABLE 2 (continued) ACCEPTANCE SAMPLING GUIDE FOR AGGREGATES				
SPECIFICATION SECTION	MATERIAL	TYPE OF TEST(S) REQUIRED	SAMPLING POINT	MINIMUM SAMPLING FREQUENCY
416	Mineral Aggregate for Asphaltic Concrete - End Product [with reclaimed asphalt pavement (RAP)] See PPD ⁽³⁾ . (See Page 18 for mixes without RAP.)	Abrasion ⁽²⁾ (Virgin Agg. and RAP Agg. separately)	Source or Stockpile	One per source.
		Percent Carbonates (if required) (Composite of Virgin Agg. and RAP Agg.)		
		Sand Equivalent (Virgin Agg. only)	Stockpile	One at least five days prior to start of asphaltic concrete production.
		Fractured Coarse Aggregate Particles (Composite of Virgin Agg. and RAP Agg.)		
		Uncompacted Void Content (Special Mix only) (Virgin Agg. only)	Individual stockpiles (belt cut may be used for single stockpile)	One per each lot of asphaltic concrete production.
		Ignition Furnace Calibration (Virgin Agg., RAP Agg., and RAP material)		
		Sand Equivalent ⁽¹⁾ (Virgin Agg. only)	Cold Feed or Stockpile	One per each two days of asphaltic concrete production, minimum of two per project.
		Fractured Coarse Aggregate Particles ⁽¹⁾ (Composite of Virgin Agg. and RAP Agg. obtained from Arizona Test Method 427)		
Uncompacted Void Content ⁽¹⁾ (Special Mix only) (Virgin Agg. only)	(See Bituminous Mixture requirements for Asphaltic Concrete - End Product on Page 49.)			
Gradation				

⁽¹⁾ Independent Assurance Sampling and Testing required.
⁽²⁾ Historical abrasion values may be used provided testing was conducted within the past two years.
⁽³⁾ ADOT Materials Policy and Procedure Directive.

TABLE 2 (continued) ACCEPTANCE SAMPLING GUIDE FOR AGGREGATES				
SPECIFICATION SECTION	MATERIAL	TYPE OF TEST(S) REQUIRED	SAMPLING POINT	MINIMUM SAMPLING FREQUENCY
417	Mineral Aggregate for Asphaltic Concrete (End Product) SHRP Volumetric Mix [without reclaimed asphalt pavement (RAP)] (See Page 21 for mixes with RAP.)	Abrasion ⁽²⁾	Source or Stockpile	One per source.
		Percent Carbonates (if required)		
		Sand Equivalent	Stockpile	One at least five days prior to start of asphaltic concrete production.
		Fractured Coarse Aggregate Particles		
		Uncompacted Void Content		
		Ignition Furnace Calibration	Cold Feed or Stockpile	One per each two days of asphaltic concrete production, minimum of two per project.
		Sand Equivalent ⁽¹⁾		
		Fractured Coarse Aggregate Particles ⁽¹⁾		
Uncompacted Void Content ⁽¹⁾	(See Bituminous Mixture requirements for Asphaltic Concrete (End Product) SHRP Volumetric Mix on Page 50.)			
Gradation				
⁽¹⁾ Independent Assurance Sampling and Testing required. ⁽²⁾ Historical abrasion values may be used provided testing was conducted within the past two years.				

TABLE 2 (continued) ACCEPTANCE SAMPLING GUIDE FOR AGGREGATES				
SPECIFICATION SECTION	MATERIAL	TYPE OF TEST(S) REQUIRED	SAMPLING POINT	MINIMUM SAMPLING FREQUENCY
417	Mineral Aggregate for Asphaltic Concrete (End Product) SHRP Volumetric Mix [with reclaimed asphalt pavement (RAP)] See PPD ⁽³⁾ . (See Page 20 for mixes without RAP.)	Abrasion ⁽²⁾ (Virgin Agg. and RAP Agg. separately)	Source or Stockpile	One per source.
		Percent Carbonates (if required) (Composite of Virgin Agg. and RAP Agg.)		
		Sand Equivalent (Virgin Agg. only)	Stockpile	One at least five days prior to start of asphaltic concrete production.
		Fractured Coarse Aggregate Particles (Composite of Virgin Agg. and RAP Agg.)		
		Uncompacted Void Content (Virgin Agg. only)		
		Ignition Furnace Calibration (Virgin Agg., RAP Agg., and RAP material)		
		Gradation ⁽¹⁾ , Binder Content ⁽¹⁾ , and Moisture Content of RAP material	Individual stockpiles (belt cut may be used for single stockpile)	One per each lot of asphaltic concrete production.
		Sand Equivalent ⁽¹⁾ (Virgin Agg. only)	Cold Feed or Stockpile	One per each two days of asphaltic concrete production, minimum of two per project.
Fractured Coarse Aggregate Particles ⁽¹⁾ (Composite of Virgin Agg. and RAP Agg. obtained from Arizona Test Method 427)				
Uncompacted Void Content ⁽¹⁾ (Virgin Agg. only)				
Gradation	(See Bituminous Mixture requirements for Asphaltic Concrete (End Product) SHRP Volumetric Mix on Page 50.)			
⁽¹⁾ Independent Assurance Sampling and Testing required. ⁽²⁾ Historical abrasion values may be used provided testing was conducted within the past two years. ⁽³⁾ ADOT Materials Policy and Procedure Directive.				

TABLE 2 (continued) ACCEPTANCE SAMPLING GUIDE FOR AGGREGATES				
SPECIFICATION SECTION	MATERIAL	TYPE OF TEST(S) REQUIRED	SAMPLING POINT	MINIMUM SAMPLING FREQUENCY
Refer to Special Provisions	Mineral Aggregate for Asphaltic Concrete - Miscellaneous Paving	Abrasion ⁽²⁾	Source or Stockpile	One per source.
		Sand Equivalent	Stockpile	One per source.
		Gradation	Cold Feed or Hot Bins	At discretion of the Engineer.
501	Bedding Material for Pipe	Gradation ⁽¹⁾	Source or Stockpile	One per 300 CY per source.
		PI ⁽¹⁾		
		pH ⁽¹⁾		One per source.
		Resistivity ⁽¹⁾		
		Proctor Density ⁽¹⁾	Source or Stockpile	One per source, and as needed.
		Optimum Moisture ⁽¹⁾		
		Compaction ⁽¹⁾	In-Place	One every 50 CY.
501	Filter Material for Perforated Pipe	Gradation ⁽¹⁾	Source or Stockpile	One per 300 CY per source.
<p>⁽¹⁾ Independent Assurance Sampling and Testing required.</p> <p>⁽²⁾ Provided Materials Group concurs, historical abrasion values may be used.</p>				

TABLE 2 (continued) ACCEPTANCE SAMPLING GUIDE FOR AGGREGATES				
SPECIFICATION SECTION	MATERIAL	TYPE OF TEST(S) REQUIRED	SAMPLING POINT	MINIMUM SAMPLING FREQUENCY
501	Plating Material for Pipe Ends	Gradation	Source or Stockpile	One per source, and as needed.
		PI		
		Proctor Density		
		Optimum Moisture		
		Compaction	In-Place	One every 50 CY.
702	Crash Barrel Sand	See Fine Aggregate for PCC requirements on Page 25.	Plant or Site	One per source.
		Dry Unit Weight per cubic foot ⁽¹⁾	Site	One per each attenuator system location.
		Moisture Content ⁽¹⁾		
808	Bedding Material for Polyvinyl Chloride (PVC) Irrigation Pipe	Gradation	Source or Stockpile	One per source.

(1) Independent Assurance Sampling and Testing required.

TABLE 2 (continued) ACCEPTANCE SAMPLING GUIDE FOR AGGREGATES				
SPECIFICATION SECTION	MATERIAL	TYPE OF TEST(S) REQUIRED	SAMPLING POINT	MINIMUM SAMPLING FREQUENCY
913	Rock for Wire Tied Riprap, Gabions, Riprap (Slope Mattress), and Rail Bank Protection	Specific Gravity	Source	One per source.
		Gradation (visual)	Project	One per 1/2 shift.
	Rock for Grouted Riprap and Dumped Riprap	Specific Gravity	Source	One per source.
		Gradation	Project	One per 1/2 shift.

TABLE 2 (continued) ACCEPTANCE SAMPLING GUIDE FOR AGGREGATES				
SPECIFICATION SECTION	MATERIAL	TYPE OF TEST(S) REQUIRED	SAMPLING POINT	MINIMUM SAMPLING FREQUENCY
1006	Fine Aggregate for Portland Cement Concrete (PCC) Classes P, S, and B	Gradation ⁽¹⁾	Batch Plant Conveyer Belt or Stockpile	One every other day of PCC production.
		Sand Equivalent ⁽¹⁾		
		Soundness [when used in concrete over 4500 ft. elevation]	Stockpile	One per source. For evaluation of concrete aggregate sources, see PPD ⁽³⁾ .
		Organic Impurities		
		Mortar Strength		
Deleterious Substances [Clay Lumps and Friable Particles; Lightweight Particles]	Stockpile	At the discretion of Materials Group. For evaluation of concrete aggregate sources, see PPD ⁽³⁾ .		
<p>⁽¹⁾ Independent Assurance Sampling and Testing required.</p> <p>⁽³⁾ ADOT Materials Policy and Procedure Directive.</p>				

TABLE 2 (continued) ACCEPTANCE SAMPLING GUIDE FOR AGGREGATES				
SPECIFICATION SECTION	MATERIAL	TYPE OF TEST(S) REQUIRED	SAMPLING POINT	MINIMUM SAMPLING FREQUENCY
1006	Coarse Aggregate for Portland Cement Concrete (PCC) Classes P, S, and B	Gradation ⁽¹⁾	Batch Plant Conveyer Belt or Stockpile	One every other day of PCC production.
		Soundness [when used in concrete over 4500 ft. elevation]	Stockpile	One per source. For evaluation of concrete aggregate sources, see PPD ⁽³⁾ .
		Abrasion ⁽²⁾		
		Deleterious Substances [Clay Lumps and Friable Particles; Lightweight Particles; Material Passing No. 200 Sieve]	Stockpile	With the exception of "Material Passing No. 200 Sieve", at the discretion of Materials Group. For evaluation of concrete aggregate sources, see PPD ⁽³⁾ .
		Fractured Coarse Aggregate Particles	Stockpile	One per source.
<p>⁽¹⁾ Independent Assurance Sampling and Testing required.</p> <p>⁽²⁾ Provided Materials Group concurs, historical abrasion values may be used.</p> <p>⁽³⁾ ADOT Materials Policy and Procedure Directive.</p>				

TABLE 2 (continued) ACCEPTANCE SAMPLING GUIDE FOR AGGREGATES				
SPECIFICATION SECTION	MATERIAL	TYPE OF TEST(S) REQUIRED	SAMPLING POINT	MINIMUM SAMPLING FREQUENCY
Refer to Special Provisions	Aggregate for Arrestor Bed	Abrasion ⁽²⁾	Screen Belt or Stockpile	One per source.
		----- Specific Gravity		
		----- Gradation ⁽¹⁾	Screen Belt or Stockpile	One per shift.
		----- Fractured Coarse Aggregate Particles ⁽¹⁾		
		----- Flakiness Index ⁽¹⁾		
Refer to Special Provisions	Aggregate for Soil-Cement Bank Protection or Cement Stabilized Alluvium	Gradation ⁽¹⁾	Source or Stockpile	One per 2000 tons, minimum of one per day.
		----- PI ⁽¹⁾		
<p>(1) Independent Assurance Sampling and Testing required.</p> <p>(2) Provided Materials Group concurs, historical abrasion values may be used.</p>				

TABLE 3 ACCEPTANCE SAMPLING GUIDE FOR BITUMINOUS MATERIAL				
SPECIFICATION SECTION	MATERIAL	TYPE OF TEST(S) REQUIRED	SAMPLING POINT	MINIMUM SAMPLING FREQUENCY
1005	Recycling Agent RA-1 RA-5 RA-25 RA-75	Per Specifications	Circulation Line Recommended ⁽⁴⁾	Certificate of Compliance required and duplicate samples (each one gallon in a metal can) per 1/2 shift.
1005	Liquid Asphalt [Cutback Asphalt - (Medium Curing Type)] MC-70 MC-250 MC-800 MC-3000	Per Specifications	Distributor Recommended ⁽⁴⁾	Certificate of Compliance required and duplicate samples (each one gallon in a metal can) per delivery unit.
404	for Prime Coat			
<p>⁽⁴⁾ Point of sampling specified by Engineer.</p> <p>Note: During production, samples of bituminous material shall be taken by the contractor and witnessed by the Engineer.</p>				

TABLE 3 (continued) ACCEPTANCE SAMPLING GUIDE FOR BITUMINOUS MATERIAL				
SPECIFICATION SECTION	MATERIAL	TYPE OF TEST(S) REQUIRED	SAMPLING POINT	MINIMUM SAMPLING FREQUENCY
1005	Emulsified Asphalt RS-1 CRS-1 RS-2 CRS-2 SS-1 CSS-1 CRS-2P	Per Specifications	Supplier (For pre-approval of material.)	See PPD ⁽³⁾ .
		Residue	Distributor Recommended ⁽⁴⁾	See PPD ⁽³⁾ .
				For preapproved emulsions, Certificate of Compliance required and duplicate samples (each 1/2 gallon in a plastic container) per delivery unit.
404	for Chip Seal Coat, Tack Coat, and Fog Coat			For emulsions not preapproved, Certificate of Analysis required and duplicate samples (each 1/2 gallon in a plastic container) per delivery unit.

⁽³⁾ ADOT Materials Policy and Procedure Directive.
⁽⁴⁾ Point of sampling specified by Engineer.
 Note: During production, samples of bituminous material shall be taken by the contractor and witnessed by the Engineer.

TABLE 3 (continued) ACCEPTANCE SAMPLING GUIDE FOR BITUMINOUS MATERIAL				
SPECIFICATION SECTION	MATERIAL	TYPE OF TEST(S) REQUIRED	SAMPLING POINT	MINIMUM SAMPLING FREQUENCY
1005	Emulsified Asphalt Special Type (Diluted SS-1 or CSS-1)	Residue	Distributor Recommended ⁽⁴⁾	See PPD ⁽³⁾ . ----- For preapproved undiluted emulsions, Certificate of Compliance required and duplicate samples (each 1/2 gallon in a plastic container) per delivery unit. ----- For undiluted emulsions not preapproved, Certificate of Analysis required and duplicate samples (each 1/2 gallon in a plastic container) per delivery unit.
404	for Tack Coat and Fog Coat			
<p>⁽³⁾ ADOT Materials Policy and Procedure Directive. ⁽⁴⁾ Point of sampling specified by Engineer. Note: During production, samples of bituminous material shall be taken by the contractor and witnessed by the Engineer.</p>				

TABLE 3 (continued)				
ACCEPTANCE SAMPLING GUIDE FOR BITUMINOUS MATERIAL				
SPECIFICATION SECTION	MATERIAL	TYPE OF TEST(S) REQUIRED	SAMPLING POINT	MINIMUM SAMPLING FREQUENCY
1005	Asphalt Cement (PG XX-XX)	Per Specifications		
404	for Tack Coat			Certificate of Compliance required.
406 416 417	for Asphaltic Concrete		Supplier or Project	A two gallon sample (two full one-gallon metal cans) at least five days prior to start of asphaltic concrete production (for calibration of ignition furnace).
		Circulation Line Recommended ⁽⁴⁾		
406 407 409 411 416 417	for Asphaltic Concrete, or ACFC		Supplier or Project	Certificate of Analysis and a one gallon sample in a metal can required at least seven days prior to start of asphaltic concrete production.
			Circulation Line Recommended ⁽⁴⁾	
			Circulation Line Recommended ⁽⁴⁾	Certificate of Compliance required and duplicate samples (each one gallon in a metal can) per 1/2 shift.

⁽⁴⁾ Point of sampling specified by Engineer.

Note: During production, samples of bituminous material shall be taken by the contractor and witnessed by the Engineer.

TABLE 3 (continued) ACCEPTANCE SAMPLING GUIDE FOR BITUMINOUS MATERIAL				
SPECIFICATION SECTION	MATERIAL	TYPE OF TEST(S) REQUIRED	SAMPLING POINT	MINIMUM SAMPLING FREQUENCY
1005	Emulsified Recycling Agent (ERA) ERA-1 ERA-5 ERA-25 ERA-75	Per Specifications	Supplier (For pre-approval of material)	See PPD ⁽³⁾ .
		Residue	Distributor Recommended ⁽⁴⁾	See PPD ⁽³⁾ . For preapproved ERA, Certificate of Compliance required and duplicate samples (each 1/2 gallon in a plastic container) per delivery unit. For ERA not preapproved, Certificate of Analysis required and duplicate samples (each 1/2 gallon in a plastic container) per delivery unit.
404	ERA (Diluted) for Fog Coat	Residue	Distributor Recommended ⁽⁴⁾	See PPD ⁽³⁾ . For preapproved undiluted ERA, Certificate of Compliance required and duplicate samples (each 1/2 gallon in a plastic container) per delivery unit. For undiluted ERA not preapproved, Certificate of Analysis required and duplicate samples (each 1/2 gallon in a plastic container) per delivery unit.

⁽³⁾ ADOT Materials Policy and Procedure Directive.
⁽⁴⁾ Point of sampling specified by Engineer.
 Note: During production, samples of bituminous material shall be taken by the contractor and witnessed by the Engineer.

TABLE 3 (continued) ACCEPTANCE SAMPLING GUIDE FOR BITUMINOUS MATERIAL				
SPECIFICATION SECTION	MATERIAL	TYPE OF TEST(S) REQUIRED	SAMPLING POINT	MINIMUM SAMPLING FREQUENCY
1005 1009 410	Asphalt Cement (PG XX-XX) for Asphalt - Rubber (Sprayed Applications)	Per Specifications	Circulation Line - Delivery Unit	Certificate of Compliance required and duplicate samples (each one gallon in a metal can) for each shipment - not less than one set of duplicate samples for each 40 tons.
1005 1009 413 414 415	Asphalt Cement (PG XX-XX) for Asphalt - Rubber for AR-AC or AR-ACFC	Per Specifications	Delivery Unit Recommended ⁽⁴⁾	Certificate of Compliance required and duplicate samples (each one gallon in a metal can) per 1/2 shift.
1009	Crumb Rubber for Asphalt - Rubber Type A or Type B	Gradation	Project	Certificate of Compliance required and one sample [approximately 1500 grams (one gallon) per Arizona Test Method 714] per lot per type.
1009 410	Asphalt - Rubber [CRA ⁽⁵⁾] Type 1, Type 2, or Type 3 (Sprayed Applications)	Per Special Provisions.	Distributor Recommended ⁽⁴⁾	Certificate of Compliance required and a one gallon sample in a metal can per delivery unit.
<p>⁽⁴⁾ Point of sampling specified by Engineer.</p> <p>⁽⁵⁾ CRA = Crumb Rubber Asphalt</p> <p>Note: During production, samples of bituminous material shall be taken by the contractor and witnessed by the Engineer.</p>				

TABLE 3 (continued) ACCEPTANCE SAMPLING GUIDE FOR BITUMINOUS MATERIAL				
SPECIFICATION SECTION	MATERIAL	TYPE OF TEST(S) REQUIRED	SAMPLING POINT	MINIMUM SAMPLING FREQUENCY
1009 413 414 415	Asphalt - Rubber [CRA ⁽⁵⁾] Type 1, Type 2, or Type 3 For AR-AC or AR-ACFC	Penetration	Circulation Line Recommended ⁽⁴⁾	Certificate of Compliance required.
		Softening Point		Duplicate samples (each one gallon in a metal can) per 1/2 shift.
		Resilience		
		Rotational Viscosity		
		Rotational Viscosity (at plant)		One sample (one gallon in a metal can) per batch.
415	for AR-AC		Supplier or Project	A two gallon sample (two full one-gallon metal cans) at least five days prior to start of asphaltic concrete production (for calibration of ignition furnace).
			Circulation Line Recommended ⁽⁴⁾	
<p>⁽⁴⁾ Point of sampling specified by Engineer.</p> <p>⁽⁵⁾ CRA = Crumb Rubber Asphalt</p> <p>Note: During production, samples of bituminous material shall be taken by the contractor and witnessed by the Engineer.</p>				

TABLE 3 (continued) ACCEPTANCE SAMPLING GUIDE FOR BITUMINOUS MATERIAL				
SPECIFICATION SECTION	MATERIAL	TYPE OF TEST(S) REQUIRED	SAMPLING POINT	MINIMUM SAMPLING FREQUENCY
Refer to Special Provisions	Emulsified Asphalt for Cold Recycled Asphaltic Concrete HFE-150P HFE-300P	Per Special Provisions.	Supplier (for pre-approval of material.)	See PPD ⁽³⁾ .
		Residue	Distributor Recommended ⁽⁴⁾	See PPD ⁽³⁾ .
				For preapproved emulsions, Certificate of Compliance required and duplicate samples (each 1/2 gallon in a plastic container) per delivery unit.
				For emulsions not preapproved, Certificate of Analysis required and duplicate samples (each 1/2 gallon in a plastic container) per delivery unit.
<p>⁽³⁾ ADOT Materials Policy and Procedure Directive.</p> <p>⁽⁴⁾ Point of sampling specified by Engineer.</p> <p>Note: During production, samples of bituminous material shall be taken by the contractor and witnessed by the Engineer.</p>				

TABLE 4 ACCEPTANCE SAMPLING GUIDE FOR PORTLAND CEMENT CONCRETE				
SPECIFICATION SECTION	MATERIAL	TYPE OF TEST(S) REQUIRED	SAMPLING POINT	MINIMUM SAMPLING FREQUENCY
401 1006	Portland Cement Concrete (PCC) Class P	Compressive Strength ⁽¹⁾	Immediately before going into paver or forms	Five samples per lot.
		Slump ⁽¹⁾		(For compressive strength, one set of three cylinders per sample.)
		Air Content (when required ⁽¹⁾)		
		Temperature ⁽¹⁾		
		Thickness	Roadway	10 cores per lot.
1006	Portland Cement Concrete (PCC) Class S (with a compressive strength requirement less than 4,000 psi)	Compressive Strength ⁽¹⁾	At Discharge ⁽⁶⁾	One sample for each 100 CY, or fraction thereof, of continuously placed concrete per day from each batch plant. For daily placements of 10 CY or less, at the discretion of the Engineer.
		Slump ⁽¹⁾		(For compressive strength, one set of two cylinders per sample.)
		Temperature ⁽¹⁾		
		Air Content (when required ⁽¹⁾)	At Discharge ⁽⁶⁾	Sample for air content every 50 CY when elevation is above 3000 ft. For daily placements of 10 CY or less, at the discretion of the Engineer.

⁽¹⁾ Independent Assurance Sampling and Testing required.

⁽⁶⁾ If concrete is pumped to facilitate placement, at the discretion of the Engineer, samples may be taken from the truck and pump hose discharge to determine that the compressive strength specifications are met in the structure, and to correlate temperature, slump, and air content results. If the correlation is satisfactory and meets with the approval of the Engineer, sampling may continue from the most convenient location with occasional retesting for correlation. Rejection of concrete due to improper temperature or slump may occur at either the truck or pump hose discharge; however, rejection of concrete due to improper air content will only occur due to a failing test for a sample obtained at the final point of discharge..

TABLE 4 (continued) ACCEPTANCE SAMPLING GUIDE FOR PORTLAND CEMENT CONCRETE				
SPECIFICATION SECTION	MATERIAL	TYPE OF TEST(S) REQUIRED	SAMPLING POINT	MINIMUM SAMPLING FREQUENCY
1006	Portland Cement Concrete (PCC) Class S (with a compressive strength requirement equal to or greater than 4,000 psi)	Compressive Strength ⁽¹⁾	At Discharge ⁽⁶⁾	One sample for each 50 CY, or fraction thereof, of continuously placed concrete per day from each batch plant. For daily placements of 10 CY or less, at the discretion of the Engineer. (For compressive strength, one set of three cylinders per sample.)
		Slump ⁽¹⁾		
		Temperature ⁽¹⁾		
		Air Content (when required) ⁽¹⁾	At Discharge ⁽⁶⁾	Sample for air content every 50 CY when elevation is above 3000 ft. For daily placements of 10 CY or less, at the discretion of the Engineer.
<p>⁽¹⁾ Independent Assurance Sampling and Testing required.</p> <p>⁽⁶⁾ If concrete is pumped to facilitate placement, at the discretion of the Engineer, samples may be taken from the truck and pump hose discharge to determine that the compressive strength specifications are met in the structure, and to correlate temperature, slump, and air content results. If the correlation is satisfactory and meets with the approval of the Engineer, sampling may continue from the most convenient location with occasional retesting for correlation. Rejection of concrete due to improper temperature or slump may occur at either the truck or pump hose discharge; however, rejection of concrete due to improper air content will only occur due to a failing test for a sample obtained at the final point of discharge.</p>				

TABLE 4 (continued) ACCEPTANCE SAMPLING GUIDE FOR PORTLAND CEMENT CONCRETE				
SPECIFICATION SECTION	MATERIAL	TYPE OF TEST(S) REQUIRED	SAMPLING POINT	MINIMUM SAMPLING FREQUENCY
1006	Portland Cement Concrete (PCC) Class B	Compressive Strength ⁽¹⁾	At Discharge ⁽⁶⁾	One sample for each 100 CY of concrete placed from each batch plant For daily placements of 10 CY or less, at the discretion of the Engineer. (For compressive strength, one set of two cylinders per sample.)
		Slump ⁽¹⁾		
		Temperature ⁽¹⁾		
		Air Content (when required) ⁽¹⁾	At Discharge ⁽⁶⁾	Sample for air content every 50 CY when elevation is above 3000 ft. For daily placements of 10 CY or less, at the discretion of the Engineer.
<p>⁽¹⁾ Independent Assurance Sampling and Testing required.</p> <p>⁽⁶⁾ If concrete is pumped to facilitate placement, at the discretion of the Engineer, samples may be taken from the truck and pump hose discharge to determine that the compressive strength specifications are met in the structure, and to correlate temperature, slump, and air content results. If the correlation is satisfactory and meets with the approval of the Engineer, sampling may continue from the most convenient location with occasional retesting for correlation. Rejection of concrete due to improper temperature or slump may occur at either the truck or pump hose discharge; however, rejection of concrete due to improper air content will only occur due to a failing test for a sample obtained at the final point of discharge.</p>				

TABLE 4 (continued) ACCEPTANCE SAMPLING GUIDE FOR PORTLAND CEMENT CONCRETE				
SPECIFICATION SECTION	MATERIAL	TYPE OF TEST(S) REQUIRED	SAMPLING POINT	MINIMUM SAMPLING FREQUENCY
601 1006	Portland Cement Structural Concrete for Minor Precast Structures (Manholes, Cattle Guards, Utility Vaults, Catch Basins, Flared Ends, etc.)	Rebound Hammer	At Fabrication Yard	One set of readings per precast unit.
601 1006	Prestressed Concrete	Compressive Strength ----- Slump ----- Temperature	At Discharge ⁽⁶⁾	One sample per member or for each day's production. (For compressive strength, a minimum of two sets of 3 cylinders for detensioning, and one set of 3 cylinders for 28-day breaks.)
912	Shotcrete	Compressive Strength ----- Slump	Test Panels ----- At Mixer Discharge	Three cores from a test panel every 200 SY. ----- One per 100 CY.
922 1006	Utility Concrete	None		
<p>⁽⁶⁾ If concrete is pumped to facilitate placement, at the discretion of the Engineer, samples may be taken from the truck and pump hose discharge to determine that the compressive strength specifications are met in the structure, and to correlate temperature, slump, and air content results. If the correlation is satisfactory and meets with the approval of the Engineer, sampling may continue from the most convenient location with occasional retesting for correlation. Rejection of concrete due to improper temperature or slump may occur at either the truck or pump hose discharge; however, rejection of concrete due to improper air content will only occur due to a failing test for a sample obtained at the final point of discharge.</p>				

TABLE 5 ACCEPTANCE SAMPLING GUIDE FOR MATERIALS USED WITH PORTLAND CEMENT CONCRETE				
SPECIFICATION SECTION	MATERIAL	TYPE OF TEST(S) REQUIRED	SAMPLING POINT	MINIMUM SAMPLING FREQUENCY
602 1003	Prestressing Steel (Spiral, Bars, Strand Wire, or Wire)	Tensile Strength	Project or Fabrication Plant	Certificate of Compliance required and one 6 ft. piece from each bar size, heat, reel, or coil.
602 1003	Post-Tensioning Steel	Tensile Strength	Project	Certificate of Compliance required and one 6 ft. piece from each bar size, heat, reel, or coil.
605 1003	Reinforcement Bars (Epoxy Coated or Uncoated)	Yield Strength, Tensile Strength, Bend Test, Elongation, Weight/Foot, and Coating Thickness (if applicable)		
	Phoenix and Tucson Sources		Fabrication Plant or Supplier's Yard	Certificate of Compliance required and samples as per PPD ⁽³⁾ .
			Project	Certificate of Compliance required and one 7 ft. bar per shipment. See PPD ⁽³⁾ .
	Other sources		Project	Certificate of Compliance required and samples as per PPD ⁽³⁾ .
1003	Welded Wire Fabric (Smooth)	Tensile Strength, Diameter, Spelter, Weld Shear, Reduction in Area	Supplier's Yard or Project	Certificate of Compliance required and one 2 ft. x 2 ft. sample per 25 rolls.
(3) ADOT Materials Policy and Procedure Directive.				

TABLE 5 (continued) ACCEPTANCE SAMPLING GUIDE FOR MATERIALS USED WITH PORTLAND CEMENT CONCRETE				
SPECIFICATION SECTION	MATERIAL	TYPE OF TEST(S) REQUIRED	SAMPLING POINT	MINIMUM SAMPLING FREQUENCY
1003	Welded Wire Fabric (Deformed)	Tensile Strength, Weld Shear, Weight/Foot	Supplier's Yard or Project	Certificate of Compliance required and one 4 ft. x 4 ft. sample per 25 sheets.
1006	Admixtures			Certificate of Compliance required and must be on the Department's Approved Products List. See PPD ⁽³⁾ .
1006	Curing Compound	Water Loss	Supplier's Yard or Project	For material from preapproved lot, Certificate of Compliance only. See PPD ⁽³⁾ .
		% Solids		For material <u>not</u> preapproved, Certificate of Compliance and a 1/2 gallon sample per lot. See PPD ⁽³⁾ .
1006	Fly Ash and Natural Pozzolan	Chemical and Physical		Material supplied from an Approved Material Source. See PPD ⁽³⁾ .
1006	Silica Fume			Certificate of Compliance required with each delivery. See PPD ⁽³⁾ .
(3) ADOT Materials Policy and Procedure Directive.				

TABLE 5 (continued) ACCEPTANCE SAMPLING GUIDE FOR MATERIALS USED WITH PORTLAND CEMENT CONCRETE				
SPECIFICATION SECTION	MATERIAL	TYPE OF TEST(S) REQUIRED	SAMPLING POINT	MINIMUM SAMPLING FREQUENCY
1006	Water	Soluble Salts	Source	One sample (1 pint in glass container) per source ⁽⁷⁾ .
		pH		
1006	Hydraulic Cement (All Types)	Chemical and Physical		Material supplied from an Approved Material Source. See PPD ⁽³⁾ .
1011	Joint Materials	Per Specifications		Silicone joint sealant must be on the Department's Approved Product List. In addition, a Certificate of Analysis shall accompany each lot or batch of sealant.
				For joint materials other than silicone joint sealant, only a Certificate of Compliance is required.
<p>⁽³⁾ ADOT Materials Policy and Procedure Directive.</p> <p>⁽⁷⁾ No sample is necessary if water is potable and comes from a proven source.</p>				

TABLE 5 (continued) ACCEPTANCE SAMPLING GUIDE FOR MATERIALS USED WITH PORTLAND CEMENT CONCRETE				
SPECIFICATION SECTION	MATERIAL	TYPE OF TEST(S) REQUIRED	SAMPLING POINT	MINIMUM SAMPLING FREQUENCY
1013 604	Bearing Pads (Preformed Fabric)	Thickness ----- Compression Load	Project	Certificate of Analysis required and two sample pads from every 100, or fraction thereof, with a minimum of one sample pad from each lot for each type of pad. (Tested by ADOT.)
1013 604	Bearing Pads (Plain and Fabric Reinforced Elastomeric)	Per Specification Subsection 1013-2	Project	Certificate of Analysis required and two sample pads from every 100, or fraction thereof, with a minimum of one sample pad from each lot for each type of pad. [Tested by Engineer approved testing laboratory. See PPD ⁽³⁾ .]
1013 604	Bearing Pads (Steel Reinforced Elastomeric)	Per Specification Subsection 1013-2	Project	Certificate of Analysis required and two sample pads from every 100, or fraction thereof, with a minimum of one sample pad from each lot for each type of pad. [Tested by Engineer approved testing laboratory. See PPD ⁽³⁾ .]
(3) ADOT Materials Policy and Procedure Directive.				

TABLE 6 ACCEPTANCE SAMPLING GUIDE FOR STABILIZED SOILS AND BASES				
SPECIFICATION SECTION	MATERIAL	TYPE OF TEST(S) REQUIRED	SAMPLING POINT	MINIMUM SAMPLING FREQUENCY
301	Lime Treated Subgrade	Proctor Density ⁽¹⁾	Roadway	One per soil type, and as needed.
		Optimum Moisture ⁽¹⁾		
		Compaction ⁽¹⁾	Roadway	One per lift per 1000 ft.
302	Cement Treated Subgrade	Proctor Density ⁽¹⁾	Roadway	One per soil type, and as needed.
		Optimum Moisture ⁽¹⁾		
		Compaction ⁽¹⁾	Roadway	One per lift per 1000 ft.
304	Cement Treated Base	Proctor Density ⁽¹⁾	Roadway	At start of production then one per week, and as needed.
		Optimum Moisture ⁽¹⁾		
		Compaction ⁽¹⁾	Roadway or Point of Placement	One per lift per 1000 ft.
		Compressive Strength ⁽¹⁾		Three random samples per shift. (Three specimens from each sample.)
(1) Independent Assurance Sampling and Testing required.				

TABLE 6 (continued) ACCEPTANCE SAMPLING GUIDE FOR STABILIZED SOILS AND BASES				
SPECIFICATION SECTION	MATERIAL	TYPE OF TEST(S) REQUIRED	SAMPLING POINT	MINIMUM SAMPLING FREQUENCY
305	Lean Concrete Base	Compressive Strength ⁽¹⁾	At Discharge	Four random samples per 4000 SY, minimum four samples per shift.
		----- Slump ⁽¹⁾		
		----- Entrained Air (when required) ⁽¹⁾		
		----- Thickness	Roadway	Per Specifications.
Refer to Special Provisions	Bituminous Treated Base	See Special Provisions	Roadway	At the discretion of the Engineer.
Refer to Special Provisions	Cement Stabilized Alluvium	Compressive Strength ⁽¹⁾	Roadway or Point of Placement	One set of three per 1500 CY, minimum one set of three per 1/2 shift.
Refer to Special Provisions	Soil-Cement Bank Protection	Compressive Strength ⁽¹⁾	Roadway or Point of Placement	One set of three per 1500 CY, minimum one set of three per 1/2 shift.
(1) Independent Assurance Sampling and Testing required.				

TABLE 7 ACCEPTANCE SAMPLING GUIDE FOR BITUMINOUS MIXTURES				
SPECIFICATION SECTION	MATERIAL	TYPE OF TEST(S) REQUIRED	SAMPLING POINT	MINIMUM SAMPLING FREQUENCY
406	Asphaltic Concrete	% Asphalt ⁽¹⁾	Roadway	4 per lot.
		Moisture Content ⁽¹⁾		
		Gradation ⁽¹⁾		
		Marshall ⁽¹⁾ [Density, Stability, and Flow]		
		Rice ⁽¹⁾	Roadway	20 cores per lot (10 locations/2 cores per location).
407	Asphaltic Concrete Friction Course (ACFC)	% Asphalt ⁽¹⁾	Trucks at Mixing Plant	1 per 1/2 shift.
		Moisture Content ⁽¹⁾		
(1) Independent Assurance Sampling and Testing required.				

TABLE 7 (continued) ACCEPTANCE SAMPLING GUIDE FOR BITUMINOUS MIXTURES				
SPECIFICATION SECTION	MATERIAL	TYPE OF TEST(S) REQUIRED	SAMPLING POINT	MINIMUM SAMPLING FREQUENCY
409	Asphaltic Concrete (Miscellaneous Structural) [For Special Mix, see below]	% Asphalt	Roadway	At the discretion of the Engineer.
		Moisture Content		
		Rice		
		Marshall Density		
409	Asphaltic Concrete (Miscellaneous Structural - Special Mix)	% Asphalt ⁽¹⁾	Roadway	One sample per 500 tons.
		Moisture Content ⁽¹⁾		
		Rice ⁽¹⁾		
		Marshall Density ⁽¹⁾		
		Gradation ⁽¹⁾		
411	Asphaltic Concrete Friction Course (ACFC) - Miscellaneous	% Asphalt	Trucks at Mixing Plant	At the discretion of the Engineer.
		Moisture Content		
413	Asphaltic Concrete (Asphalt – Rubber) [AR-AC]	% Asphalt-Rubber ⁽¹⁾	Trucks at Mixing Plant, Windrow, or behind laydown machine	4 per shift.
		Moisture Content ⁽¹⁾		
(1) Independent Assurance Sampling and Testing required.				

TABLE 7 (continued) ACCEPTANCE SAMPLING GUIDE FOR BITUMINOUS MIXTURES				
SPECIFICATION SECTION	MATERIAL	TYPE OF TEST(S) REQUIRED	SAMPLING POINT	MINIMUM SAMPLING FREQUENCY
414	Asphaltic Concrete Friction Course (Asphalt – Rubber) [AR-ACFC]	% Asphalt-Rubber ⁽¹⁾	Trucks at Mixing Plant	4 per shift.
		Moisture Content ⁽¹⁾		
415	Asphaltic Concrete (Asphalt-Rubber) - End Product [AR-AC]	% Asphalt-Rubber ⁽¹⁾	Roadway	4 per lot.
		Moisture Content ⁽¹⁾		
		Gradation ⁽¹⁾		
		Marshall Density ⁽¹⁾		
		Rice ⁽¹⁾		
		Compaction	Roadway	20 cores per lot (10 locations/2 cores per location).
⁽¹⁾ Independent Assurance Sampling and Testing required.				

TABLE 7 (continued) ACCEPTANCE SAMPLING GUIDE FOR BITUMINOUS MIXTURES				
SPECIFICATION SECTION	MATERIAL	TYPE OF TEST(S) REQUIRED	SAMPLING POINT	MINIMUM SAMPLING FREQUENCY
416	Asphaltic Concrete - End Product [For mixes containing reclaimed asphalt pavement (RAP), see PPD ⁽³⁾ .]	% Asphalt ⁽¹⁾	Roadway	4 per lot.
		Moisture Content ⁽¹⁾		
Gradation ⁽¹⁾				
Marshall ⁽¹⁾ [Density, Stability, and Flow]				
Rice ⁽¹⁾				
		Compaction, unless otherwise specified. (Courses > 1½ inch in nominal thickness)	Roadway	20 cores per lot (10 locations/2 cores per location).
<p>⁽¹⁾ Independent Assurance Sampling and Testing required.</p> <p>⁽³⁾ ADOT Materials Policy and Procedure Directive.</p>				

TABLE 7 (continued) ACCEPTANCE SAMPLING GUIDE FOR BITUMINOUS MIXTURES				
SPECIFICATION SECTION	MATERIAL	TYPE OF TEST(S) REQUIRED	SAMPLING POINT	MINIMUM SAMPLING FREQUENCY
417	Asphaltic Concrete (End Product) SHRP Volumetric Mix [For mixes containing reclaimed asphalt pavement (RAP), see PPD ⁽³⁾ .]	% Asphalt ⁽¹⁾	Roadway	4 per lot.
		Moisture Content ⁽¹⁾		
		Gradation ⁽¹⁾		
		Gyratory Density ⁽¹⁾		
		Rice ⁽¹⁾		
		Compaction (Courses > 1½ inch in nominal thickness)	Roadway	20 cores per lot (10 locations/2 cores per location).
Refer to Special Provisions	Asphaltic Concrete - Miscellaneous Paving			Tested at the discretion of the Engineer.
<p>⁽¹⁾ Independent Assurance Sampling and Testing required.</p> <p>⁽³⁾ ADOT Materials Policy and Procedure Directive.</p>				

TABLE 8 ACCEPTANCE SAMPLING GUIDE FOR MISCELLANEOUS MATERIALS				
SPECIFICATION SECTION	MATERIAL	TYPE OF TEST(S) REQUIRED	SAMPLING POINT	MINIMUM SAMPLING FREQUENCY
301 503 913 1010	Lime (for use in soil stabilization, mortar, and grout)	Chemical and Physical		See PPD ⁽³⁾ .
406 407 409 411 413 414 415 416 417	Hydrated Lime (for use as mineral admixture in asphaltic concrete mixes)			Material supplied from an Approved Material Source. See PPD ⁽³⁾ .
302 304 501 503 505 601 602 912 913 1010	Hydraulic Cement (for use in soil stabilization, mortar, and grout)			See PPD ⁽³⁾ .
406 407 409 411 413 414 415 416 417	Portland Cement and Blended Hydraulic Cement (for use as mineral admixture in asphaltic concrete mixes)	Chemical and Physical		Material supplied from an Approved Material Source. See PPD ⁽³⁾ .

⁽³⁾ ADOT Materials Policy and Procedure Directive.

TABLE 8 (continued) ACCEPTANCE SAMPLING GUIDE FOR MISCELLANEOUS MATERIALS				
SPECIFICATION SECTION	MATERIAL	TYPE OF TEST(S) REQUIRED	SAMPLING POINT	MINIMUM SAMPLING FREQUENCY
501	Corrugated Metal Pipe (CMP) [Coated or Non-coated]	Yearly check by Central Lab	Supplier's Yard	Certificate of Compliance required.
501 1006	Non-Reinforced, Cast-in-Place Concrete Pipe	Compressive Strength ----- Slump ----- Air Content (when required) ----- Temperature ----- Wall Thickness	At Discharge ⁽⁶⁾ Site	Per Specifications.
501 1010	Precast Reinforced or Non-Reinforced Concrete Pipe	Compression (D-Load) ----- Wall Thickness	Supplier's Yard	Certificate of Compliance required and one sample for each 100 sections per size per type.
Refer to Special Provisions	Vitrified Clay Pipe	Compression	Project	One sample for each 100 sections per size per type.
505	Brick for Manholes	Compression	Project	One sample (3 bricks) per project.
<p>⁽⁶⁾ If concrete is pumped to facilitate placement, at the discretion of the Engineer, samples may be taken from the truck and pump hose discharge to determine that the compressive strength specifications are met in the structure, and to correlate temperature, slump, and air content results. If the correlation is satisfactory and meets with the approval of the Engineer, sampling may continue from the most convenient location with occasional retesting for correlation. Rejection of concrete due to improper temperature or slump may occur at either the truck or pump hose discharge; however, rejection of concrete due to improper air content will only occur due to a failing test for a sample obtained at the final point of discharge.</p>				

TABLE 8 (continued)				
ACCEPTANCE SAMPLING GUIDE FOR MISCELLANEOUS MATERIALS				
SPECIFICATION SECTION	MATERIAL	TYPE OF TEST(S) REQUIRED	SAMPLING POINT	MINIMUM SAMPLING FREQUENCY
Refer to Special Provisions	Paving Brick	Compression	Project	One sample (3 paving bricks) per project.
		Absorption		
Refer to Special Provisions	Cinder Block	Compression	Project	One sample (3 cinder blocks) per project.
		Absorption		
Refer to Special Provisions	Slump Block	Compression	Project	One sample (3 slump blocks) per project.
		Absorption		
604 731 1004 1012	High Strength Bolts, Nuts, Washers, or Anchor Bolts	Rockwell Hardness	Project	Certificate of Analysis required and three samples per lot, or 0.1% of lots in excess of 3000, for each bolt diameter, including nuts and washers.
Wedge Tensile Strength				
608 1007	Retroreflective Sheeting	Per Specifications		Certificate of Compliance required and also must be on the Department's Approved Products List
608	Sign Panel Silk-Screened Characters			Certificate of Compliance required.

TABLE 8 (continued) ACCEPTANCE SAMPLING GUIDE FOR MISCELLANEOUS MATERIALS				
SPECIFICATION SECTION	MATERIAL	TYPE OF TEST(S) REQUIRED	SAMPLING POINT	MINIMUM SAMPLING FREQUENCY
704 708 709	Glass Beads	Roundness ----- Gradation ----- Refractive Index ----- Moisture Resistance ----- Heavy Metal Concentration (if required)	Supplier's Yard (Recommended) or Project	See PPD ⁽³⁾ . ----- For other than Dual Component Pavement Markings: ----- Certificate of Compliance required*, and if preapproved, a copy of the Central Lab test results. ----- If <u>not</u> preapproved by Central Lab, Certificate of Compliance required*, and a one gallon sample when material is supplied in a "super sack", or one full bag when material is supplied in a 50 pound bag. ----- *If required, a Certificate of Analysis must also be submitted (certifying that the Heavy Metal Concentration meets the specifications). ----- For Dual Component Pavement Markings: ----- Certificate of Analysis required**, and if preapproved, a copy of the Central Lab test results. ----- If <u>not</u> preapproved by Central Lab, Certificate of Analysis required**, and a one gallon sample when material is supplied in a "super sack", or one full bag when material is supplied in a 50 pound bag. ----- **The Certificate of Analysis shall also include a Material Safety Data Sheet (MSDS).

⁽³⁾ ADOT Materials Policy and Procedure Directive.

TABLE 8 (continued) ACCEPTANCE SAMPLING GUIDE FOR MISCELLANEOUS MATERIALS				
SPECIFICATION SECTION	MATERIAL	TYPE OF TEST(S) REQUIRED	SAMPLING POINT	MINIMUM SAMPLING FREQUENCY
705	Preformed Plastic Pavement Marking			<p>Certificate of Compliance required*, and also must be on the Department's Approved Products List.</p> <p>*A Certificate of Analysis is also required (certifying that the Heavy Metal Concentration of the glass beads meets the specifications).</p>
704	Thermoplastic Pavement Markings	Per Specifications	Project	<p>Certificate of Compliance required and also must be on the Department's Approved Products List.</p> <hr style="border-top: 1px dashed black;"/> <p>Random spot checks for thickness of thermoplastic material while being applied.</p>

TABLE 8 (continued)				
ACCEPTANCE SAMPLING GUIDE FOR MISCELLANEOUS MATERIALS				
SPECIFICATION SECTION	MATERIAL	TYPE OF TEST(S) REQUIRED	SAMPLING POINT	MINIMUM SAMPLING FREQUENCY
706	Raised Pavement Markers	Per Specifications	Project	Certificate of Compliance required for markers and adhesive.
				Adhesive must be on the Department's Approved Products List.
				For non-reflective pavement markers, one sample (one marker) per lot per type.
				For reflective pavement markers, one sample (three markers) per lot per type.
708	Permanent Pavement Markings (Painted)	Per Specifications	Supplier	A sample (one quart in a metal can) of the material from each batch must be submitted to Central Lab for testing prior to use.
			Project	Certificate of Compliance and a copy of the Central Materials Chemistry Lab test results are required.
				Check-samples of finished paint while being applied, at intervals determined by the Engineer.

TABLE 8 (continued)				
ACCEPTANCE SAMPLING GUIDE FOR MISCELLANEOUS MATERIALS				
SPECIFICATION SECTION	MATERIAL	TYPE OF TEST(S) REQUIRED	SAMPLING POINT	MINIMUM SAMPLING FREQUENCY
709	Dual Component Pavement Markings	Per Specifications	Project	Certificate of Analysis required and must be on the Department's Approved Projects List. ----- Random spot checks for thickness.
732	Polyvinyl Chloride (PVC) Pipe for Electrical Conduit	Resistance to Crushing	Project	One sample per 5000 ft.
808	Polyvinyl Chloride (PVC) Pipe for Water	Wall Thickness ----- Burst Pressure ----- Diameter	Project	One sample per 10,000 ft.
902	Chain Link Fabric			Certificate of Compliance required.
902	Fence Post and Rails			Certificate of Compliance required.
902 903	Miscellaneous Fence Hardware			Certificate of Compliance required.
902 903	Post Clips, Hog Rings, Tie Wire, or Tension Wire			Certificate of Compliance required.

TABLE 8 (continued) ACCEPTANCE SAMPLING GUIDE FOR MISCELLANEOUS MATERIALS				
SPECIFICATION SECTION	MATERIAL	TYPE OF TEST(S) REQUIRED	SAMPLING POINT	MINIMUM SAMPLING FREQUENCY
903	Barbed Wire or Barbless Wire	Tensile Strength ----- Spelter ----- Diameter	Supplier's Yard or Project	Certificate of Compliance ⁽⁸⁾ required and one 4 ft. sample per 50 rolls.
903	Fence Stays			Certificate of Compliance required.
903	T-Post	Weight/Foot ----- Length	Supplier's Yard or Project	Certificate of Compliance ⁽⁸⁾ required and one post per 500 posts, or fraction thereof, per lot.
903	Woven Wire Fabric	Spelter ----- Diameter ----- Tensile Strength	Supplier's Yard or Project	Certificate of Compliance ⁽⁸⁾ required and one sample [3 feet long, the full height (width) of the fabric] per 50 rolls.
904 913	Wire Rope			Certificate of Compliance required.
<p>⁽⁸⁾ Certifying that manufacturing processes and application of coating occurred in the United States. (This certification required for Federal-Aid projects only. See Special Provisions for exception based on quantity being used.)</p>				

TABLE 8 (continued)				
ACCEPTANCE SAMPLING GUIDE FOR MISCELLANEOUS MATERIALS				
SPECIFICATION SECTION	MATERIAL	TYPE OF TEST(S) REQUIRED	SAMPLING POINT	MINIMUM SAMPLING FREQUENCY
1002	Paint	Per Specifications	Project	Paint for use on structural steel and other metallic surfaces:
				Certificate of Compliance is required and the system must be on the Department's Approved Products List.
			Supplier or Contractor	Paint for use on concrete or masonry surfaces:
				A sample (one quart in a metal can) of the material from each batch must be submitted to Central Lab for testing prior to use.
			Project	Certificate of Compliance and a copy of the Central Materials Chemistry Lab test results are required. Also must be on the Department's Approved Products List.
			Project	Paint for use on other than structural steel and other metallic surfaces, concrete surfaces, or masonry surfaces:
Certificate of Compliance is required and one sample (one quart in a metal can) per batch submitted to Central Lab for testing.				


TABLE 8 (continued) ACCEPTANCE SAMPLING GUIDE FOR MISCELLANEOUS MATERIALS				
SPECIFICATION SECTION	MATERIAL	TYPE OF TEST(S) REQUIRED	SAMPLING POINT	MINIMUM SAMPLING FREQUENCY
1012	Guardrail Elements			Certificate of Compliance required.
1012	Guardrail Fasteners	Rockwell Hardness ----- Tensile Strength	Project	For other than High Strength Anchor Bolts, Certificate of Compliance required and three samples per lot, or 0.1% of lots in excess of 3000, for each bolt diameter, including nuts and washers. ----- For High Strength Anchor Bolts, see Page 53.
1012	Guardrail Posts and Blocks	None		Certificate of Compliance required. ----- For timber guardrail posts and blocks, see PPD ⁽³⁾ .
(3) ADOT Materials Policy and Procedure Directive.				

TABLE 8 (continued)				
ACCEPTANCE SAMPLING GUIDE FOR MISCELLANEOUS MATERIALS				
SPECIFICATION SECTION	MATERIAL	TYPE OF TEST(S) REQUIRED	SAMPLING POINT	MINIMUM SAMPLING FREQUENCY
1014	Geosynthetics		Supplier and Project	If material has been preapproved, Certificate of Compliance required and one sample for every 10 rolls per lot. (Minimum of one sample per lot.) Samples shall not be taken within 5 feet from either end of the roll, and shall be at least 6 feet long by the full width of the roll.
			Project	If material has <u>not</u> been preapproved, Certificate of Analysis required and one sample for every 10 rolls per lot. (Minimum of one sample per lot.) Samples shall not be taken within 5 feet from either end of the roll, and shall be at least 6 feet long by the full width of the roll.
NOTE: Information on Geosynthetics continued on next page.				

TABLE 8 (continued)				
ACCEPTANCE SAMPLING GUIDE FOR MISCELLANEOUS MATERIALS				
SPECIFICATION SECTION	MATERIAL	TYPE OF TEST(S) REQUIRED	SAMPLING POINT	MINIMUM SAMPLING FREQUENCY
NOTE: Information on Geosynthetics continued from previous page.				
1014 412	Pavement Fabric	Per Specification Subsection 1014-2		
1014 306	Geogrid	Per Specification Subsection 1014-3		
1014 208	Separation Geotextile Fabric	Per Specification Subsection 1014-4		
1014 913	Bank Protection Fabric	Per Specification Subsection 1014-5		
1014 203	Geocomposite Wall Drain System	Per Specification Subsection 1014-6		
1014 307	Geocomposite Edge Drain System	Per Specification Subsection 1014-7		
208	Geomembrane	See Special Provisions.		

TABLE 9
 ILLUSTRATION OF SAMPLING TICKET AND LISTING OF CODES FOR
 PURPOSE, TESTING LAB, SIZE, AND ROADWAY

Sample Ticket

PLEASE PRESS FIRMLY WHILE FILLING OUT FORM	 USE CAPITAL LETTERS	44-9346 RS/05									
	ARIZONA DEPARTMENT OF TRANSPORTATION SAMPLE TABULATION SOIL, AGGREGATE, & BITUMINOUS MIXES	LAB NUMBER <input type="text"/>	ORG NUMBER <input type="text"/>	MATL <input type="text"/>	TYPE <input type="text"/>	PUR- POSE <input type="text"/>	TEST LAB <input type="text"/>	SIZE <input type="text"/>	SIZE % <input type="text"/>		
	TEST NO. <input type="text"/>	LOT OR SUFFIX <input type="text"/>	SAMPLED BY <input type="text"/>	MO <input type="text"/>	DAY <input type="text"/>	YEAR <input type="text"/>	TIME <input type="text"/>		MILITARY TIME <input type="text"/>		
	SAMPLED FROM <input type="text"/>			LIFT NO. <input type="text"/>	RDWY <input type="text"/>	STATION <input type="text"/>					
	ORIGINAL SOURCE <input type="text"/>			PROJECT ENGINEER / SUPERVISOR <input type="text"/>		PROJECT NUMBER <input type="text"/>		TRACS NUMBER <input type="text"/>			
	REMARKS <input type="text"/>										
	<input type="text"/>										
	<input type="text"/>										
	<input type="text"/>										
	<input type="text"/>										

Purpose Codes

- A Acceptance
- M Miscellaneous
- C Control
- P Independent Assurance
- I Informational

Testing Lab Codes

- C Central Lab
- R Regional Lab
- P Project Lab

Size Codes

- Stockpiles:
- B Blend
 - F Fine
 - I Intermediate
 - C Coarse
 - K Coarsest
- Bins:
- 9 Composite of Bins
 - 1 Bin #1
 - 2 Bin #2, etc.

Roadway Codes

- NB Northbound
- SB Southbound, etc.
- RA Ramp A
- RB Ramp B, etc.
- FR Frontage Road
- XR Crossroad

TABLE 10
 LISTING OF MATERIAL CODES AND TYPE CODES
 USED BY FAST [Field Office Automation System]⁽⁹⁾

Material Description	Material Code	Type Description	Type Code
Admix	AD		
Aggregate	AG	Bituminous Treated Base	BB
Aggregate	AG	Cement Treated Base	CB
Aggregate	AG	Cement Treated Subgrade	CS
Aggregate	AG	Lean Concrete Base	LC
Aggregate	AG	Lime Treated Subgrade	LS
Aggregate	AG	Road Mix	RM
Aggregate	AG	Soil Cement	SC
Aggregate Base	AB	Class 1	1
Aggregate Base	AB	Class 2	2
Aggregate Base	AB	Class 3	3
Aggregate Subbase	AS	Class 4	4
Aggregate Subbase	AS	Class 5	5
Aggregate Subbase	AS	Class 6	6
Arrestor Bed Aggregate	AA		
Asphaltic Concrete	AC	1/2" Asphaltic Concrete	12
Asphaltic Concrete	AC	1/2" Fine Band 417 AC	12F
Asphaltic Concrete	AC	1/2" Coarse Band 417 AC	12K
Asphaltic Concrete	AC	3/4" Asphaltic Concrete	34
Asphaltic Concrete	AC	3/4" Fine Band 417 AC	34F
Asphaltic Concrete	AC	3/4" Coarse Band 417 AC	34K
Asphaltic Concrete	AC	Asphaltic Concrete Friction Course (ACFC)	FC
Asphaltic Concrete	AC	Asphalt-Rubber Asphaltic Concrete (AR-AC)	RD
Asphaltic Concrete	AC	Asphalt-Rubber Asphaltic Concrete Friction Course (AR-ACFC)	RF
Asphaltic Concrete	AC	Base Mix	BM
Asphaltic Concrete	AC	Bituminous Treated Base	BB
Asphaltic Concrete	AC	AZ409 Miscellaneous Structural	409MI
Asphaltic Concrete	AC	AZ409 Miscellaneous Structural (Special Mix)	409SP

⁽⁹⁾ FAST may revise codes, delete codes, or add codes at various times. Users must assure that they are utilizing the current FAST codes.

TABLE 10 (continued) LISTING OF MATERIAL CODES AND TYPE CODES USED BY FAST [Field Office Automation System] ⁽⁹⁾			
Material Description	Material Code	Type Description	Type Code
Asphaltic Concrete	AC	Other	OT
Asphaltic Concrete	AC	Recycled Asphaltic Concrete	RC
Asphaltic Concrete	AC	Road Mix	RM
Asphaltic Concrete Friction Course (ACFC)	FC		
Asphalt-Rubber Asphaltic Concrete (AR-AC)	RD		
Asphalt-Rubber Asphaltic Concrete Friction Course (AR-ACFC)	RF		
Backfill	BF	Aluminum Pipe	AP
Backfill	BF	Concrete Pipe	CP
Backfill	BF	Metal Pipe	MP
Backfill	BF	Plastic Pipe	PP
Backfill	BF	Slurry	SL
Backfill	BF	Special	SP
Backfill	BF	Trench	TR
Bedding Material	BM	Concrete Pipe	CP
Bedding Material	BM	Corrugated Metal Pipe	MP
Bedding Material	BM	PVC Pipe	PV
Bedding Material	BM	Slurry	SL
Blotter Material	BL		
Borrow	BW		
Cement Stabilized Alluvium	CS		
Coarse Aggregate	CA	Size 1	1
Coarse Aggregate	CA	Size 2	2
Coarse Aggregate	CA	Size 3	3
Coarse Aggregate	CA	Size 4	4
Coarse Aggregate	CA	Size 5	5
Coarse Aggregate	CA	Size 6	6
Coarse Aggregate	CA	Size 7	7
Coarse Aggregate	CA	Size 8	8
Coarse Aggregate	CA	Size 9	9
⁽⁹⁾ FAST may revise codes, delete codes, or add codes at various times. Users must assure that they are utilizing the current FAST codes.			

TABLE 10 (continued) LISTING OF MATERIAL CODES AND TYPE CODES USED BY FAST [Field Office Automation System] ⁽⁹⁾			
Material Description	Material Code	Type Description	Type Code
Coarse Aggregate	CA	Size 10	10
Coarse Aggregate	CA	Size 24	24
Coarse Aggregate	CA	Size 56	56
Coarse Aggregate	CA	Size 57	57
Coarse Aggregate	CA	Size 67	67
Coarse Aggregate	CA	Size 68	68
Coarse Aggregate	CA	Size 78	78
Coarse Aggregate	CA	Size 89	89
Coarse Aggregate	CA	Size 357	357
Coarse Aggregate	CA	Size 467	467
Coarse Aggregate	CA	Composite Samples	NA
Cover Material	CM		
Crash Barrel Sand	CB		
Decomposed Granite	DG		
Embankment	EM		
Entrained Air	ET		
Filter Material	FM		
Fine Aggregate	FA		
Fly Ash	FF		
Granite Mulch	GM		
Granulated Rubber	GR		
Grout	GT		
Maintenance	MT		
Membrane Seal	MS		
Mineral Aggregate	MA		
Mineral Aggregate	MA	1/2" Asphaltic Concrete	12
Mineral Aggregate	MA	1/2" Fine Band 417 AC	12F
Mineral Aggregate	MA	1/2" Coarse Band 417 AC	12K
Mineral Aggregate	MA	3/4" Asphaltic Concrete	34
Mineral Aggregate	MA	3/4" Fine Band 417 AC	34F
Mineral Aggregate	MA	3/4" Coarse Band 417 AC	34K
Mineral Aggregate	MA	AZ409 Miscellaneous Structural	409MI
Mineral Aggregate	MA	AZ409 Miscellaneous Structural (Special Mix)	409SP
⁽⁹⁾ FAST may revise codes, delete codes, or add codes at various times. Users must assure that they are utilizing the current FAST codes.			

TABLE 10 (continued) LISTING OF MATERIAL CODES AND TYPE CODES USED BY FAST [Field Office Automation System] ⁽⁹⁾			
Material Description	Material Code	Type Description	Type Code
Mineral Aggregate	MA	Asphaltic Concrete Friction Course (ACFC)	FC
Mineral Aggregate	MA	Asphalt-Rubber Asphaltic Concrete (AR-AC)	RD
Mineral Aggregate	MA	Asphalt-Rubber Asphaltic Concrete Friction Course (AR-ACFC)	RF
Mineral Aggregate	MA	Base Mix	BM
Mineral Aggregate	MA	Other	OT
Mineral Aggregate	MA	Recycled Asphaltic Concrete	RC
Natural Ground	NG		
Other	OT		
Pipe Plating	PM		
Pneumatically Placed Mortar	NM		
Reclaimed Asphalt Pavement	RP	Coarse	C
Reclaimed Asphalt Pavement	RP	Fine	F
Reclaimed Asphalt Pavement	RP	Other	O
Rip Rap	RR		
Rock Mulch	RM		
Slurry	SL	3/8" Aggregate	38
Slurry	SL	#4 Aggregate	4
Structure Backfill	SB		
Subgrade	SG		
Subgrade Seal	SS		
Top Soil	TS		
Water	HO		
Winter Cinders	WC		

⁽⁹⁾ FAST may revise codes, delete codes, or add codes at various times. Users must assure that they are utilizing the current FAST codes.

TABLE 11 INDEX OF MATERIALS LISTED IN TABLES 1 THROUGH 8	
MATERIAL	PAGE
Admixtures for Portland Cement Concrete	41
Aggregate for Arrestor Bed	27
Aggregate for Cement Stabilized Alluvium	27
Aggregate for Cement Treated Base	9
Aggregate for Lean Concrete Base	9
Aggregate for Soil-Cement Bank Protection	27
Aggregate Base	5-6
Aggregate Subbase	7-8
Asphalt Cement (PG XX-XX)	31
Asphalt Cement (PG XX-XX) for Asphalt-Rubber	33
Asphaltic Concrete	46
Asphaltic Concrete (Asphalt-Rubber) [AR-AC]	47
Asphaltic Concrete (Asphalt-Rubber) - End Product [AR-AC]	48
Asphaltic Concrete - End Product	49
Asphaltic Concrete (End Product) SHRP Volumetric Mix	50
Asphaltic Concrete Friction Course (ACFC)	46
Asphaltic Concrete Friction Course (Asphalt-Rubber) [AR-ACFC]	48
Asphaltic Concrete Friction Course (ACFC) - Miscellaneous	47
Asphaltic Concrete - Miscellaneous Paving	50
Asphaltic Concrete (Miscellaneous Structural)	47
Asphaltic Concrete (Miscellaneous Structural - Special Mix)	47
Asphalt-Rubber (CRA)	33-34
Bank Protection Fabric	62
Barbed Wire	58
Barbless Wire	58
Bearing Pads	43
Bedding Material for Pipe	22
Bedding Material for Polyvinyl Chloride (PVC) Irrigation Pipe	23
Bituminous Treated Base	45
Blotter Material	10
Borrow	1
Brick for Manholes	52
Cement Stabilized Alluvium	45
Cement Treated Base	44
Cement Treated Subgrade	44
Chain Link Fabric	57
Cinder Block	53

TABLE 11 (continued) INDEX OF MATERIALS LISTED IN TABLES 1 THROUGH 8	
MATERIAL	PAGE
Coarse Aggregate for Portland Cement Concrete (PCC)	26
Cover Material	10
Crash Barrel Sand	23
Crumb Rubber for Asphalt-Rubber	33
Curing Compound	41
Decomposed Granite	3
Dual Component Pavement Markings	57
Embankment	1
Emulsified Asphalt	29
Emulsified Asphalt Special Type	30
Emulsified Asphalt for Cold Recycled Asphaltic Concrete	35
Emulsified Recycling Agent (ERA)	32
Fence Hardware, Miscellaneous	57
Fence Post and Rails	57
Fence Stays	58
Filter Material for Perforated Pipe	22
Fine Aggregate for Portland Cement Concrete (PCC)	25
Fly Ash and Natural Pozzolan	41
Geocomposite Edge Drain System	62
Geocomposite Wall Drain System	62
Geogrid	62
Geomembrane	62
Geosynthetics	61-62
Glass Beads	54
Granite Mulch	3
Guardrail Elements	60
Guardrail Fasteners	60
Guardrail Posts and Blocks	60
High Strength Bolts, Nuts, Washers, or Anchor Bolts	53
Hydrated Lime (for use as mineral admixture in asphaltic concrete mixes)	51
Hydraulic Cement	42
Hydraulic Cement (for use in soil stabilization, mortar, and grout)	51
Joint Materials	42
Lean Concrete Base	45
Lime (for use in soil stabilization, mortar, and grout)	51
Lime Treated Subgrade	44
Liquid Asphalt [Cutback Asphalt - (Medium Curing Type)]	28

TABLE 11 (continued) INDEX OF MATERIALS LISTED IN TABLES 1 THROUGH 8	
MATERIAL	PAGE
Mineral Aggregate for Asphaltic Concrete	12
Mineral Aggregate for Asphaltic Concrete (Asphalt-Rubber) [AR-AC]	15
Mineral Aggregate for Asphaltic Concrete (Asphalt-Rubber) – End Product [AR-AC]	17
Mineral Aggregate for Asphaltic Concrete - End Product [without reclaimed asphaltic pavement (RAP)]	18
Mineral Aggregate for Asphaltic Concrete - End Product [with reclaimed asphaltic pavement (RAP)]	19
Mineral Aggregate for Asphaltic Concrete (End Product) SHRP Volumetric Mix [without reclaimed asphalt pavement (RAP)]	20
Mineral Aggregate for Asphaltic Concrete (End Product) SHRP Volumetric Mix [without reclaimed asphalt pavement (RAP)]	21
Mineral Aggregate for Asphaltic Concrete Friction Course (ACFC)	13
Mineral Aggregate for Asphaltic Concrete Friction Course (Asphalt-Rubber) [AR-ACFC]	16
Mineral Aggregate for Asphaltic Concrete Friction Course (ACFC) - Miscellaneous	15
Mineral Aggregate for Asphaltic Concrete - Miscellaneous Paving	22
Mineral Aggregate for Asphaltic Concrete (Miscellaneous Structural)	14
Mineral Aggregate for Asphaltic Concrete (Miscellaneous Structural – Special Mix)	14
Mineral Aggregate for Micro-Surfacing	11
Natural Ground	1
Paint	59
Pavement Fabric	62
Paving Brick	53
Permanent Pavement Markings (Painted)	56
Pipe Backfill	4
Pipe, Corrugated Metal (CMP) [Coated or Non-coated]	52
Pipe, Non-Reinforced Cast-in-Place Concrete	52
Pipe, Polyvinyl Chloride (PVC) for Electrical Conduit	57
Pipe, Polyvinyl Chloride (PVC) for Water	57
Pipe, Precast Reinforced or Non-Reinforced Concrete	52
Pipe, Vitrified Clay	52
Plating Material for Pipe Ends	23
Portland Cement and Blended Hydraulic Cement (for use as mineral admixture in asphaltic concrete mixes)	51
Portland Cement Concrete (PCC) (Class P)	36

TABLE 11 (continued) INDEX OF MATERIALS LISTED IN TABLES 1 THROUGH 8	
MATERIAL	PAGE
Portland Cement Concrete (PCC) (Class S) (with a compressive strength requirement less than 4,000 psi)	36
Portland Cement Concrete (PCC) (Class S) (with a compressive strength requirement equal to or greater than 4,000 psi)	37
Portland Cement Concrete (PCC) (Class B)	38
Portland Cement Structural Concrete for Minor Precast Structures	39
Post Clips and Hog Rings	57
Post-Tensioning Steel	40
Preformed Plastic Pavement Marking	55
Prestressed Concrete	39
Prestressing Steel	40
Raised Pavement Markers	56
Recycling Agent	28
Reinforcement Bars	40
Retroreflective Sheeting	53
Rock	24
Shotcrete	39
Sign Panel Silk-Screened Characters	53
Silica Fume	41
Slump Block	53
Soil for Shoulder Build-up	2
Soil-Cement Bank Protection	45
Separation Geotextile Fabric	62
Structure Backfill	4
Subgrade	2
T-Post	58
Thermoplastic Pavement Markings	55
Tie Wire and Tension Wire	57
Top Soil	3
Trench Backfill	2
Utility Concrete	39
Water	42
Welded Wire Fabric (Smooth)	40
Welded Wire Fabric (Deformed)	41
Wire Rope	58
Woven Wire Fabric	58