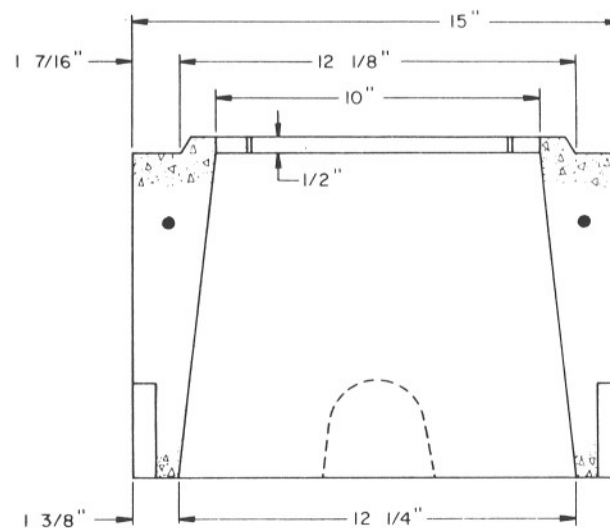


SECTION A-A

NOTES:

1. See the Specifications for material and construction.
2. Top locking bead may be continuous, located at sides only, or located at corners only.
3. See T.S. I-6 for typical installation details.
4. Steel reinforcing shall be as regularly used in standard products of the respective manufacturer.



SECTION B-B

DESIGN APPROVED <i>Garbu Brown</i> 7/24/60	STATE OF ARIZONA DEPARTMENT OF TRANSPORTATION DIVISION OF HIGHWAYS STANDARD DRAWINGS	REV
APPROVED FOR DISTRIBUTION	NO. 5 PULL BOX EXTENSION	DRAWING NO. T.S. 1-3